

AVAILABLE FOR LEASE
6370 N. FIGARDEN DRIVE | SUITE 104

VILLAGE WALK SHOPPING CENTER

FRESNO, CA



Shane Sousa
Sales Associate
t. 559-447-6221
shane@retailcalifornia.com
CA RE Lic. #02152527

Nick Frechou
Senior Vice President
t. 559-447-6266
nick@retailcalifornia.com
CA RE Lic. #01887999

Independently Owned and Operated | Corporate License #00020875 | retailcalifornia.com

FRESNO OFFICE: 7480 N. Palm Ave. #101, Fresno, CA 93711, t. 559-432-6200

The distributor of this communication is performing acts for which a real estate license is required. The information contained herein has been obtained from sources deemed reliable but has not been verified and no guarantee, warranty or representation, either express or implied, is made with respect to such information. Terms of sale or lease and availability are subject to change or withdrawal without notice.

VILLAGE WALK SHOPPING CENTER

FRESNO, CA

PROPERTY

INFORMATION

LOCATION DESCRIPTION

VillageWalk is located at the NEC of Bullard & Figarden in Fresno, CA also known as Fig Garden Loop.

PROPERTY HIGHLIGHTS

This area of Northwest Fresno offers strong demographics in a newer established neighborhood. The subject property offers abundant parking and a great anchor tenant in Crunch Fitness. Population within a 3-mile radius is 106,059±. Figarden Drive experiences 39,441± cars per day.

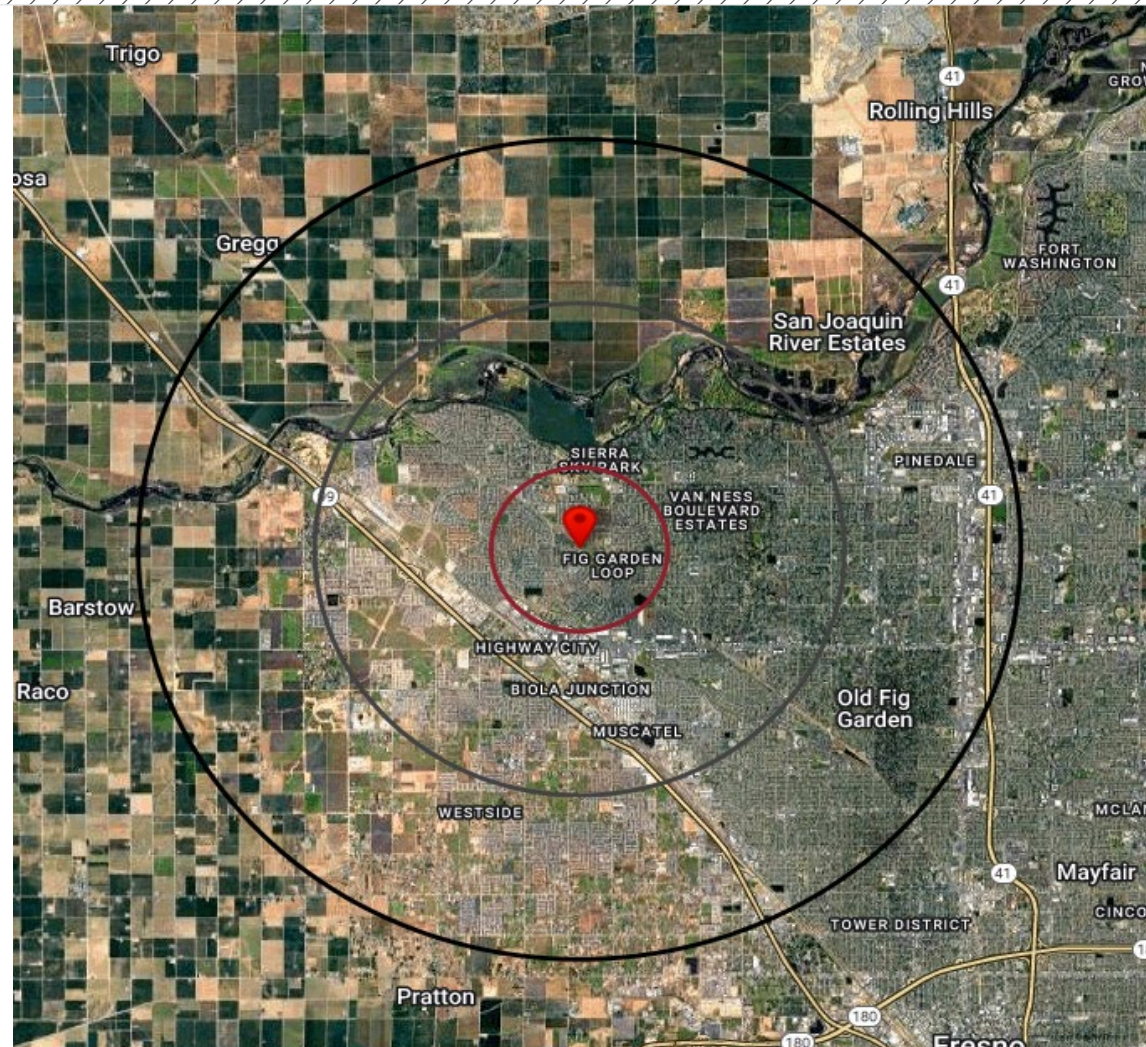
AVAILABILITY

Suite 104: 3,100± SF

Lease Rate: Please contact agent for more information

	DEMOGRAPHICS	1 MILE RADIUS	3 MILE RADIUS	5 MILE RADIUS
POPULATION	2030 Projection	21,786	107,764	213,745
	2025 Estimate	21,581	106,059	212,235
	Growth 2025-2030	0.95%	1.61%	0.71%
	Growth 2020-2025	3.57%	4.58%	1.80%
	Growth 2010-2020	4.35%	9.15%	8.30%
HOUSEHOLD	2030 Projection	8,125	37,201	73,485
	2025 Estimate	7,997	36,588	72,912
	Growth 2025-2030	1.61%	1.68%	0.79%
	Growth 2020-2025	3.97%	4.00%	1.79%
	Growth 2010-2020	5.96%	7.88%	6.38%
	2025 Est. Average HH Income	\$95,416	\$115,689	\$102,492

Source: Claritas 2025



TRAFFIC COUNTS

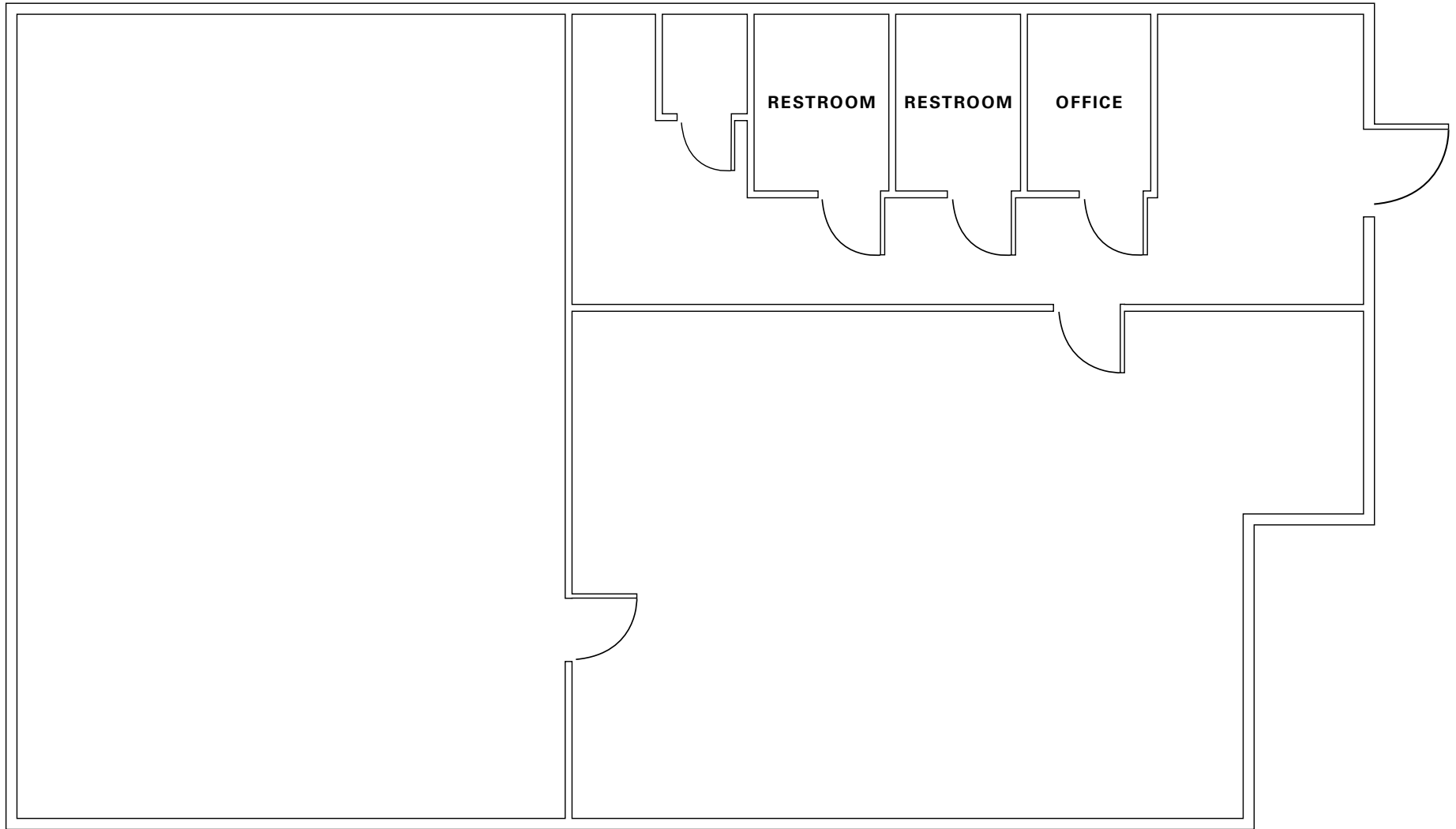
39,441± ADT

17,087± ADT

Figarden Drive at Santa Fe Avenue
(Intersection)

Bullard Avenue at Figarden Drive
(Intersection)

Source: Kalibrate TrafficMetrix 2025



VILLAGE WALK SHOPPING CENTER
FRESNO, CA

PROPERTY
PHOTOS



VILLAGE WALK SHOPPING CENTER

FRESNO, CA

RETAIL

MAP



SMALL OFFICE SPACES

17,087±
ADT

VILLAGE WALK
SHOPPING CENTER

39,441±
ADT

SITE

VILLAGE WALK SHOPPING CENTER

FRESNO, CA

AERIAL
MAP



AVAILABLE FOR LEASE
6370 N. FIGARDEN DRIVE | SUITE 104

VILLAGE WALK SHOPPING CENTER

FRESNO, CA

For information, please contact:

Shane Sousa

Sales Associate

t 559-447-6221

shane@retailcalifornia.com

CA RE Lic. #02152527

Nick Frechou

Senior Vice President

t 559-447-6266

nick@retailcalifornia.com

CA RE Lic. #01887999



Independently Owned and Operated
Corporate License #00020875
retailcalifornia.com

FRESNO OFFICE
7480 N. Palm Ave. #101
Fresno, CA 93711
t 559-432-6200

The distributor of this communication is performing acts for which a real estate license is required. The information contained herein has been obtained from sources deemed reliable but has not been verified and no guarantee, warranty or representation, either express or implied, is made with respect to such information. Terms of sale or lease and availability are subject to change or withdrawal without notice.