

FOR LEASE
±6,938 SF INDUSTRIAL

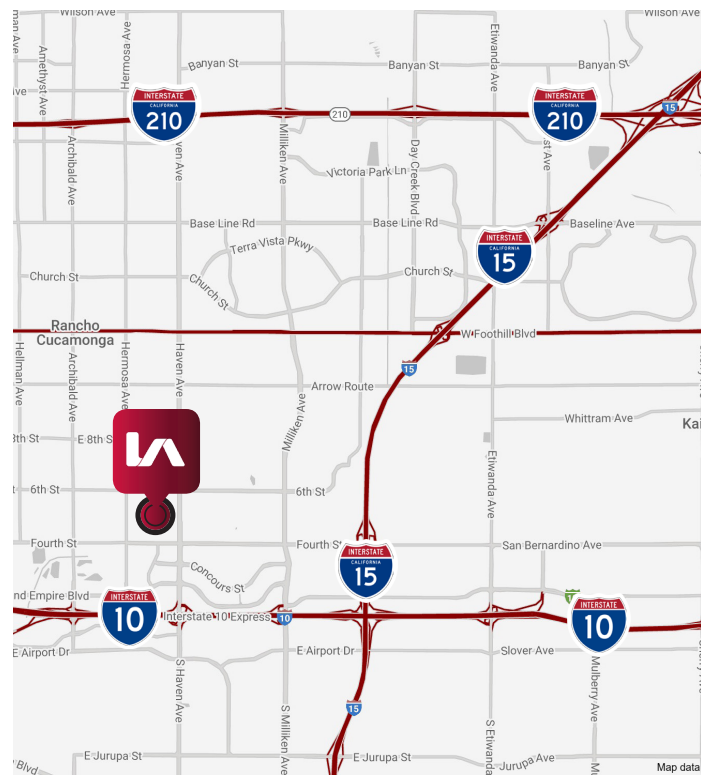
10291 TRADEMARK STREET, SUITE C
Rancho Cucamonga, CA 91730



PROPERTY HIGHLIGHTS

- ±6,938 SF Industrial Available
- ±1,000 SF of Office Space
- High End Business Environment
- Fire Sprinklered
- Two (2) Ground Level Loading Doors
- 400 Amps, 120/208 Volt Power
- Power and Air lines Distributed Throughout Warehouse
- Convenient Access to the I-10 & I-15 Freeways

LOCATION MAP



JIM RIDENS
D (909) 373-2718
jridens@lee-assoc.com
DRE #00974728

NEIL RIDENS
D (909) 373-2717
nridens@lee-assoc.com
DRE #02106181

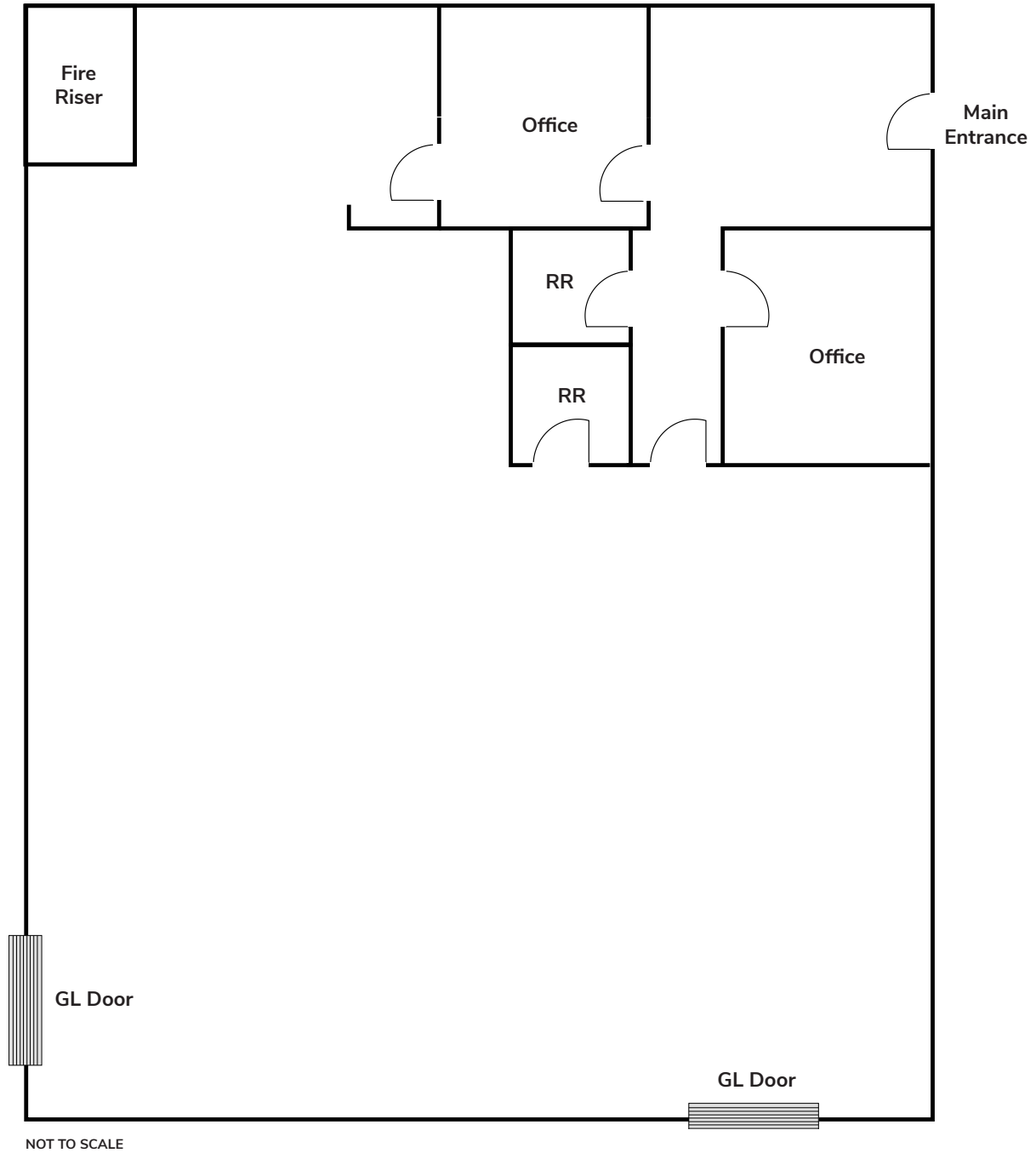
LEE & ASSOCIATES - ONTARIO
3535 Inland Empire Boulevard
Ontario, CA 91764
(909) 989-7771
Corporate ID: 00976995

LEE & ASSOCIATES
COMMERCIAL REAL ESTATE SERVICES

FOR LEASE
±6,938 SF INDUSTRIAL

10291 TRADEMARK STREET, SUITE C
Rancho Cucamonga, CA 91730

BUILDING FLOOR PLAN



JIM RIDENS
D (909) 373-2718
jridens@lee-assoc.com
DRE #00974728

NEIL RIDENS
D (909) 373-2717
nridens@lee-assoc.com
DRE #02106181

LEE & ASSOCIATES - ONTARIO
3535 Inland Empire Boulevard
Ontario, CA 91764
(909) 989-7771
Corporate ID: 00976995

LEE & ASSOCIATES
COMMERCIAL REAL ESTATE SERVICES

FOR LEASE
±6,938 SF INDUSTRIAL

10291 TRADEMARK STREET, SUITE C
Rancho Cucamonga, CA 91730



JIM RIDENS
D (909) 373-2718
jridens@lee-assoc.com
DRE #00974728

NEIL RIDENS
D (909) 373-2717
nridens@lee-assoc.com
DRE #02106181

LEE & ASSOCIATES - ONTARIO
3535 Inland Empire Boulevard
Ontario, CA 91764
(909) 989-7771
Corporate ID: 00976995

LEE & ASSOCIATES
COMMERCIAL REAL ESTATE SERVICES

lee-associates.com

All information furnished regarding property for sale, rental or financing is from sources deemed reliable, but no warranty or representation is made to the accuracy thereof and same is submitted to errors, omissions, change of price, rental or other conditions prior to sale, lease or financing or withdrawal without notice. No liability of any kind is to be imposed on the broker herein.

FOR LEASE
±6,938 SF INDUSTRIAL

10291 TRADEMARK STREET, SUITE C
Rancho Cucamonga, CA 91730



JIM RIDENS
D (909) 373-2718
jridens@lee-assoc.com
DRE #00974728

NEIL RIDENS
D (909) 373-2717
nridens@lee-assoc.com
DRE #02106181

LEE & ASSOCIATES - ONTARIO
3535 Inland Empire Boulevard
Ontario, CA 91764
(909) 989-7771
Corporate ID: 00976995

 **LEE &
ASSOCIATES**
COMMERCIAL REAL ESTATE SERVICES

lee-associates.com

All information furnished regarding property for sale, rental or financing is from sources deemed reliable, but no warranty or representation is made to the accuracy thereof and same is submitted to errors, omissions, change of price, rental or other conditions prior to sale, lease or financing or withdrawal without notice. No liability of any kind is to be imposed on the broker herein.