

FOR LEASE

Westridge Mall

WEST SIDE RETAIL - ELLIS ROAD CORRIDOR

8505 West 26th Street | Sioux Falls, SD 57106



SIZE

2,152 sqft



PRICE

\$17.00 psf (NNN)

Estimated NNN: \$5.50 psf



LOCATION

Located along the rapidly developing Ellis Road Corridor, this site is near schools and surrounded by thriving retail destinations, townhomes, single-family homes, and modern apartments.



DELIVERY

Landlord will deliver a white box space, closer to being operational than a dark shell, reducing the time required for tenant improvements. Call Broker for details.



T.I.A.

\$30 psf



AREA TENANTS

Shenanigans Sports Bar & Grill, Fit Body Boot Camp, Ellis Nail Bar, Risen Hope Baptist Church, Edward Jones, State Farm Insurance, Casey's, Lewis Drug Store, Sanford Acute Care, Fareway Meat and Grocery, Valentino's Pizza, Dollar Tree, McDonald's, Valvoline, Starbucks, Taco Bell

Information deemed reliable, but not guaranteed.

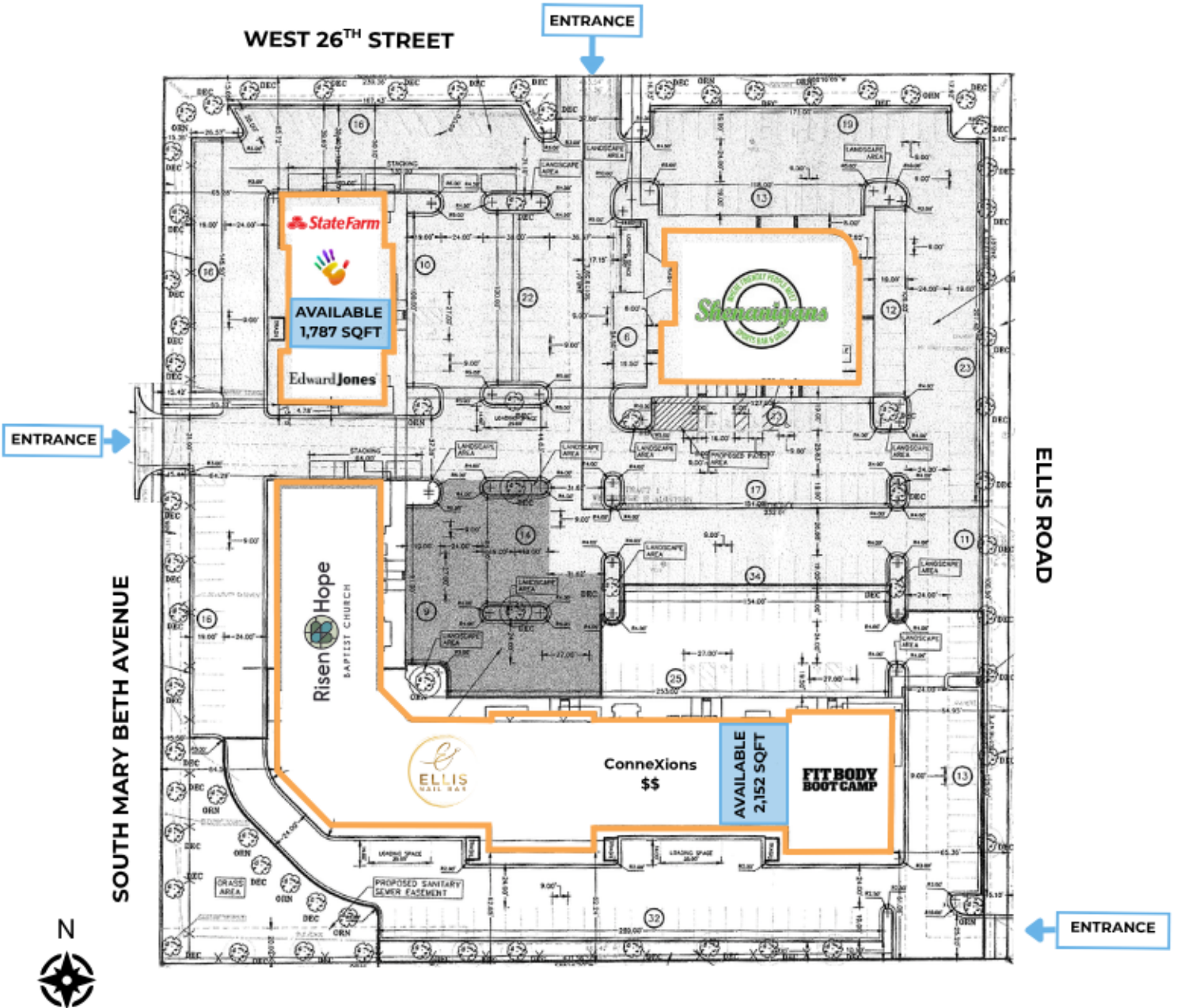
FOR LEASE

Area Map Westridge Mall



FOR
LEASE

Site Map
Westridge Mall



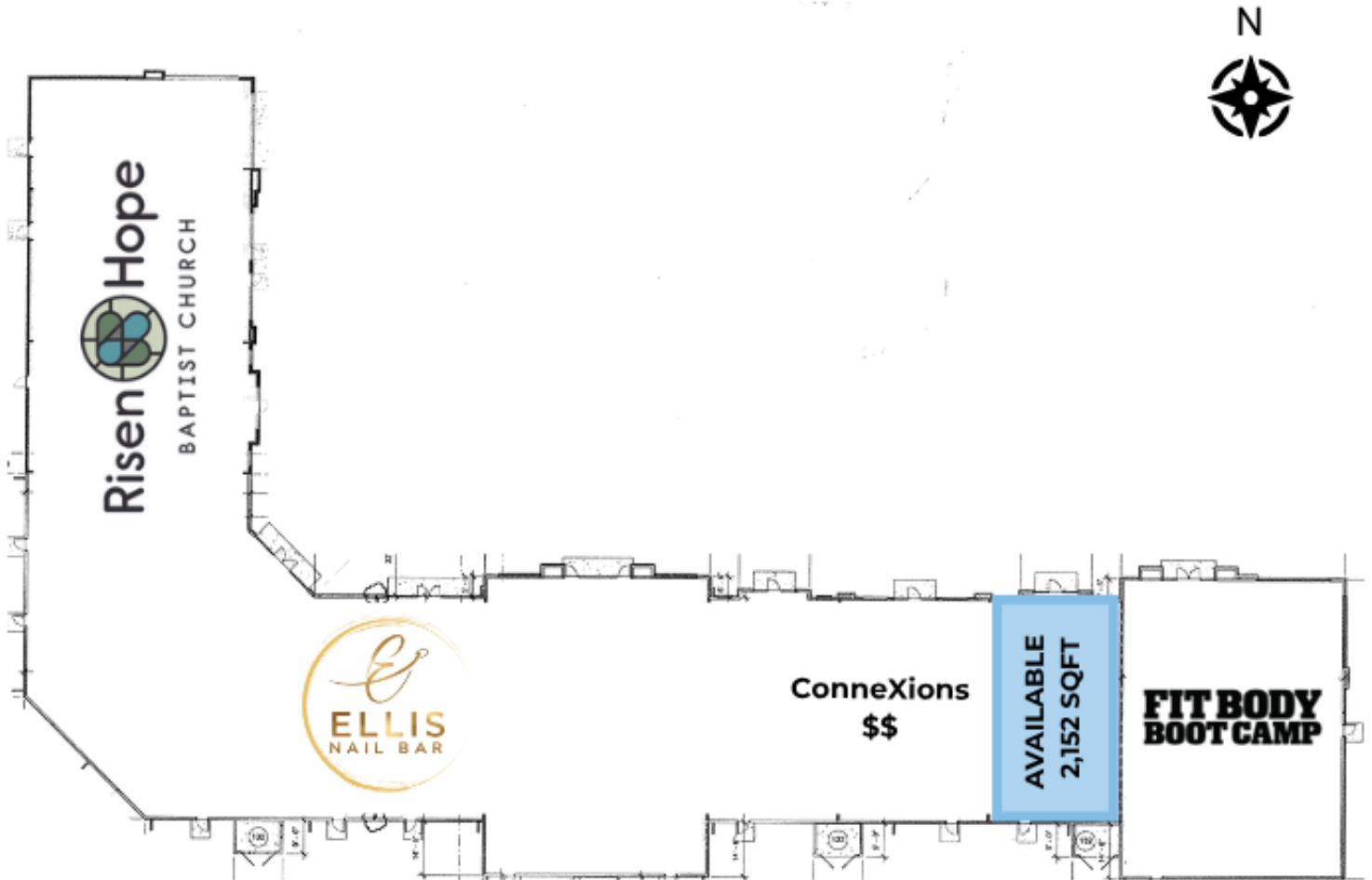
**FOR
LEASE**

Site Overview
Westridge Mall



FOR
LEASE

Building Floor Plan
Westridge Mall



FOR
LEASE

Photos
Westridge Mall

