

1265 WASHINGTON BLVD
SUITE #310
DETROIT, MICHIGAN



**SIGNATURE
ASSOCIATES**
KNOW SIGNATURE | KNOW RESULTS

OFFICE FOR SUBLEASE
2,237 Square Feet Available

BOOK TOWER



**CLICK HERE FOR MORE
INFO ON THE BOOK TOWER**

PROPERTY FEATURES

- 2,237 square feet available
- Spectacular, acclaimed Book Tower, restored by Bedrock
- Second floor sublease, ready for build out with tenant improvement allowance available
- Building amenities include restaurants, exclusive tenant lounge, fitness center, world class restaurants and rooftop bar
- Sublease through 12/31/2031
- Lease Rate: \$30.00/sq. ft. G + E

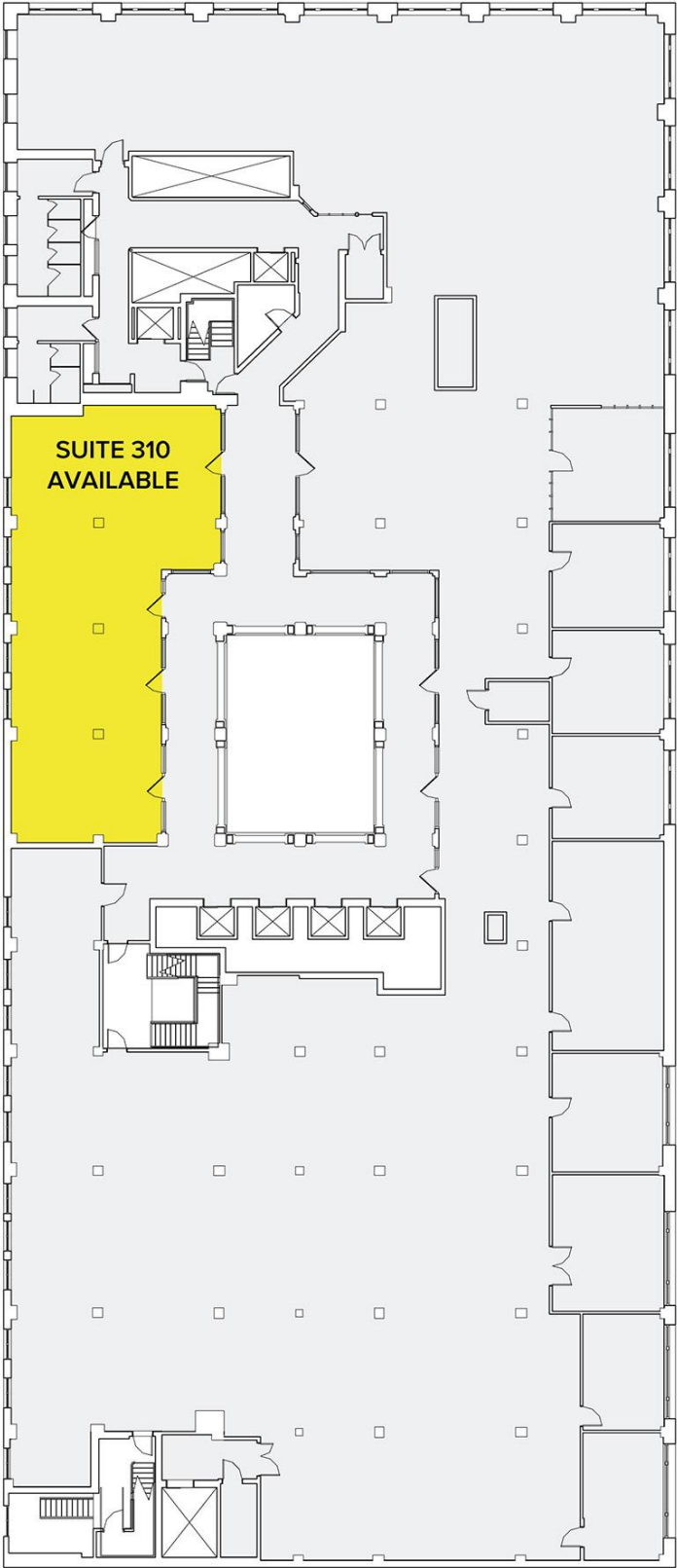
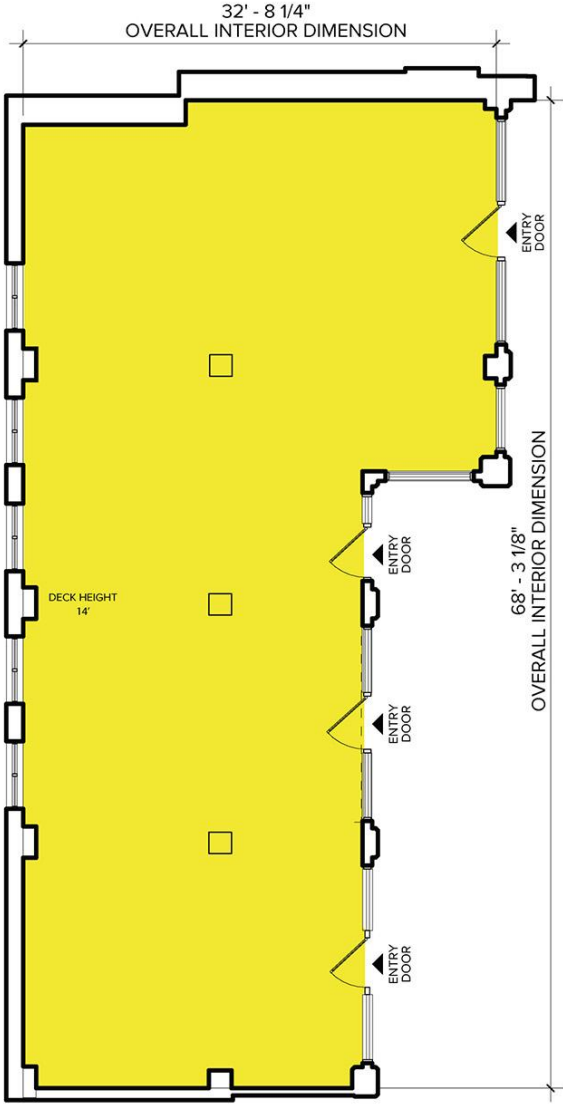


For more information, please contact:

CHRIS SECONTINE
(248) 799 3174
csecontine@signatureassociates.com

SIGNATURE ASSOCIATES
One Towne Square, Suite 1200
Southfield, MI 48076
www.signatureassociates.com

Floor Plan



For more information, please contact:
CHRIS SECONTINE
(248) 799 3174
csecontine@signatureassociates.com

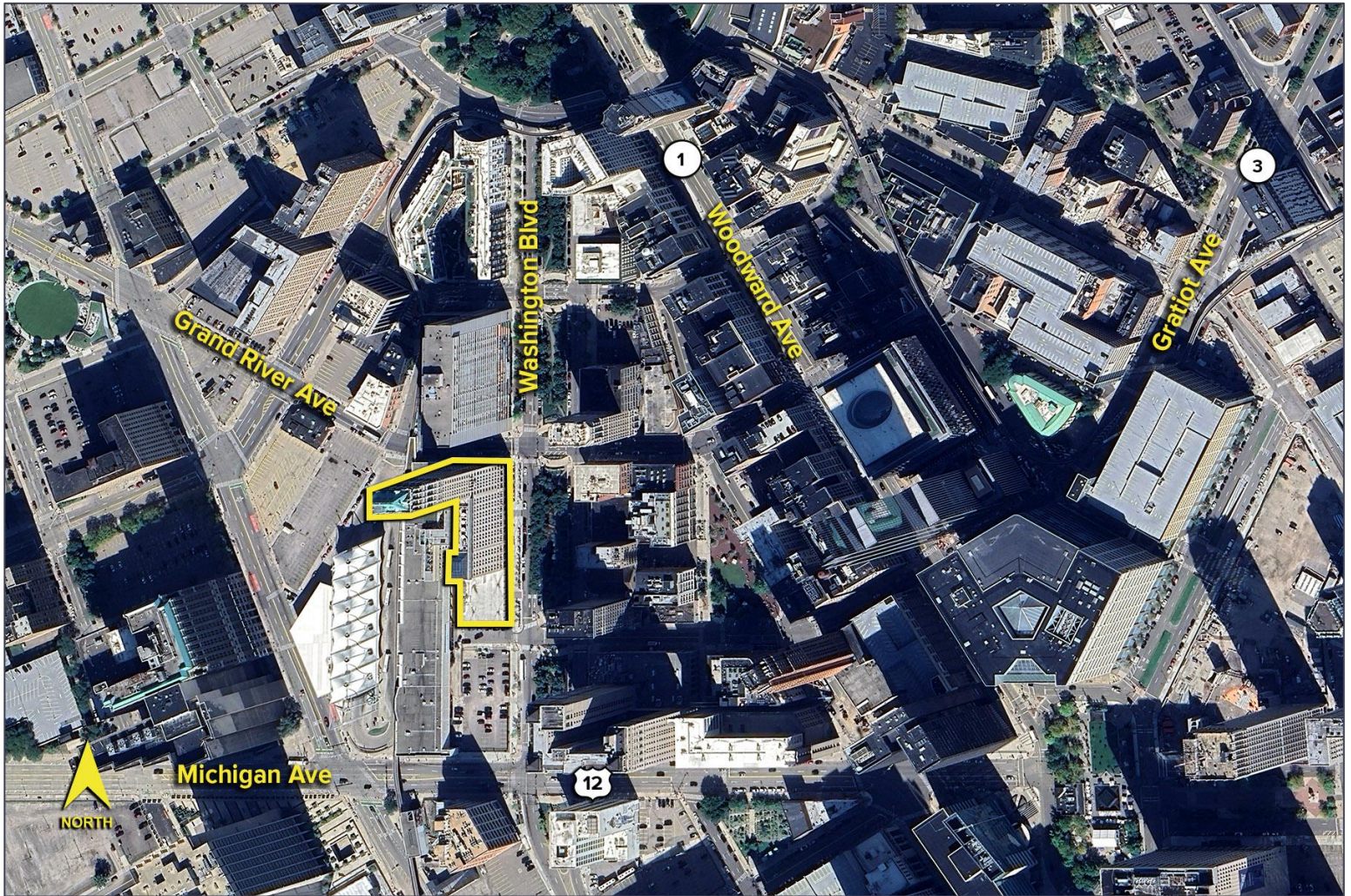
SIGNATURE ASSOCIATES
One Towne Square, Suite 1200
Southfield, MI 48076
www.signatureassociates.com

1265 Washington Boulevard – Detroit, Michigan

Office For Sublease

2,237
Square Feet
AVAILABLE

Aerial



For more information, please contact:

CHRIS SECONTINE
(248) 799 3174
csecontine@signatureassociates.com

SIGNATURE ASSOCIATES
One Towne Square, Suite 1200
Southfield, MI 48076
www.signatureassociates.com