

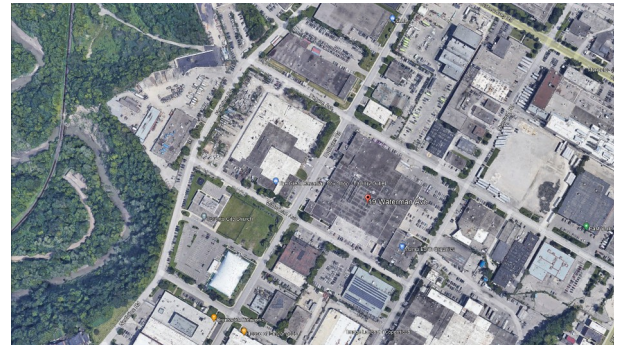
## 19 WATERMAN AVENUE Suite 211 FOR LEASE



### PROPERTY SUMMARY

**Rent:** ~~\$12.90~~ **\$11.00**  
**Additional Rent:** **\$ 6.95**

- Attractive Lease Rate
- Great Warden + O'Connor Location
- Corner Unit with Plenty of Light
- 922 SF - 2 Offices + Open Area
- Close to TTC and Major Highways
- Renovated + Move In Ready
- Free Parking

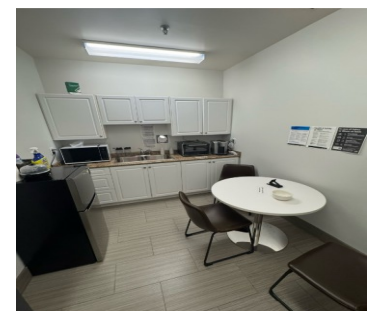
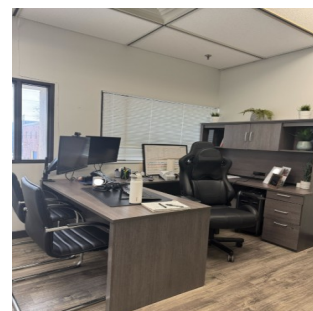
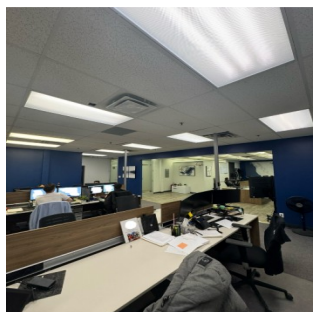
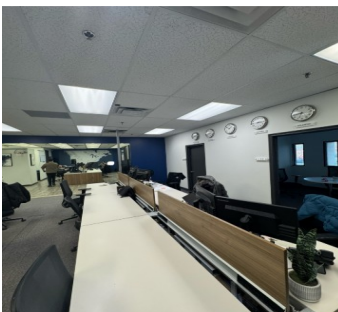
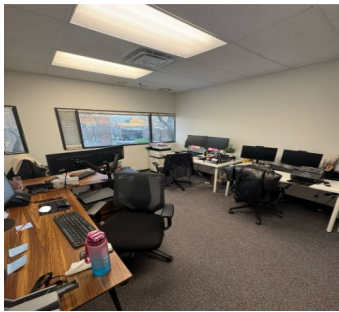


This information has been obtained from sources believed reliable. We have not verified it and make no guarantee, warranty or representation about it. Any projections, opinions, assumptions or estimates used are for example only and do not represent the current or future performance of the property. You and your advisers should conduct a careful, independent investigation of the property to determine to your satisfaction the suitability of the property for your needs.

**Sean F. Boyle**, Broker  
President  
416-817-8962  
sboyle@boylecommercial.com

**BOYLE Commercial**  
292 York Mills Road  
Toronto, ON M2L 1L1  
BOYLEcommercial.com

## PHOTOS



This information has been obtained from sources believed reliable. We have not verified it and make no guarantee, warranty or representation about it. Any projections, opinions, assumptions or estimates used are for example only and do not represent the current or future performance of the property. You and your advisers should conduct a careful, independent investigation of the property to determine to your satisfaction the suitability of the property for your needs.