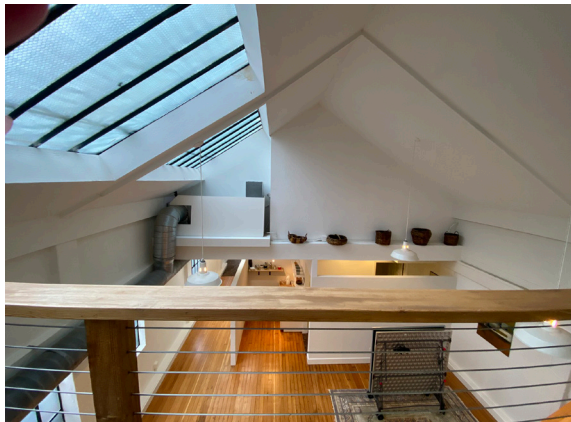




Downtown Creative Office for Lease

**263 HATCH LANE
BURLINGAME, CA**



Property Highlights

±2,145 square feet available

Additional ±305 sf space can be contiguous

2 conference rooms, 2nd floor open balcony and private outdoor deck

Kitchenette and private bathroom

Heart of Downtown Burlingame - 1 block walk to Burlingame Avenue restaurants, amenities, and Caltrain Station

Rental Rate: \$4.35/SF Gross

Tenant pays PG&E and garbage

For information, please contact:

Deborah O'Reilly

Director

t 650-784-3426

deborah.oreilly@nmrk.com

CA RE License #01895522

nmrk.com

NEWMARK

The information contained herein has been obtained from sources deemed reliable but has not been verified and no guarantee, warranty or representation, either express or implied, is made with respect to such information. Terms of sale or lease and availability are subject to change or withdrawal without notice. 20-0730 • 12/20

263 HATCH LANE BURLINGAME, CA



For information, please contact:

Deborah O'Reilly

Director

t 650-784-3426

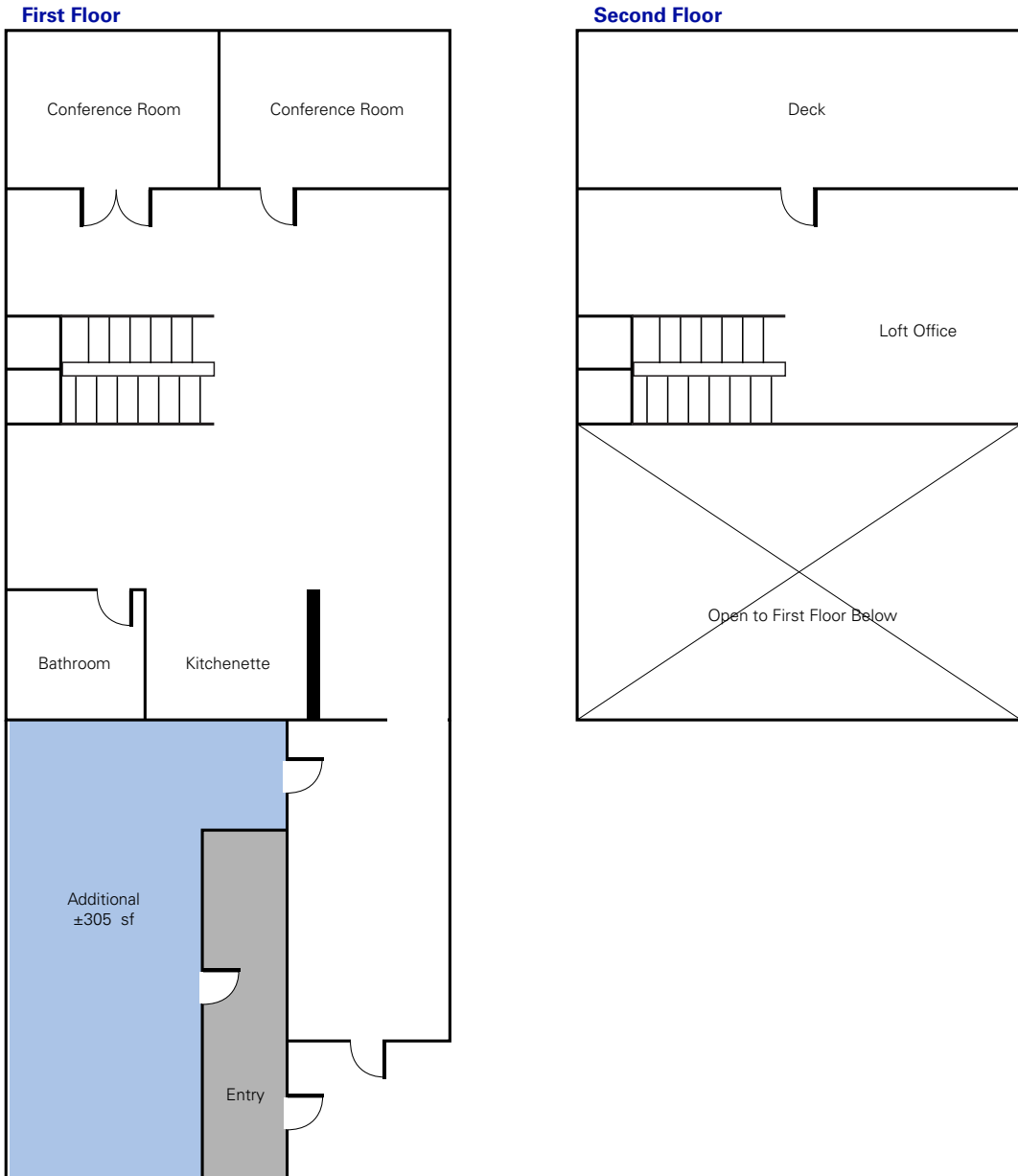
deborah.oreilly@nmrk.com

CA RE License #01895522

nmrk.com

NEWMARK

263 HATCH LANE BURLINGAME, CA



For information, please contact:

Deborah O'Reilly

Director

t 650-784-3426

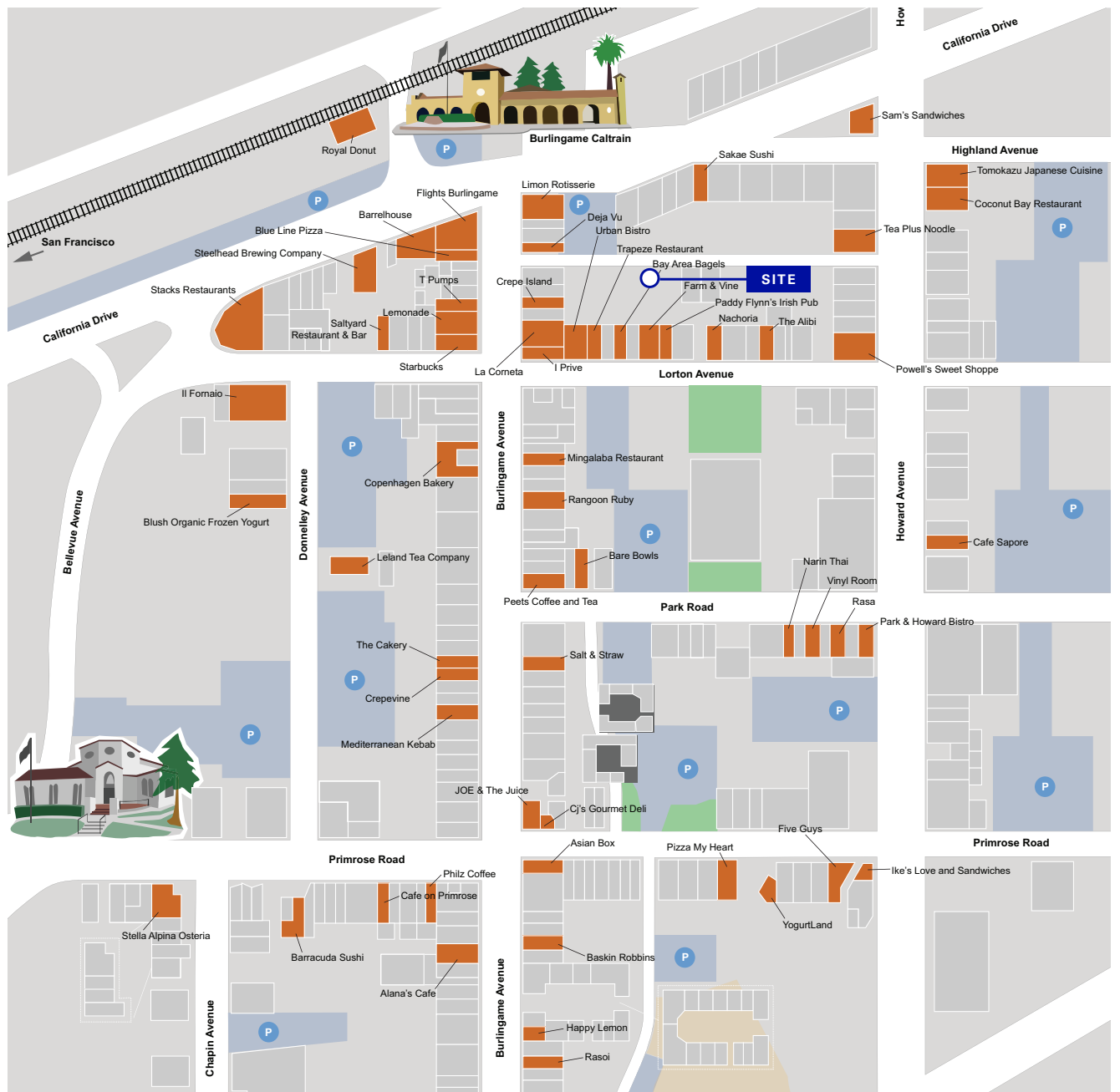
deborah.oreilly@nrmk.com

CA RE License #01895522

nrmk.com

NEWMARK

263 HATCH LANE BURLINGAME, CA



For information, please contact:

Deborah O'Reilly

Director

t 650-784-3426

deborah.oreilly@nrmk.com

CA RE License #01895522

nrmk.com