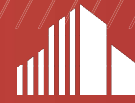


FOR LEASE

# 4350 LOCKHILL SELMA

SAN ANTONIO, TEXAS



CUSHMAN &  
WAKEFIELD



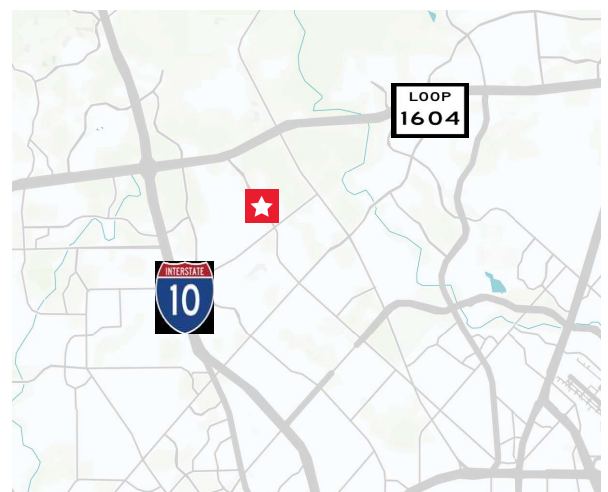
## PROPERTY HIGHLIGHTS

Located in the heart of the high-growth Northwest submarket. The property is located on Lockhill-Selma Rd., one mile inside Loop 1604 at DeZavala and ten minutes from San Antonio International Airport. The property has great access to IH-10, Loop 1604 and Hwy 281 with close proximity to major retail, 90 restaurants and a variety of services.

**RENTAL RATE**      \$19.00 NNN

## BUILDING FEATURES

- Class A Office
- Building Size: 116,545 SF
- Parking: 639 Surface Spaces; 5.5:1,000 SF Ratio
- Monument Signage Available
- TPO, LEED Approved Roof
- B-2 General business District Zoning
- 30' Column Spacing



FOR LEASE

# 4350 LOCKHILL SELMA

SAN ANTONIO, TEXAS



CUSHMAN &  
WAKEFIELD

## SPACE AVAILABLE

Space	Space Use	Lease Rate	Lease Type	Size (SF)
Suite 110	Office Building	\$19.00/SF/Yr	NNN	5,761 SF
Suite 155	Office Building	\$19.00/SF/Yr	NNN	7,139 SF
Suite 160	Office Building	\$19.00/SF/Yr	NNN	3,928 SF
Suite 250	Office Building	\$19.00/SF/Yr	NNN	29,040 SF
Suite 300	Office Building	\$19.00/SF/Yr	NNN	40,631 SF

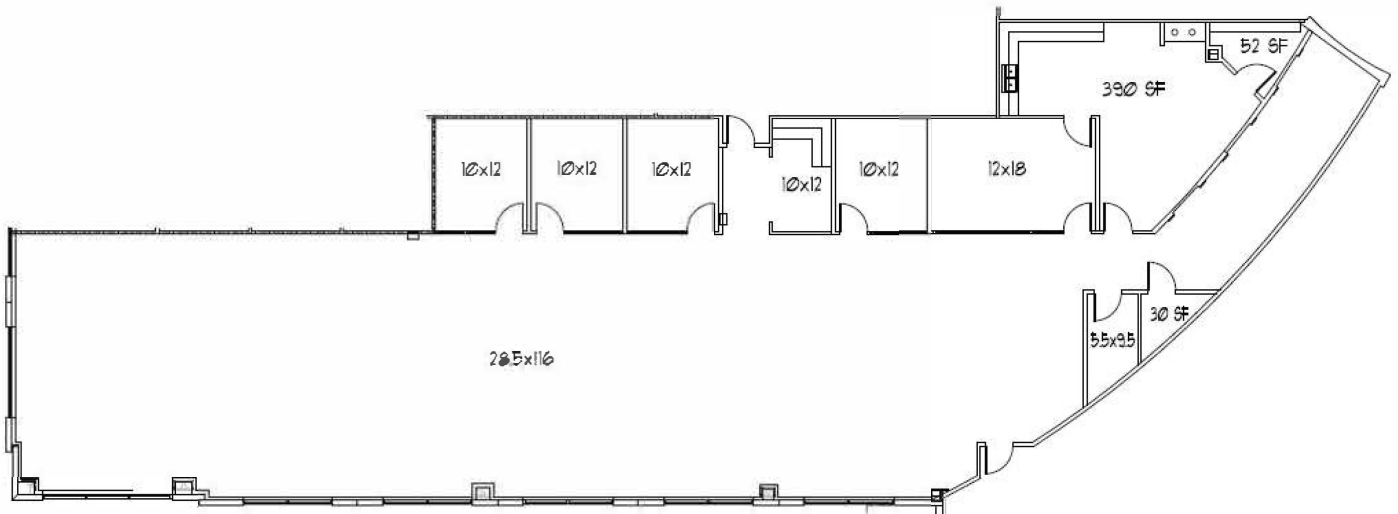


**FOR LEASE**  
**4350 LOCKHILL SELMA**  
SAN ANTONIO, TEXAS 78240



## FLOOR PLAN

Suite 110 - 5,761 SF



For more information, please contact:

**Bryan Sethney**  
**Managing Director**  
+1 210 469 3649  
bryan.sethney@cushwake.com

200 W Cesar Chavez Street  
Suite 300  
Austin, Texas 78701

T +1 512 474 2400

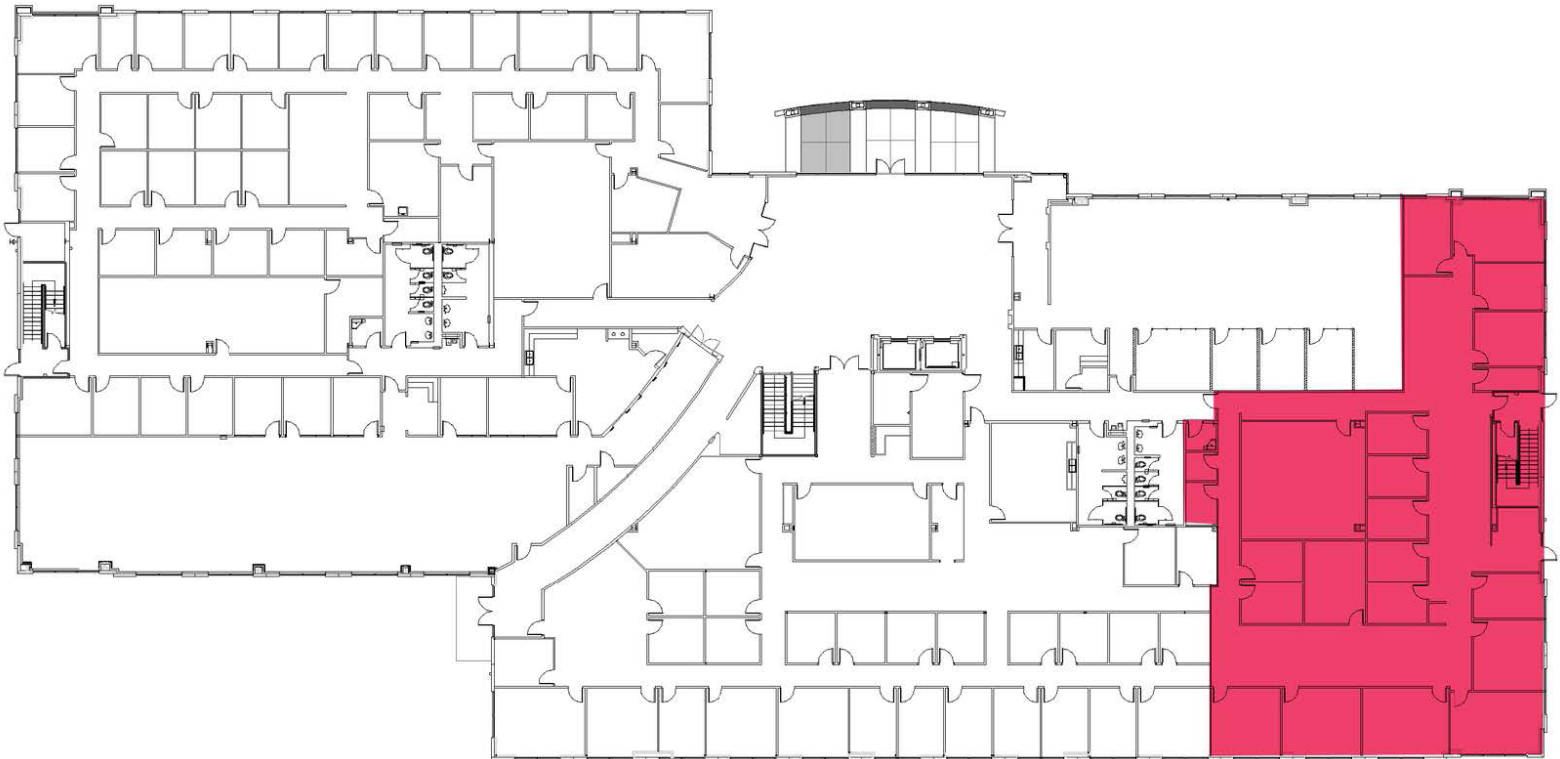
[cushmanwakefield.com](http://cushmanwakefield.com)

**FOR LEASE**  
**4350 LOCKHILL SELMA**  
SAN ANTONIO, TEXAS 78240



## FLOOR PLAN

Suite 155 - 7,139 SF



For more information, please contact:

**Bryan Sethney**  
**Managing Director**  
+1 210 305 4280  
bryan.sethney@cushwake.com

4040 Broadway Street  
Suite 602  
San Antonio, Texas 78209

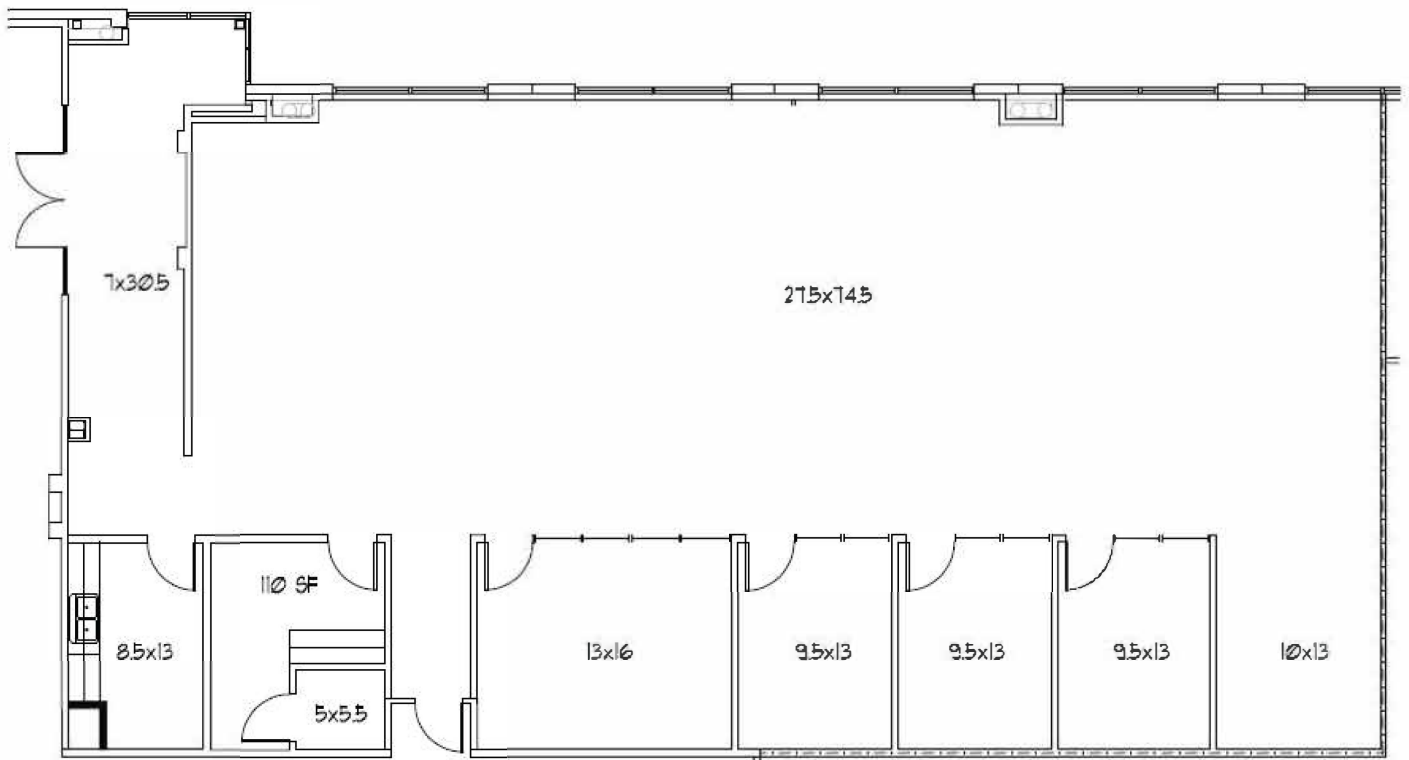
[cushmanwakefield.com](http://cushmanwakefield.com)

**FOR LEASE**  
**4350 LOCKHILL SELMA**  
SAN ANTONIO, TEXAS 78240



## FLOOR PLAN

Suite 160 - 3,928 SF



For more information, please contact:

**Bryan Sethney**  
Managing Director  
+1 210 469 3649  
bryan.sethney@cushwake.com

200 W Cesar Chavez Street  
Suite 300  
Austin, Texas 78701

T +1 512 474 2400

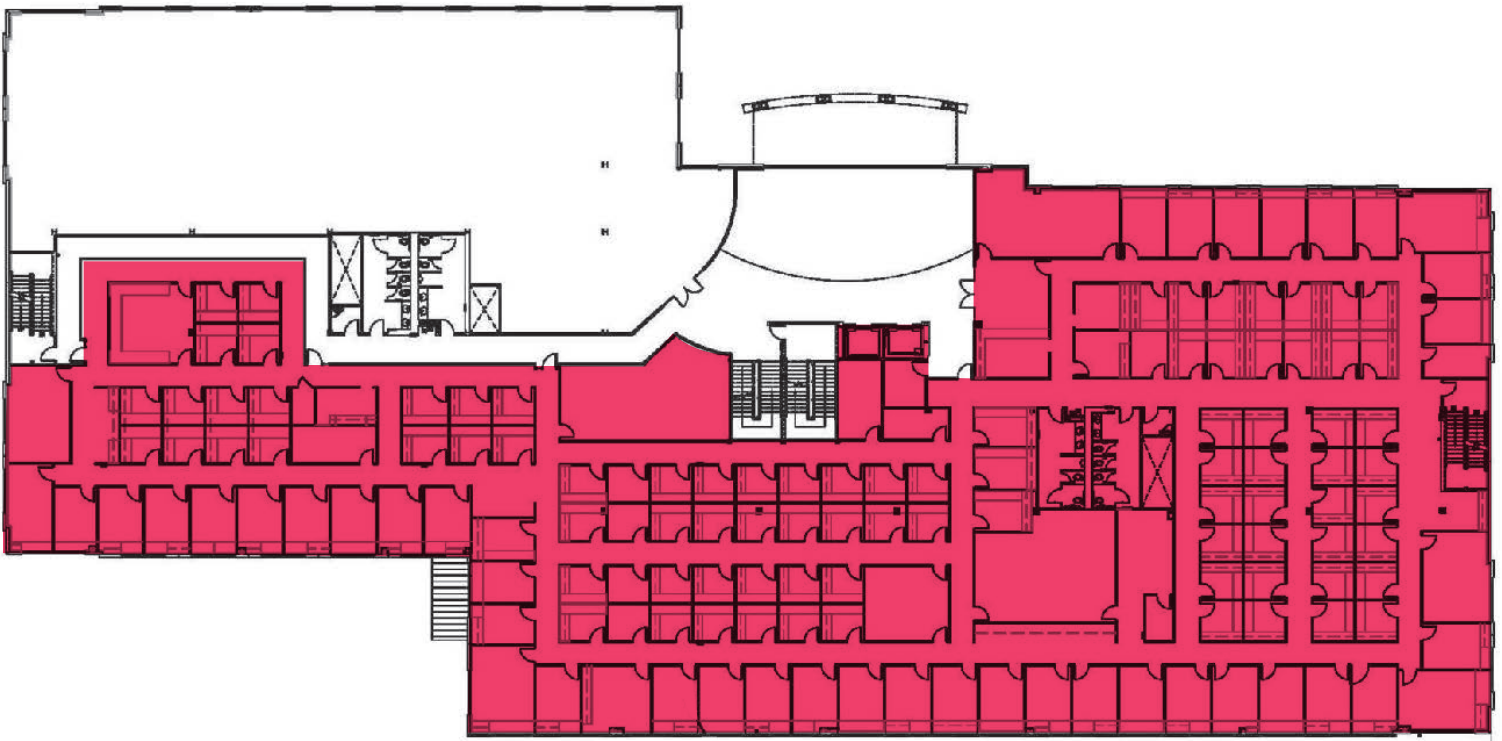
[cushmanwakefield.com](http://cushmanwakefield.com)

**FOR LEASE**  
**4350 LOCKHILL SELMA**  
SAN ANTONIO, TEXAS 78240



## FLOOR PLAN

Suite 250 - 29,040 SF



For more information, please contact:

**Bryan Sethney**  
**Managing Director**  
+1 210 305 4280  
[bryan.sethney@cushwake.com](mailto:bryan.sethney@cushwake.com)

4040 Broadway Street  
Suite 602  
San Antonio, Texas 78209

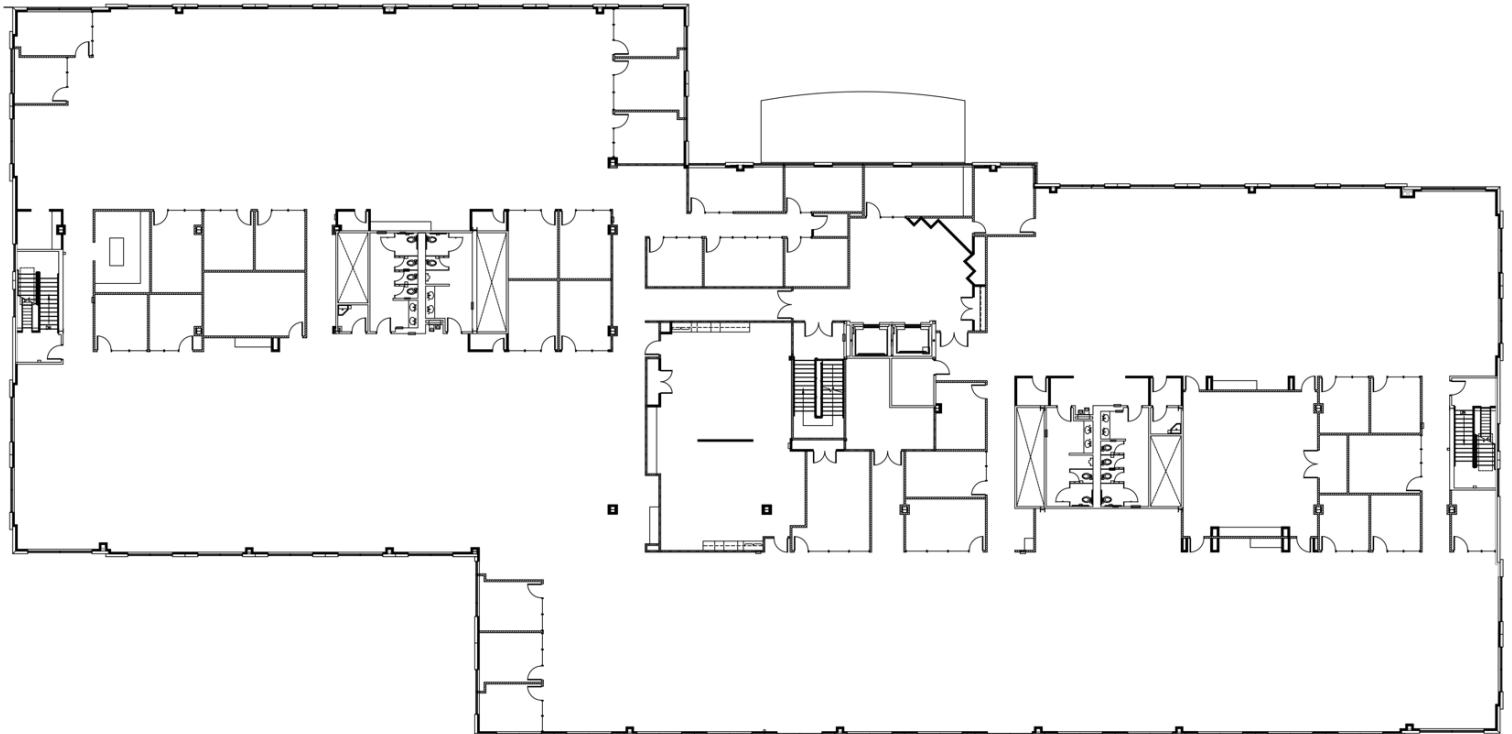
[cushmanwakefield.com](http://cushmanwakefield.com)

**FOR LEASE**  
**4350 LOCKHILL SELMA**  
SAN ANTONIO, TEXAS 78240



## FLOOR PLAN

Suite 300 - 40,631 SF



For more information, please contact:

**Bryan Sethney**  
**Managing Director**  
+1 210 469 3649  
bryan.sethney@cushwake.com

200 W Cesar Chavez Street  
Suite 300  
Austin, Texas 78701

T +1 512 474 2400

[cushmanwakefield.com](http://cushmanwakefield.com)