

INDUSTRIAL FOR SALE

309 SANGO COURT | MILPITAS, CA



±6,000 SF Rare Owner-User Building Opportunity

Freestanding ±6,000 SF industrial building

Situated on ±0.5 Acre site

Large fenced and gated side yard

Steel construction with three grade level roll-up doors

~200 Amps at 480 Volts (Buyer to verify)

16' clear height

Potential future residential redevelopment

Asking price: \$2,495,000

CHRIS ROWE

408.588.2313

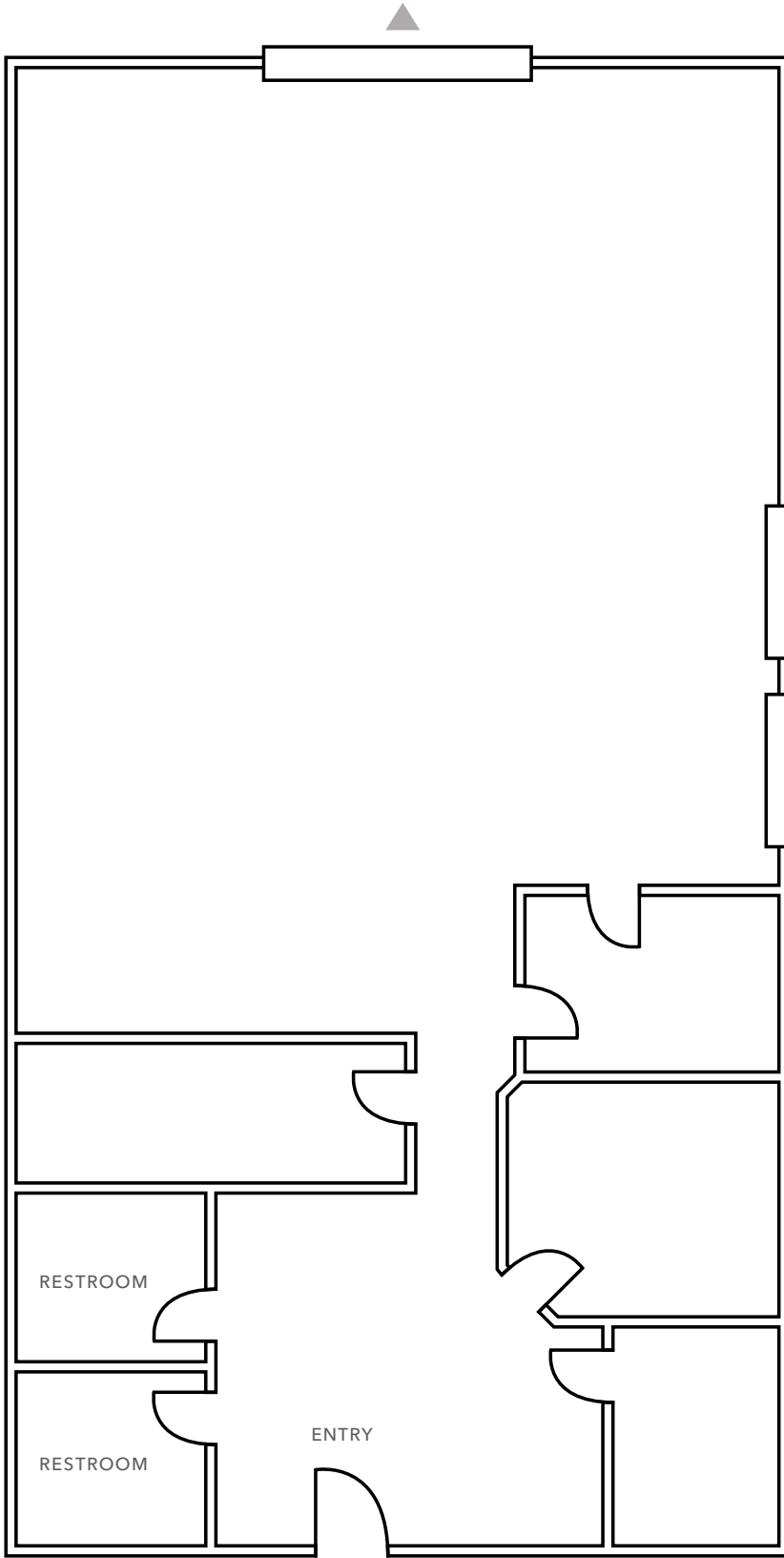
chris.rowe@kidder.com

LIC N° 01329262

KIDDER.COM

This information supplied herein is from sources we deem reliable. It is provided without any representation, warranty, or guarantee, expressed or implied as to its accuracy. Prospective Buyer or Tenant should conduct an independent investigation and verification of all matters deemed to be material, including, but not limited to, statements of income and expenses. Consult your attorney, accountant, or other professional advisor.





±6,000 SF

AVAILABLE

\$2,495,000

SALE PRICE

±0.5 AC

LAND SIZE

NOW

AVAILABLE

CHRIS ROWE

Vice President

408.588.2313

chris.rowe@kidder.com

LIC N° 01329262

▲ Roll Up Door

FLOOR PLAN NOT TO SCALE

KIDDER.COM

This information supplied herein is from sources we deem reliable. It is provided without any representation, warranty, or guarantee, expressed or implied as to its accuracy. Prospective Buyer or Tenant should conduct an independent investigation and verification of all matters deemed to be material, including, but not limited to, statements of income and expenses. Consult your attorney, accountant, or other professional advisor.





KIDDER.COM

This information supplied herein is from sources we deem reliable. It is provided without any representation, warranty, or guarantee, expressed or implied as to its accuracy. Prospective Buyer or Tenant should conduct an independent investigation and verification of all matters deemed to be material, including, but not limited to, statements of income and expenses. Consult your attorney, accountant, or other professional advisor.