

± 3.5 ACRES FOR SALE

1299 DELSEA DRIVE | GLASSBORO, NEW JERSEY

**PROPOSED USES:
SELF STORAGE, SENIOR LIVING, HOTEL,
RESIDENTIAL OR STUDENT HOUSING**

VIEW PROPERTY

ZONED C-5 SHOPPING CENTER DISTRICT & R-1 IN REAR



HIGHLIGHTS

- Approximately 3.5 Acres
- Highly visible and easily accessible from Delsea Drive (Route 47) and Woodbury Road
- Located minutes from Rowan University and multiple highways

TRAFFIC GENERATORS



DEMOGRAPHICS

SOURCE: REGIS ONLINE

| | 1 MILE | 2 MILE | 3 MILE | 5 MILE |
|-------------------|-----------|-----------|-----------|-----------|
| POPULATION | 9,566 | 34,558 | 56,068 | 109,508 |
| AVERAGE HH INCOME | \$139,510 | \$121,644 | \$137,552 | \$148,342 |
| DAYTIME EMPLOYEES | 2,938 | 10,643 | 16,230 | 32,899 |

The information contained herein has been obtained through sources deemed reliable by Soloff Realty & Development, Inc. but cannot be guaranteed for accuracy. We recommend that any information which is of special interest, should be obtained through independent verification. All measurements are approximate. Map Data @ 2026 Google | AADT provided by DVRPC

in LINKEDIN

INSTAGRAM

YOUTUBE

SRD Soloff Realty & Development, Inc.

ONE PRESIDENTIAL BLVD. SUITE 202
BALA CYNWYD, PA 19004
SRDRE.COM

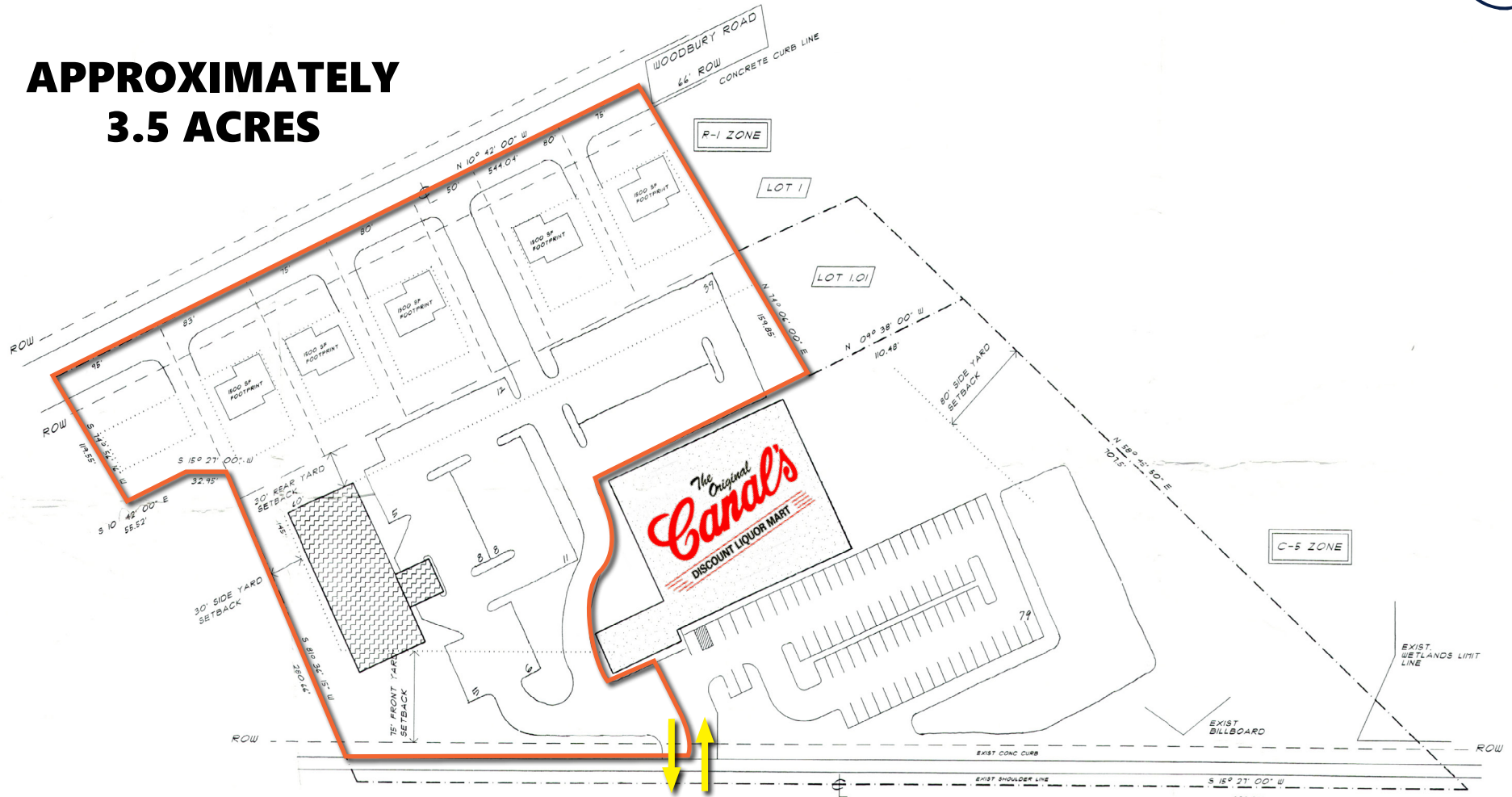
ICSC
INNOVATING COMMERCE
SERVING COMMUNITIES

DAVID DUNKELMAN

EXCLUSIVE AGENT
david@srdre.com | 610-834-0400



**APPROXIMATELY
3.5 ACRES**



**Soloff Realty &
Development, Inc.**

The information contained herein has been obtained through sources deemed reliable by Soloff Realty & Development, Inc. but cannot be guaranteed for accuracy. We recommend that any information which is of special interest, should be obtained through independent verification. All measurements are approximate. Map Data © 2023 Google | AADT provided by DVRPC

**1299 DELSEA DRIVE
GLASSBORO, NEW JERSEY**



S WOODBURY ROAD 12,687 AADT

DELSEA DRIVE 22,977 AADT

47



