



SUBLEASE AVAILABLE  
**THE NATIONAL**  
125 S CLARK ST, CHICAGO, IL



**FLOOR:** 12<sup>th</sup>  
**RSF:** 16,564 RSF  
**TERM:** FLEXIBLE (10/31/2026 or 10/31/2029)  
**RATE:** MID \$20.00's / SF GROSS  
**AVAILABLE:** IMMEDIATELY

## PROPERTY HIGHLIGHTS

- Landscaped outdoor terrace with seating and classic shuffleboard
- Tenant lounge complete with bar and pool table
- On-site marketplace, Revival, features Chicago's neighborhood restaurants in a grab-and-go setting and new concepts from several acclaimed chefs.
- Walking distance to Michigan Avenue and conveniently located close to the Monroe, Quincy and Jackson "L" stations, plus multiple bus stops and divvy stations nearby.

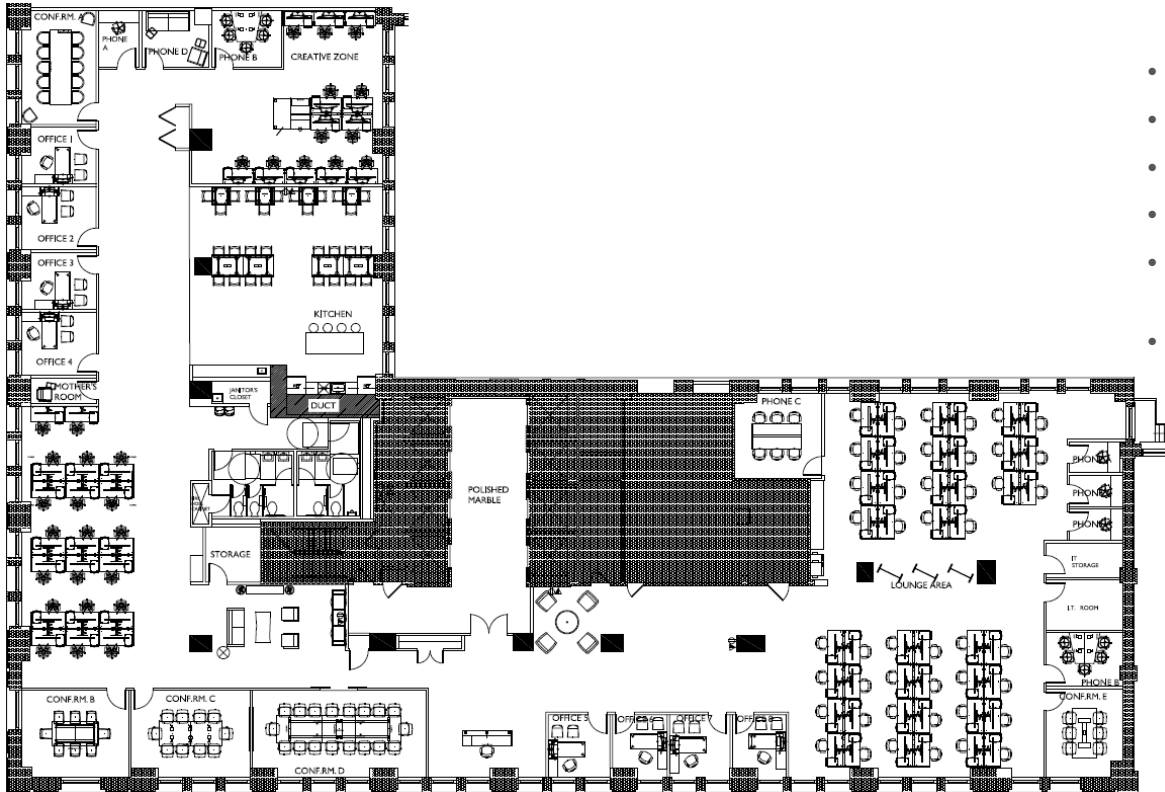
For more information,  
please contact:

**Josh Feldman**  
312.424.8091  
[josh.feldman@cushwake.com](mailto:josh.feldman@cushwake.com)

**Christi Raichle**  
312.338.7044  
[christi.raichle@cushwake.com](mailto:christi.raichle@cushwake.com)

225 W Wacker Dr, Suite 3000  
Chicago, IL 60606

## SPACE PLAN

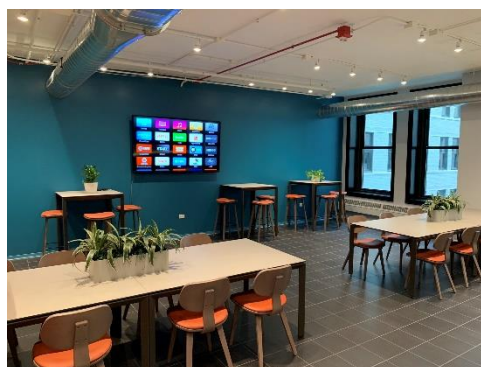
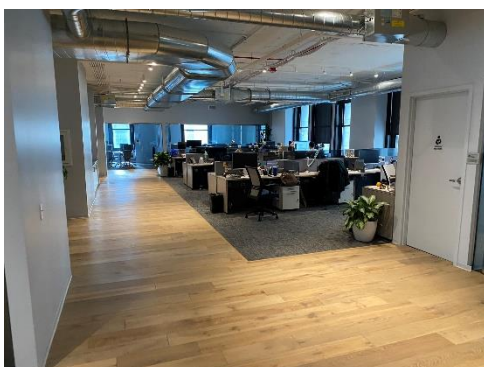
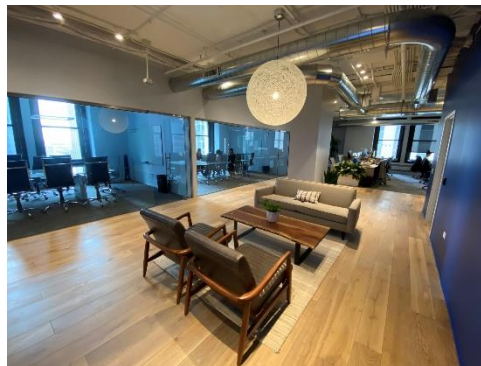
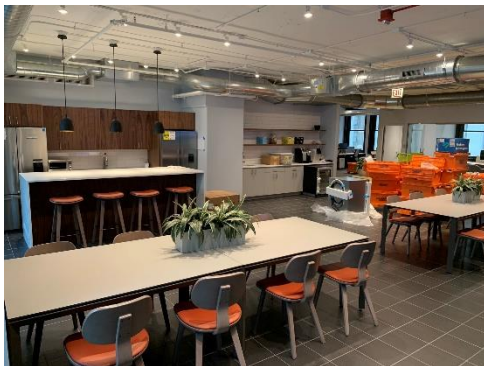


## SPACE FEATURES

- Light court with window line on 5 sides
- 5 Conference Rooms
- 8 Offices
- 78 Workstations
- Expansive café/kitchen
- Multiple phone rooms throughout
- Furniture available.

Click  
Here for  
Virtual  
Tour

## PHOTOS



For more information,  
please contact:

**Josh Feldman**  
312.424.8091  
[josh.feldman@cushwake.com](mailto:josh.feldman@cushwake.com)

**Christi Raichle**  
312.338.7044  
[christi.raichle@cushwake.com](mailto:christi.raichle@cushwake.com)

225 W Wacker Dr, Suite 3000  
Chicago, IL 60606