

For Lease - Price upon request
59 Main Street
Port Washington, NY 11050

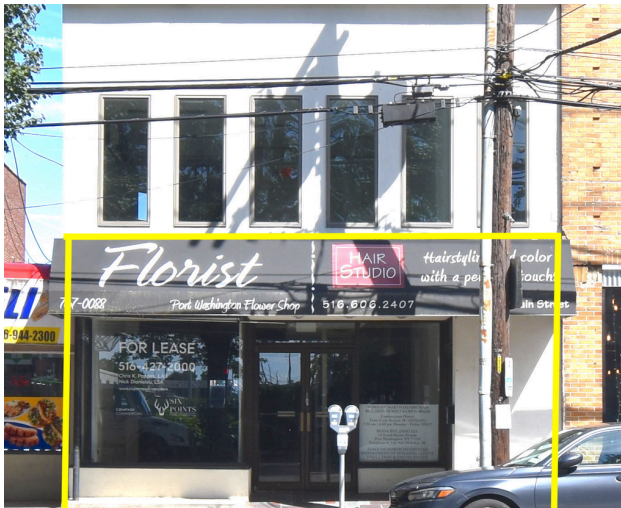


Highlights:

- 1,600 SQFT + basement
- Municipal parking directly in rear
- Zoned Business B - Town of North Hempstead
- Frontage: ~25 Feet
- One ADA compliant bathroom
- Ceiling Height: 11' 6"
- Excellent exposure opposite LIRR platform

Demographics:

	2025	1 Mile	3 Mile	5 Mile
Households		6,128	23,522	65,127
Population		16,537	68,870	186,566
Avg Income		\$179,114.00	\$189,298.00	\$171,325.00



Chris K. Pappas
 VP of Commercial Services
 Lic. Assoc. R.E. Broker
 M: 516.659.6508
 O: 516.427.2000
 chris.pappas@compass.com

Nick Dionisiou
 Lic. Sales Associate
 M: 516.423.6188
 O: 516.427.2000
 nick.dionisiou@compass.com

COMPASS
COMMERCIAL

Disclaimer: Any information set forth herein has been obtained from sources deemed reliable, however, we have not verified it, and make no representation or warranty of any kind, including without limitation: condition, either latent or patent, income, expenses, size or manner of construction of the property, compliance with local law and environmental conditions. All information submitted herein is subject to errors and omissions, and the right of our principal(s), to withdraw, modify, or condition the listing without prior notice.
 THE PROSPECTIVE BUYER OR TENANT SHOULD CAREFULLY VERIFY EACH ITEM OF INCOME, AND ALL OTHER INFORMATION HEREIN