

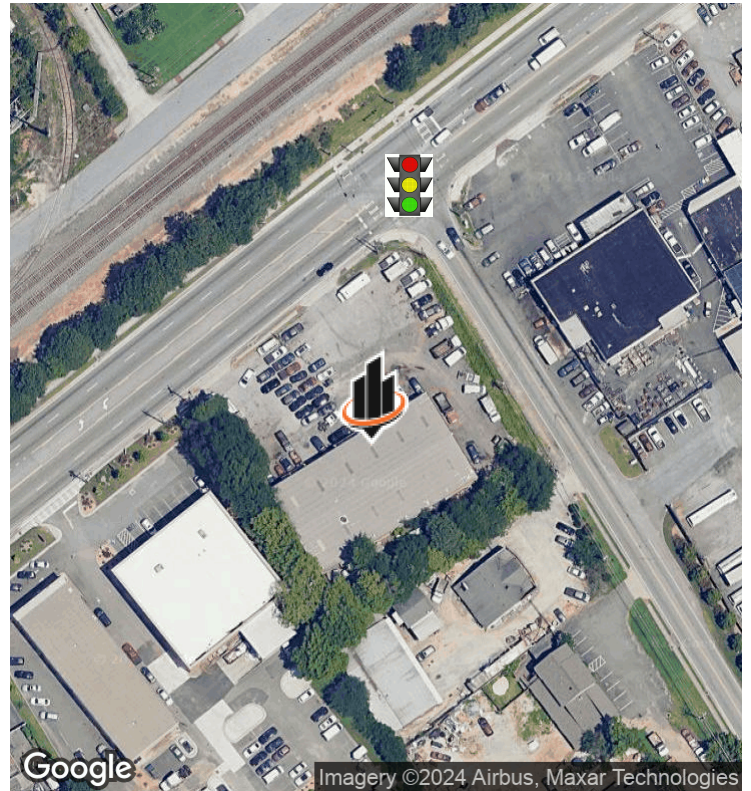
FOR LEASE OR GROUND LEASE
12,000 SF on 1.1 AC Zoned C-2
6910 BUFORD HIGHWAY
Doraville, GA 30340

PRESENTED BY:

MATT LEVIN, CCIM
O: 770.209.1700
matt.levin@crye-leike.com
GA #119351



PROPERTY SUMMARY



OFFERING SUMMARY

LEASE RATE:	\$16.00 SF/yr (NNN)
AVAILABLE SF:	12,000 SF
LOT SIZE:	1.1 Acres
ZONING:	C-2 Gwinnett County
TRAFFIC LIGHT:	Yes

PROPERTY DESCRIPTION

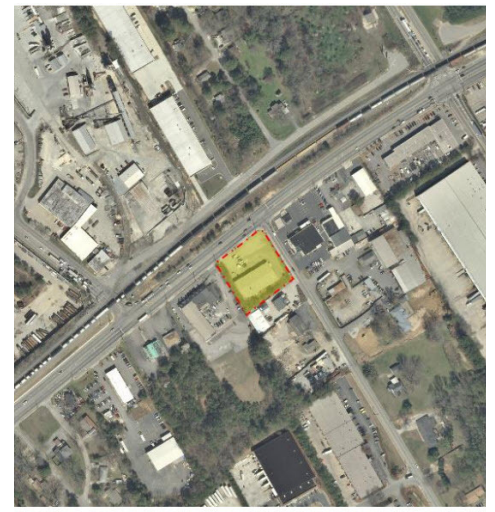
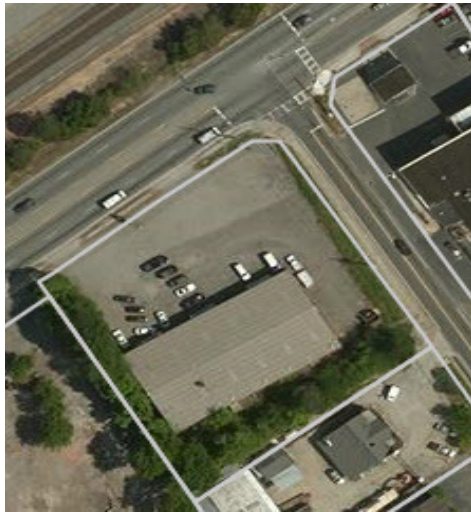
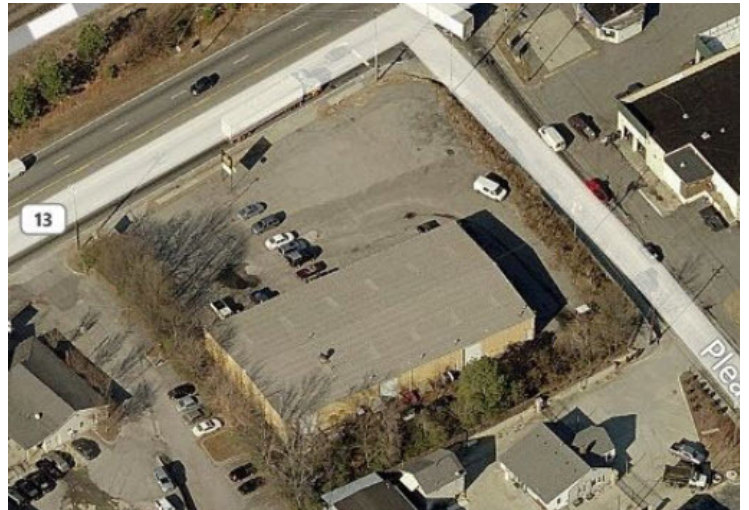
The entire property with 12,000 SF on 1.1 acres zoned C-2 in Gwinnett County is available for long term lease or ground lease. The property is located at a signalized corner with a 23,500 traffic count.

PROPERTY HIGHLIGHTS

- For Lease or Ground Lease
- 12,000 SF on 1.1 Acres
- Zoned C-2 Gwinnett County
- T intersection traffic light
- Traffic count 23,600 east 25,200 west

MATT LEVIN. CCIM
O: 770.209.1700
matt.levin@crye-leike.com
GA #119351

ADDITIONAL PHOTOS



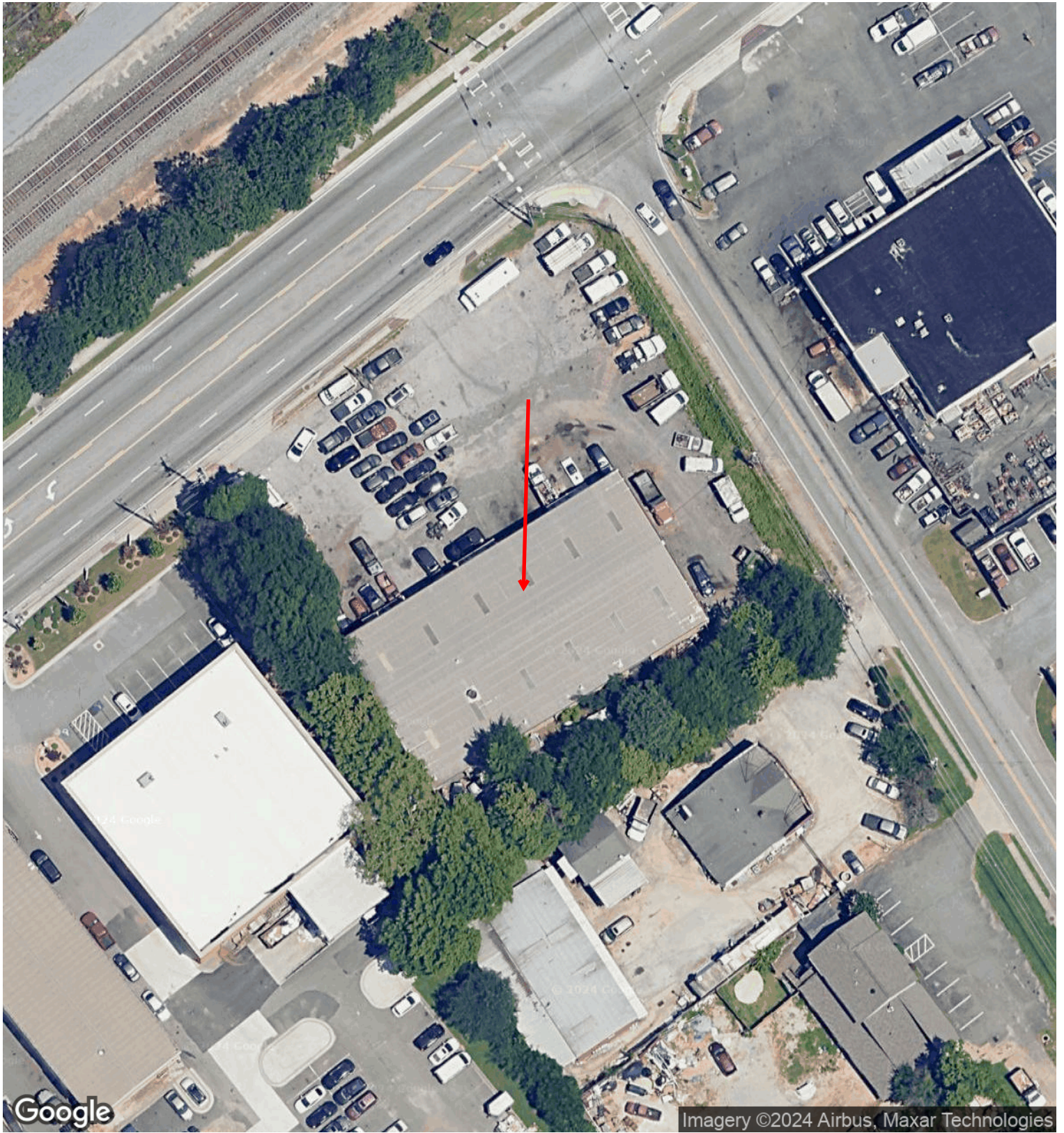
MATT LEVIN, CCIM
 O: 770.209.1700
 matt.levin@crye-leike.com
 GA #119351

AERIAL MAP



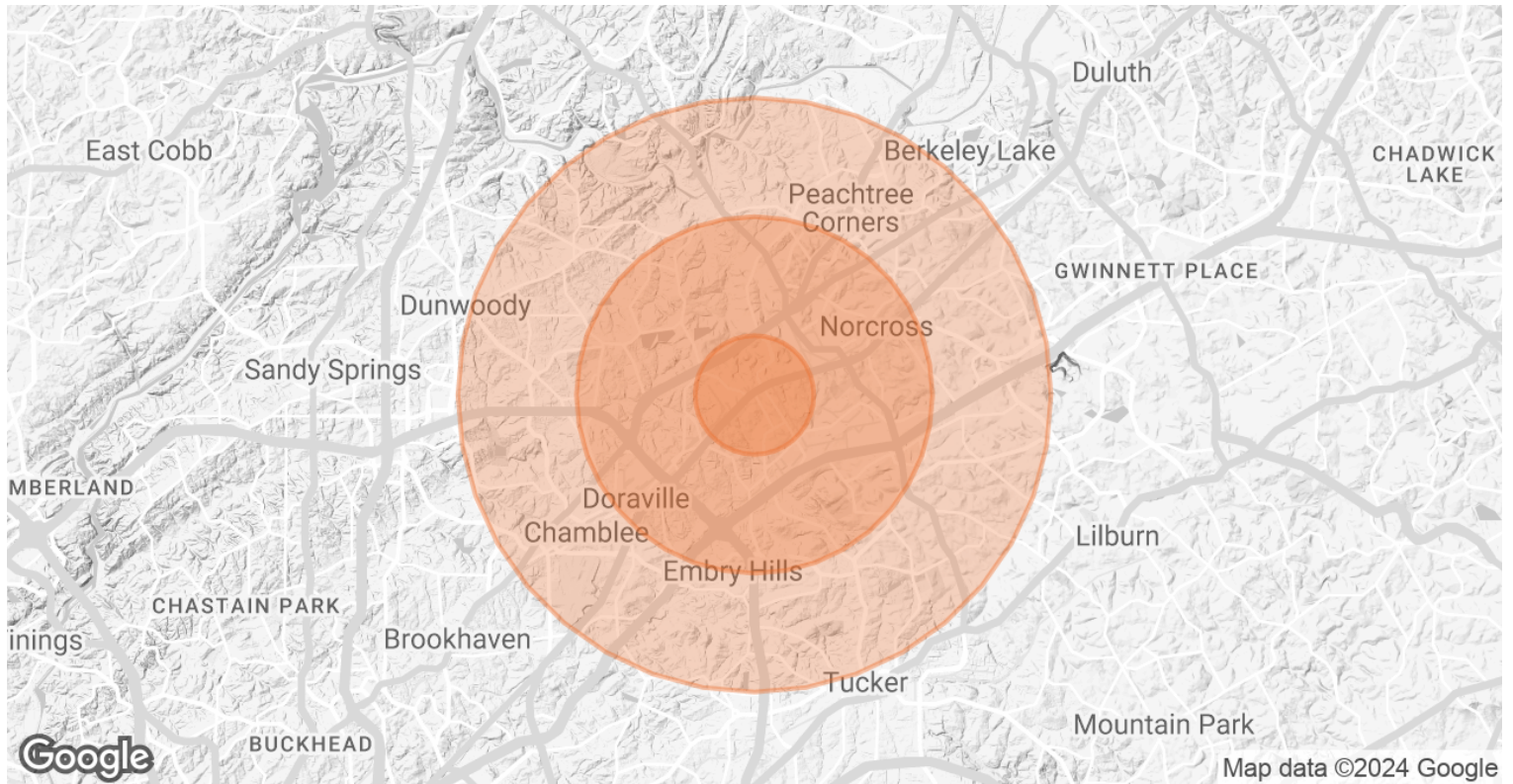
MATT LEVIN, CCIM
O: 770.209.1700
matt.levin@crye-leike.com
GA #119351

AERIAL MAP



MATTH LEVIN, CCIM
O: 770.209.1700
matt.levin@crye-leike.com
GA #119351

DEMOGRAPHICS MAP & REPORT



POPULATION	1 MILE	3 MILES	5 MILES
TOTAL POPULATION	4,837	85,043	225,578
AVERAGE AGE	29.5	30.6	33.7
AVERAGE AGE (MALE)	28.2	29.7	32.7
AVERAGE AGE (FEMALE)	30.3	31.4	34.5
HOUSEHOLDS & INCOME	1 MILE	3 MILES	5 MILES
TOTAL HOUSEHOLDS	1,790	32,012	83,934
# OF PERSONS PER HH	2.7	2.7	2.7
AVERAGE HH INCOME	\$42,464	\$58,169	\$78,129
AVERAGE HOUSE VALUE	\$156,236	\$215,224	\$303,470

2020 American Community Survey (ACS)

MATT LEVIN, CCIM
 O: 770.209.1700
 matt.levin@crye-leike.com
 GA #119351

ADVISOR BIO



MATT LEVIN CCIM

matt.levin@crye-leike.com

Direct: **770.209.1700** | Cell: **678.467.9658**

GA #119351

PROFESSIONAL BACKGROUND

Matt Levin, CCIM, focuses on the sale and leasing of retail, office and industrial properties. With over 30 years experience in the real estate industry, he has completed over 500 transactions valued at \$300 million. Prior to joining Crye-Leike Commercial, Matthew was a multi-year recipient of the Partner Circle Award, SVN Commercial Real Estate's highest recognition, and consistently performed in the top 100 of advisors nationally.

Prior to joining SVN, Matt served as President of Dekalb Realty Company. Previously, he served as a \$250 million Commercial Real Estate Non-Performing Loan Portfolio Manager for the Federal Deposit Insurance Corporation (FDIC).

Matt is a Phoenix Award recipient of the Atlanta Commercial Board of Realtors' Million Dollar Club. He is past president of the Georgia State University, Real Estate Alumni Group, and past chairman of the Scholarship Committee of the Georgia Chapter of CCIM.

Matt received his Bachelor of Arts from Emory University and Master of Science degree in Real Estate from Georgia State University.

He lives with his wife of over 30 years Valerie and daughter Camille. Matt is an avid sailor having first learned from his father. "Sailing is much like life, you're heading for a destination and the changes in weather, wind and current require anticipation, attention and adjustment. Getting there can be as interesting as arriving."

CRYE-LEIKE COMMERCIAL

5490 Bethelview Road
Cumming, GA 30040
770.209.1700

MATT LEVIN, CCIM

O: 770.209.1700

matt.levin@crye-leike.com

GA #119351