

# 7016 CORPORATE WAY

# FOR LEASE

Washington Township, OH 45459

\$ 14.95/SF FSG



## PROPERTY HIGHLIGHTS

- Great Office Space
- 2nd Floor 6,250 SF \$ 14.95/SF FSG
- Elevator
- Fire Sprinklers
- No City Income Tax
- Newer Luxury Vinyl Plank Flooring thru-out

**Birgit Ferguson**

937-242-1734

bferguson@hricommercial.com

2288 Grange Hall Rd. Beavercreek, OH 45431

**HRICommercial.com**

**HRI**  
Commercial Realty

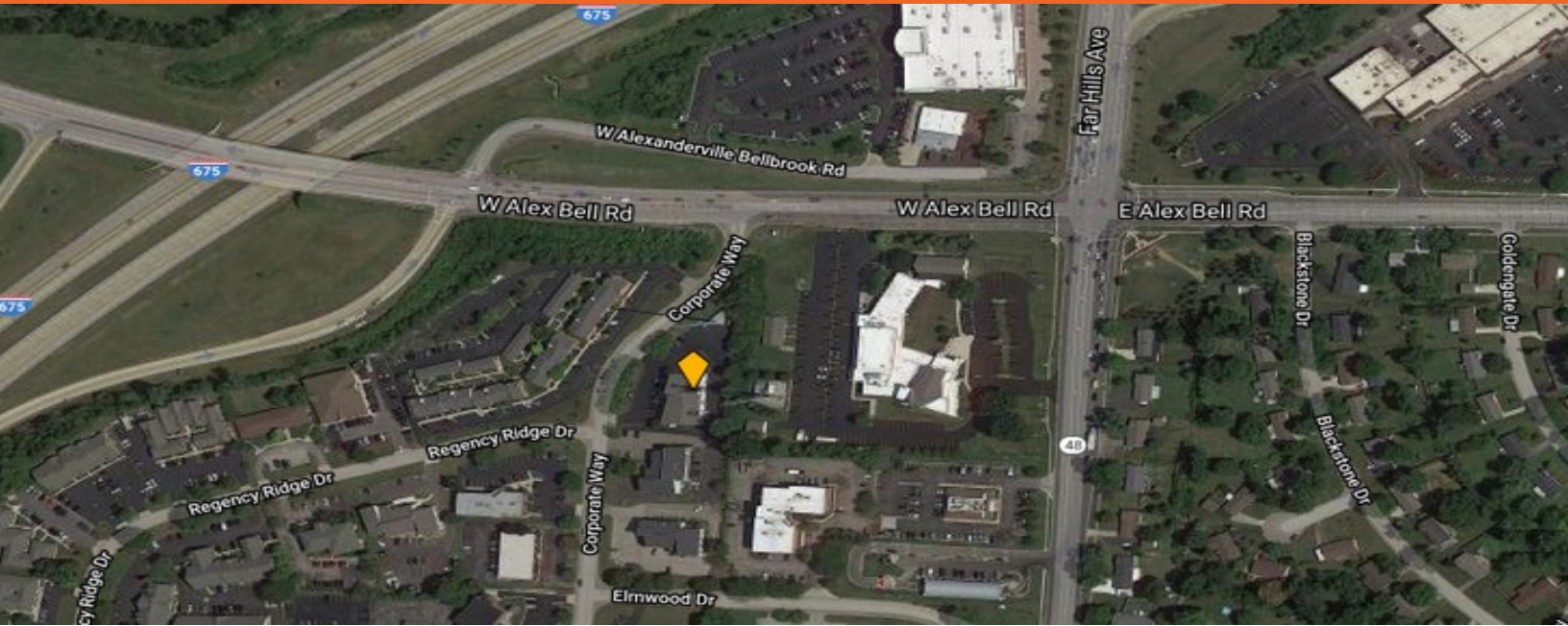
The information contained herein has been obtained from the property owner or other sources that we deem reliable. Although we have no reason to doubt its accuracy, no representation or warranty is made regarding the information, and the property is offered "as-is". The submission may be modified or withdrawn at any time by the property owner.

# 7016 CORPORATE WAY

Washington Township, OH 45459

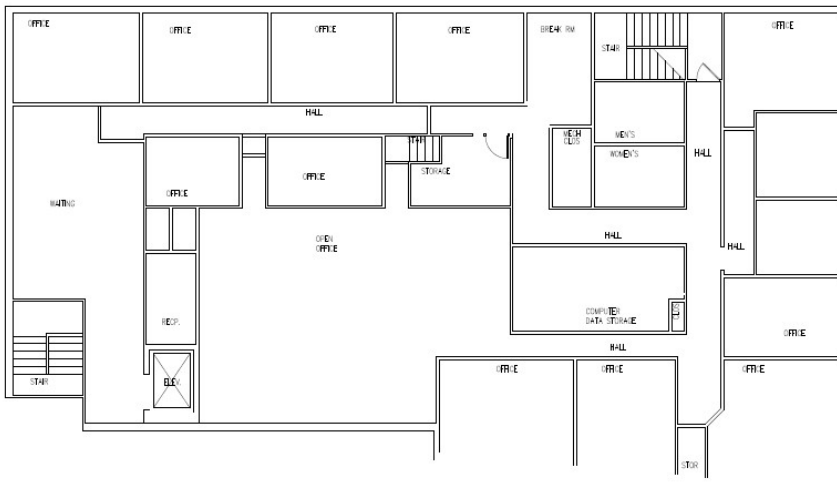
# FOR LEASE

\$ 14.95/SF FSG



## DEMOGRAPHICS

	1 MILE	3 MILES	5 MILES
<b>2019 Total Population</b>	7,660	63,360	157,260
<b>2019 Estimated Household Income</b>	\$64,727	\$70,395	\$68,401



The information contained herein has been obtained from the property owner or other sources that we deem reliable. Although we have no reason to doubt its accuracy, no representation or warranty is made regarding the information, and the property is offered "as-is". The submission may be modified or withdrawn at any time by the property owner.

# 7016 CORPORATE WAY

Wahington Township, OH 45459

# FOR LEASE

\$ 14.95/SF FSG



The information contained herein has been obtained from the property owner or other sources that we deem reliable. Although we have no reason to doubt its accuracy, no representation or warranty is made regarding the information, and the property is offered "as-is". The submission may be modified or withdrawn at any time by the property owner.

# 7016 CORPORATE WAY

Washington Township, OH 45459

# FOR LEASE

\$ 14.95/SF FSG



**HRI**  
Commercial Realty

The information contained herein has been obtained from the property owner or other sources that we deem reliable. Although we have no reason to doubt its accuracy, no representation or warranty is made regarding the information, and the property is offered "as-is". The submission may be modified or withdrawn at any time by the property owner.