

Built Out Medical Space

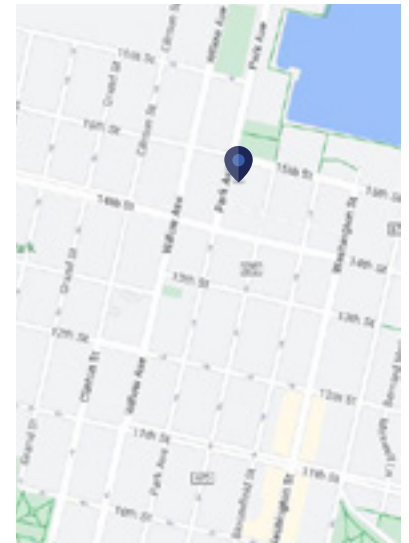
1450 Garden St
Hoboken, New Jersey

Space Profile:

Premises	Ground Floor
RSF	6,415 RSF
Rental Rate	Negotiable
Availability	Immediate
Term	Through 5/31/2032
Submarket	Hudson Waterfront
Built	2015

Features:

- Reception
- 2 Large waiting areas
- 8 ADA bathrooms
- 12 Exam rooms
- 2 Ultra sound exam / procedure rooms
- 2 Lab rooms
- 3 Offices
- Open work room
- Staff lounge
- Visible signage



Contact:



Jonathan Marks
845.558.4575
jmarks@cresa.com



Dennis Gralla
201.960.1164
dgralla@cresa.com



1450 Garden St
Hoboken, New Jersey

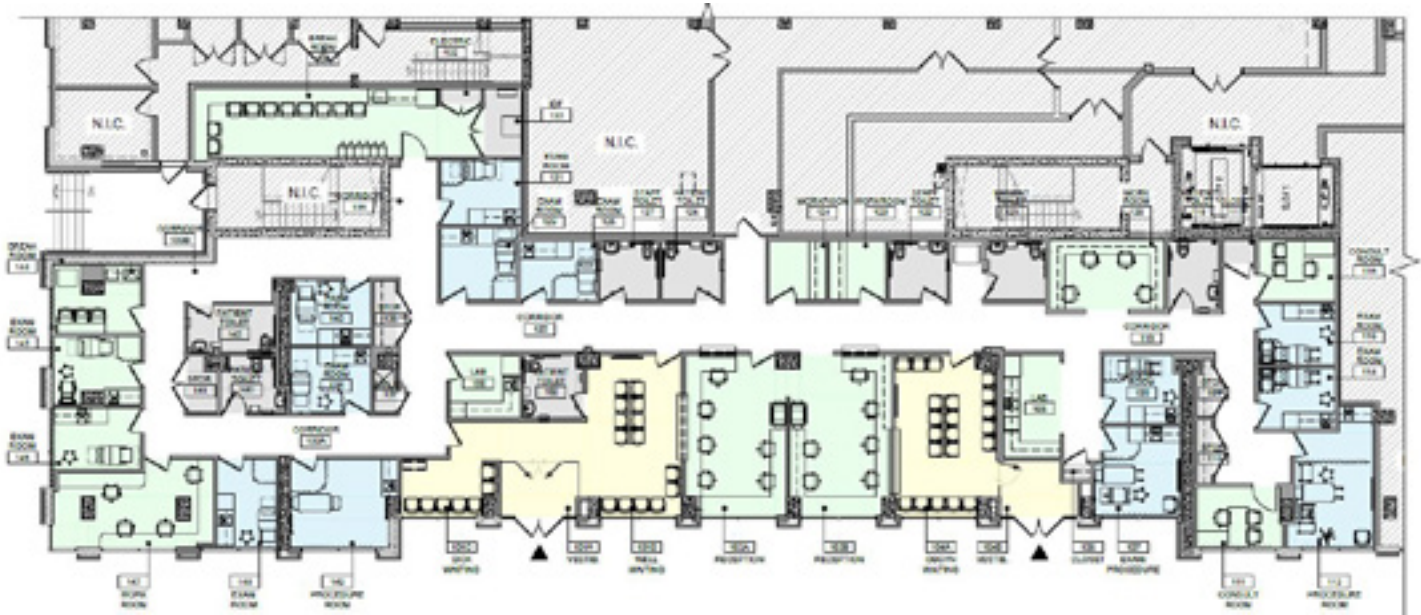


cresa ::::

Cresa © 2023. All rights reserved. The information contained in this document has been obtained from sources believed reliable. While Cresa does not doubt its accuracy, Cresa has not verified it and makes no guarantee, warranty, or representation about it. It is your responsibility to independently confirm its accuracy and completeness. Any projections, opinions, assumptions or estimates used are for example only and do not represent the current or future performance of the property. The value of this transaction to you depends on tax and other factors which should be evaluated by your tax, financial and legal advisors. You and your advisors should conduct a careful, independent investigation of the property to determine to your satisfaction the suitability of the property for your needs.

1450 Garden St

Floor Plans



Cresa © 2023. All rights reserved. The information contained in this document has been obtained from sources believed reliable. While Cresa does not doubt its accuracy, Cresa has not verified it and makes no guarantee, warranty, or representation about it. It is your responsibility to independently confirm its accuracy and completeness. Any projections, opinions, assumptions or estimates used are for example only and do not represent the current or future performance of the property. The value of this transaction to you depends on tax and other factors which should be evaluated by your tax, financial and legal advisors. You and your advisors should conduct a careful, independent investigation of the property to determine to your satisfaction the suitability of the property for your needs.