



FOR LEASE

10127 Marine City HWY
Ira Township, MI 48023

1.05 Acres



10127 Marine City HWY
Ira Township, MI 48023

Property Highlights

- Monument signage available
- Private suite entrances
- Excellent visibility and prominence along Marine City Highway
- Ample Parking
- Medical/office- former ophthalmology center and dental practice
- Move-in-ready suites
- 10,000 Total SF



FOR LEASE
\$19.50 NNN

For more information, please contact:

RYDER PATTERSON
(248) 877-4971
rpatterson@crabillco.com

BRIAN CRAWFORD
(248) 561-9586
crawford@crabillco.com

CRABILL & COMPANY
(734) 261-8200
33640 Schoolcraft Rd.
Livonia, MI 48150



**10127 Marine City HWY
Ira Township, MI 48023**

**For Lease
\$19.50 NNN**



Marine City Hwy

Marine City Hwy

**Two Parcels
Totaling 3.88 Acres**

**A
1.05 Acres**

**B
2.83 Acres**

For more information, please contact:

RYDER PATTERSON
(248) 877-4971
rpatterson@crabillco.com

BRIAN CRAWFORD
(248) 561-9586
crawford@crabillco.com

CRABILL & COMPANY
(734) 261-8200
33640 Schoolcraft Rd.
Livonia, MI 48150



10127 Marine City HWY
Ira Township, MI 48023

For Lease
\$19.50 NNN



Suite 100 (3,860 sf)
Suite 300 (2,460 sf)



For more information, please contact:

RYDER PATTERSON
(248) 877-4971
rpatterson@crabillco.com

BRIAN CRAWFORD
(248) 561-9586
crawford@crabillco.com

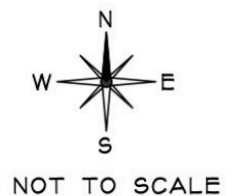
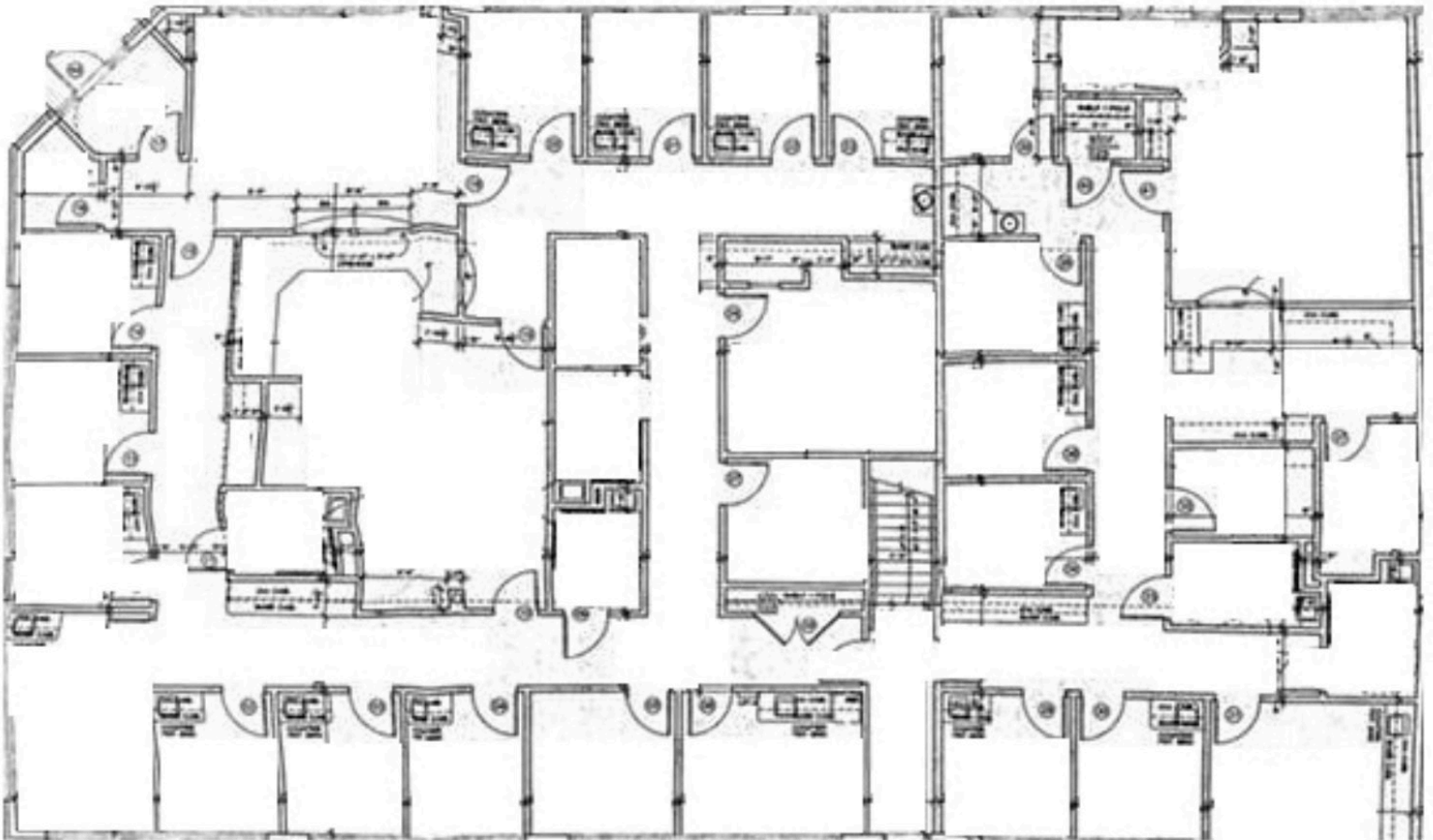
CRABILL & COMPANY
(734) 261-8200
33640 Schoolcraft Rd.
Livonia, MI 48150



**10127 Marine City HWY
Ira Township, MI 48023**

**For Lease
\$19.50 NNN**

Suite 100(3,860 sf)



For more information, please contact:

RYDER PATTERSON
(248) 877-4971
rpatterson@crabillco.com

BRIAN CRAWFORD
(248) 561-9586
crawford@crabillco.com

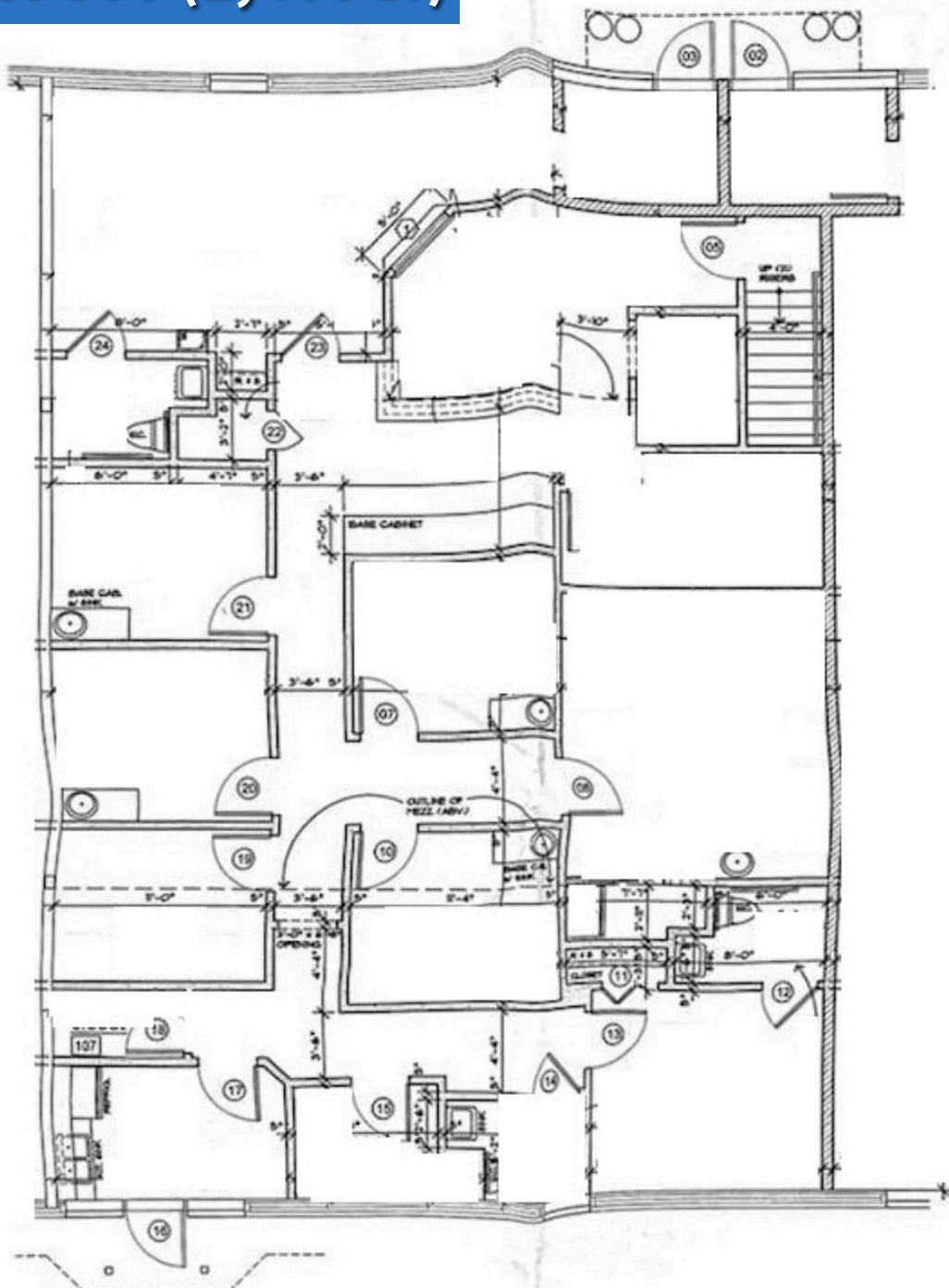
CRABILL & COMPANY
(734) 261-8200
33640 Schoolcraft Rd.
Livonia, MI 48150



10127 Marine City HWY
Ira Township, MI 48023

For Lease
\$19.50 NNN

Suite 300 (2,460 sf)



NOT TO SCALE

For more information, please contact:

RYDER PATTERSON
(248) 877-4971
rpatterson@crabillco.com

BRIAN CRAWFORD
(248) 561-9586
crawford@crabillco.com

CRABILL & COMPANY
(734) 261-8200
33640 Schoolcraft Rd.
Livonia, MI 48150