

# CYPRESS RIDGE OFFICE

295 Patterson Road | Haines City, FL 33844  
Turnkey Office For Lease



LQ Commercial  
REAL ESTATE SERVICES

LQCRE.COM



CALL FOR  
RATES

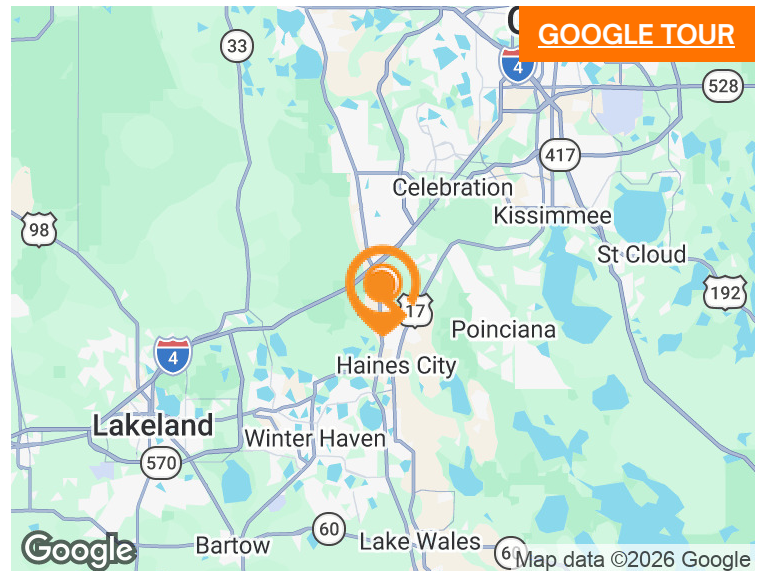


3,863 SF  
SIZE



9,148 SF  
RBA

- 3,863 SF Turnkey Office Space For Lease
- Suite #101 includes:
  - 3,863 SF
  - Reception area
  - Conference room
  - 8 offices
- 10 minutes from Interstate 4
- Close proximity to Heart of Florida Regional Medical Center



[PROPERTIES.LQCRE.COM/CYPRESS-RIDGE-OFFICE](https://PROPERTIES.LQCRE.COM/CYPRESS-RIDGE-OFFICE)



TOTAL POPULATION  
**90,402**



5-YR POP. INCREASE  
**3.8%**



AVERAGE HH INCOME  
**\$90,440**

 **LQ Commercial**  
REAL ESTATE SERVICES  
500 Winderley Pl #104  
Maitland, FL 32751  
[LQCRE.COM](https://LQCRE.COM)

**Julia Sosa**  
Founding Principal - Orlando  
D: 407.775.4358  
C: 407.257.8246  
[jsosa@lqcre.com](mailto:jsosa@lqcre.com)

**Eva Royal**  
Principal, Senior Associate  
D: 407.705.2217  
C: 407.421.3532  
[eroyal@lqcre.com](mailto:eroyal@lqcre.com)

# CYPRESS RIDGE OFFICE

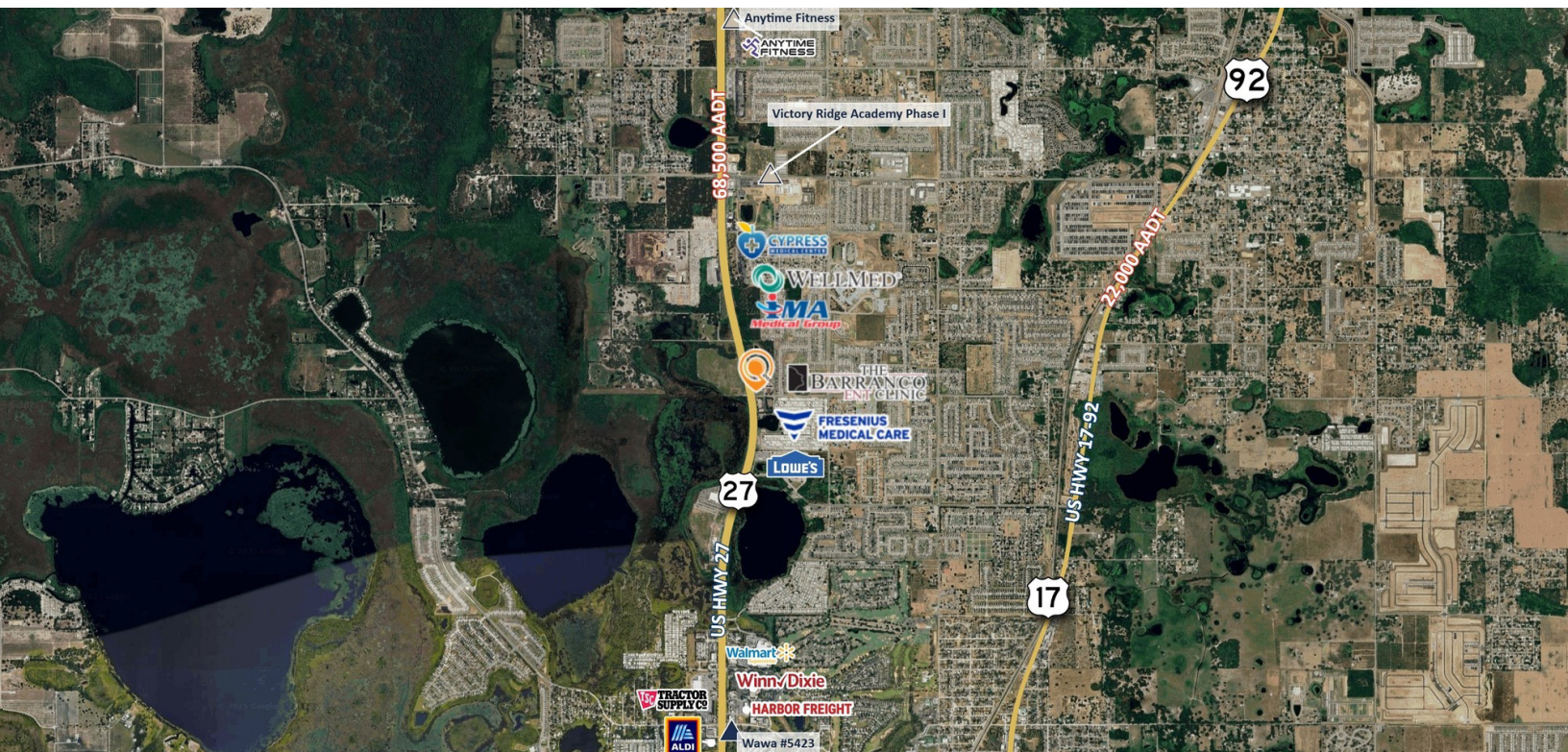
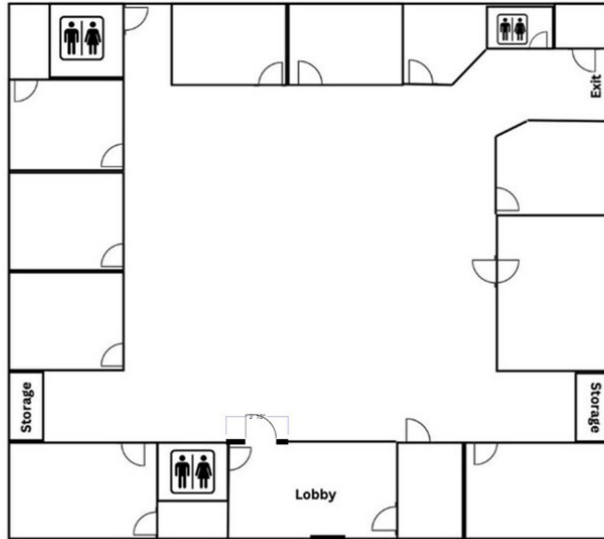
295 Patterson Road | Haines City, FL 33844  
Turnkey Office For Lease



LQ Commercial  
REAL ESTATE SERVICES

LQCRE.COM

## SUITE #101 FLOOR PLAN 3,863 SF



 **LQ Commercial**  
REAL ESTATE SERVICES  
500 Winderley Pl #104  
Maitland, FL 32751  
LQCRE.COM

**Julia Sosa**  
Founding Principal - Orlando  
D: 407.775.4358  
C: 407.257.8246  
jsosa@lqcre.com

**Eva Royal**  
Principal, Senior Associate  
D: 407.705.2217  
C: 407.421.3532  
eroyal@lqcre.com