

# 684 W. Boughton Road Bolingbrook, Illinois



Class B  
Office Building  
for Lease



Christine Simek  
630.473.5070  
[christine@xroadsadvisors.com](mailto:christine@xroadsadvisors.com)

## Introduction

Bolingbrook is the second-most populated suburb of Chicago with more than 70,000 residents and is located within the South Suburban submarket. The property features a two-story building ideally positioned near major transportation routes, including I-55, I-355, and Route 53, offering excellent accessibility. The area is further strengthened by a robust business environment, as Bolingbrook is home to 24 corporate headquarters and over 13 million square feet of industrial space, drawing a steady flow of customers and clients to the surrounding community.

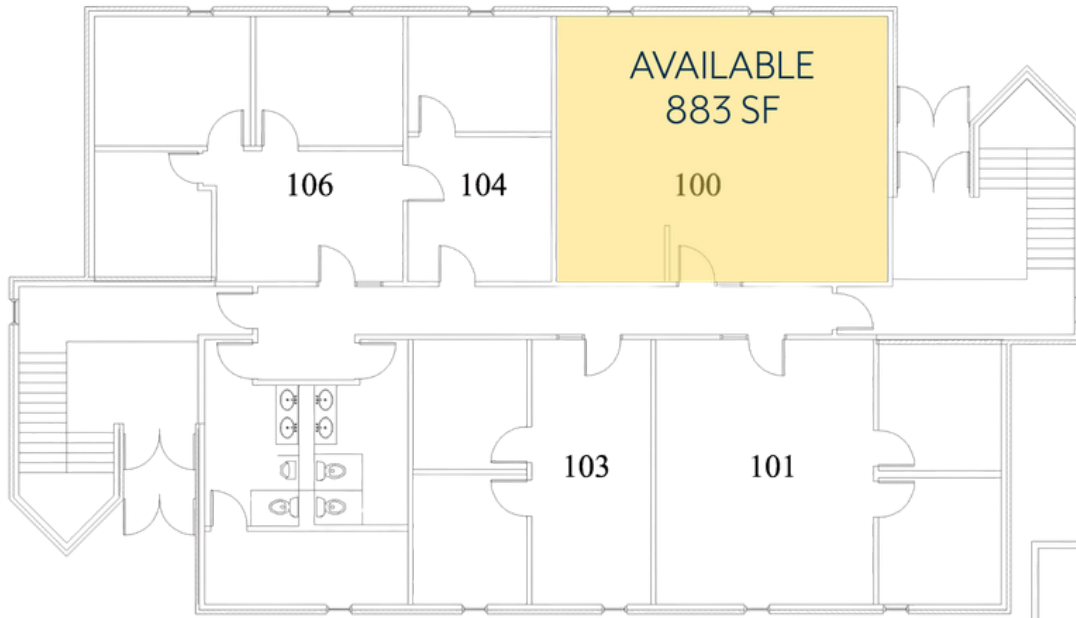
## Building Features

- Available Suites:
  - Suite 100 - 883 SF - Available July 1, 2026
  - Suite 200B - 692 SF - Available NOW
- Monument and directory signage
- On site mailboxes
- 24 hour access
- Parking Ratio: 4.29/1,000 SF
- 30 surface parking spaces

# Photos

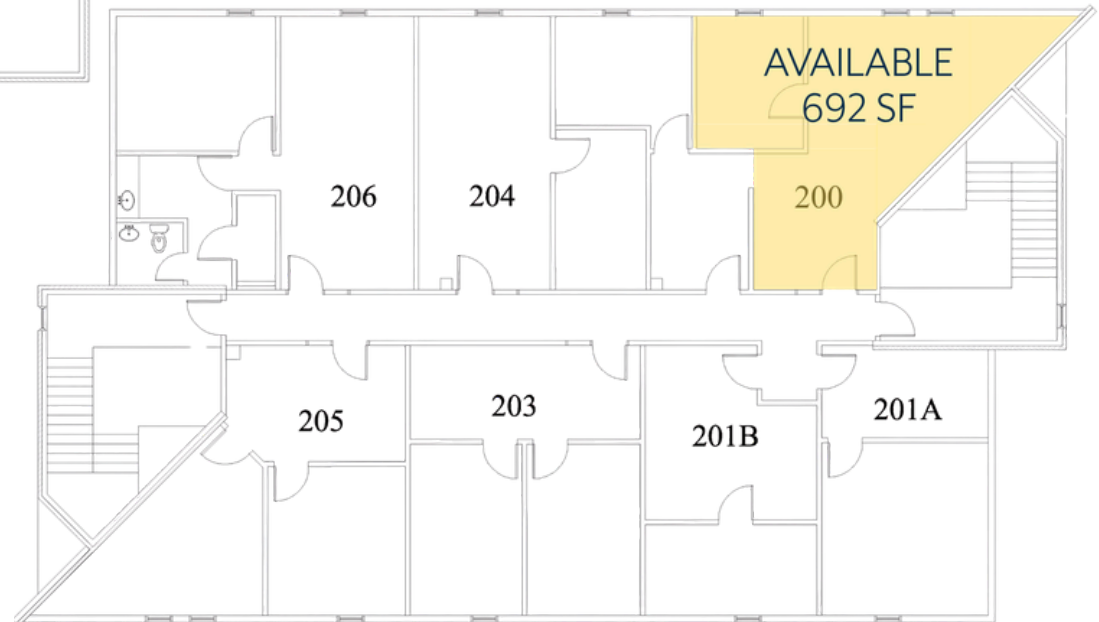


# Available Spaces:



1st Floor Overall Plan

Scale = 1/4" = 1'-0"

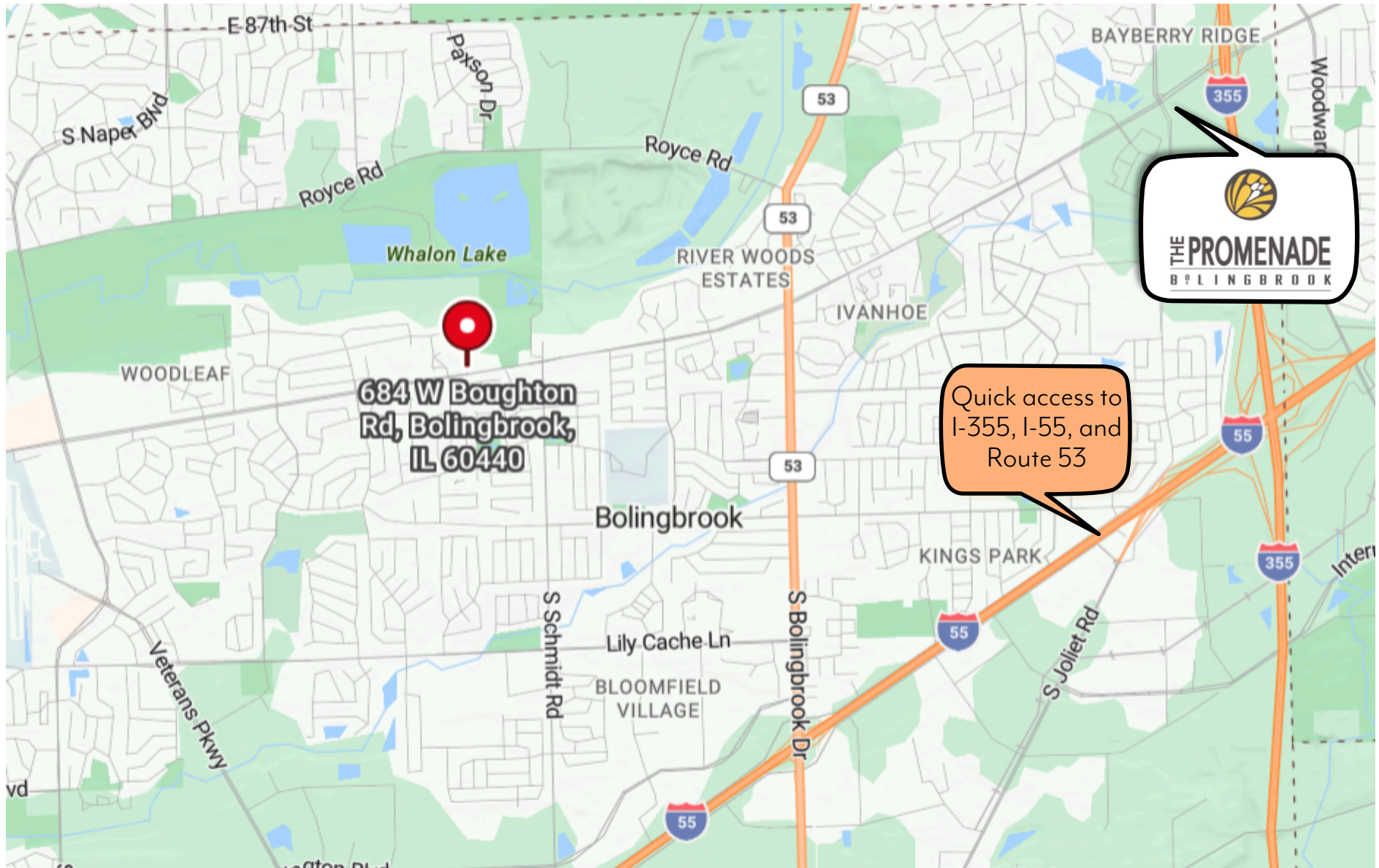


Second Floor Overall Plan

Scale = 1/4" = 1'-0"



# Location



# 684 Boughton Bolingbrook, Illinois



Christine Simek  
630.473.5070

[christine@xroadsadvisors.com](mailto:christine@xroadsadvisors.com)