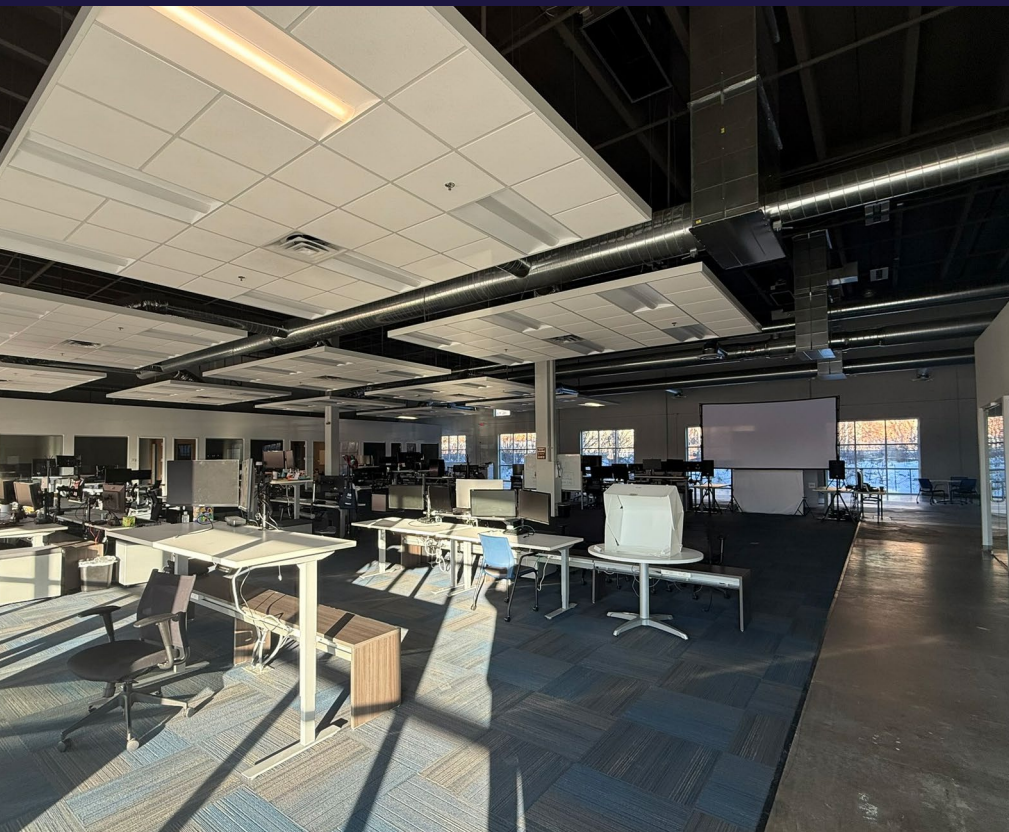


14,568 SF
SUBLEASE
AVAILABLE



5320 W 23RD ST
SUITE 140
ST. LOUIS PARK, MN 55416





SPACE HIGHLIGHTS

SPACE ADDRESS: Westside Center
5320 W 23RD ST
SUITE 140
ST. LOUIS PARK

TOTAL AVAILABLE SF: 14,568 SF

SUBLEASE TERM: THRU JAN 31, 2031

ASKING RENT: NEGOTIABLE

SPACE NOTES:

- NEW TO MARKET WEST END SUBLEASE
- PLUG-N-PLAY - FURNITURE AVAILABLE
- DEDICATED CLIENT / EMPLOYEE PARKING
- LARGE GARAGE DOOR WINDOWS
- EXPOSED CEILING AND POLISHED CONCRETE FLOORS

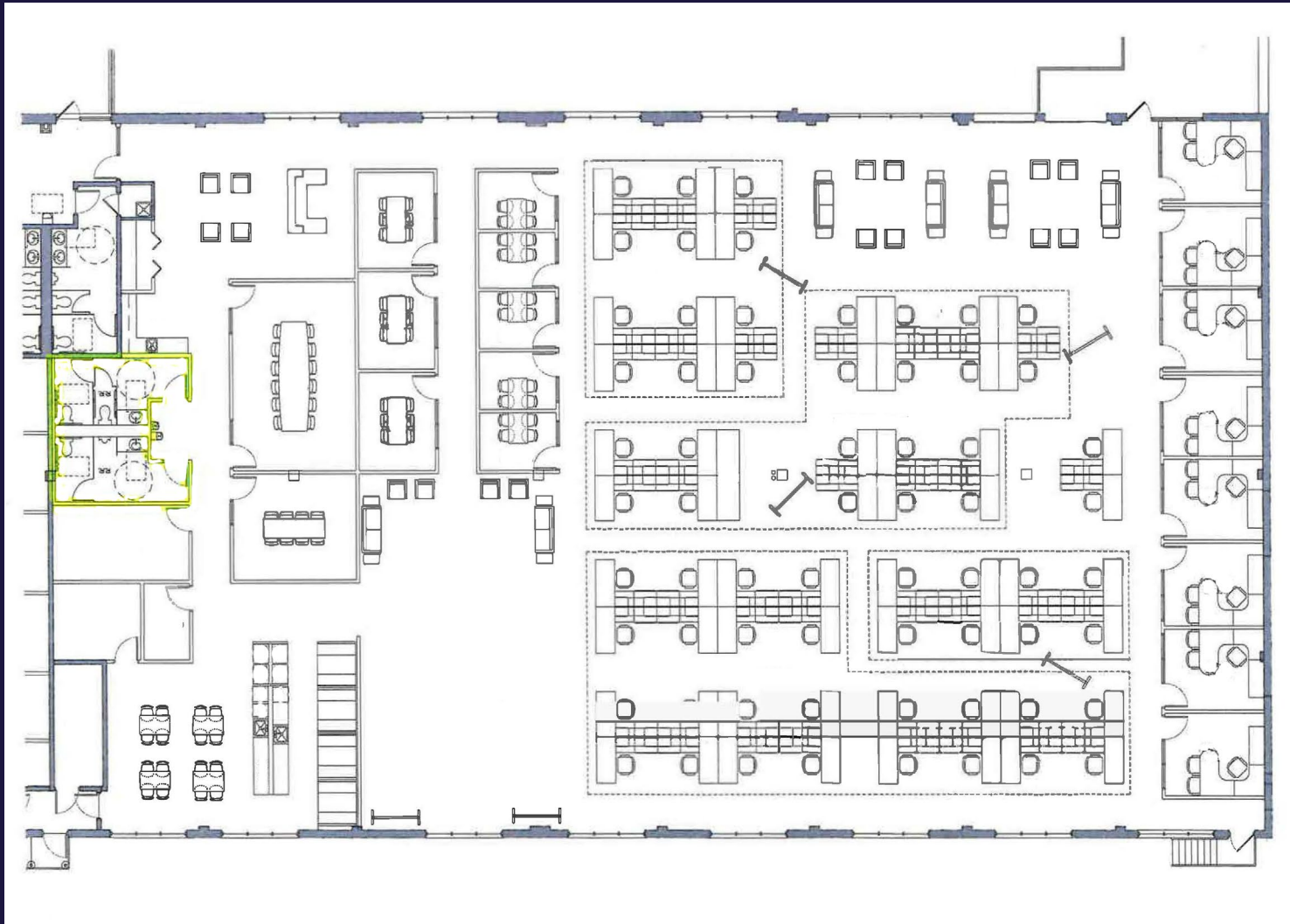


FLOORPLAN

5320 W 23RD ST, SUITE 140

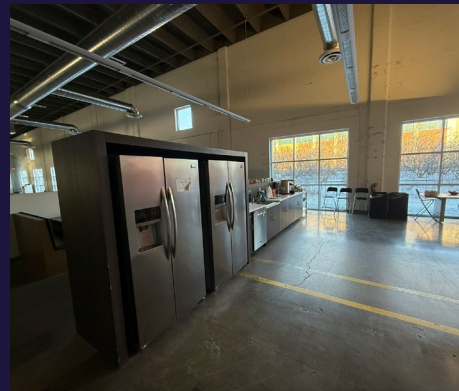
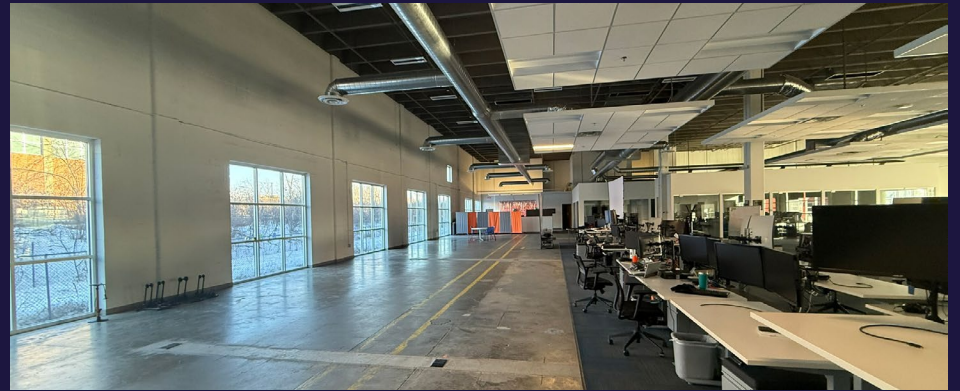
ST. LOUIS PARK

TOTAL AVAILABLE SF: 14,568 SF



SPACE CONTAINS:

- 8 PRIVATE OFFICES
- 10 MEETING ROOMS
- KITCHENETTE
- 64 CUBICLES





BUILDING HIGHLIGHTS

SPACE ADDRESS: Westside Center
5320 W 23RD ST
ST. LOUIS PARK

TOTAL BUILDING SF: 197,258 SF

YEAR BUILT: 1981

YEAR RENOVATED: 2016

PARKING RATIO: 4.01/1,000

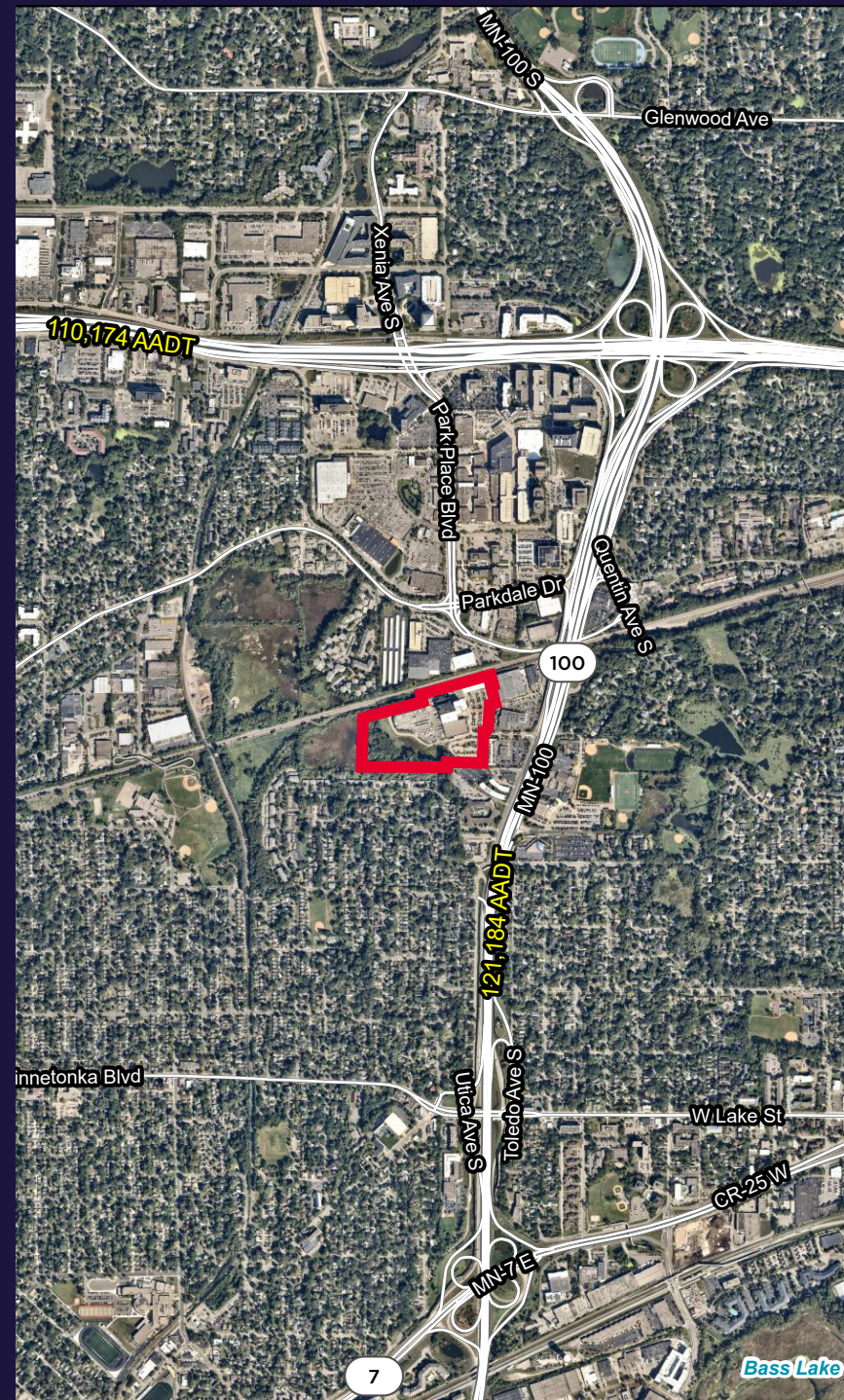


BUILDING AMENITIES:

- FITNESS CENTER WITH SHOWER ROOMS
- OUTDOOR PATIO
- INDOOR BIKE STORAGE
- LARGE GARAGE DOOR WINDOWS



LOCATION



Please contact us for more information:

JOHN MCKENNA

DIRECTOR

+1 218 390 3313

john.mckenna@cushwake.com



©2026 Cushman & Wakefield. All rights reserved. The information contained in this communication is strictly confidential. This information has been obtained from sources believed to be reliable but has not been verified. NO WARRANTY OR REPRESENTATION, EXPRESS OR IMPLIED, IS MADE AS TO THE CONDITION OF THE PROPERTY (OR PROPERTIES) REFERENCED HEREIN OR AS TO THE ACCURACY OR COMPLETENESS OF THE INFORMATION CONTAINED HEREIN, AND SAME IS SUBMITTED SUBJECT TO ERRORS, OMISSIONS, CHANGE OF PRICE, RENTAL OR OTHER CONDITIONS, WITHDRAWAL WITHOUT NOTICE, AND TO ANY SPECIAL LISTING CONDITIONS IMPOSED BY THE PROPERTY OWNER(S). ANY PROJECTIONS, OPINIONS OR ESTIMATES ARE SUBJECT TO UNCERTAINTY AND DO NOT SIGNIFY CURRENT OR FUTURE PROPERTY PERFORMANCE.

