

# Hayes Center Shoppes

Prime Location Retail Center in Shelby Twp., MI



## General Information:

45617-45721 Hayes Road Shelby Twp, MI 48315

*(1/2 Mile North of Hall Rd. on Westside of Hayes Rd.)*

Commercial Real Estate Services

Property Management

Brokerage

51863 Schoenherr Road  
Suite 102, Shelby Township,  
MI 48315

Phone: 586-228-2232

Email:

Larry@hrgproperty.com

Jordan@hrgproperty.com

- Total Structure Size: 47,234 Square Feet
- 2,209 FT space available.
- Great Location / High Visibility just north of M59 in Shelby Township
- Generous # of Parking Spaces
- HIGH Traffic Volumes
- Come join tenants such as Sweetwater Café, Jams Brunch, Great Clips, Sherwood Brewery, Michigan by the Bottle, & more.

WEBSITE : [www.HRGproperty.com](http://www.HRGproperty.com)

# LEASE PLAN-OVERVIEW



Commercial Real Estate Services

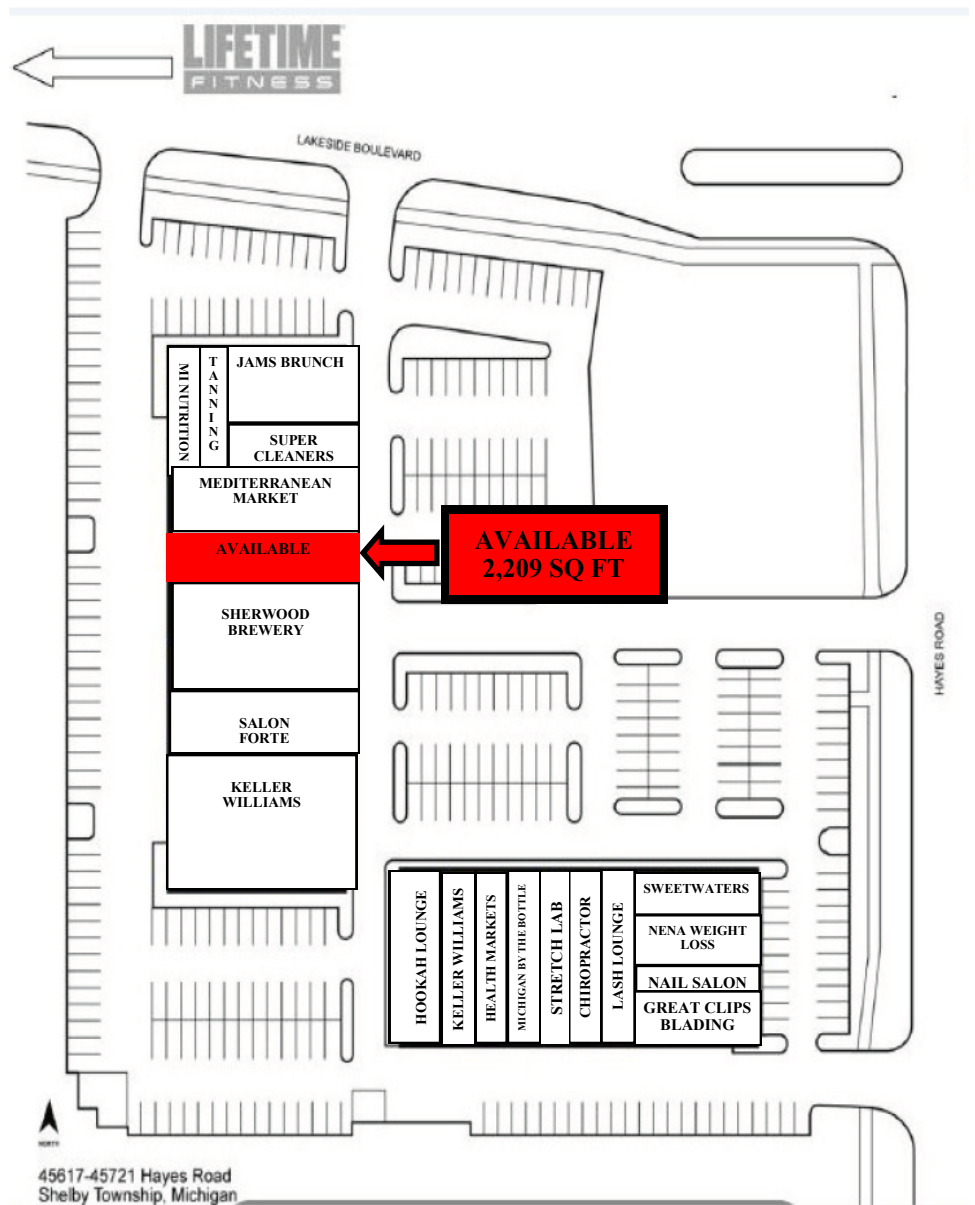
Property Management

Brokerage

51863 Schoenherr Road  
Suite 102, Shelby Township,  
MI 48315

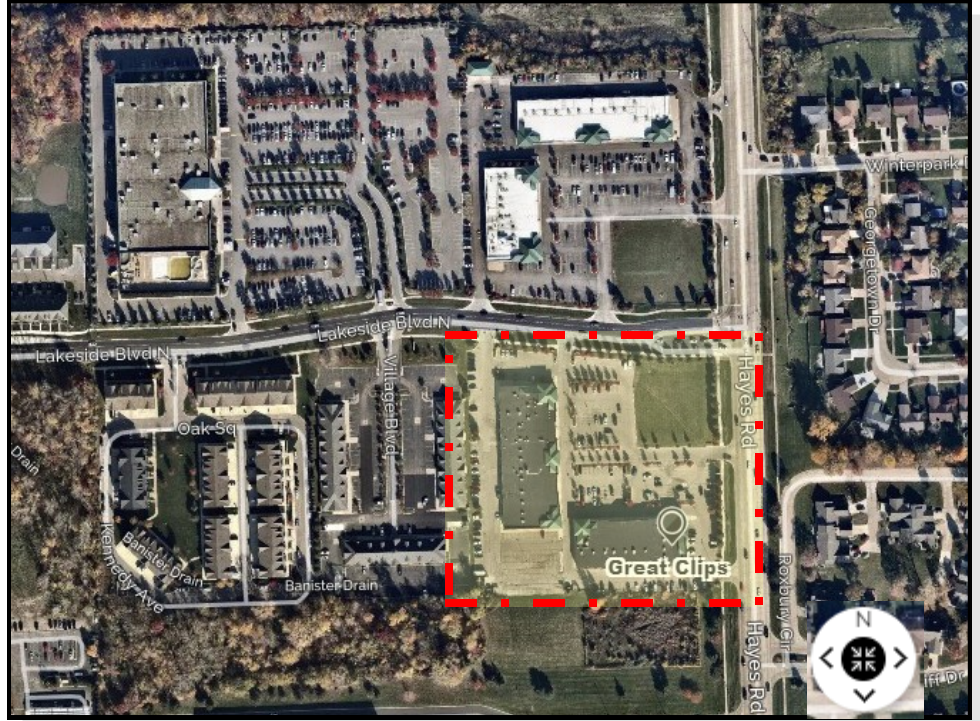
Phone: 586-228-2232

Email:  
Larry@hrgproperty.com  
Jordan@hrgproperty.com



WEBSITE : [www.HRGproperty.com](http://www.HRGproperty.com)

# MAPS



Commercial Real Estate Services

Property Management

Brokerage

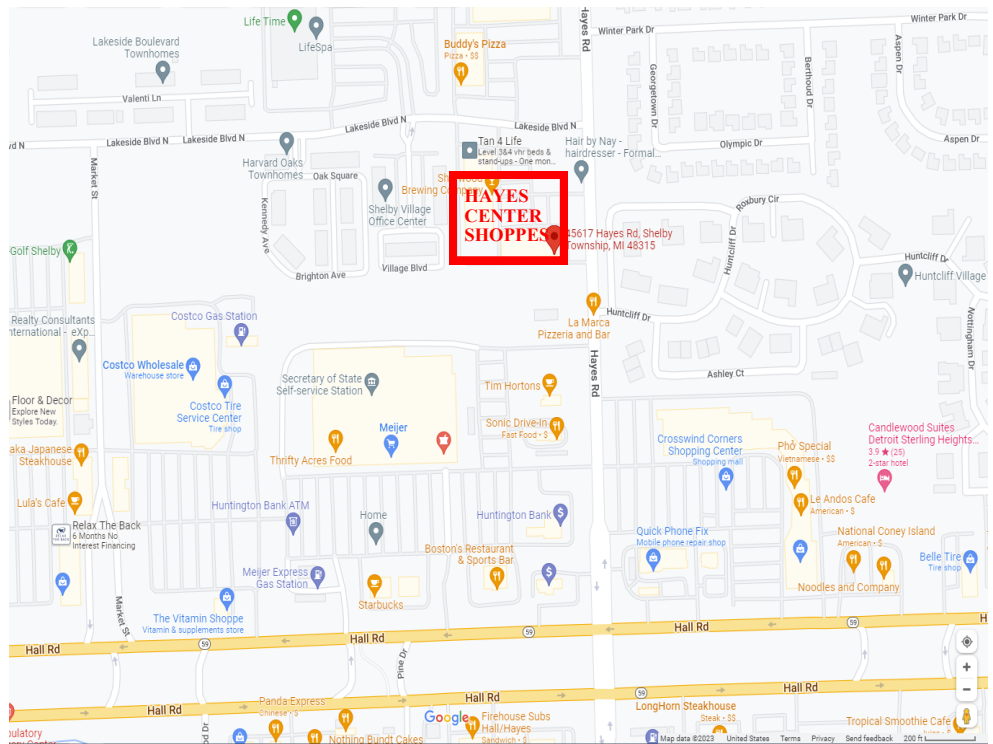
51863 Schoenherr Road  
Suite 102, Shelby Township,  
MI 48315

Phone: 586-228-2232

Email:

Larry@hrgproperty.com

Jordan@hrgproperty.com



WEBSITE : [www.HRGproperty.com](http://www.HRGproperty.com)