

FOR LEASE

NEWMARK

MOUNTAIN WEST

CHET BARBER
cbarber@newmarkmw.com
direct 385.247.4641
[View Profile](#)

5049 SOUTH 2700 WEST



PROPERTY DETAILS

5049 S 2700 W, Roy, UT 84067

- 11,888 SF Office Warehouse For Lease
- Central Weber County Location
- Easy access to I-15
- Approximately 1,000 SF Office
- Kitchen and Break Room
- 2 Grade Level Doors

SURROUNDING TENANTS



2025 DEMOS



EST. POPULATION

1 MILE » 14,459
3 MILE » 86,567
5 MILE » 179,991



EST. HOUSEHOLDS

1 MILE » 4,847
3 MILE » 29,385
5 MILE » 60,819



EST. AVERAGE HH INCOME

1 MILE » \$111,926
3 MILE » \$114,982
5 MILE » \$116,140

FULL SERVICE
COMMERCIAL REAL ESTATE
312 East South Temple
Salt Lake City, Utah 84111
Office 801.456.8800
www.newmarkmw.com



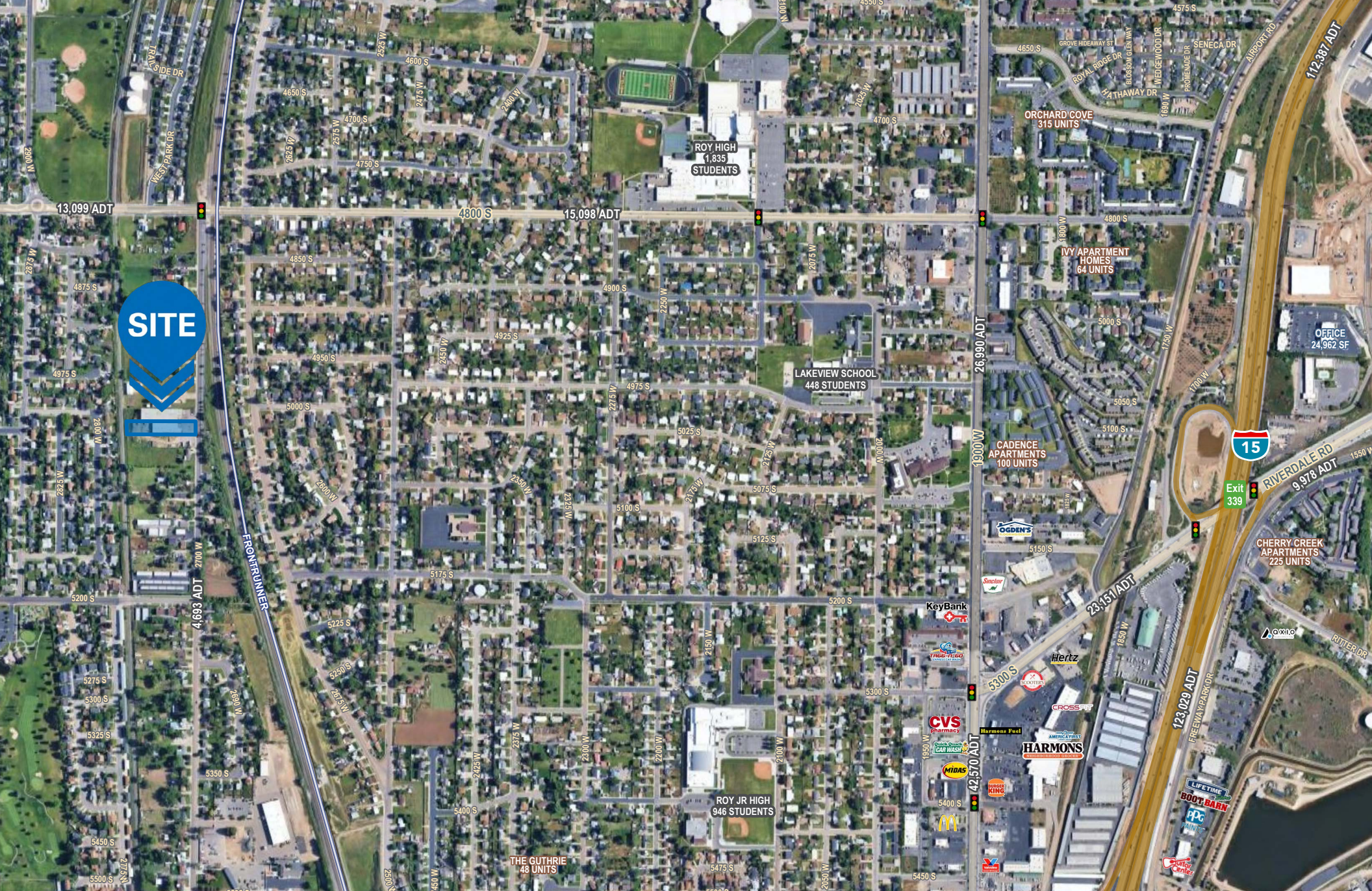
NEWMARK

 MOUNTAIN WEST

CHET BARBER
cbarber@newmarkmw.com
direct 385.247.4641
[View Profile](#)

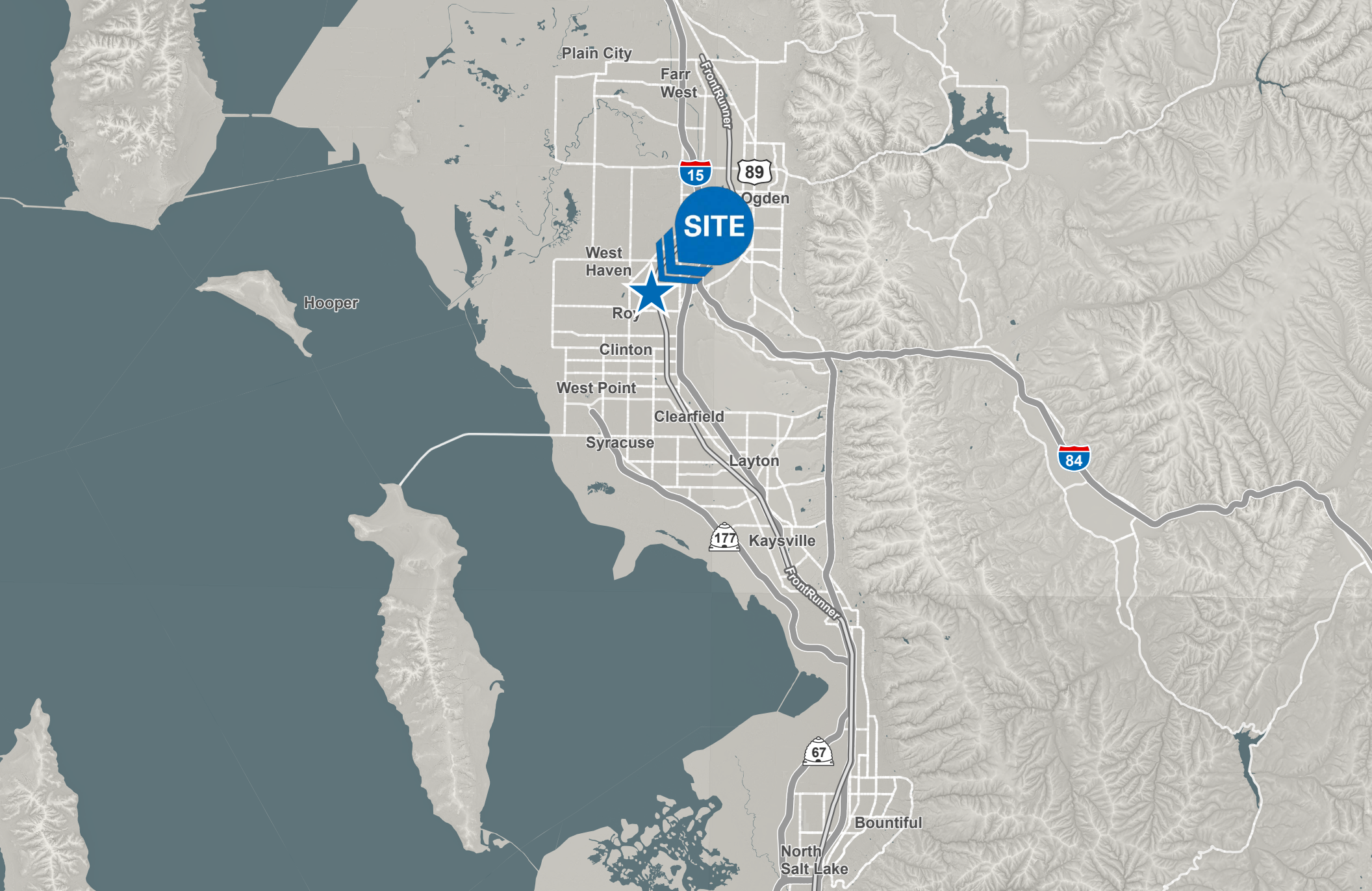


**FULL SERVICE
COMMERCIAL REAL ESTATE**
312 East South Temple
Salt Lake City, Utah 84111
Office 801.456.8800
www.newmarkmw.com



CHET BARBER
 cbarber@newmarkmw.com
 direct 385.247.4641
[View Profile](#)

**FULL SERVICE
 COMMERCIAL REAL ESTATE**
 312 East South Temple
 Salt Lake City, Utah 84111
 Office 801.456.8800
www.newmarkmw.com



NEWMARK

MOUNTAIN WEST

CHET BARBER

cbarber@newmarkmw.com

direct 385.247.4641

[View Profile](#)

**FULL SERVICE
COMMERCIAL REAL ESTATE**

312 East South Temple

Salt Lake City, Utah 84111

Office 801.456.8800

www.newmarkmw.com