



14001 RIDGEDALE DRIVE

14001 Ridgedale Drive ✦ Minnetonka, MN 55305



- ✦ 26,885 SF three-story Medical Office Building
- ✦ Available Space: Suite 390 3,587 RSF
- ✦ Net Rental Rate: Negotiable
- ✦ 2023 Ops/Taxes: \$18.27 per RSF
- ✦ Close proximity to many hotels, restaurants and Ridgedale Mall
- ✦ Join OB/GYN West, Wayzata Children's Clinic, Lakes Dermatology
- ✦ Executive Parking

FOR LEASE

JASON A. BUTTERFIELD

(952) 460-9830

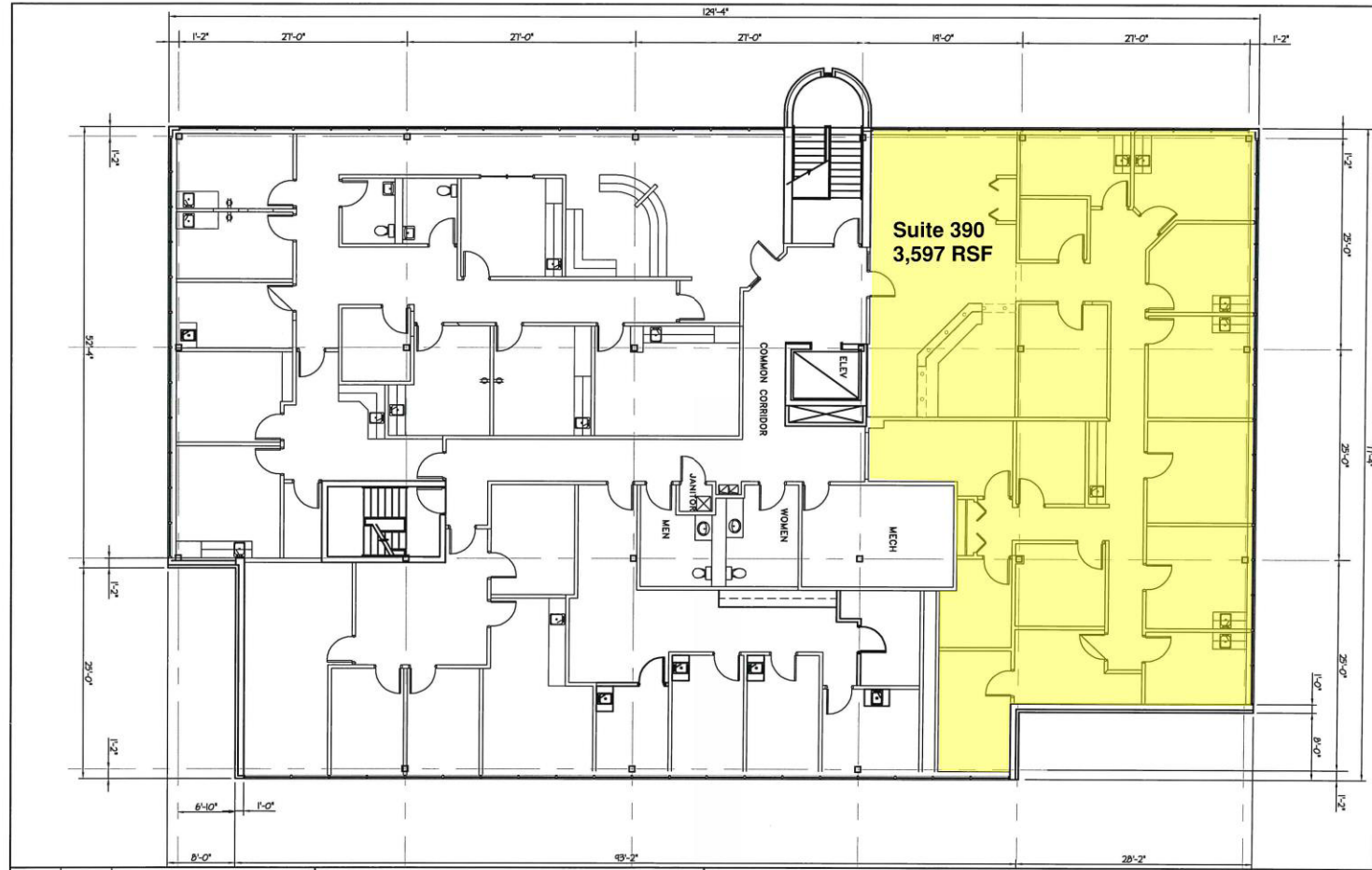
jason.butterfield@frauenshuh.com



FRAUENSHUH

COMMERCIAL REAL ESTATE

14001 RIDGEDALE DRIVE ♦ FOR LEASE
14001 Ridgedale Drive ♦ Minnetonka, MN 55305



JASON A. BUTTERFIELD
(952)460-9830
jason.butterfield@frauenshuh.com