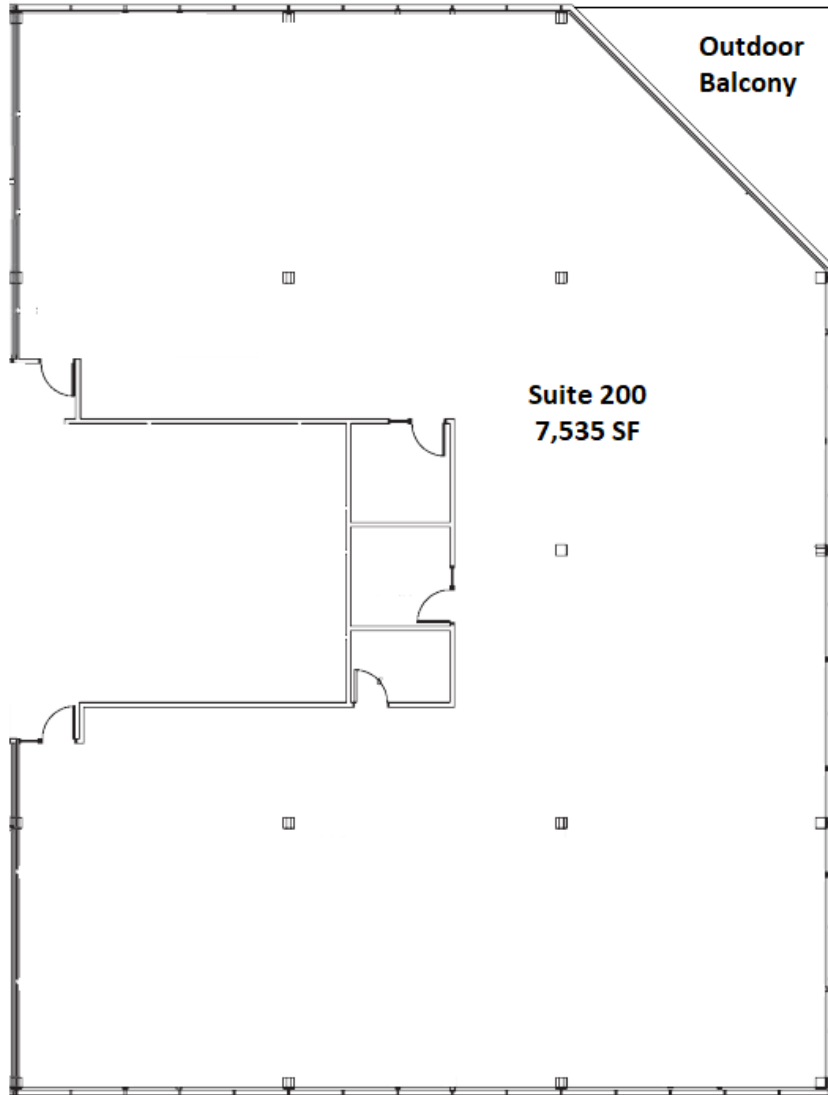


SUITE 200 | 7,535 SF

950 WARRENVILLE RD \ LISLE,IL



SPACE NOTES

- New Ownership and Management
- Up to 42,064 SF available for lease
- Building and Monument Signage Available
- Ready to go Office Spaces with New LED Lights
- Furniture available in select suites



RYAN MOEN

630.480.6346

RMoen@VersaRES.com

JOHN MILLNER

630.480.6342

JMillner@VersaRES.com

**1 MID AMERICA PLAZA, 3RD FLOOR
OAKBROOK TERRACE, IL 60181
630.480.6413**

EXCLUSIVELY LISTED BY

VERSA
REAL ESTATE SERVICES