



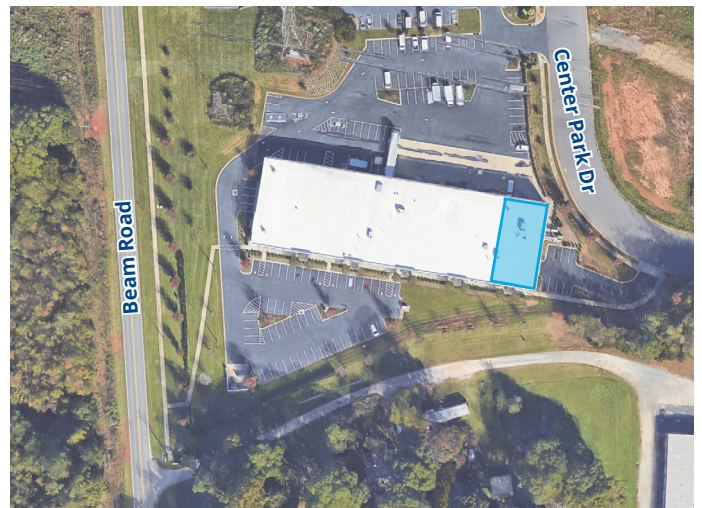
100% OFFICE



± 3,000 SF Office Space For Lease

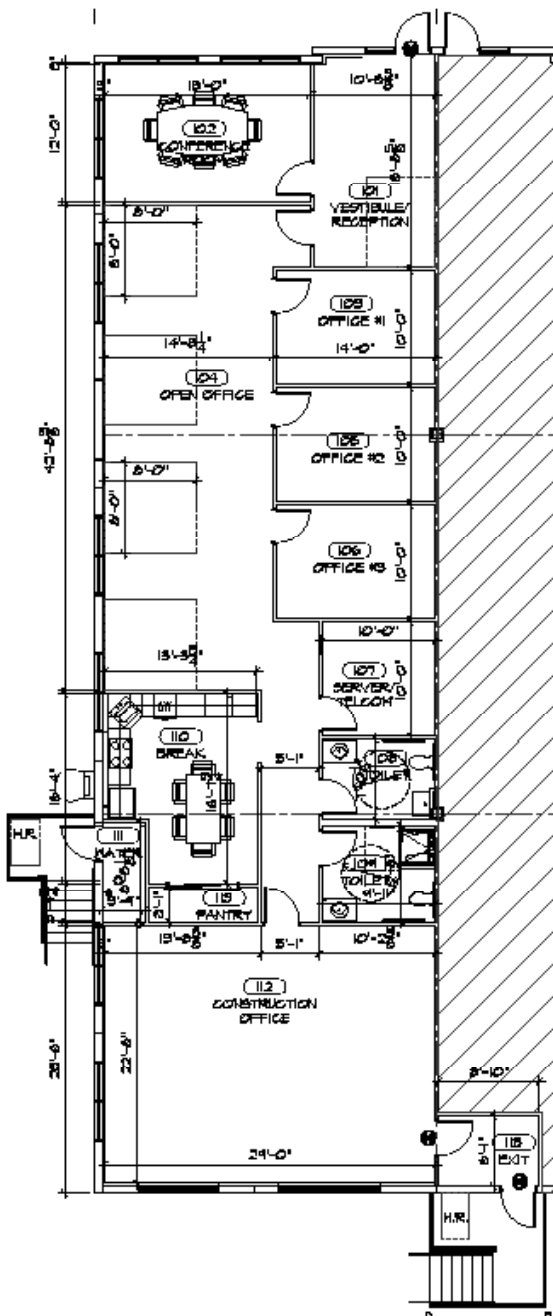
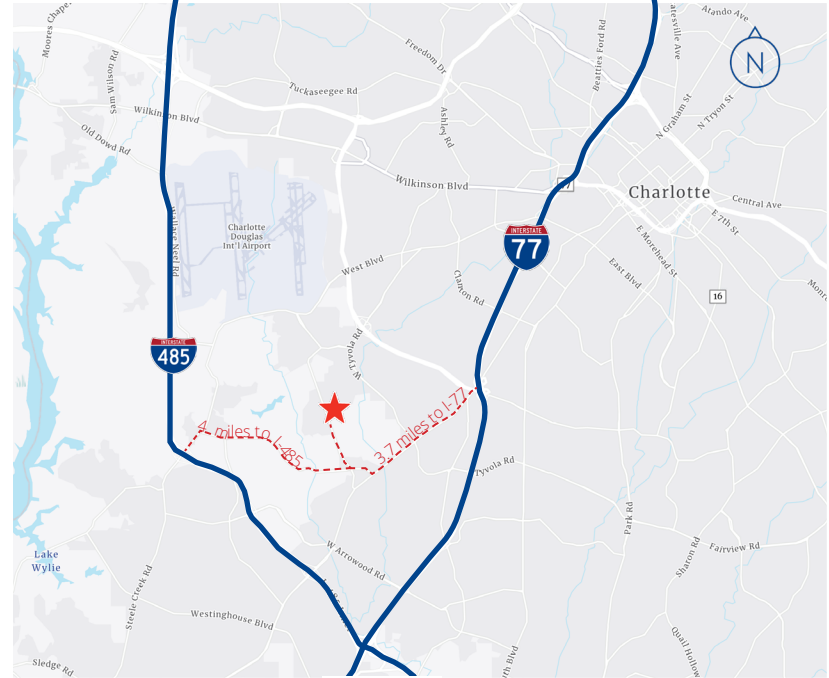
1110 Center Park Drive | Suite K
Charlotte, NC 28217

Located in Charlotte's southwest submarket, Coffey Creek Business Park is 3.5 miles from Charlotte Douglas International Airport Cargo Terminal, 4 miles to I-485, 3.7 miles to I-77 and 9 miles from Charlotte's Central Business District.



For Lease

Address:	1110 Center Park Drive Suite K Charlotte, NC 28217
Industrial Park:	Coffey Creek Business Park
Submarket:	Southwest
Available SF:	±3,000 SF
Building Amenities:	3 Private Offices Conference Room Two Bull Pen Areas Abundant Parking Spots
Lease Rate:	Call For Pricing



Contact Us:

Justin Smith, SIOR

Senior Vice President | Charlotte
+1 704 409 2379
justin.smith@colliers.com

Greg Gosselin

Vice President | Charlotte
+1 704 409 2913
greg.gosselin@colliers.com

Phoebe Dinga

Senior Associate | Charlotte
+1 704 973 7207
phoebe.dinga@colliers.com



This document has been prepared by Colliers International for advertising and general information only. Colliers International makes no guarantees, representations or warranties of any kind, expressed or implied, regarding the information including, but not limited to, warranties of content, accuracy and reliability. Any interested party should undertake their own inquiries as to the accuracy of the information. Colliers International excludes unequivocally all inferred or implied terms, conditions and warranties arising out of this document and excludes all liability for loss and damages arising there from. This publication is the copyrighted property of Colliers International and/or its licensor(s). ©2025. All rights reserved.