



7036 S. High Tech Dr.

MIDVALE, UT 84047

For Lease

Property Highlights

- 114,364 total square feet
 - 18,371 SF office
 - 95,993 SF warehouse
- 32'x29' column spacing
- 18' clear height
- Thirteen (13) dock high loading doors (8'x9') equipped with bumpers, seals, and mechanical pit levelers.
- One (1) ground level loading door (10'x12')
- Wet sprinkling system
- Floor drains in the warehouse
- 1,600A / 277/480V / 3P
- T-5 fluorescent warehouse lighting
- Swamp coolers in the warehouse
- Lot size: 7.3 acres
- 408 auto parking stalls
- Potential for outside storage
- Zoned Regional Commercial (RC)
- Permitted uses: manufacturing, restaurant, minor transportation facility, commercial repair services
- Excellent access to I-15, State Street and 7200 South

For information, please contact:

Jeff Heaton, SIOR

Executive Managing Director

t 801-578-5539

jheaton@newmarkmw.com

Lucas M. Burbank

Executive Managing Director

t 801-578-5522

lburbank@newmarkmw.com

Eli Priest

Senior Managing Director

t 801-746-4746

epriest@newmarkmw.com

376 E. 400 S.

Suite 120

Salt Lake City, UT 84111

NEWMARK

 MOUNTAIN WEST

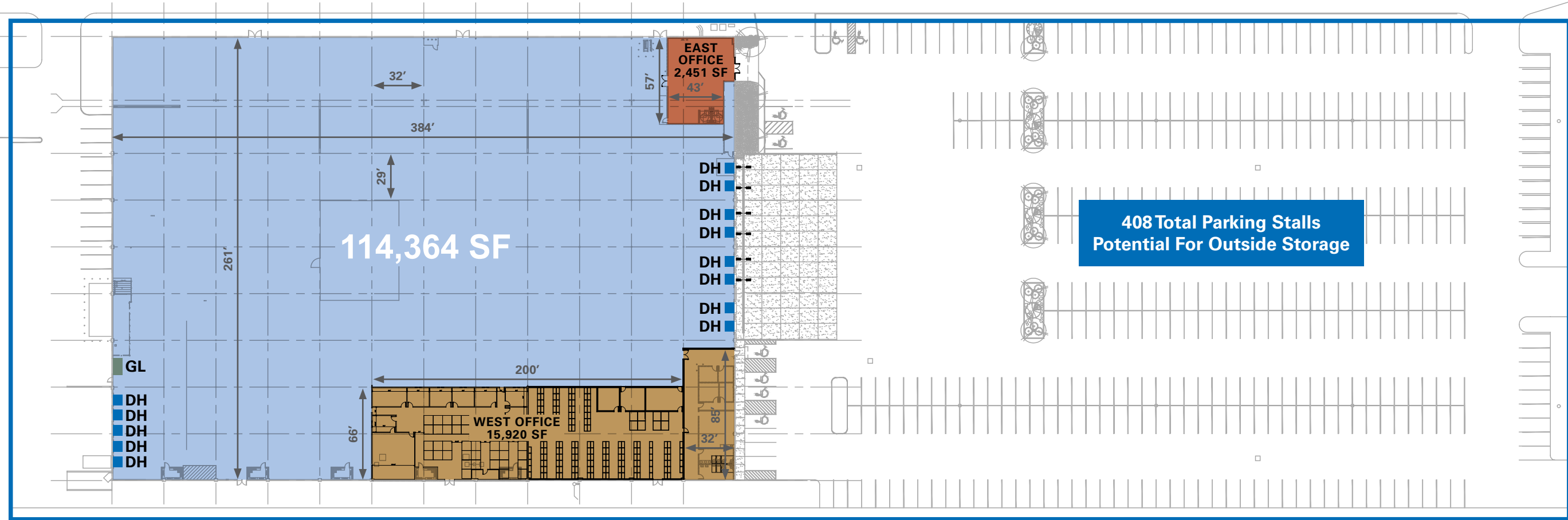
The information contained herein has been obtained from sources deemed reliable but has not been verified and no guarantee, warranty or representation, either express or implied, is made with respect to such information. Terms of sale or lease and availability are subject to change or withdrawal without notice.



To 7200 S



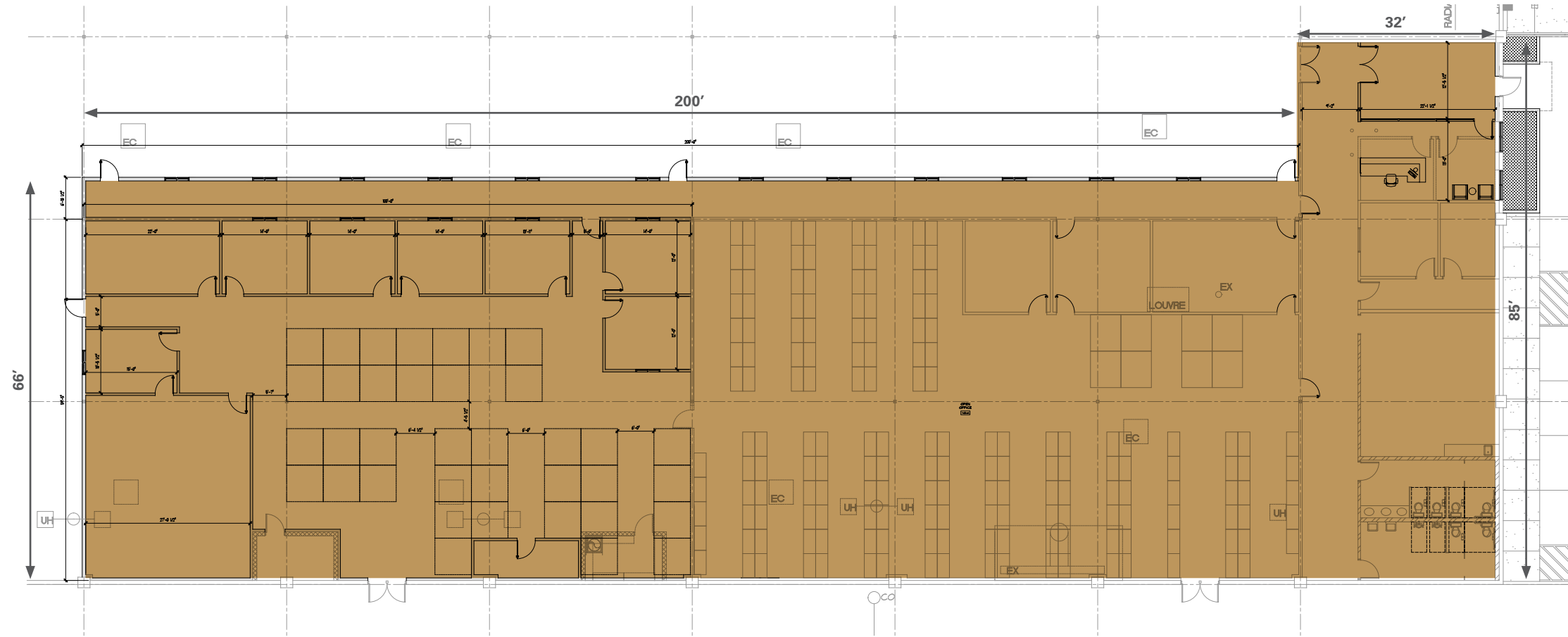
185 WEST



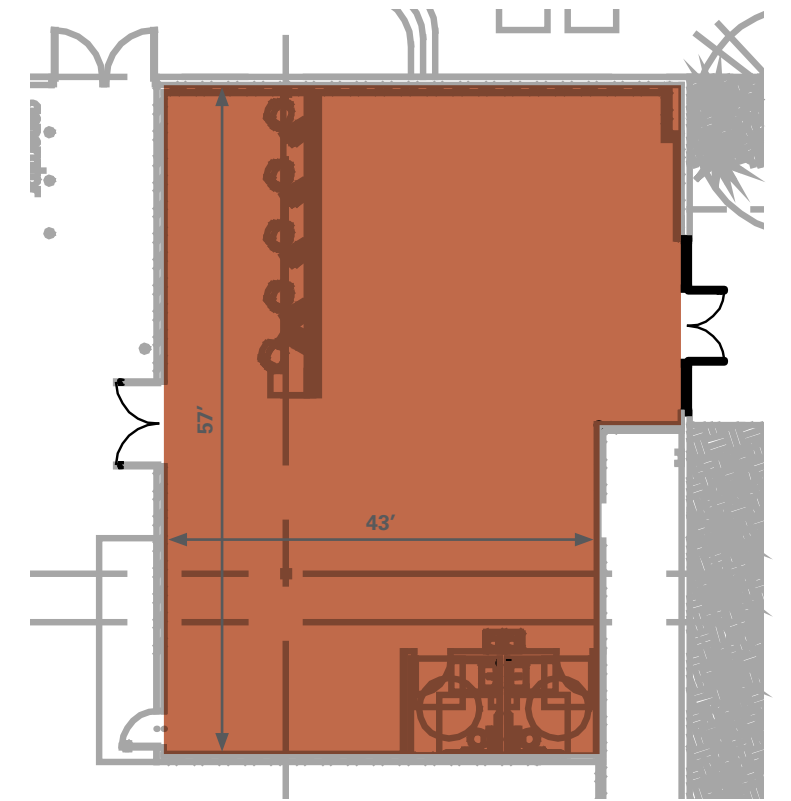
UTA  TRAX
7200 South Station 

UTA  TRAX

WEST OFFICE



EAST OFFICE

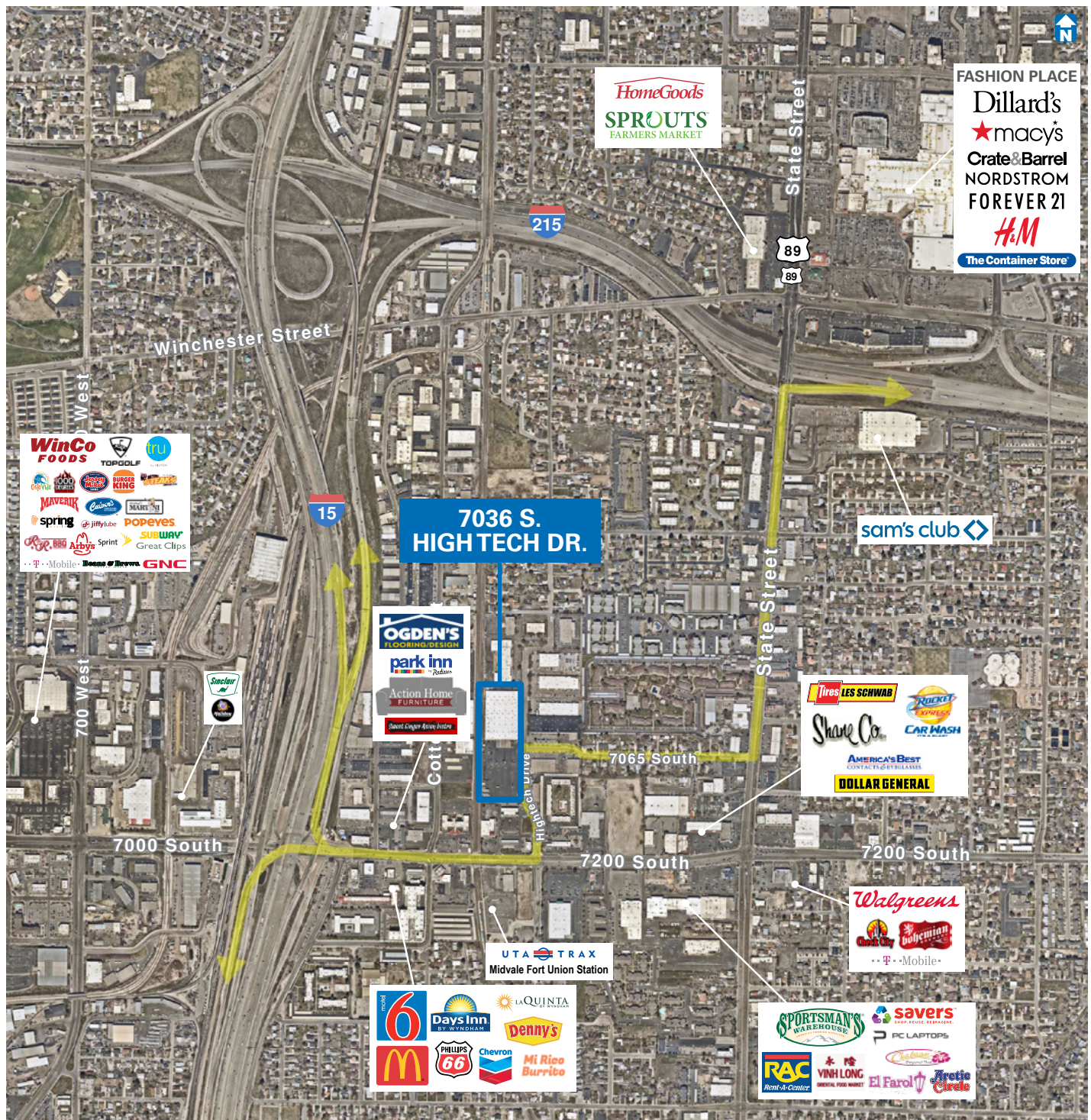


7036 S. HIGH TECH DR.



7036 S. HIGH TECH DR.





For information, please contact:

Jeff Heaton, SIOR
 Executive Managing Director
 t 801-578-5539
 jheaton@newmarkmw.com

Lucas M. Burbank
 Executive Managing Director
 t 801-578-5522
 lburbank@newmarkmw.com

Eli Priest
 Senior Managing Director
 t 801-746-4746
 epriest@newmarkmw.com

376 E. 400 S.
 Suite 120
 Salt Lake City, UT 84111



The information contained herein has been obtained from sources deemed reliable but has not been verified and no guarantee, warranty or representation, either express or implied, is made with respect to such information. Terms of sale or lease and availability are subject to change or withdrawal without notice.