

**3029 S. Sherwood Forest Blvd.
Baton Rouge, LA 70809**

**The C.J Brown Building
Office Space For Lease**

**BONUS
\$1,000 On Leases
Signed Before
June 1st, 2017**

Property Features

- \$13 PSF Full Service
- Great Parking
- Location! Near I-10 and I-12
- Monument Signage Available
- Controlled Access



NAILatter & Blum

Jonann Stutzman Ty Gose, CCIM

225.445.0473

225.295.0800

jonann@latterblum.com

ty@latterblum.com

LICENSED IN LOUISIANA. NO WARRANTY OR REPRESENTATION, EXPRESS OR IMPLIED, IS MADE AS TO THE ACCURACY OF THE INFORMATION CONTAINED HEREIN, AND THE SAME IS SUBMITTED SUBJECT TO ERRORS, OMISSIONS, CHANGE OF PRICE, RENTAL OR OTHER CONDITIONS, PRIOR SALE, LEASE OR FINANCING, OR WITHDRAWAL WITHOUT NOTICE, AND OF ANY SPECIAL LISTING CONDITIONS IMPOSED BY OUR PRINCIPALS NO WARRANTIES OR REPRESENTATIONS ARE MADE AS TO THE CONDITION OF THE PROPERTY OR ANY HAZARDS CONTAINED THEREIN ARE ANY TO BE IMPLIED.

1700 City Farm
Baton Rouge, LA 70806 USA
225.295.0800

www.latterblum.com

**3029 S. Sherwood Forest Blvd.
Baton Rouge, LA 70809**

**The C.J Brown Building
Office Space For Lease**



NAI **Latter & Blum**

Jonann Stutzman **Ty Gose, CCIM**
225.445.0473 225.295.0800
jonann@latterblum.com ty@latterblum.com

LICENSED IN LOUISIANA. NO WARRANTY OR REPRESENTATION, EXPRESS OR IMPLIED, IS MADE AS TO THE ACCURACY OF THE INFORMATION CONTAINED HEREIN, AND THE SAME IS SUBMITTED SUBJECT TO ERRORS, OMISSIONS, CHANGE OF PRICE, RENTAL OR OTHER CONDITIONS, PRIOR SALE, LEASE OR FINANCING, OR WITHDRAWAL WITHOUT NOTICE, AND OF ANY SPECIAL LISTING CONDITIONS IMPOSED BY OUR PRINCIPALS NO WARRANTIES OR REPRESENTATIONS ARE MADE AS TO THE CONDITION OF THE PROPERTY OR ANY HAZARDS CONTAINED THEREIN ARE ANY TO BE IMPLIED.

1700 City Farm
Baton Rouge, LA 70806 USA
225.295.0800
www.latterblum.com

3029 S. Sherwood Forest Blvd. Baton Rouge, LA 70809

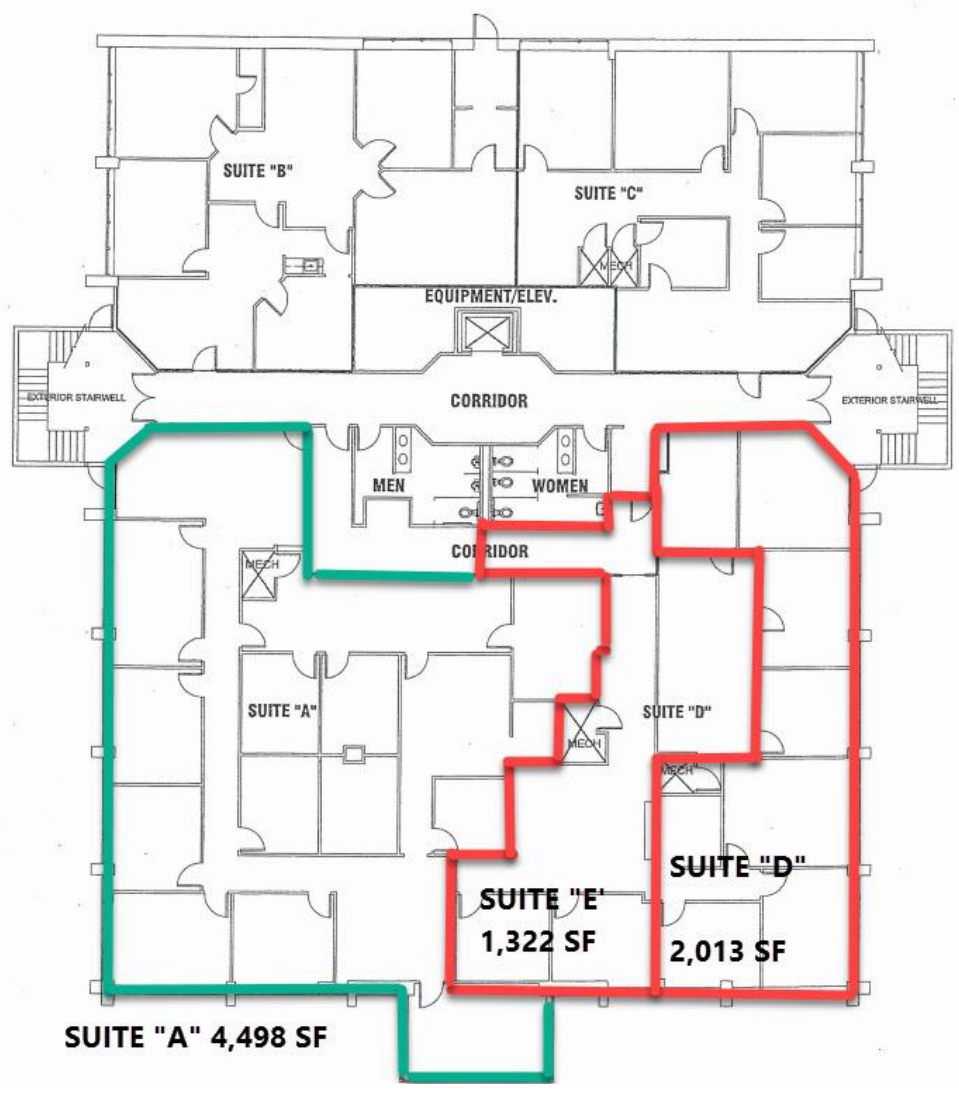
The C.J Brown Building
Office Space For Lease

1st Floor

Suite A -
\$4,872/mth

Suite D -
\$2,180/mth

Suite E -
\$1,432/mth



Jonann Stutzman Ty Gose, CCIM
225.445.0473 225.295.0800
jonann@latterblum.com ty@latterblum.com

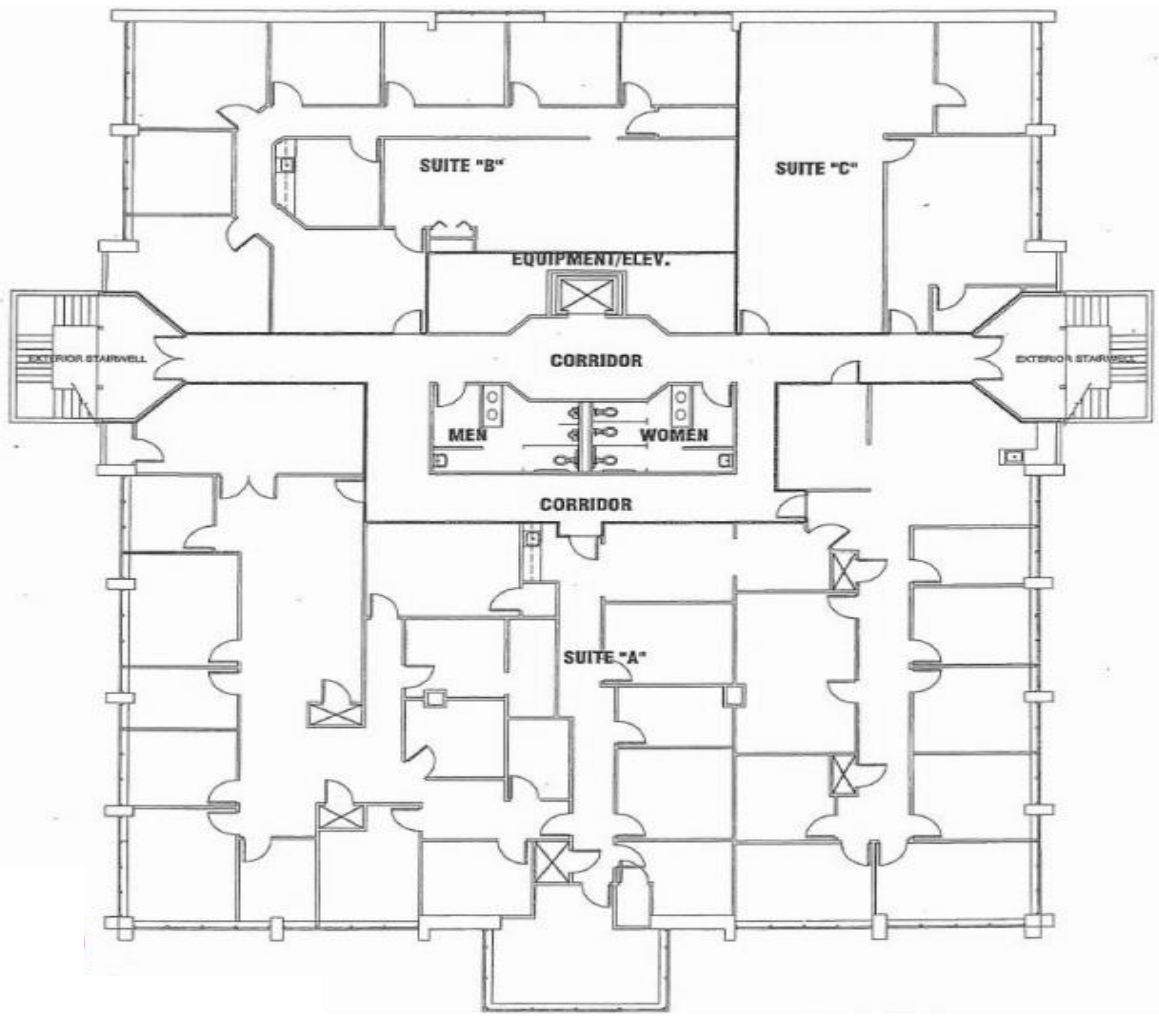
LICENSED IN LOUISIANA. NO WARRANTY OR REPRESENTATION, EXPRESS OR IMPLIED, IS MADE AS TO THE ACCURACY OF THE INFORMATION CONTAINED HEREIN, AND THE SAME IS SUBMITTED SUBJECT TO ERRORS, OMISSIONS, CHANGE OF PRICE, RENTAL OR OTHER CONDITIONS, PRIOR SALE, LEASE OR FINANCING, OR WITHDRAWAL WITHOUT NOTICE, AND OF ANY SPECIAL LISTING CONDITIONS IMPOSED BY OUR PRINCIPALS NO WARRANTIES OR REPRESENTATIONS ARE MADE AS TO THE CONDITION OF THE PROPERTY OR ANY HAZARDS CONTAINED THEREIN ARE ANY TO BE IMPLIED.

1700 City Farm
Baton Rouge, LA 70806 USA
225.295.0800
www.latterblum.com

**3029 S. Sherwood Forest Blvd.
Baton Rouge, LA 70809**

The C.J Brown Building
Office Space For Lease

2nd Floor – Suite 200
• 13,800 RSF (Entire Floor)



NAI **Latter & Blum**

Jonann Stutzman **Ty Gose, CCIM**
225.445.0473 225.295.0800
jonann@latterblum.com ty@latterblum.com

LICENSED IN LOUISIANA. NO WARRANTY OR REPRESENTATION, EXPRESS OR IMPLIED, IS MADE AS TO THE ACCURACY OF THE INFORMATION CONTAINED HEREIN, AND THE SAME IS SUBMITTED SUBJECT TO ERRORS, OMISSIONS, CHANGE OF PRICE, RENTAL OR OTHER CONDITIONS, PRIOR SALE, LEASE OR FINANCING, OR WITHDRAWAL WITHOUT NOTICE, AND OF ANY SPECIAL LISTING CONDITIONS IMPOSED BY OUR PRINCIPALS NO WARRANTIES OR REPRESENTATIONS ARE MADE AS TO THE CONDITION OF THE PROPERTY OR ANY HAZARDS CONTAINED THEREIN ARE ANY TO BE IMPLIED.

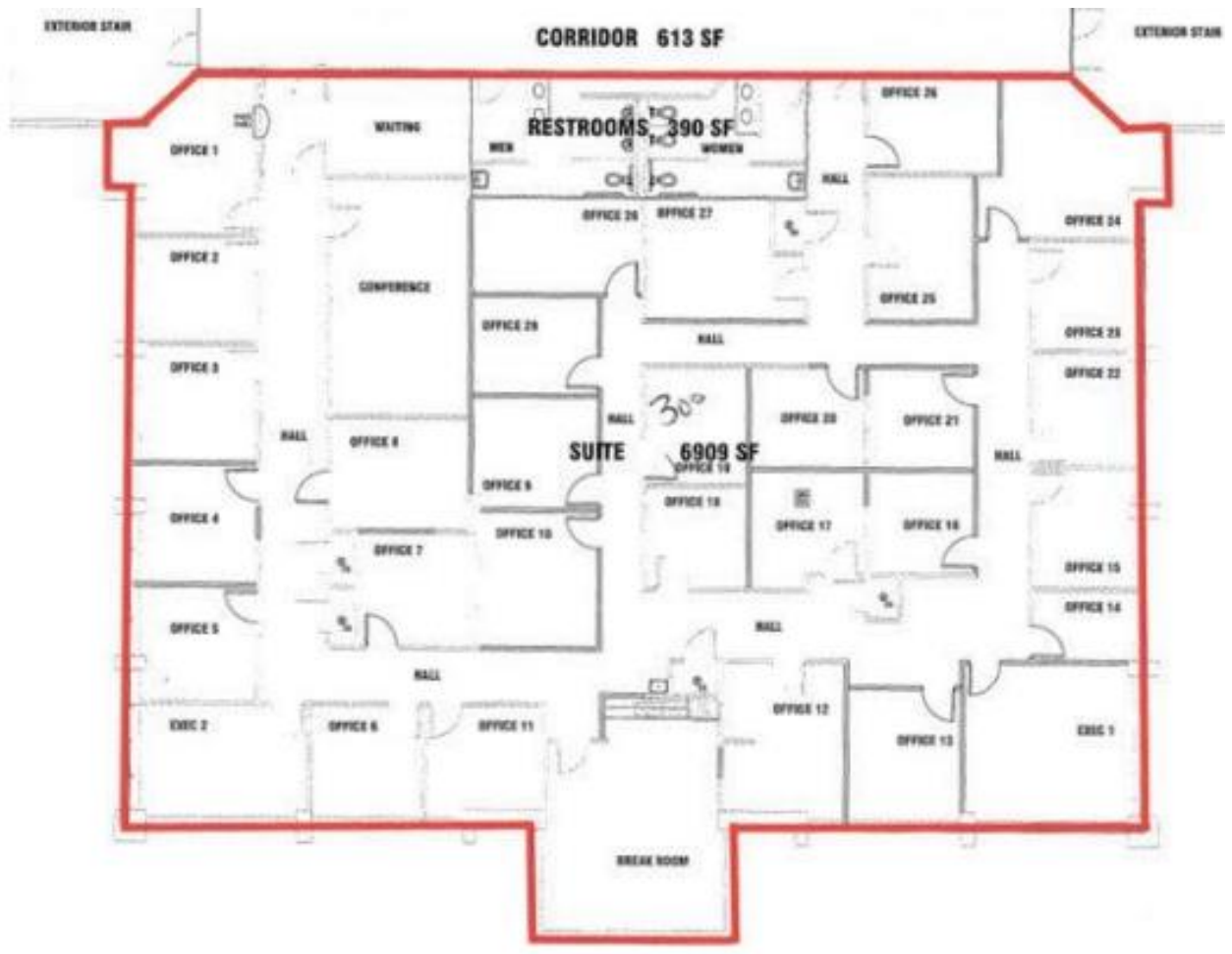
1700 City Farm
Baton Rouge, LA 70806 USA
225.295.0800
www.latterblum.com

3029 S. Sherwood Forest Blvd.
Baton Rouge, LA 70809

The C.J Brown Building
Office Space For Lease

3rd Floor – Suite 300

- 7,945 RSF



NALLatter & Blum

Jonann Stutzman Ty Gose, CCIM
225.445.0473 225.295.0800
jonann@latterblum.com ty@latterblum.com

LICENSED IN LOUISIANA. NO WARRANTY OR REPRESENTATION, EXPRESS OR IMPLIED, IS MADE AS TO THE ACCURACY OF THE INFORMATION CONTAINED HEREIN, AND THE SAME IS SUBMITTED SUBJECT TO ERRORS, OMISSIONS, CHANGE OF PRICE, RENTAL OR OTHER CONDITIONS, PRIOR SALE, LEASE OR FINANCING, OR WITHDRAWAL WITHOUT NOTICE, AND OF ANY SPECIAL LISTING CONDITIONS IMPOSED BY OUR PRINCIPALS NO WARRANTIES OR REPRESENTATIONS ARE MADE AS TO THE CONDITION OF THE PROPERTY OR ANY HAZARDS CONTAINED THEREIN ARE ANY TO BE IMPLIED.

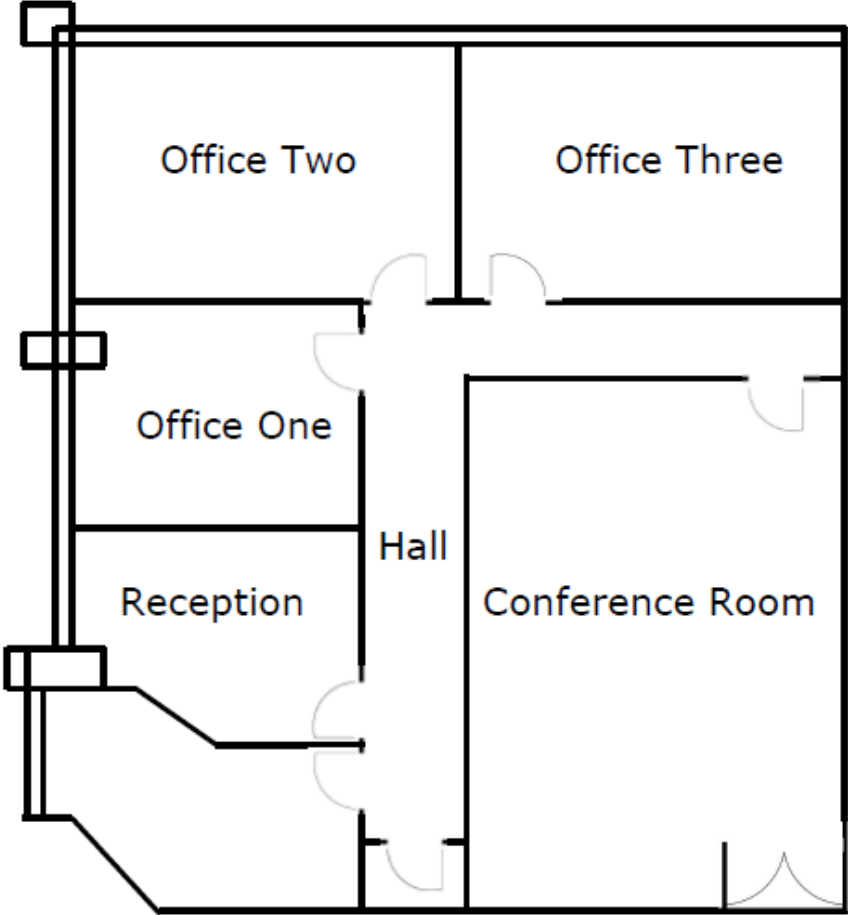
1700 City Farm
Baton Rouge, LA 70806 USA
225.295.0800
www.latterblum.com

**3029 S. Sherwood Forest Blvd.
Baton Rouge, LA 70809**

The C.J Brown Building
Office Space For Lease

3rd Floor – Suite 325

- 1,546 RSF
- \$1,674/mth



NAI Latter & Blum

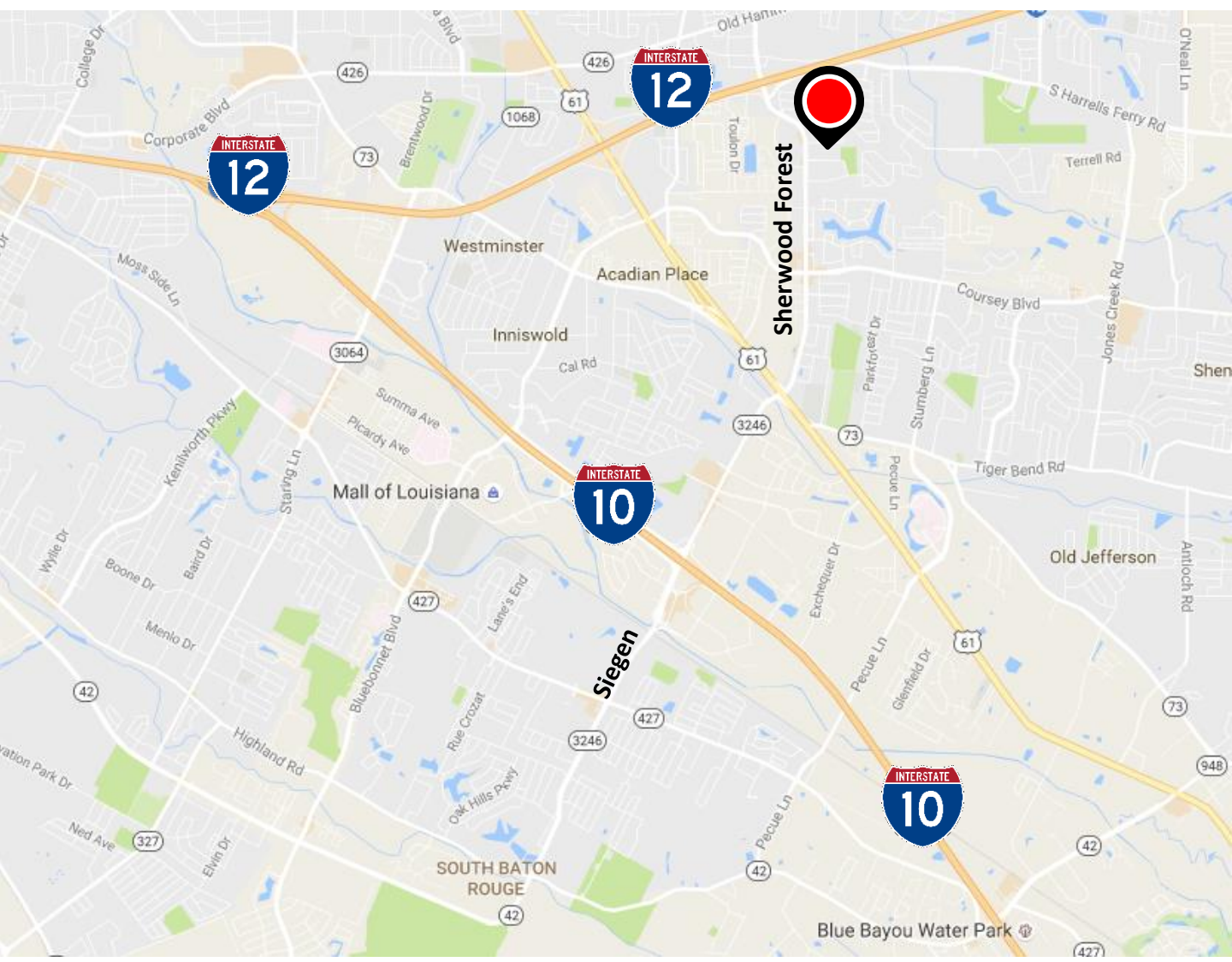
Jonann Stutzman **Ty Gose, CCIM**
225.445.0473 225.295.0800
jonann@latterblum.com ty@latterblum.com

LICENSED IN LOUISIANA. NO WARRANTY OR REPRESENTATION, EXPRESS OR IMPLIED, IS MADE AS TO THE ACCURACY OF THE INFORMATION CONTAINED HEREIN, AND THE SAME IS SUBMITTED SUBJECT TO ERRORS, OMISSIONS, CHANGE OF PRICE, RENTAL OR OTHER CONDITIONS, PRIOR SALE, LEASE OR FINANCING, OR WITHDRAWAL WITHOUT NOTICE, AND OF ANY SPECIAL LISTING CONDITIONS IMPOSED BY OUR PRINCIPALS NO WARRANTIES OR REPRESENTATIONS ARE MADE AS TO THE CONDITION OF THE PROPERTY OR ANY HAZARDS CONTAINED THEREIN ARE ANY TO BE IMPLIED.

1700 City Farm
Baton Rouge, LA 70806 USA
225.295.0800
www.latterblum.com

**3029 S. Sherwood Forest Blvd.
Baton Rouge, LA 70809**

The C.J Brown Building
Office Space For Lease



NAI **Latter & Blum**

Jonann Stutzman
225.445.0473
jonann@latterblum.com

Ty Gose, CCIM
225.295.0800
ty@latterblum.com

LICENSED IN LOUISIANA. NO WARRANTY OR REPRESENTATION, EXPRESS OR IMPLIED, IS MADE AS TO THE ACCURACY OF THE INFORMATION CONTAINED HEREIN, AND THE SAME IS SUBMITTED SUBJECT TO ERRORS, OMISSIONS, CHANGE OF PRICE, RENTAL OR OTHER CONDITIONS, PRIOR SALE, LEASE OR FINANCING, OR WITHDRAWAL WITHOUT NOTICE, AND OF ANY SPECIAL LISTING CONDITIONS IMPOSED BY OUR PRINCIPALS NO WARRANTIES OR REPRESENTATIONS ARE MADE AS TO THE CONDITION OF THE PROPERTY OR ANY HAZARDS CONTAINED THEREIN ARE ANY TO BE IMPLIED.

1700 City Farm
Baton Rouge, LA 70806 USA
225.295.0800
www.latterblum.com

**3029 S. Sherwood Forest Blvd.
Baton Rouge, LA 70809**

**The C.J Brown Building
Office Space For Lease**



NAI **Latter & Blum**

Jonann Stutzman
225.445.0473
jonann@latterblum.com

Ty Gose, CCIM
225.295.0800
ty@latterblum.com

LICENSED IN LOUISIANA. NO WARRANTY OR REPRESENTATION, EXPRESS OR IMPLIED, IS MADE AS TO THE ACCURACY OF THE INFORMATION CONTAINED HEREIN, AND THE SAME IS SUBMITTED SUBJECT TO ERRORS, OMISSIONS, CHANGE OF PRICE, RENTAL OR OTHER CONDITIONS, PRIOR SALE, LEASE OR FINANCING, OR WITHDRAWAL WITHOUT NOTICE, AND OF ANY SPECIAL LISTING CONDITIONS IMPOSED BY OUR PRINCIPALS NO WARRANTIES OR REPRESENTATIONS ARE MADE AS TO THE CONDITION OF THE PROPERTY OR ANY HAZARDS CONTAINED THEREIN ARE ANY TO BE IMPLIED.

1700 City Farm
Baton Rouge, LA 70806 USA
225.295.0800
www.latterblum.com