

# MEDICAL CONDOS FOR SALE

SKYVIEW MEDICAL PARK - OFFICE CONDOS

950 W. IRONWOOD DR.  
COEUR D'ALENE, ID 83814



## OFFERING SUMMARY

**Individual Condo Price** \$215K - \$425K\*

**Available SFT** 7,384 SFT

**No. of Condos** 4

**Available** Within 30 Days

\*Pricing Structure on page 3



**PROPERTY VIDEO - CLICK HERE**

## UPCOMING RENOVATIONS

- Est. Completion Spring 2026
- Parking Lot repaved and re-stripped
- Building power washed
- Carpet in Main Lobby replaced
- Skylights polished

## PROPERTY HIGHLIGHTS

- Own your own medical suite in the heart of the CDA Medical District
- 4 Condo Suites available to purchase together or separately
- 3 Suites available on upper level
- 1 suite available on lower level with dedicated entrance and covered parking

**STEVEN DAINES**  
**SETH PETERSON**

• 509.209.4920 • [SETH@DAINESCAPITAL.COM](mailto:SETH@DAINESCAPITAL.COM)

[WWW.DAINESCAPITAL.COM](http://WWW.DAINESCAPITAL.COM)

# MEDICAL CONDOS FOR SALE

SKYVIEW MEDICAL PARK - OFFICE CONDOS

950 W. IRONWOOD DR.  
COEUR D'ALENE, ID 83814



## PROPERTY DETAILS

\*PYLON SIGN DISPLAYED ALONG IRONWOOD

<b>BLDG. SFT</b>	11,978 SFT	<b>PIN</b>	C830000000010	<b>FLOORS</b>	3
<b>LAND AREA</b>	0.80 AC	<b>PARKING</b>	49 STALLS	<b>CONSTRUCTION</b>	CONCRETE
<b>TOTAL CONDOS</b>	6	<b>ZONING</b>	C-17L	<b>BUILT</b>	1985

STEVEN DAINES  
SETH PETERSON

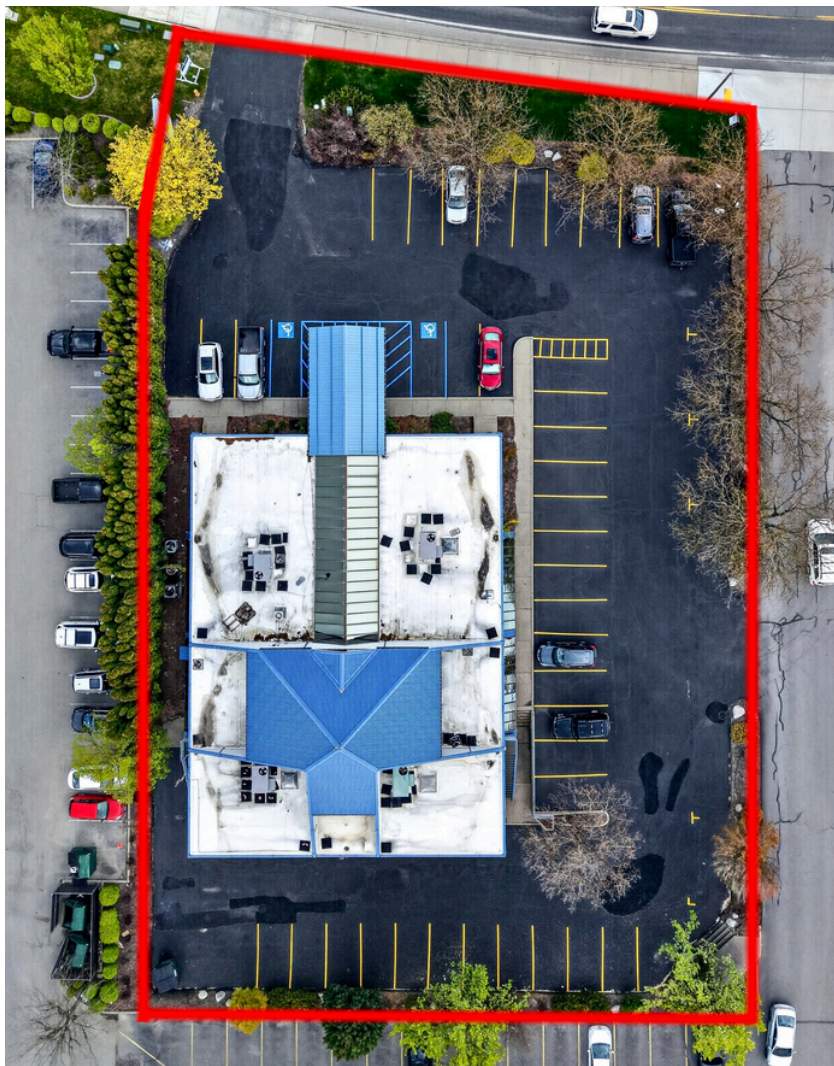
• 509.209.4920 • SETH@DAINESCAPITAL.COM

WWW.DAINESCAPITAL.COM

# MEDICAL CONDOS FOR SALE

SKYVIEW MEDICAL PARK - OFFICE CONDOS

950 W. IRONWOOD DR.  
COEUR D'ALENE, ID 83814



## Condo #1

- 1,653 Rentable SFT
- 1,323 Usable SFT
- \$300,000
- \$181.48/SFT

## Condo #3

- 2,647 Rentable SFT
- 2,118 Usable SFT
- \$425,000
- \$160.56/SFT

## Condo #4

- 1,168 Rentable SFT
- 935 Usable SFT
- \$215,000
- \$184.07/SFT

## Condo #5

- 1,916 Rentable SFT
- 1,533 Usable SFT
- \$340,000
- \$177.45/SFT

## All in One Price:

- 7,384 Rentable SFT
- 5,909 Usable SFT
- \$1,275,000
- \$172.67/SFT

STEVEN DAINES  
SETH PETERSON

• 509.209.4920 • SETH@DAINESCAPITAL.COM

WWW.DAINESCAPITAL.COM

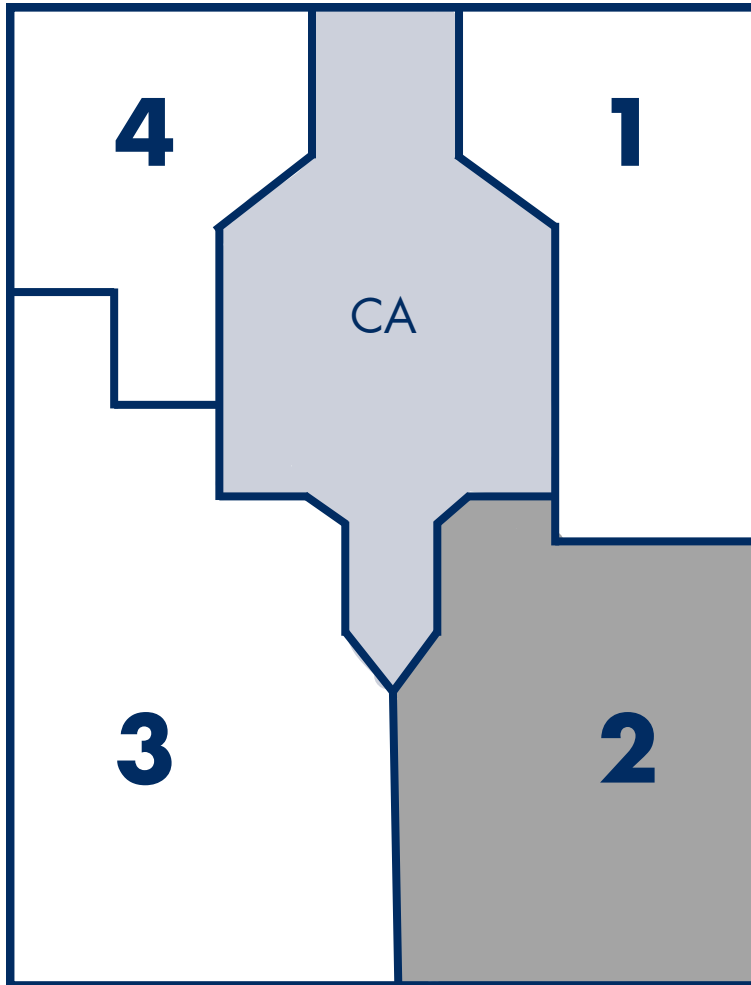
# MEDICAL CONDOS FOR SALE

SKYVIEW MEDICAL PARK - OFFICE CONDOS

950 W. IRONWOOD DR.  
COEUR D'ALENE, ID 83814

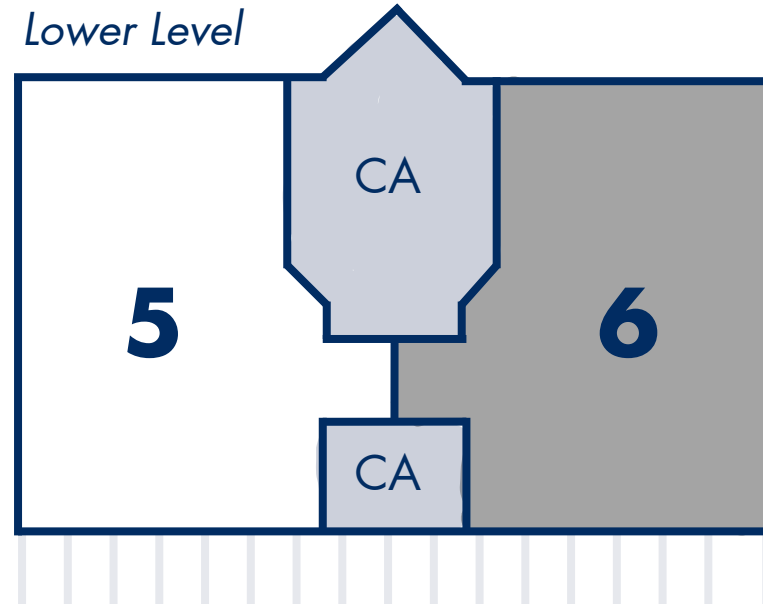


Upper Level



\*Floor plan not drawn to scale

Lower Level



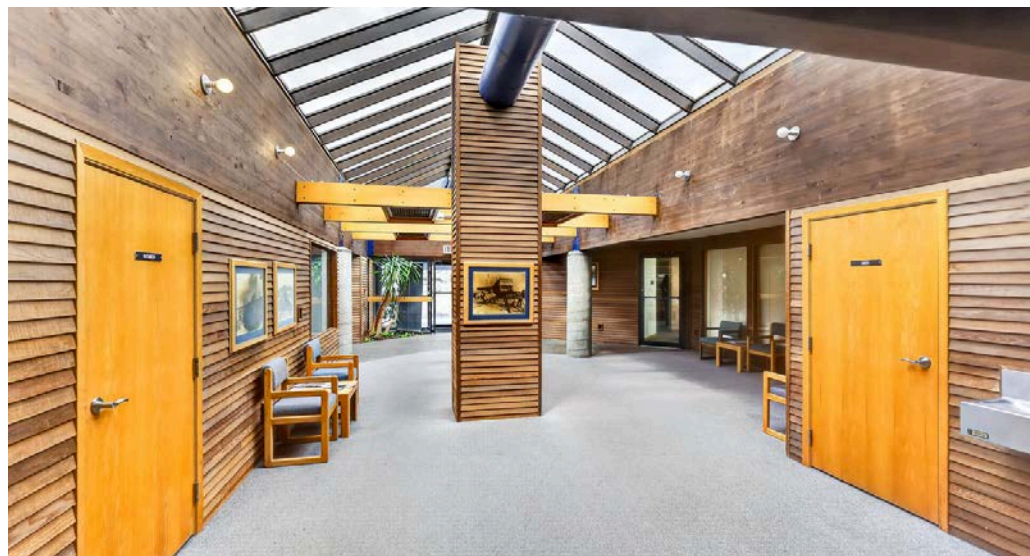
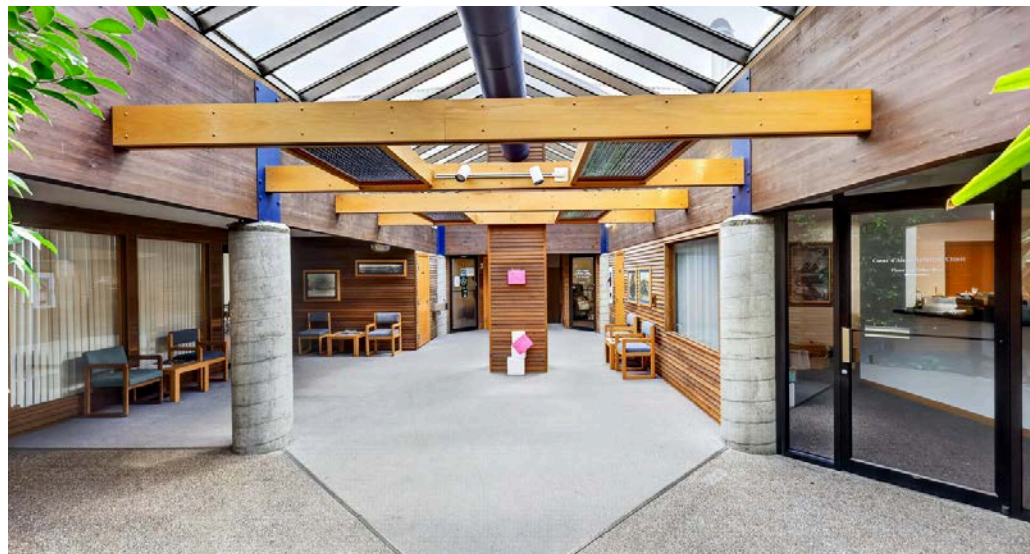
Covered parking, C5 has own entrance

- Common Area
- Not For Sale

# MEDICAL CONDOS FOR SALE

SKYVIEW MEDICAL PARK - OFFICE CONDOS

950 W. IRONWOOD DR.  
COEUR D'ALENE, ID 83814



STEVEN DAINES  
SETH PETERSON

• 509.209.4920 • SETH@DAINESCAPITAL.COM

WWW.DAINESCAPITAL.COM

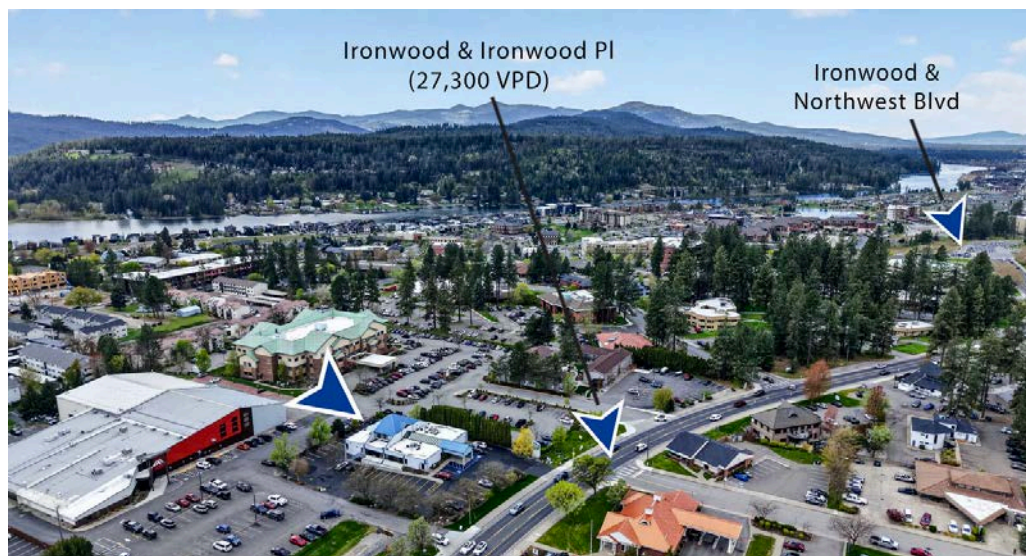
# MEDICAL CONDOS FOR SALE

SKYVIEW MEDICAL PARK - OFFICE CONDOS

950 W. IRONWOOD DR.  
COEUR D'ALENE, ID 83814



DAINES CAPITAL  
COMMERCIAL REAL ESTATE



STEVEN DAINES  
SETH PETERSON

• 509.209.4920 • SETH@DAINESCAPITAL.COM

WWW.DAINESCAPITAL.COM



# MEDICAL CONDOS FOR SALE

SKYVIEW MEDICAL PARK - OFFICE CONDOS

**950 W. IRONWOOD DR.  
COEUR D'ALENE, ID 83814**



## **950 W. IRONWOOD DR. COEUR D'ALENE, ID**

Size: 7,384 SFT

List Price: \$1,275,000

\$/SFT: \$172.67

Land Size: 0.23 AC

YR Built: 1985



## **980 W. IRONWOOD DR. COEUR D'ALENE, ID**

Size: 3,693 SFT (shell space)

List Price: \$599K

\$/SFT: \$162.20

Land Size: 3.46 AC

YR Built: 2006

Days on Market: 1,232



## **980 W. IRONWOOD DR. COEUR D'ALENE, ID**

Size: 2,084 SFT

Sold Dec. 2025: \$630K

\$/SFT: \$302.30

Land Size: 3.46 AC

YR Built: 2006

Days on Market: 130



## **621 W. MALLON AVE. #302, SPOKANE, WA**

Size: 680 SFT

Sold May 2025: \$245K

\$/SFT: \$292.36

Land Size: 2.2 AC

YR Built: 1896 | 2006

Days on Market: 82

# MEDICAL CONDOS FOR SALE

SKYVIEW MEDICAL PARK - OFFICE CONDOS

**950 W. IRONWOOD DR.  
COEUR D'ALENE, ID 83814**



DEMOGRAPHICS	1 MILE	3 MILE
Population	7,847	52,918
Households	3,859	22,386
Median Age	39	41
Median HH Income	\$40,980	\$64,710
Daytime Employees	20,297	42,873
Population Growth '25 -'30	4.26%	4.37%
Household Growth '25 -'30	4.38%	4.82%

COLLECTION STREET	CROSS STREET	TRAFFIC VOL
I-90	Lincoln Way E	47,428
W. Ironwood Dr.	Ironwood Pl. E	13,720
W. Ironwood Dr.	Lincoln Way E	13,687

No representation, express or implied, is made as to the accuracy of information contained herein. All information is from sources deemed reliable and submitted subject to errors, omissions, change or terms and conditions without notice. Buyers are solely responsible to conduct their own due diligence to their independent satisfaction.



**STEVEN DAINES  
SETH PETERSON**

• 509.209.4920 • SETH@DAINESCAPITAL.COM

WWW.DAINESCAPITAL.COM