



# For Lease

## Augusta Street Retail

**1443 Augusta St  
Greenville, SC  
29605  
±2000 sq ft**

**Join The Cheese Wheel and  
Freecoat Nails  
On Site Parking**



- Est 2025 TICAM  
\$8.93 psf
- City of Greenville
- MX-2 Zoning

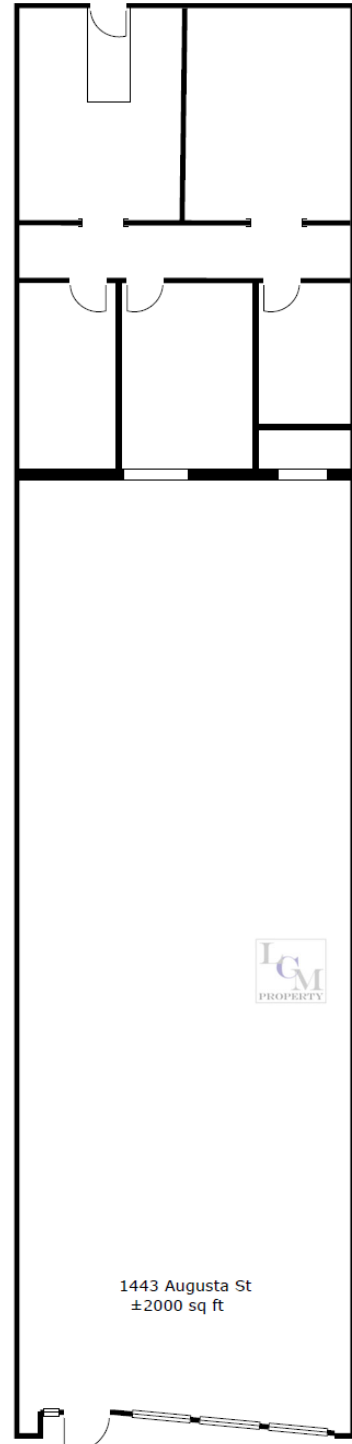
**Asking Rate \$25/sf NNN**

**Contact: J. Austin 864-444-1457**

[jaustin@legacycmproperty.com](mailto:jaustin@legacycmproperty.com)



# 1443 Augusta St. Greenville, SC



**Contact: J. Austin 864-444-1457**

[jaustin@legacycmproperty.com](mailto:jaustin@legacycmproperty.com)



# 1443 Augusta St. Greenville, SC



## Population

	2 mile	5 mile	10 mile
2010 Population	31,538	133,522	348,930
2023 Population	38,658	154,976	401,524
2028 Population Projection	40,069	159,507	413,430
Annual Growth 2010-2023	1.7%	1.2%	1.2%
Annual Growth 2023-2028	0.7%	0.6%	0.6%
Median Age	42.1	38	39.1
Bachelor's Degree or Higher	38%	30%	34%
U.S. Armed Forces	38	162	374

**Contact: J. Austin 864-444-1457**

[jaustin@legacycmproperty.com](mailto:jaustin@legacycmproperty.com)