

**±64,080 SF  
AVAILABLE  
FOR LEASE**



## **INTERWOOD BUSINESS CENTER**

14445 HEATHROW FOREST PARKWAY  
HOUSTON, TX 77032

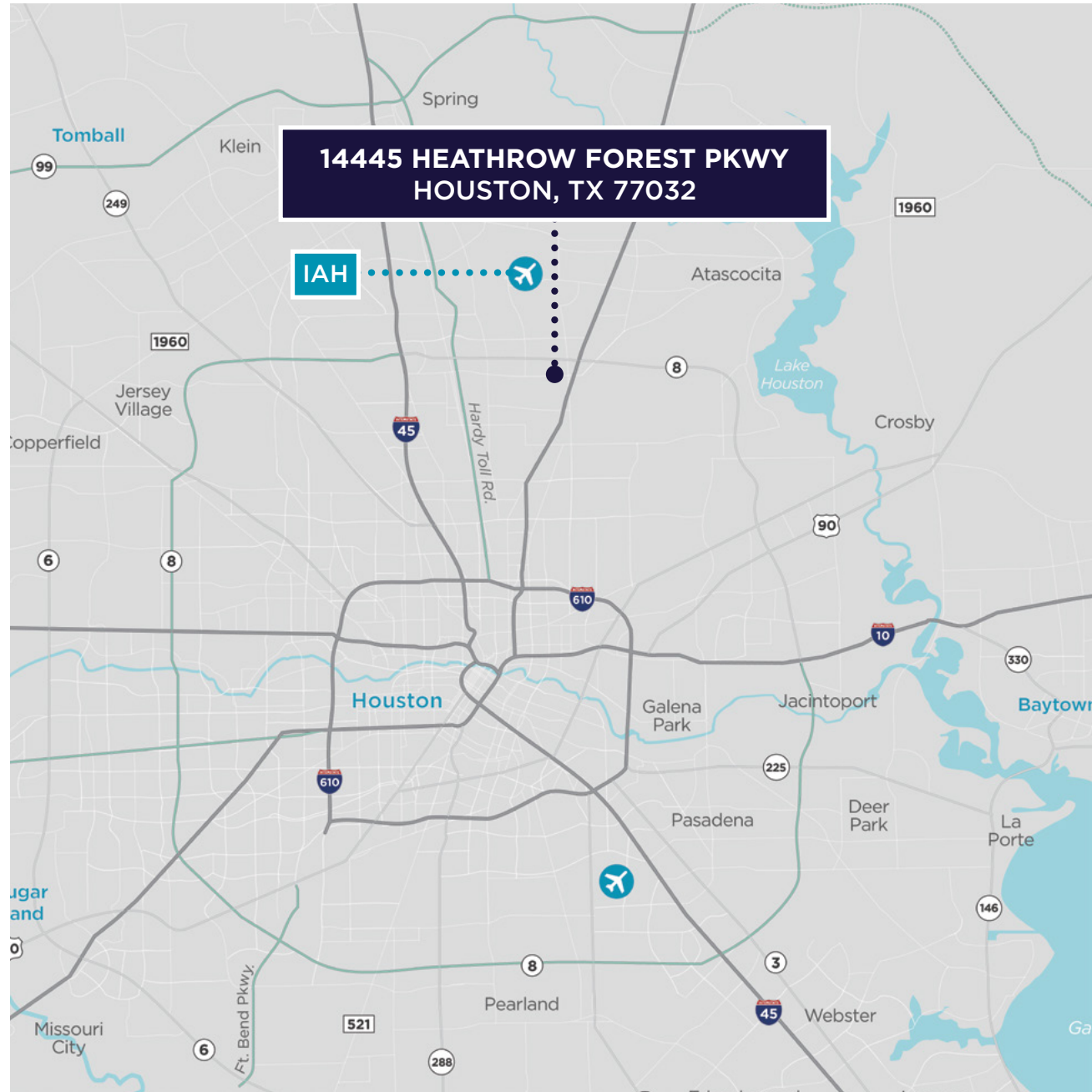


# INTERWOOD BUSINESS CENTER

14445 HEATHROW FOREST PARKWAY  
HOUSTON, TX 77032

## PROPERTY INFORMATION

- ±64,080 SF Available SF
- ±6,650 SF Office A
- ±1,395 SF Office B
- ±56,035 SF Warehouse
- Front Load
- 24' Clear
- (14) Dock High Doors
- (3) Drive-in Doors
- Oversized Ramp
- 75+ Car Parks
- 190' Shared Truck Court
- ±10,000 SF IOS
- Sprinkler System
- Concrete Tilt-Wall Construction
- 43'4" x 40' Column Spacing
- 3 HVLS Warehouse Fans
- One (1) Mile South of George Bush Intercontinental (IAH) Airport
- Located within Master-Planned & Deed Restricted Interwood Business Park
- Available July 2026

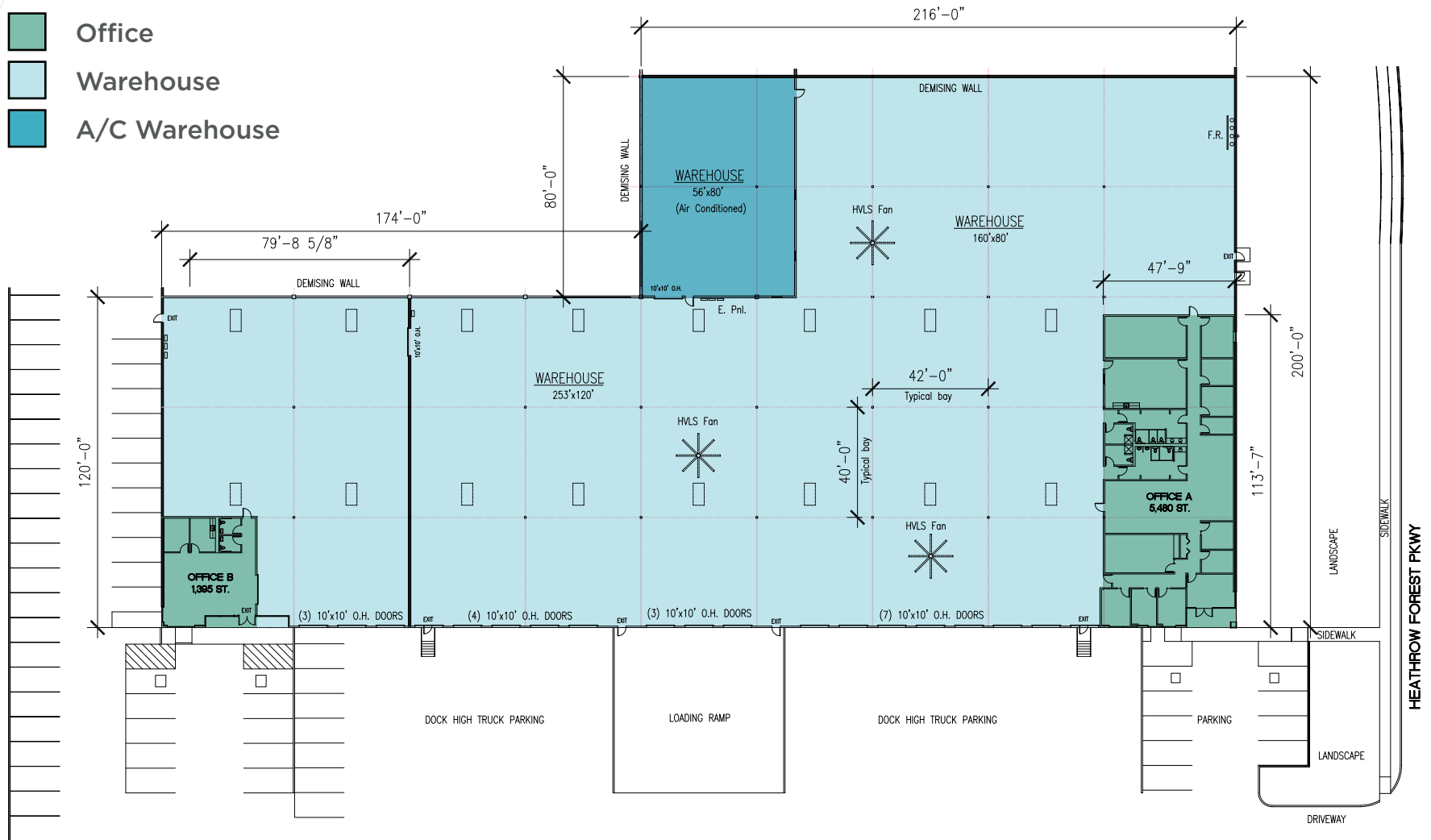


# INTERWOOD BUSINESS CENTER

14445 HEATHROW FOREST PARKWAY  
HOUSTON, TX 77032

## FLOOR PLAN

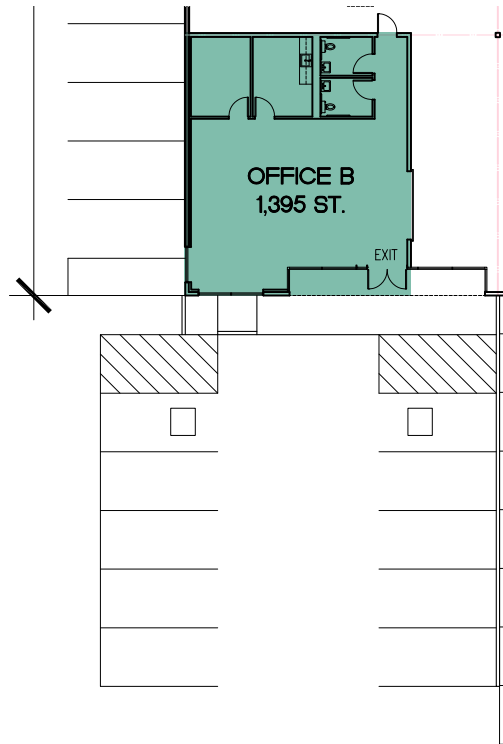
- Office
- Warehouse
- A/C Warehouse



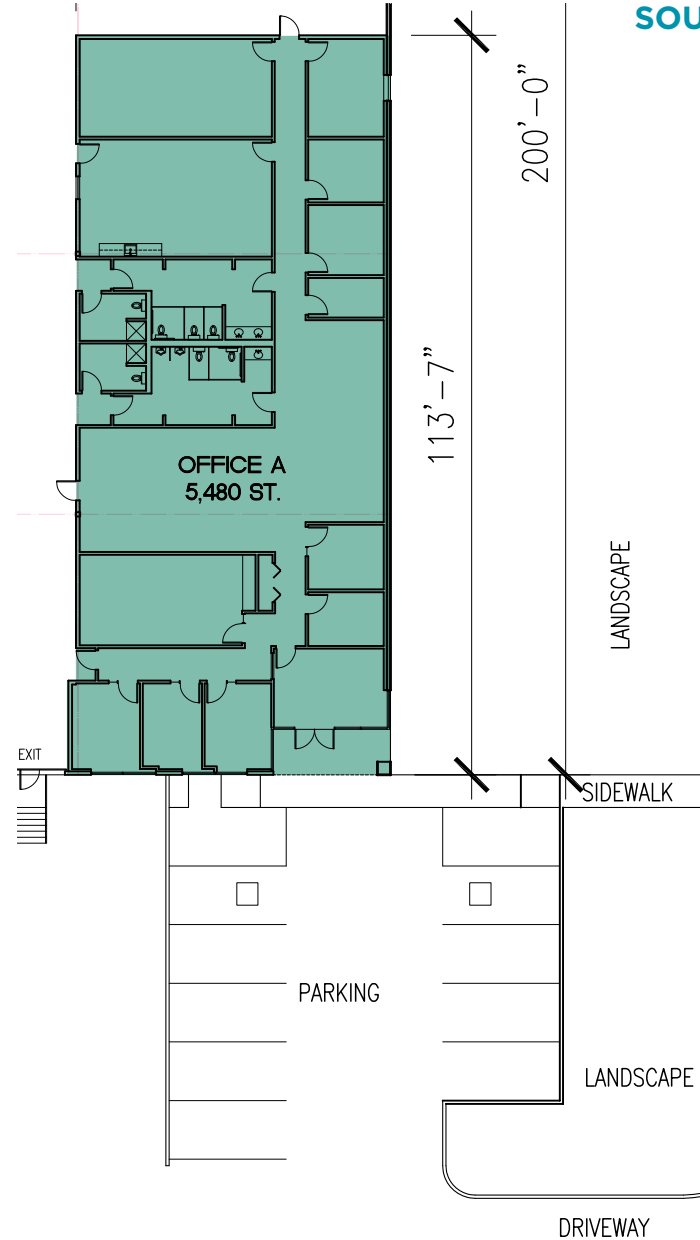
# INTERWOOD BUSINESS CENTER

14445 HEATHROW FOREST PARKWAY  
HOUSTON, TX 77032

## OFFICE PLANS



NORTH OFFICE



SOUTH OFFICE

# INTERWOOD BUSINESS CENTER

14445 HEATHROW FOREST PARKWAY  
HOUSTON, TX 77032

## CORPORATE NEIGHBORS



8

N Sam Houston Pkwy E

SouthernCarlson

PAUDAVIS  
RECOVER • RECONSTRUCT • RESTORE

PARAMOUNT

convergint

John F Kennedy Blvd

RWSMITH

Interwood North Pkwy

THE SALVATION ARMY

WingsOn Furniture, Inc. Texas

Bayport Laboratories  
The Science of Beauty

Aeropark Dr

HIE

GCP

C-P CHIPOLBROK AMERICA INC

Tailift

Interwood South Pkwy

U.S. Customs and Border Protection

Pelican  
Worldwide

US FOODS

neopal

Heathrow Forest Pkwy

ASTA AMERICA  
BY JANUS INTERNATIONAL

SUHM  
SERVING HOSPITALS

Aldine Bender Rd

Aldine Bender Rd

INTERWOOD BUSINESS CENTER

FedEx

UNITED STATES POSTAL SERVICE

NOBLE

Heathrow Forest Pkwy

AVERITT

Del Monte Quality

HALLIBURTON



GEORGE BUSH  
INTERCONTINENTAL  
AIRPORT (IAH)  
1 MILE

64,080 SF

Aldine-Bender Rd

John F Kennedy Blvd

Heathrow Forest Pkwy

**FOR MORE INFORMATION, CONTACT:**

**JOHN KRUSE**  
Managing Director  
Direct: +1 281 688 9234  
Mobile: +1 713 304 4919  
john.kruse@cushwake.com

**CARTER HOLMES**  
Senior Director  
Direct: +1 281 688 9274  
Mobile: +1 713 417 5447  
carter.holmes@cushwake.com

©2026 Cushman & Wakefield. All rights reserved. The information contained in this communication is strictly confidential. This information has been obtained from sources believed to be reliable but has not been verified. NO WARRANTY OR REPRESENTATION, EXPRESS OR IMPLIED, IS MADE AS TO THE CONDITION OF THE PROPERTY (OR PROPERTIES) REFERENCED HEREIN OR AS TO THE ACCURACY OR COMPLETENESS OF THE INFORMATION CONTAINED HEREIN, AND SAME IS SUBMITTED SUBJECT TO ERRORS, OMISSIONS, CHANGE OF PRICE, RENTAL OR OTHER CONDITIONS, WITHDRAWAL WITHOUT NOTICE, AND TO ANY SPECIAL LISTING CONDITIONS IMPOSED BY THE PROPERTY OWNER(S). ANY PROJECTIONS, OPINIONS OR ESTIMATES ARE SUBJECT TO UNCERTAINTY AND DO NOT SIGNIFY CURRENT OR FUTURE PROPERTY PERFORMANCE. PD-191045-V1

