

Industrial Property | For Sale

11535 Maui Ln Edmond, OK 73034



Caleb Cox | 405-923-6240 | caleb@itgcre.com

ITG INDUSTRIAL
TENANT GROUP

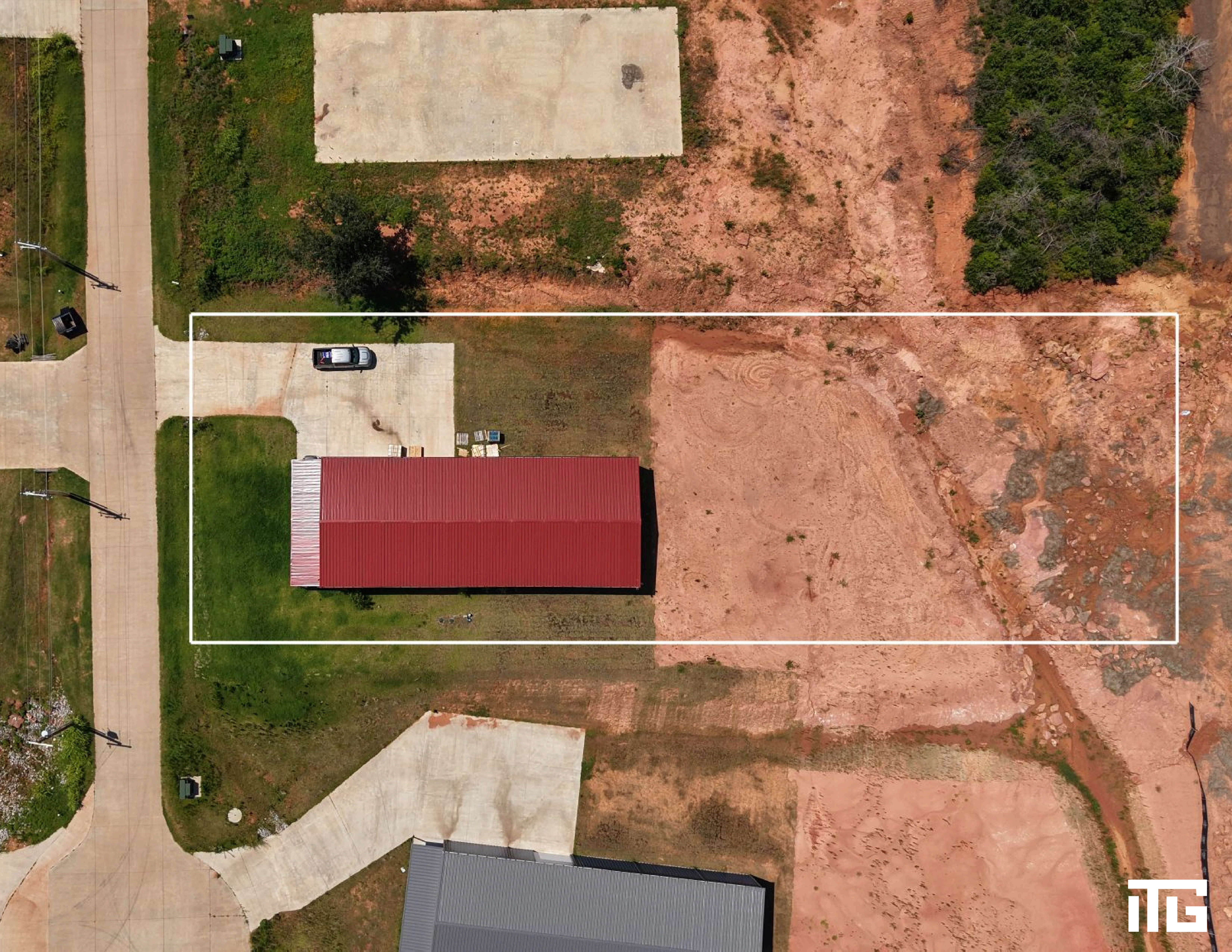
DETAILS

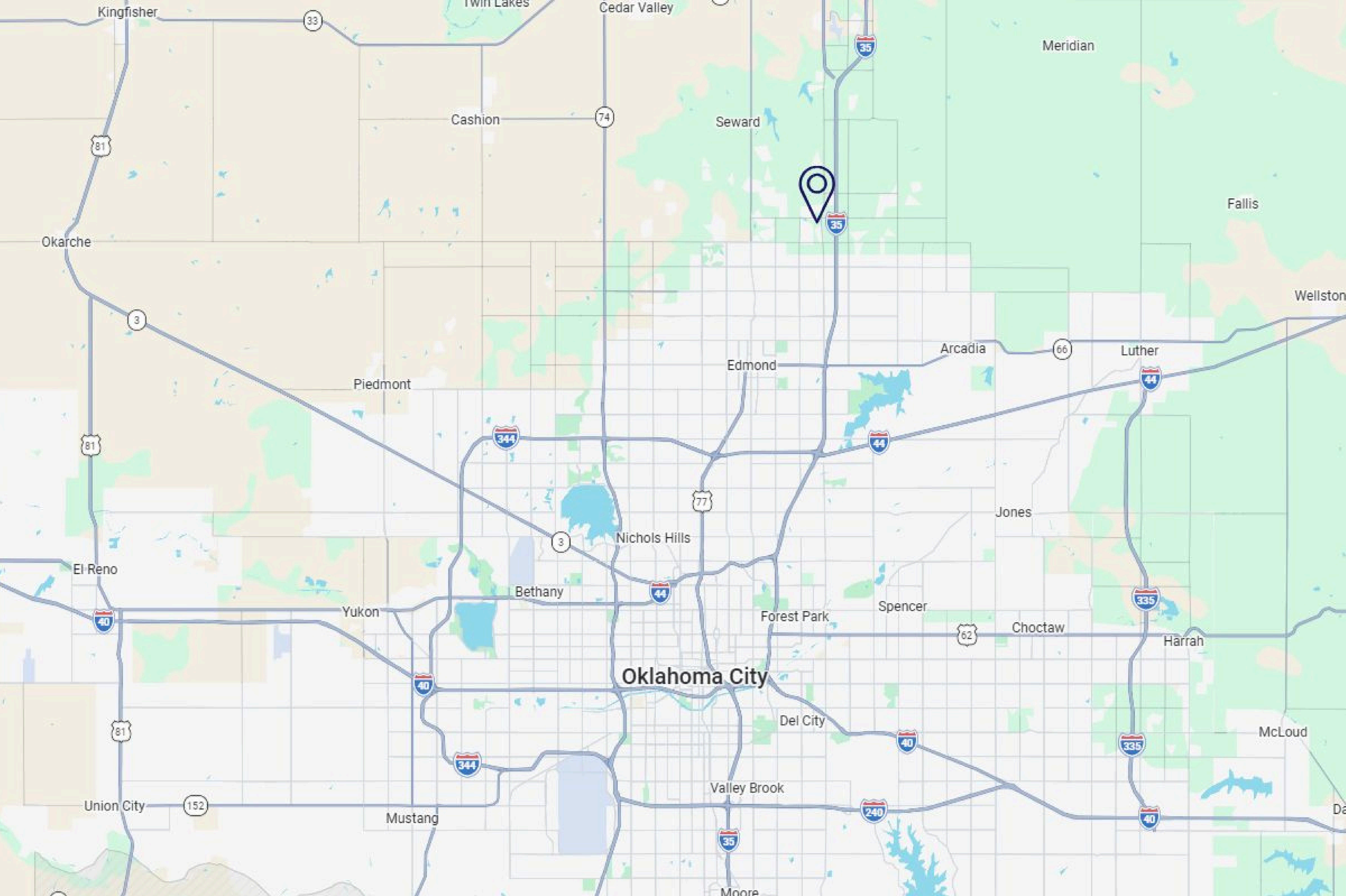
Sale Price:	\$395,000
Building Size:	4,000+/- SF
Year Built:	2023
County:	Logan
Lot Size:	1.00 +/- Acre
Zoning:	Unincorporated
Power:	400a/3p
Drive-Ins:	(1) 14'T x 12'W (1) 10'T x 10'W
Clear Height:	15'
Market:	Oklahoma City Metro
Sewer:	Septic
Water:	Well
Gas:	Natural



This 4,000 +/- SF clear span warehouse sits on a full 1 acre lot in one of the area's fastest developing corridors. The building features foam insulation throughout while the clear span design delivers unobstructed square footage that adapts to warehousing, distribution, or light industrial use. The oversized lot provides ample room for outside storage, fleet parking, or future expansion. The site offers quick access to Sooner Rd and close proximity to I-35.







Caleb Cox
405-923-6240
caleb@itgcre.com

industrialtenantgroup.com
101 Park Ave, Suite 1300, Oklahoma City, OK 73102



The information contained herein was obtained from sources believed reliable; however, Industrial Tenant Group makes no guarantees, warranties or representations as to the completeness or accuracy thereof. The presentation of this property is submitted subject to errors, omissions, change of price or conditions prior to sale or lease, or withdrawal without notice.