



# Shell Ridge Medical Office Buildings

106, 110, 112 La Casa Via, Walnut Creek

For more  
Information  
please contact

**Trent Barmby**  
+1 925.944.2151  
[trent.barmby@am.jll.com](mailto:trent.barmby@am.jll.com)  
RE License #01837549





# Photos



## Shell Ridge Medical Office Buildings

106, 108, 110, 112 La Casa Via, Walnut Creek

© 2025 Jones Lang LaSalle IP, Inc. All rights reserved.

Jones Lang LaSalle Brokerage, Inc. RE Lic# 01856260

Although information has been obtained from sources deemed reliable, neither Owner nor JLL makes any guarantees, warranties or representations, express or implied, as to the completeness or accuracy as to the information contained herein. Any projections, opinions, assumptions or estimates used are for example only. There may be differences between projected and actual results, and those differences may be material. The Property may be withdrawn without notice. Neither Owner nor JLL accepts any liability for any loss or damage suffered by any party resulting from reliance on this information. If the recipient of this information has signed a confidentiality agreement regarding this matter, this information is subject to the terms of that agreement. ©2025. Jones Lang LaSalle IP, Inc. All rights reserved.



## Property Highlights

- Property is adjacent to John Muir Medical Center Walnut Creek
- Close proximity to Ygnacio Plaza retail & dining amenities
- Convenient access off of Ygnacio Valley Road
- Zoned for medical office or administrative office
- Convenient on-site parking of 4.2 stalls per 1000 RSF leased
- New HVAC Upgrade in all buildings
- New Elevator Modernization in Buildings #106, #110 and #112

## Availabilities

### 106 La Casa Via

Suite 200 - 1,289 RSF

Suite 250 - 699 RSF

### 110 La Casa Via

Suite 130 - 477 RSF

Suite 200 - 1,046 RSF

Suite 207 - 1,249 RSF

Suite 210 - 874 RSF

### 112 La Casa Via

Suite 120 - 752 RSF

Suite 125 - 1,252 RSF

Suite 130 - 1,263 RSF

Suite 132 - 571 RSF

Suite 260 - 4,681 RSF

Suite 360 - 1,578 RSF

} Can be combined  
for up to 6,572 RSF

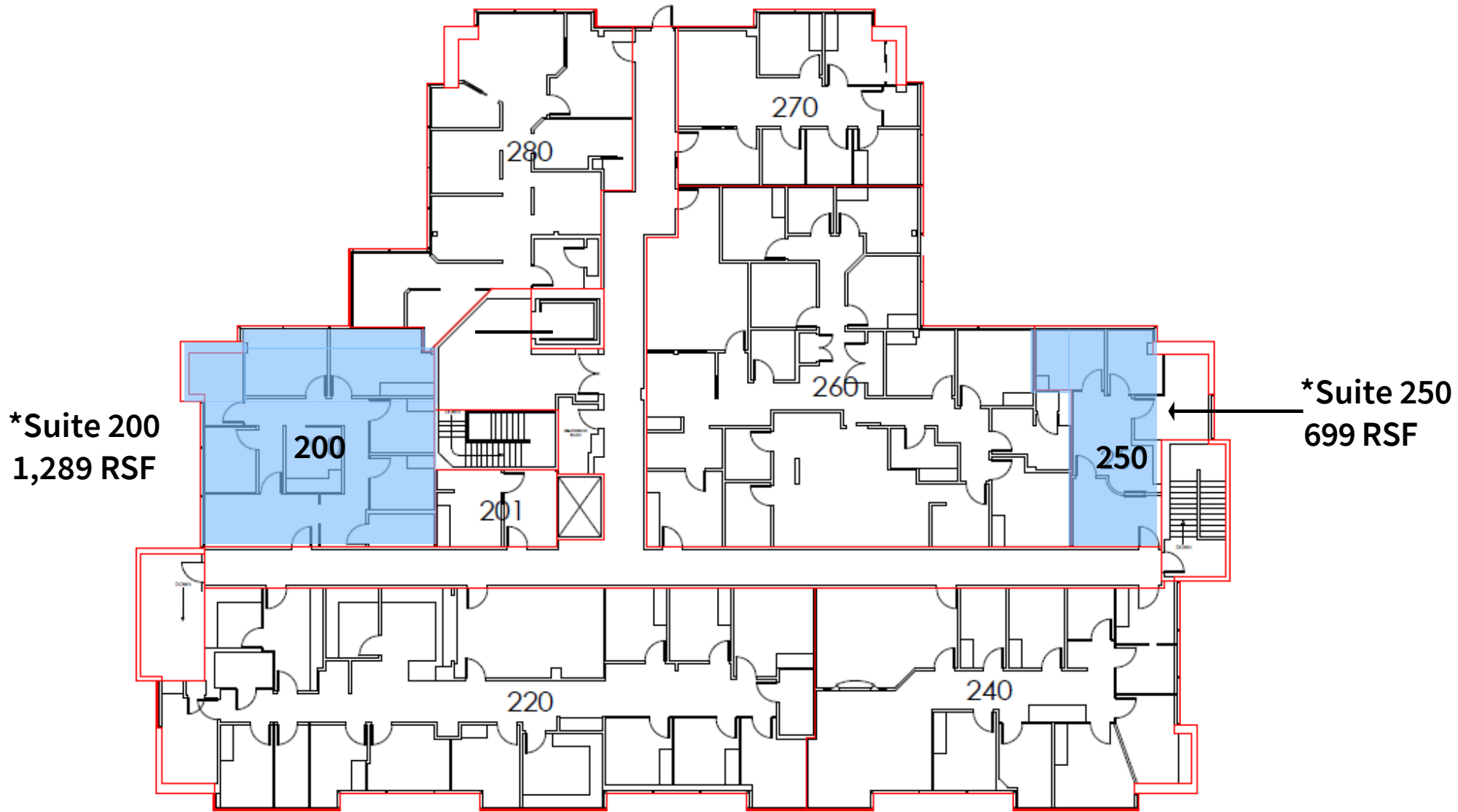
## Shell Ridge Medical Office Buildings

106, 108, 110, 112 La Casa Via, Walnut Creek

For more  
Information  
please contact

Trent Barmby  
+1 925.944.2151  
[trent.barmby@am.jll.com](mailto:trent.barmby@am.jll.com)  
RE License #01837549





## Shell Ridge Medical Office Buildings

106, 108, 110, 112, 114 La Casa Via, Walnut Creek

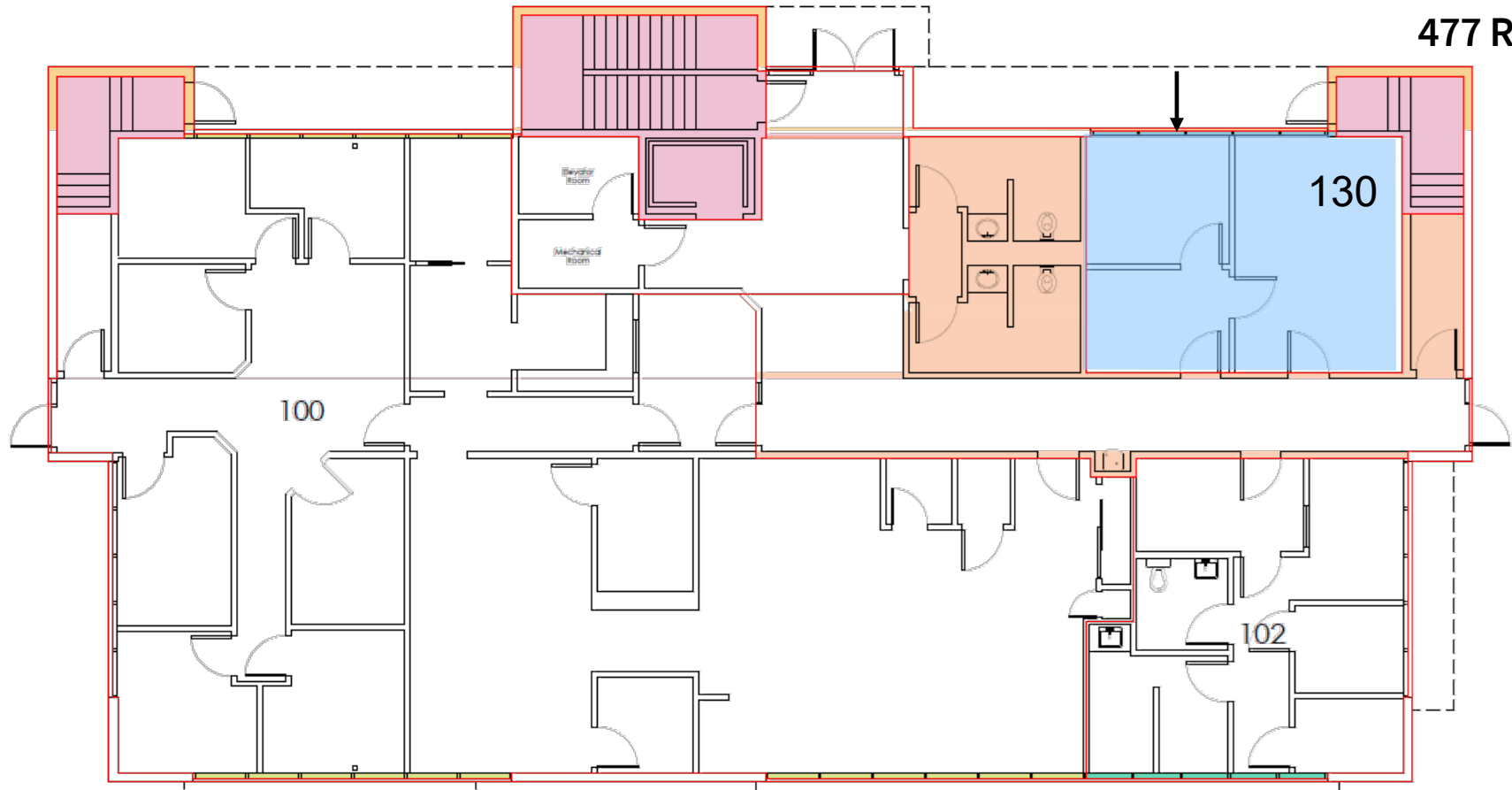
For more  
Information  
please contact

Trent Barmby  
+1 925.944.2151  
[trent.barmby@am.jll.com](mailto:trent.barmby@am.jll.com)  
RE License #01837549





**\*Suite 130**  
**477 RSF**



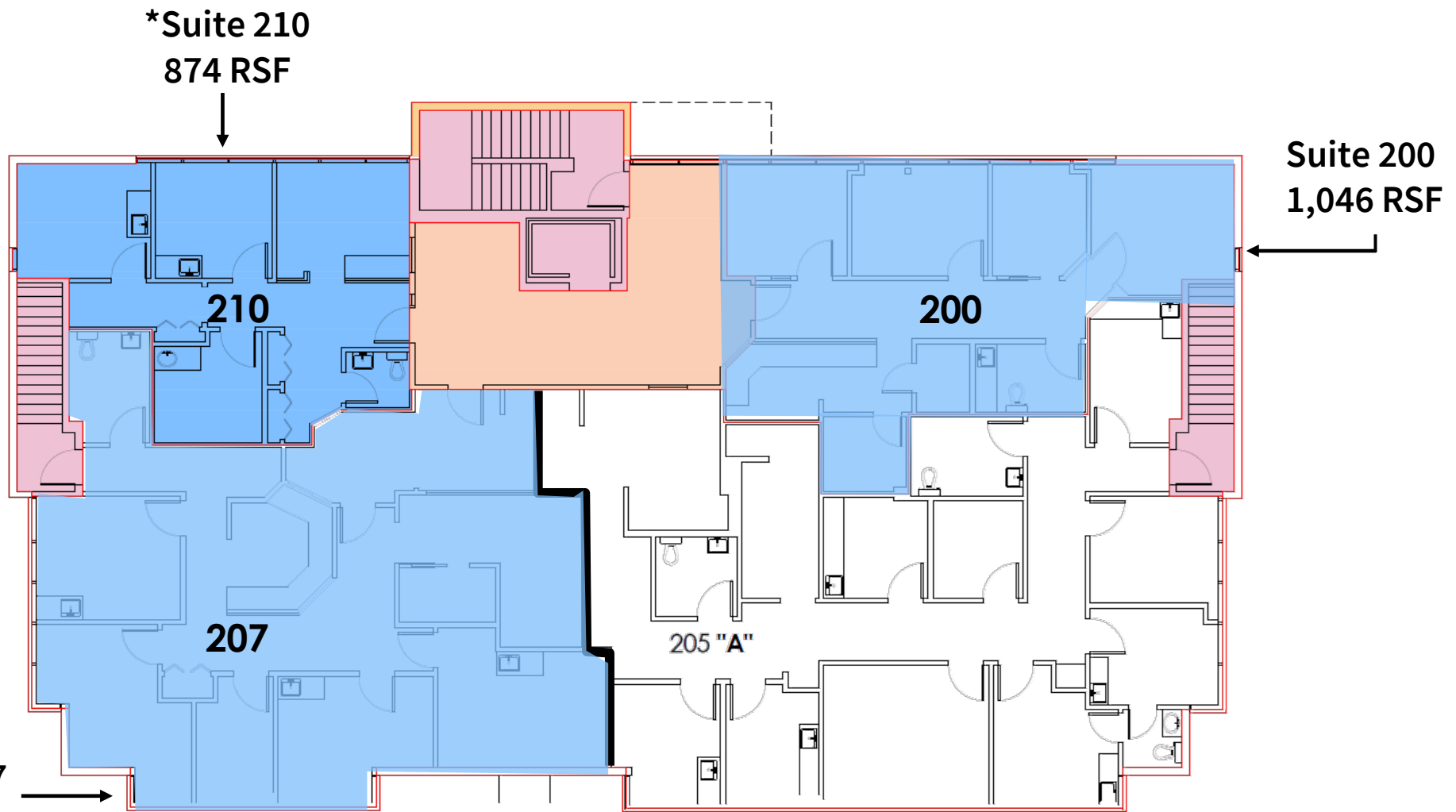
## Shell Ridge Medical Office Buildings

106, 108, 110, 112, 114 La Casa Via, Walnut Creek

For more  
Information  
please contact

Trent Barmby  
+1 925.944.2151  
[trent.barmby@am.jll.com](mailto:trent.barmby@am.jll.com)  
RE License #01837549





*\*Suites 207 and 210 can be combined for up to 2,123 RSF*

## Shell Ridge Medical Office Buildings

106, 108, 110, 112, 114 La Casa Via, Walnut Creek

For more  
Information  
please contact

Trent Barmby  
+1 925.944.2151  
[trent.barmby@am.jll.com](mailto:trent.barmby@am.jll.com)  
RE License #01837549





**\*Suite 132**

**571 RSF**

**\*Suite 130**

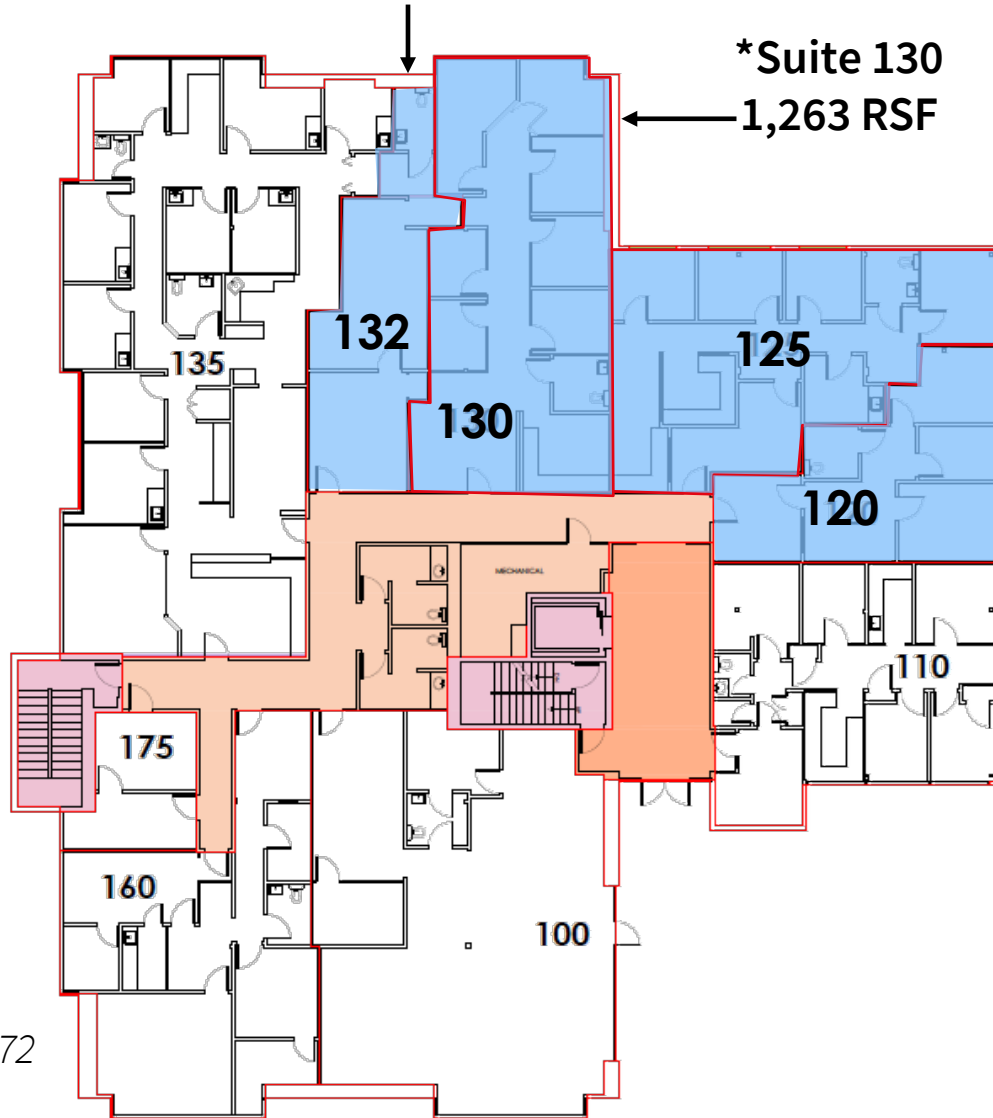
**1,263 RSF**

**\*Suite 125**

**1,252 RSF**

**\*Suite 120**

**752 RSF**



*\*Suites can be combined for spaces ranging from 571 to 6,572 RSF*

*Suites 130: In temporary use, until bldg. elevator completion. Est 3/1/24*

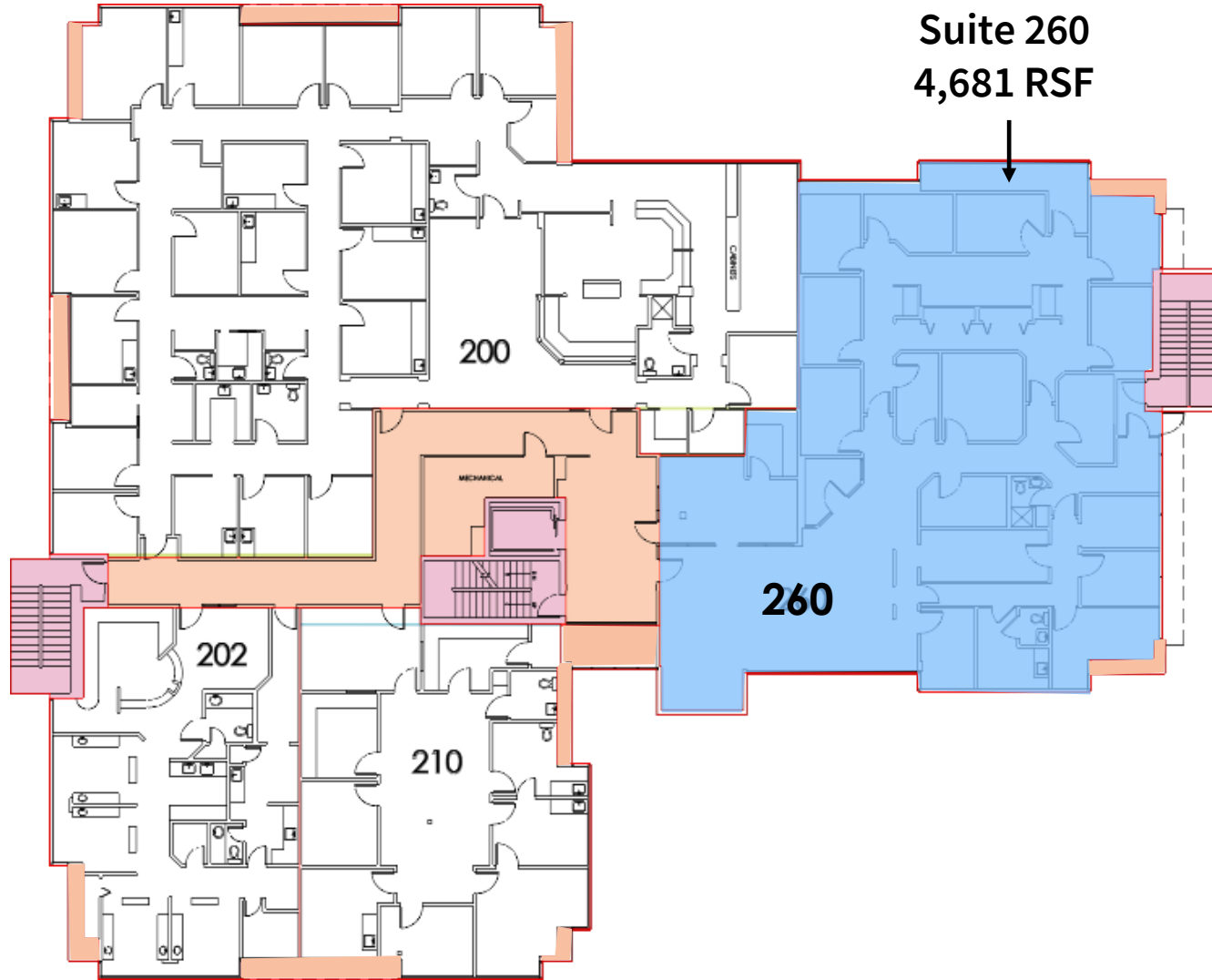
## Shell Ridge Medical Office Buildings

106, 108, 110, 112, 114 La Casa Via, Walnut Creek

For more Information please contact

Trent Barmby  
+1 925.944.2151  
[trent.barmby@am.jll.com](mailto:trent.barmby@am.jll.com)  
RE License #01837549





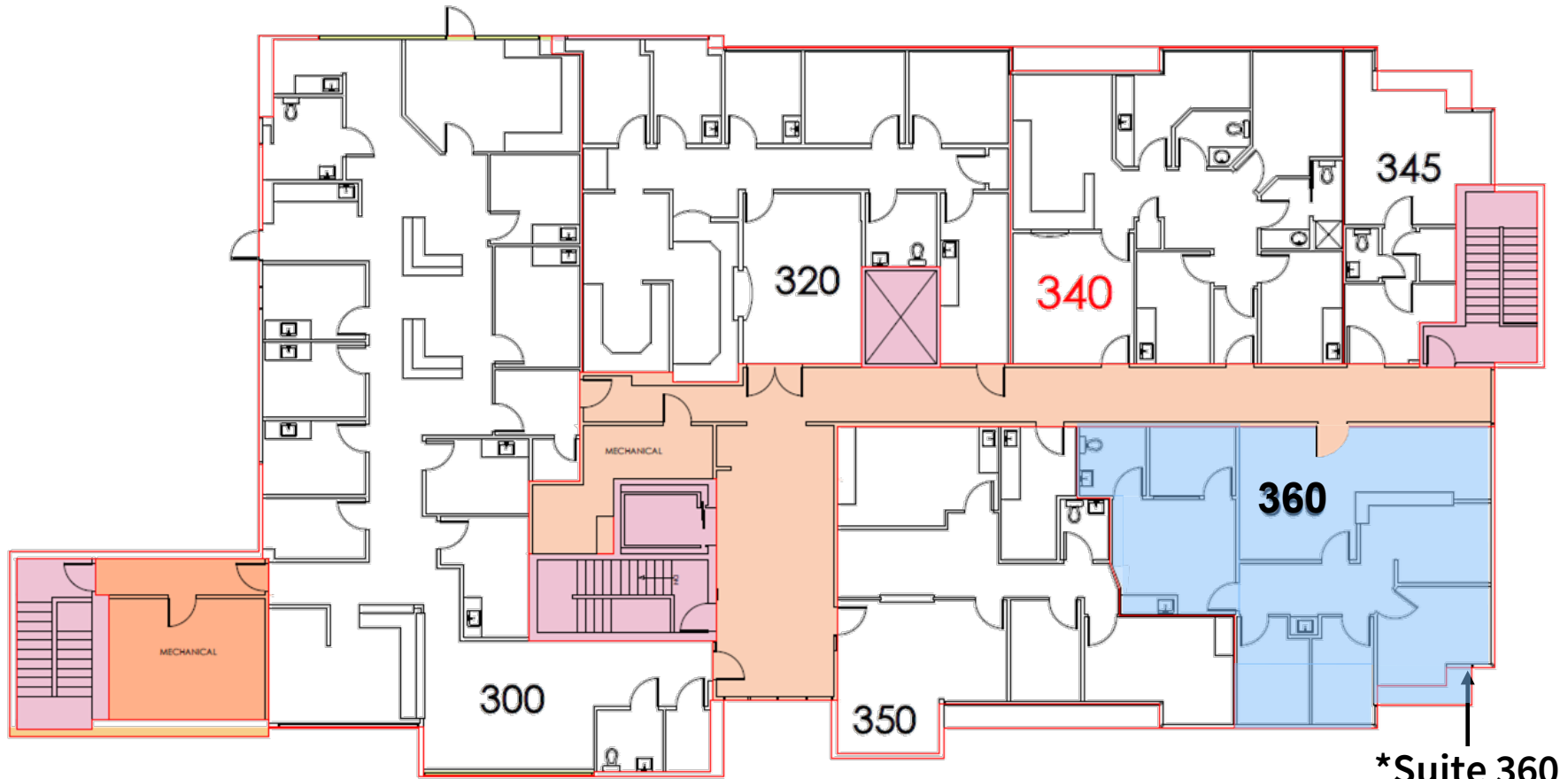
## Shell Ridge Medical Office Buildings

106, 108, 110, 112, 114 La Casa Via, Walnut Creek

For more  
Information  
please contact

Trent Barmby  
+1 925.944.2151  
[trent.barmby@am.jll.com](mailto:trent.barmby@am.jll.com)  
RE License #01837549





\*Suite 360  
1,578 RSF

## Shell Ridge Medical Office Buildings

106, 108, 110, 112, 114 La Casa Via, Walnut Creek

For more  
Information  
please contact

Trent Barmby  
+1 925.944.2151  
[trent.barmby@am.jll.com](mailto:trent.barmby@am.jll.com)  
RE License #01837549

