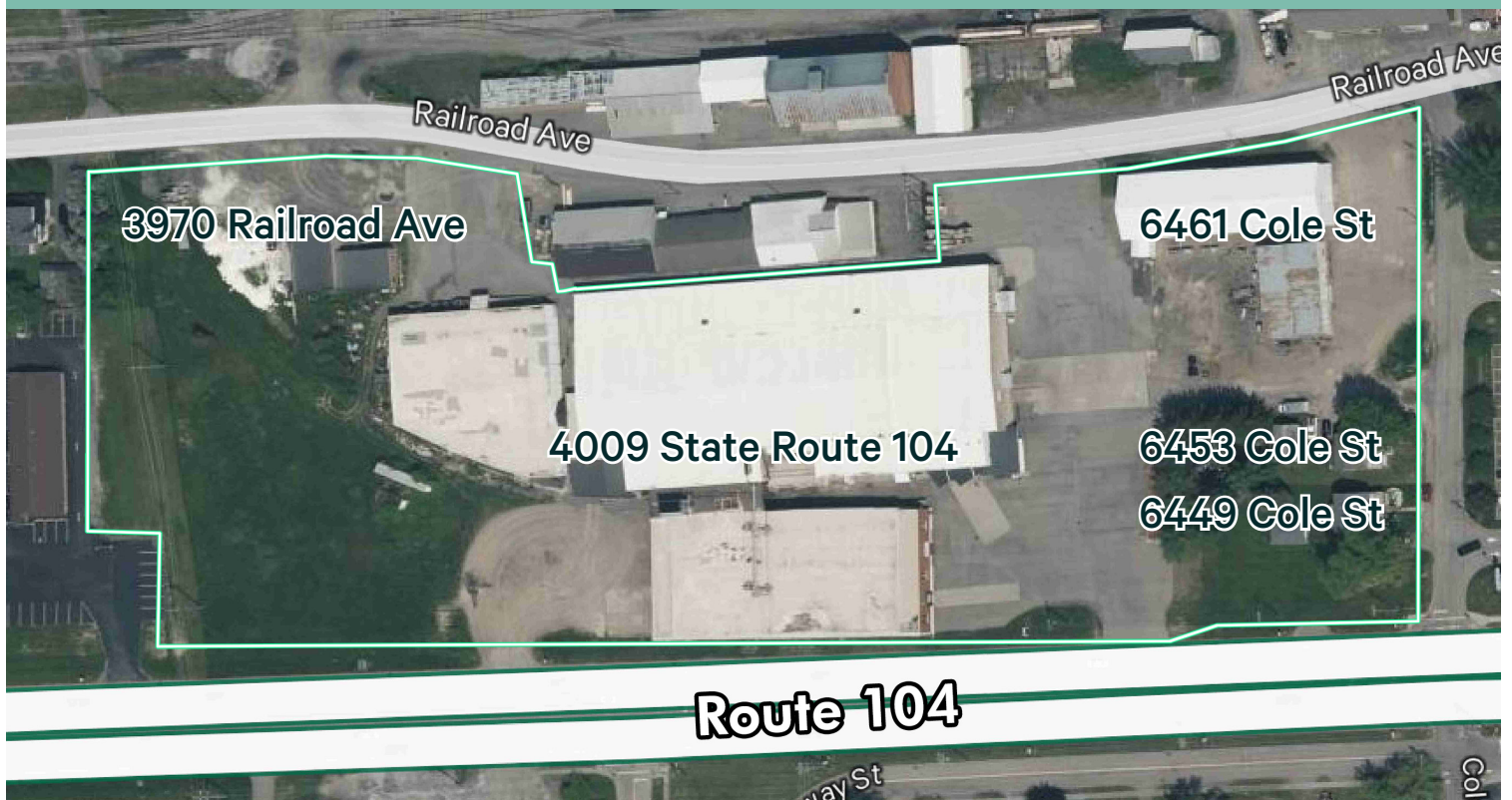


# Cold Storage Complex

Refrigerated and Freezer Space

4009 State Route 104  
3970 Railroad Ave  
6461, 6449, 6453 Cole St  
Williamson, NY 14589

Approximately 136,000 Square Feet of Cold Storage Space



## Offering Overview

Located on New York State Route 104 in the Town of Williamson, this eight building cold storage complex offers approximately 1.74 million cubic feet of refrigerated and frozen space. The property is well positioned to serve the needs of Wayne County's diverse agricultural production which includes orchards, vegetable farms, dairy farms, food/beverage manufacturing and nurseries.

## Offering Details

- + 142,953 Square Feet (Total)
- + Approximately 1.74 Million Cubic Feet of Refrigerated and Frozen Space
- + 8.63 Acres (6 Parcels)
- + Sale Price: \$3,100,000

# Property Overview

Address	Size	Description	Notes
4009 State Route 104	125,101 SF	Cold Storage Building (90,118sf)	<u>Cold Storage Building (90,118sf)</u> - 2 Floors, 400 amp electrical service, 6 ammonia cooling units, 12'-13' clear height in two-story areas, 22'-23' clear height in one-story areas. 975,672 cubic feet.
		Sub-Zero Building (21,223sf)	<u>Sub-Zero Building (21,223sf)</u> - Comprised of 4 sub zero (-2 F) storage units, 1 freight elevator, 4 ammonia cooling units, 17' clear height, 325,703 cubic feet.
		Cold Storage Building (13,760sf)	<u>Cold Storage Building (13,760sf)</u> - 200 amp electrical service, 1 ammonia cooling unit 15'-16' clear height, 208,110 cubic feet
3970 Railroad Ave	3,548 SF	Equipment Storage & Maintenance	100 amp electrical service, 3 overhead doors, oil furnace for heat
6461 Cole St	11,600 SF	Cold Storage Building (8,000sf)	<u>Cold Storage Building</u> - 3 overhead doors, 3 freon air-conditioning units provide cooling only, 24' clear, 192,000 cubic feet
		Service/ Cold Storage Building (3,600sf)	<u>Service Storage Building</u> - Building converted to cold storage. 200 amp electrical service, 3 overhead doors, 12' clear height 43,200 cubic feet
6453 Cole St	1,248 SF	Single Family Residential	2-story, 3 bedroom house built in 1940
6449 Cole St	1,456 SF	Single Family Residential	2-story, 3 bedroom house built in 1910

## Contact Us

### Harry Gleason, SIOR

+1 585 784 3639

harry.gleason@cbre-rochester.com

Licensed Associate Real Estate Broker

### Patrick Wahl

+1 585 784 3633

patrick.wahl@cbre-rochester.com

Licensed Real Estate Salesperson

© 2025 CBRE Upstate NY, part of the CBRE Affiliate Network. All rights reserved. This information has been obtained from sources believed reliable, but has not been verified for accuracy or completeness. You should conduct a careful, independent investigation of the property and verify all information. Any reliance on this information is solely at your own risk. CBRE Upstate NY and the CBRE Upstate NY logo are service marks of CBRE Upstate NY. All other marks displayed on this document are the property of their respective owners, and the use of such logos does not imply any affiliation with or endorsement of CBRE Upstate NY. Photos herein are the property of their respective owners. Use of these images without the express written consent of the owner is prohibited.

### CBRE Upstate NY

1350 University Ave, Suite 100

Rochester, NY 14607

+1 585 240 8080

www.cbre.com/rochester

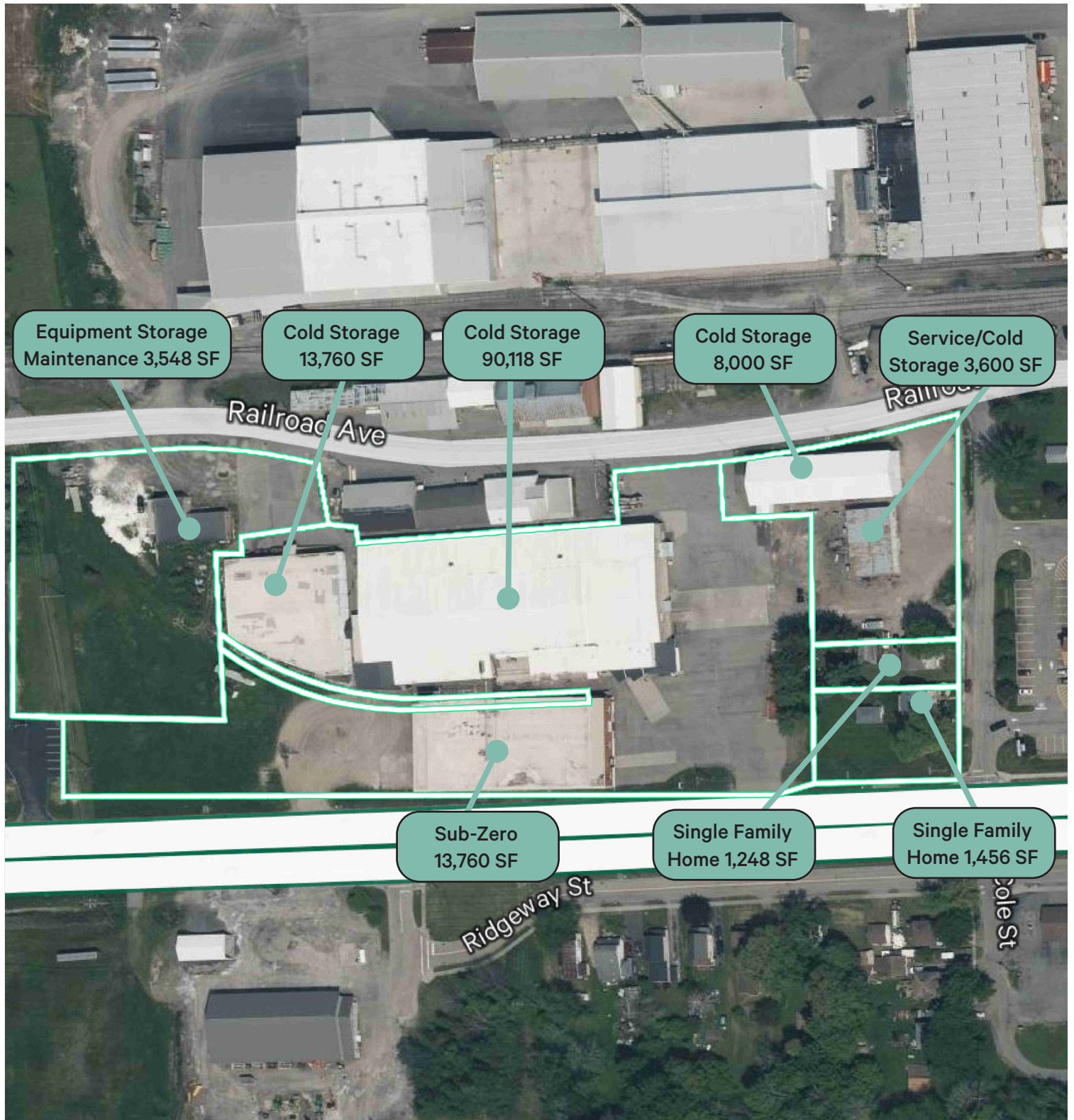
# CBRE Upstate NY

PART OF THE AFFILIATE NETWORK

# Cold Storage Space

4009 State Route 104 | Williamson, NY 14589

For Sale



## Contact Us

**Harry Gleason, SIOR**

+1 585 784 3639

[harry.gleason@cbre-rochester.com](mailto:harry.gleason@cbre-rochester.com)

Licensed Associate Real Estate Broker

**Patrick Wahl**

+1 585 784 3633

[patrick.wahl@cbre-rochester.com](mailto:patrick.wahl@cbre-rochester.com)

Licensed Real Estate Salesperson

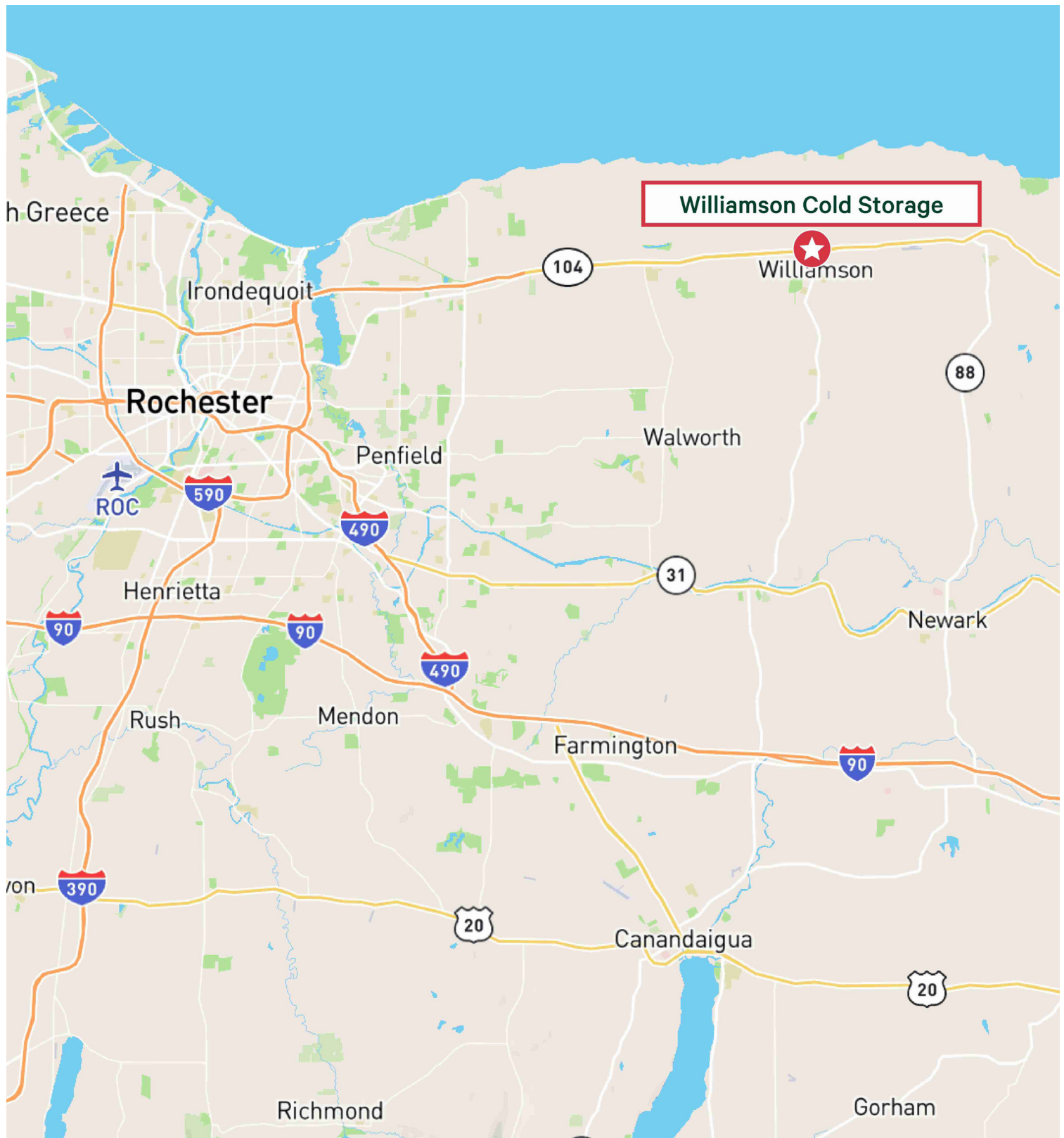
**CBRE Upstate NY**

PART OF THE AFFILIATE NETWORK

## Cold Storage Space

4009 State Route 104 | Williamson, NY 14589

# For Sale



## Contact Us

**Harry Gleason, SIOR**

+1 585 784 3639

[harry.gleason@cbre-rochester.com](mailto:harry.gleason@cbre-rochester.com)

Licensed Associate Real Estate Broker

**Patrick Wahl**

+1 585 784 3633

[patrick.wahl@cbre-rochester.com](mailto:patrick.wahl@cbre-rochester.com)

Licensed Real Estate Salesperson

# CBRE Upstate NY

PART OF THE AFFILIATE NETWORK