

FOR LEASE

8649 HAYDEN PL

CULVER CITY, CA 90232



Hayden tract flex industrial and creative office fully renovated in Culver City, CA

Unit 8649 - 3,200 SF available with 600 SF of existing office space

Clear height 23 feet

Office percentage 18.7% all upstairs

2 restrooms

New LED warehouse lighting & skylights

400 amps, 120-208 volts, 3Ø and 4W

Zoning CCM1*

Loading 1 dock-high

3,200

SF UNIT

\$3.30

PSF GROSS

\$0.07

PSF CAM

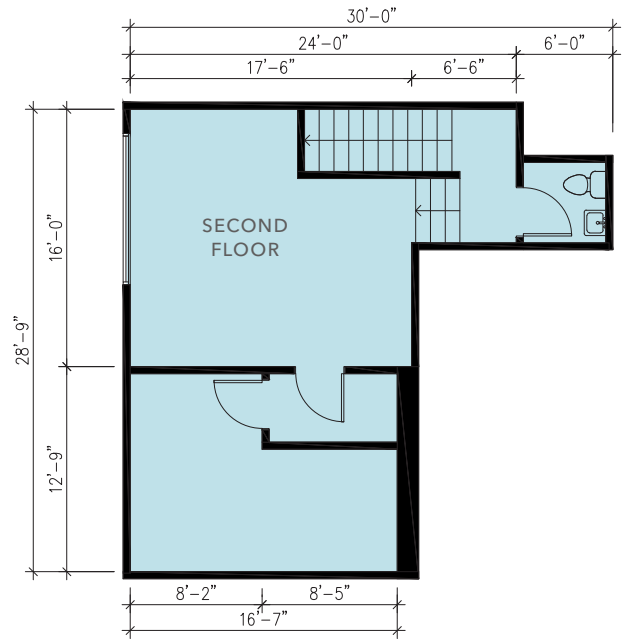
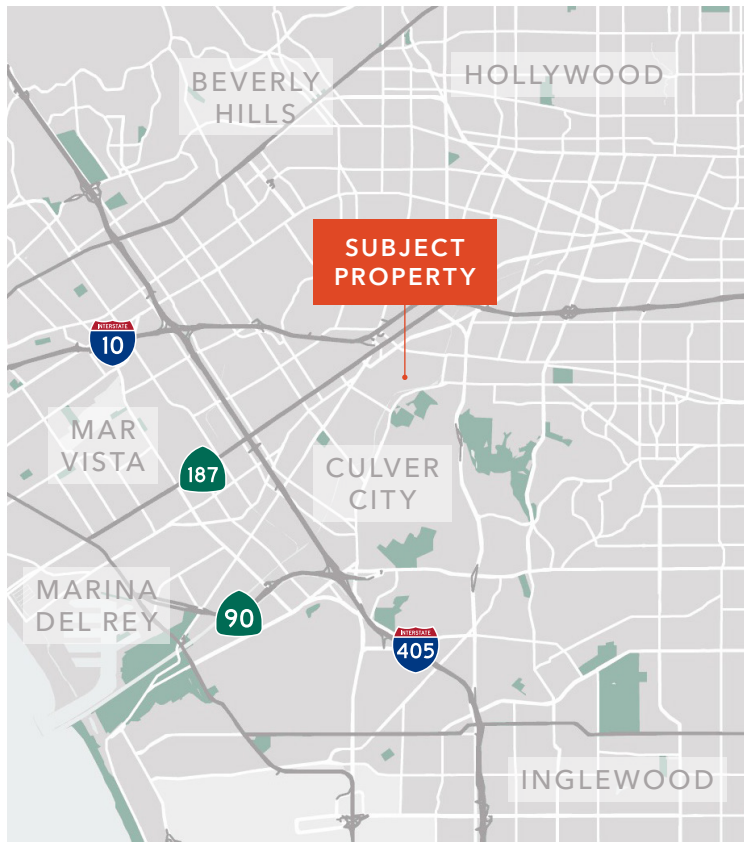
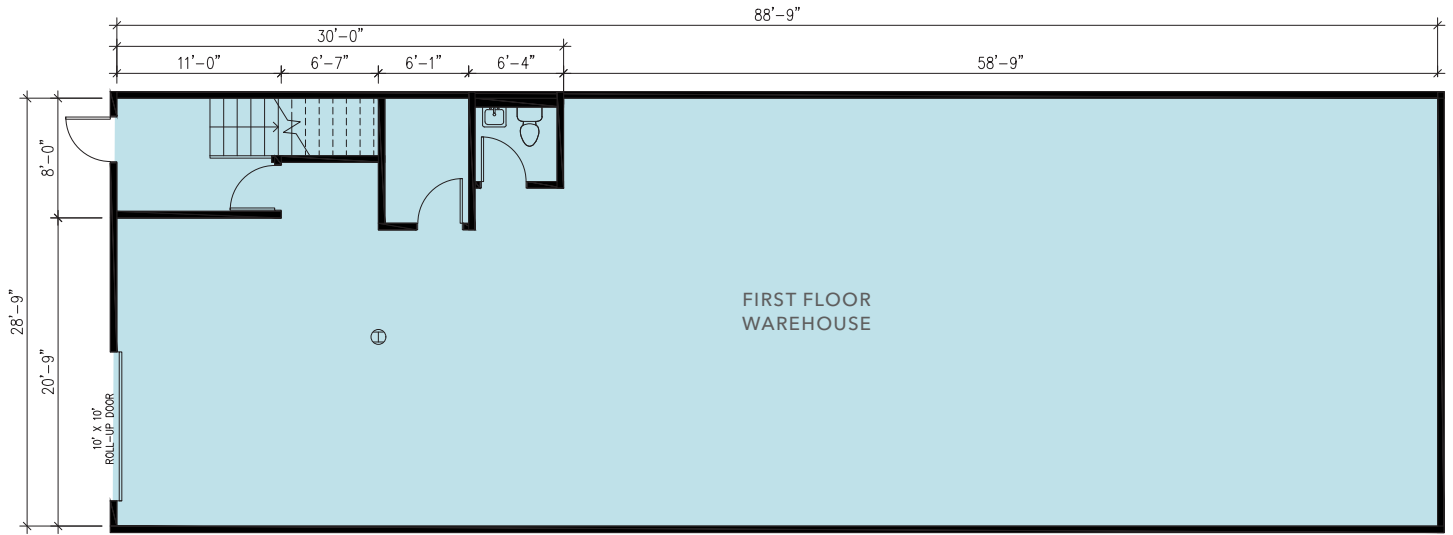
IAN STEVENSON
310.906.3277
ian.stevenson@kidder.com
LIC N° 02045140

KIDDER.COM

This information supplied herein is from sources we deem reliable. It is provided without any representation, warranty, or guarantee, expressed or implied as to its accuracy. Prospective Buyer or Tenant should conduct an independent investigation and verification of all matters deemed to be material, including, but not limited to, statements of income and expenses. Consult your attorney, accountant, or other professional advisor.

km Kidder Mathews

8649 HAYDEN PLACE



3,200 SF
WAREHOUSE

600 SF
WAREHOUSE

IAN STEVENSON
310.906.3277
ian.stevenson@kidder.com
LIC# 02045140

KIDDER.COM

This information supplied herein is from sources we deem reliable. It is provided without any representation, warranty, or guarantee, expressed or implied as to its accuracy. Prospective Buyer or Tenant should conduct an independent investigation and verification of all matters deemed to be material, including, but not limited to, statements of income and expenses. Consult your attorney, accountant, or other professional advisor.



