

LOT SIZES RANGING FROM 1 ACRE TO 15.39 ACRES



ESMERALDA COMMERCE PARK

**FREYA ST & GARLAND AVE
SPOKANE, WA 99207**

11 LOTS AVAILABLE

**OPEN
LISTING
FOR ALL
BROKERS**

Features

New 40' Wide Roads

Wide Sidewalks & Landscaping

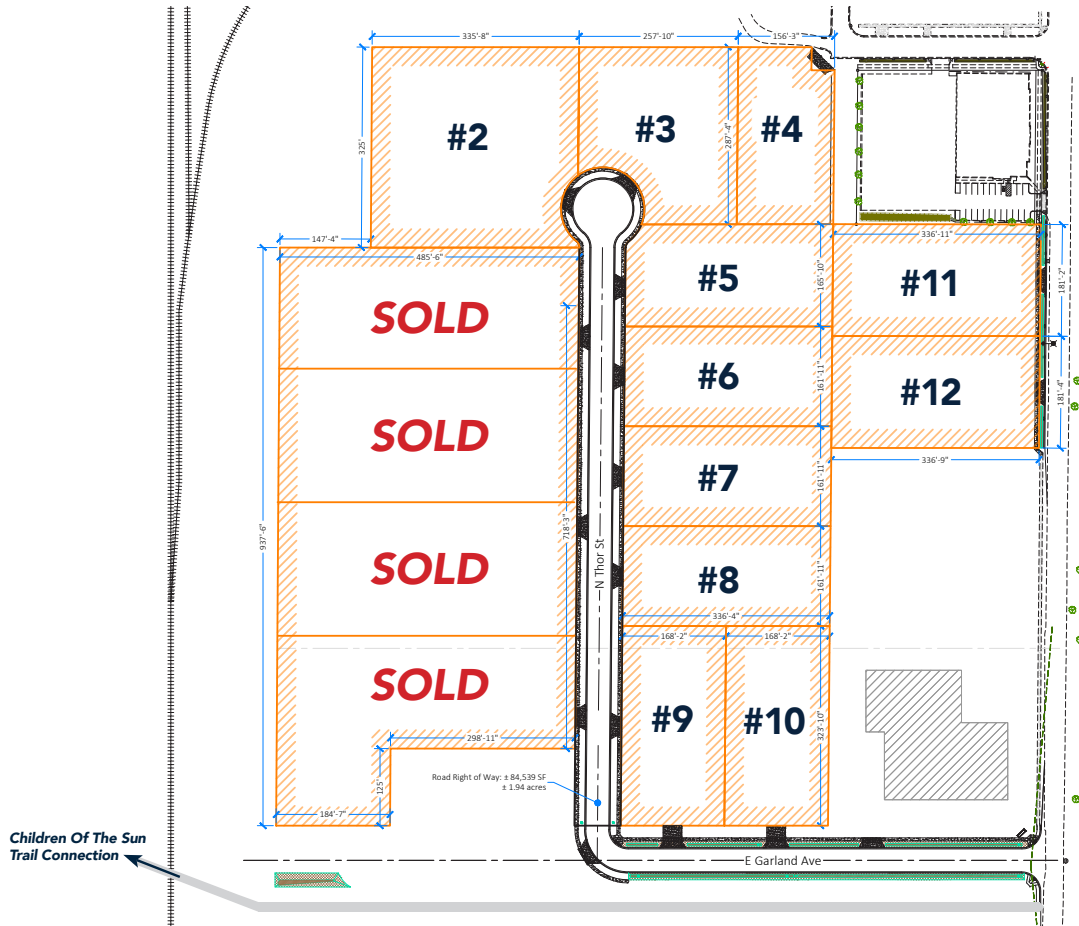
Ample Lighting

Available Utilities To Parcels

- Sewer
- Water
- Electric
- Communication
- Gas

LOT SIZES RANGING FROM 1 ACRE TO 15.39 ACRES

FLOOR PLAN



Available Property Details (Lots Can Be Combined)

Lot #2: ± 108,386 SF | ± 2.49 acres

Lot #3: ± 66,201 SF | ± 1.53 acres

Lot #4: ± 44,985 SF | ± 1.03 acre

Lot #5: ± 54,650 SF | ± 1.25 acres

Lot #6: ± 54,781 SF | ± 1.26 acres

Lot #7: ± 54,753 SF | ± 1.26 acres

Lot #8: ± 54,726 SF | ± 1.26 acres

Lot #9: ± 54,969 SF | ± 1.26 acres

Lot #10: ± 54,672 SF | ± 1.26 acres

Lot #11: ± 61,062 SF | ± 1.40 acres

Lot #12: ± 61,043 SF | ± 1.40 acres

LOT SIZES RANGING FROM 1 ACRE TO 15.39 ACRES

IMAGES



Features

- 10 minutes from Interstate 90
- 15 minutes to North Division "Y"
- 15 minutes to Downtown Spokane
- 20 minutes to Spokane International Airport

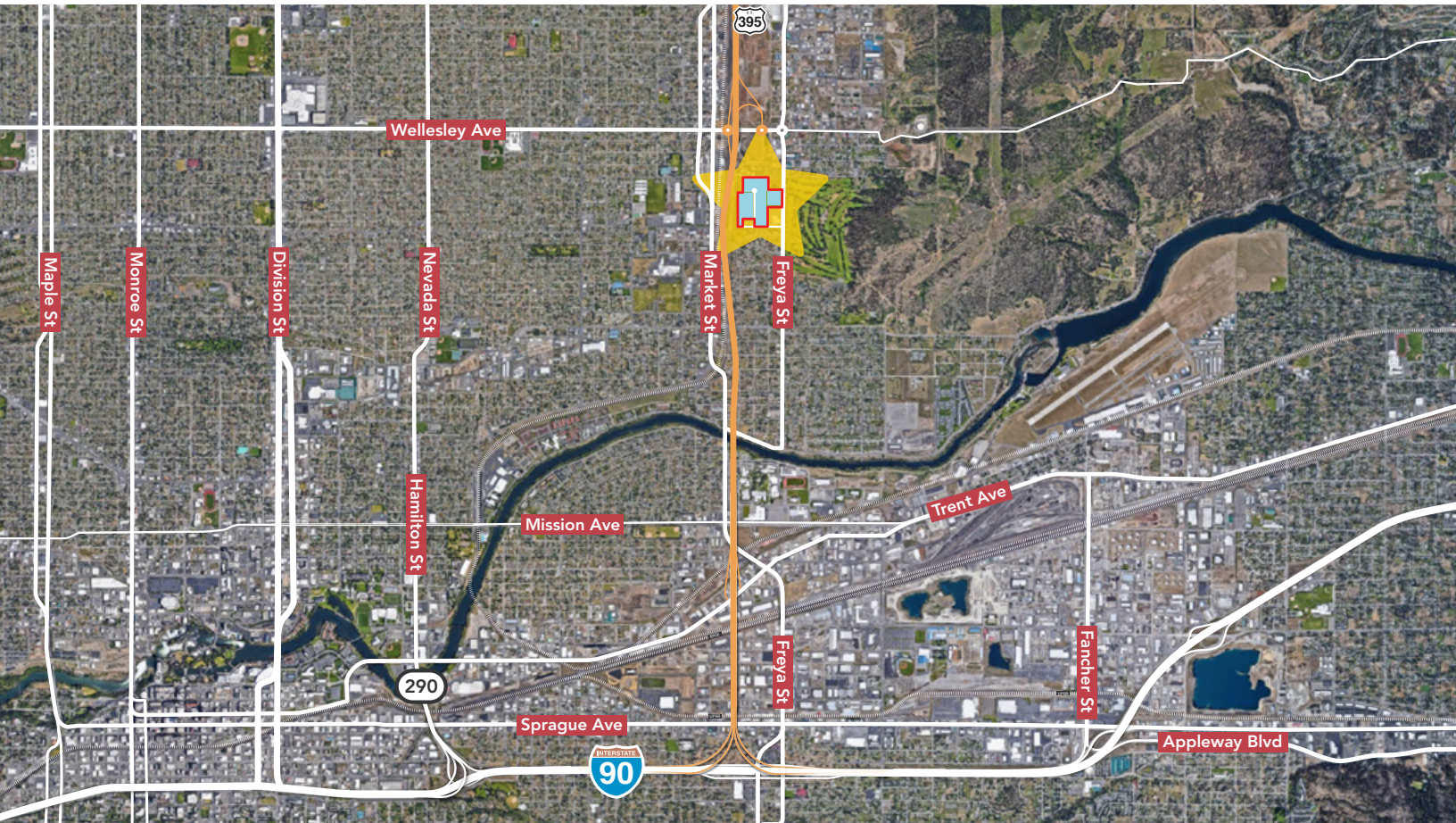
LOT SIZES RANGING FROM 1 ACRE TO 15.39 ACRES


IMAGES



LOT SIZES RANGING FROM 1 ACRE TO 15.39 ACRES

MAP



 — Future US 395 - North Spokane Corridor

THE BENEFITS OF ESMERALDA

DID YOU KNOW...

TOP 100 Metropolitan Statistical Area (MSA)

TOP 75 Combined Statistical Area (CSA)

NEW ROADS AND INFRASTRUCTURE

Streets are extra wide with LED street lights, sidewalks and landscaping on both sides.

POWER All parcels have 480V 3 Phase power underground.

UTILITIES Water, sewer, gas lines installed to all lots.

