

FLORIDA STATE ROAD 20  
(PUBLIC R/W WIDTH VARIES)

LEGEND:

- # = NUMBER
- = DISTANCE NOT TO SCALE
- L.B. = LICENSED BUSINESS
- L.S. = LICENSED SURVEYOR
- P.S.M. = PROFESSIONAL SURVEYOR AND MAPPER
- O.R. = OFFICIAL RECORDS
- ± = MORE OR LESS
- R/W = RIGHT OF WAY
- ⊙ = CENTERLINE
- R = RADIUS
- A = ARC LENGTH
- Δ = DELTA ANGLE
- CB = CHORD BEARING
- C = CHORD
- ☐ = TELEPHONE SERVICE BOX
- ☐ = SANITARY SEWER MANHOLE
- ☐ = STORM DRAINAGE MANHOLE
- ⊕ = WATER VALVE
- ⊕ = TELEVISION SERVICE BOX
- ⊕ = WATER METER
- ⊕ = POWER POLE
- ⊕ = LIGHT POLE
- ⊕ = AIR CONDITIONER
- ⊕ = POWER POLE AND GUY ANCHOR
- ⊕ = ROAD SIGN
- RCP = REINFORCED CONCRETE PIPE
- CMP = CORRUGATED METAL PIPE
- PCPP = PERFORATED CORRUGATED PLASTIC PIPE
- ☐ = SET 4"x4" CONCRETE MONUMENT, L.B. #3501
- = FOUND 4"x4" CONCRETE MONUMENT, L.B. #3501
- ⊗ = FOUND 4"x4" CONCRETE MONUMENT, NO IDENTIFICATION
- ⊗ = SET 1/2" CAPPED IRON ROD, L.B. #3501
- = FOUND 1/2" CAPPED IRON ROD, L.B. #3501
- ⊕ = FOUND 1/2" CAPPED IRON ROD, NO IDENTIFICATION
- O.R. = OFFICIAL RECORDS
- = TELEPHONE CABLE
- = FIBER-OPTIC CABLE
- = ELECTRIC CABLE
- = GAS MAIN
- = OVERHEAD UTILITIES
- = WATER LINE
- = FORCE MAIN
- = WETLANDS
- ⊕ = LAMP POST
- F.M. = FORCE MAIN
- ⊕ = TRAFFIC CONTROL BOX
- ⊕ = FIBER-OPTIC MARKER
- CONC. = CONCRETE
- PGS. = PAGES
- E.P.A. = ENVIRONMENTAL PROTECTION AREA
- FDOT = FLORIDA DEPARTMENT OF TRANSPORTATION
- AC. = ACRES
- (CE) = CONSERVATION EASEMENT DATA
- LS = LIFT STATION
- = DESCRIPTION REFERENCE TO FDOT STATIONING ALONG STATE ROAD 20
- ALTA = AMERICAN LAND TITLE ASSOCIATION
- ACSM = AMERICAN CONGRESS ON SURVEYING AND MAPPING
- NSPS = NATIONAL SOCIETY OF PROFESSIONAL SURVEYORS
- P.B. = PLAT BOOK
- (PD) = PREVIOUS DESCRIPTION DATA
- (F) = FIELD MEASURED DATA
- (C) = CALCULATED DATA

**Gustin, Cothorn & Tucker, Inc.**  
LAND SURVEYING  
Nicoville, FL 32278  
121 Hart Street  
Fax: (850) 729-2460  
L.B. No. 3501  
www.gct-survey.com

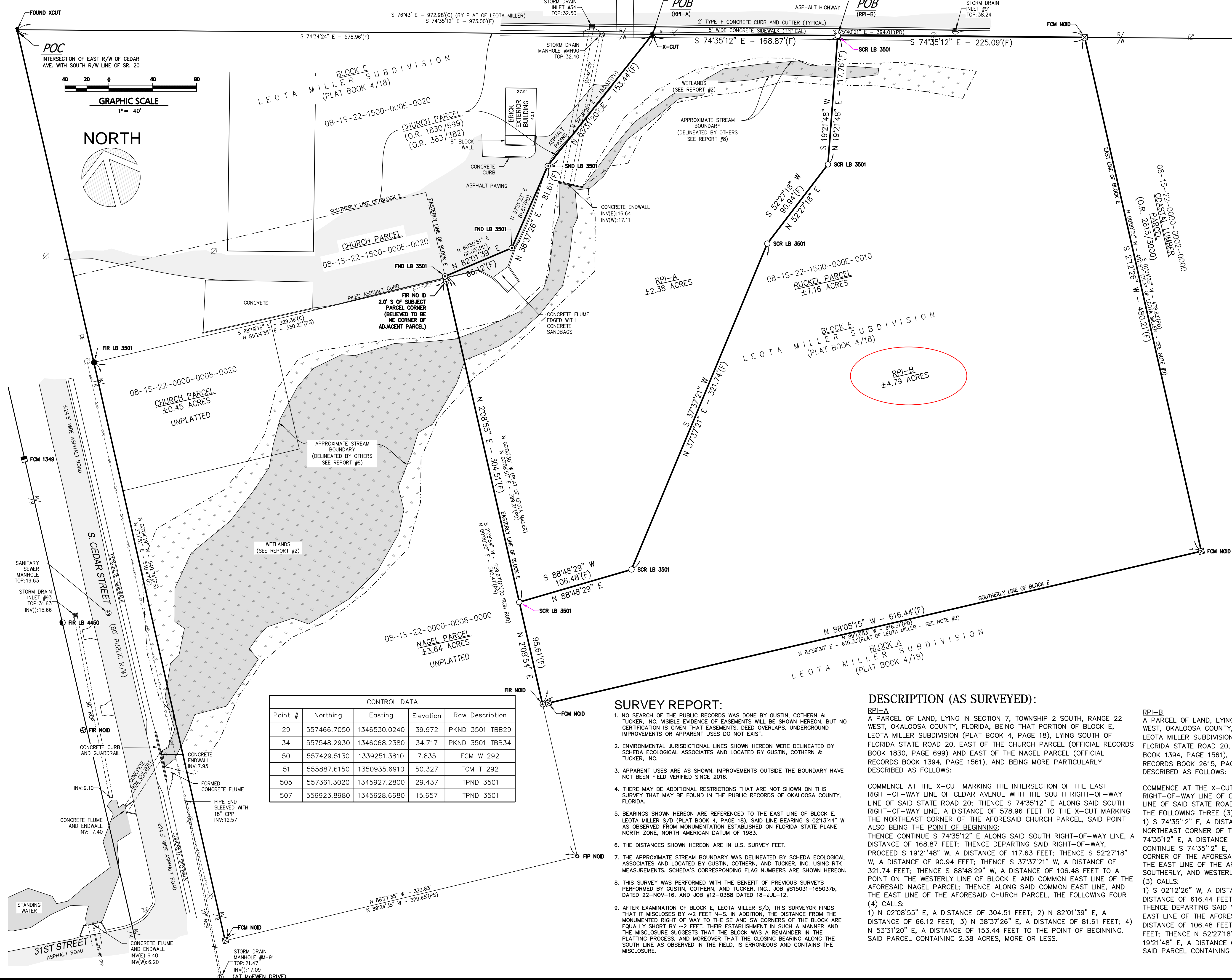
NOT VALID WITHOUT THE SIGNATURE AND THE ORIGINAL RAISED SEAL OF A FLORIDA LICENSED SURVEYOR AND MAPPER  
G.C.T. INC. 08/07

ALLEN E. TUCKER, P.S.M. No. 4584  
HORACE WAYNE WALKER, JR., P.S.M. No. 5029  
JOSHUA P. WOOD, P.S.M. No. 6980  
DATE: 1 AUG 2017

REPAIRS AT THOMAS BRANCH IN SECTION 7, TOWNSHIP 2 SOUTH, RANGE 22 WEST, OKALOOSA COUNTY, FLORIDA

CUSTOMER: ANCON  
SURVEY TYPE: BOUNDARY  
SURVEY DATE: 2 AUG 2017  
F.B. NO.:  
HORIZONTAL: NAD 83  
VERTICAL: NAD 83

SHEET 1 OF 1  
170405  
INDEX  
170405.02



Point #	Northing	Easting	Elevation	Raw Description
29	557466.7050	1346530.0240	39.972	PKND 3501 TBB29
34	557548.2930	1346068.2380	34.717	PKND 3501 TBB34
50	557429.5130	1339251.3810	7.835	FCM W 292
51	555887.6150	1350935.6910	50.327	FCM T 292
505	557361.3020	1345927.2800	29.437	TPND 3501
507	556923.8980	1345628.6680	15.657	TPND 3501

SURVEY REPORT:

- NO SEARCH OF THE PUBLIC RECORDS WAS DONE BY GUSTIN, COTHERN & TUCKER, INC. VISIBLE EVIDENCE OF EASEMENTS WILL BE SHOWN HEREON, BUT NO CERTIFICATION IS GIVEN THAT EASEMENTS, DEED OVERLAPS, UNDERGROUND IMPROVEMENTS OR APPARENT USES DO NOT EXIST.
- ENVIRONMENTAL JURISDICTIONAL LINES SHOWN HEREON WERE DELINEATED BY SCHEDA ECOLOGICAL ASSOCIATES AND LOCATED BY GUSTIN, COTHERN & TUCKER, INC.
- APPARENT USES ARE AS SHOWN. IMPROVEMENTS OUTSIDE THE BOUNDARY HAVE NOT BEEN FIELD VERIFIED SINCE 2016.
- THERE MAY BE ADDITIONAL RESTRICTIONS THAT ARE NOT SHOWN ON THIS SURVEY THAT MAY BE FOUND IN THE PUBLIC RECORDS OF OKALOOSA COUNTY, FLORIDA.
- BEARINGS SHOWN HEREON ARE REFERENCED TO THE EAST LINE OF BLOCK E, LEOTA MILLER S/D (PLAT BOOK 4, PAGE 18). SAID LINE BEARING S 02°13'44" W AS OBSERVED FROM MONUMENTATION ESTABLISHED ON FLORIDA STATE PLANE NORTH ZONE, NORTH AMERICAN DATUM OF 1983.
- THE DISTANCES SHOWN HEREON ARE IN U.S. SURVEY FEET.
- THE APPROXIMATE STREAM BOUNDARY WAS DELINEATED BY SCHEDA ECOLOGICAL ASSOCIATES AND LOCATED BY GUSTIN, COTHERN, AND TUCKER, INC. USING RTK MEASUREMENTS. SCHEDA'S CORRESPONDING FLAG NUMBERS ARE SHOWN HEREON.
- THIS SURVEY WAS PERFORMED WITH THE BENEFIT OF PREVIOUS SURVEYS PERFORMED BY GUSTIN, COTHERN, AND TUCKER, INC., JOB #S15031-165037b, DATED 22-NOV-16, AND JOB #12-0388 DATED 18-JUL-12.
- AFTER EXAMINATION OF BLOCK E, LEOTA MILLER S/D, THIS SURVEYOR FINDS THAT IT MISCLOSES BY ~2 FEET N-S. IN ADDITION, THE DISTANCE FROM THE MONUMENTED RIGHT OF WAY TO THE SE AND SW CORNERS OF THE BLOCK ARE EQUALLY SHORT BY ~2 FEET. THEIR ESTABLISHMENT IN SUCH A MANNER AND THE MISCLASURE SUGGESTS THAT THE BLOCK WAS A REMAINDER IN THE PLATTING PROCESS, AND MOREOVER THAT THE CLOSING BEARING ALONG THE SOUTH LINE AS OBSERVED IN THE FIELD, IS ERRONEOUS AND CONTAINS THE MISCLASURE.

DESCRIPTION (AS SURVEYED):

**RPI-A**  
A PARCEL OF LAND, LYING IN SECTION 7, TOWNSHIP 2 SOUTH, RANGE 22 WEST, OKALOOSA COUNTY, FLORIDA, BEING THAT PORTION OF BLOCK E, LEOTA MILLER SUBDIVISION (PLAT BOOK 4, PAGE 18), LYING SOUTH OF FLORIDA STATE ROAD 20, EAST OF THE CHURCH PARCEL (OFFICIAL RECORDS BOOK 1830, PAGE 699) AND EAST OF THE NAGEL PARCEL (OFFICIAL RECORDS BOOK 1394, PAGE 1561), AND BEING MORE PARTICULARLY DESCRIBED AS FOLLOWS:  
COMMENCE AT THE X-CUT MARKING THE INTERSECTION OF THE EAST RIGHT-OF-WAY LINE OF CEDAR AVENUE WITH THE SOUTH RIGHT-OF-WAY LINE OF SAID STATE ROAD 20; THENCE S 74°35'12" E ALONG SAID SOUTH RIGHT-OF-WAY LINE, A DISTANCE OF 578.96 FEET TO THE X-CUT MARKING THE NORTHEAST CORNER OF THE AFORESAID CHURCH PARCEL, SAID POINT ALSO BEING THE POINT OF BEGINNING;  
THENCE CONTINUE S 74°35'12" E ALONG SAID SOUTH RIGHT-OF-WAY LINE, A DISTANCE OF 168.87 FEET; THENCE DEPARTING SAID RIGHT-OF-WAY, PROCEED S 19°21'48" E, A DISTANCE OF 117.76 FEET; THENCE S 52°27'18" W, A DISTANCE OF 90.94 FEET; THENCE S 37°37'21" W, A DISTANCE OF 321.74 FEET; THENCE S 88°48'29" W, A DISTANCE OF 106.48 FEET TO A POINT ON THE WESTERLY LINE OF BLOCK E AND COMMON EAST LINE OF THE AFORESAID NAGEL PARCEL; THENCE ALONG SAID COMMON EAST LINE, AND THE EAST LINE OF THE AFORESAID CHURCH PARCEL, THE FOLLOWING FOUR (4) CALLS:  
1) N 02°08'55" E, A DISTANCE OF 304.51 FEET; 2) N 82°01'39" E, A DISTANCE OF 66.12 FEET; 3) N 38°37'26" E, A DISTANCE OF 81.61 FEET; 4) N 53°31'20" E, A DISTANCE OF 153.44 FEET TO THE POINT OF BEGINNING. SAID PARCEL CONTAINING 2.38 ACRES, MORE OR LESS.

**RPI-B**  
A PARCEL OF LAND, LYING IN SECTION 7, TOWNSHIP 2 SOUTH, RANGE 22 WEST, OKALOOSA COUNTY, FLORIDA, BEING THAT PORTION OF BLOCK E, LEOTA MILLER SUBDIVISION (PLAT BOOK 4, PAGE 18), LYING SOUTH OF FLORIDA STATE ROAD 20, EAST OF THE NAGEL PARCEL (OFFICIAL RECORDS BOOK 1394, PAGE 1561), WEST OF THE COASTAL LUMBER PARCEL (OFFICIAL RECORDS BOOK 2615, PAGE 3000) AND BEING MORE PARTICULARLY DESCRIBED AS FOLLOWS:  
COMMENCE AT THE X-CUT MARKING THE INTERSECTION OF THE EAST RIGHT-OF-WAY LINE OF CEDAR AVENUE WITH THE SOUTH RIGHT-OF-WAY LINE OF SAID STATE ROAD 20; THENCE ALONG SAID RIGHT-OF-WAY LINE, THE FOLLOWING THREE (3) CALLS:  
1) S 74°35'12" E, A DISTANCE OF 578.96 FEET TO THE X-CUT MARKING THE NORTHEAST CORNER OF THE AFORESAID CHURCH PARCEL; 2) CONTINUE S 74°35'12" E, A DISTANCE OF 168.87 FEET TO THE POINT OF BEGINNING; 3) CONTINUE S 74°35'12" E, A DISTANCE OF 225.09 FEET TO THE NORTHWEST CORNER OF THE AFORESAID COASTAL LUMBER PARCEL, SAID POINT LYING ON THE EAST LINE OF THE AFORESAID BLOCK E; THENCE ALONG THE EAST, SOUTHERLY, AND WESTERLY LINES OF SAID BLOCK E, THE FOLLOWING THREE (3) CALLS:  
1) S 02°12'26" W, A DISTANCE OF 480.21 FEET; 2) N 88°05'15" W, A DISTANCE OF 616.44 FEET; 3) N 02°08'54" E, A DISTANCE OF 95.61 FEET; THENCE DEPARTING SAID WESTERLY LINE OF BLOCK E AND THE COMMON EAST LINE OF THE AFORESAID NAGEL PARCEL, PROCEED N 88°48'29" E, A DISTANCE OF 106.48 FEET; THENCE N 37°37'21" E, A DISTANCE OF 321.74 FEET; THENCE N 52°27'18" E, A DISTANCE OF 90.94 FEET; THENCE N 19°21'48" E, A DISTANCE OF 117.76 FEET TO THE POINT OF BEGINNING. SAID PARCEL CONTAINING 4.79 ACRES, MORE OR LESS.