

1229 W. Washington Blvd Ste 100
2nd Gen Dental Space

DENTAL SPACE PROPERTY FOR LEASE



1229 W. Washington Blvd Ste 100

Dental Space

Available Spaces

Suite	Tenant	Size SF	Lease Type	Lease Rate	Description
Suite 100	Available	3,087 SF	NNN	\$50.00 SF/yr	Ground-floor suite in professional building. Built out for dental; move-in ready. 4 equipped operatories with space for 3 more operatories, sterilization room, lab, break room, patient waiting area. Ideal for general dentistry, specialists, or medical use.



1229 W. Washington Blvd Ste 100

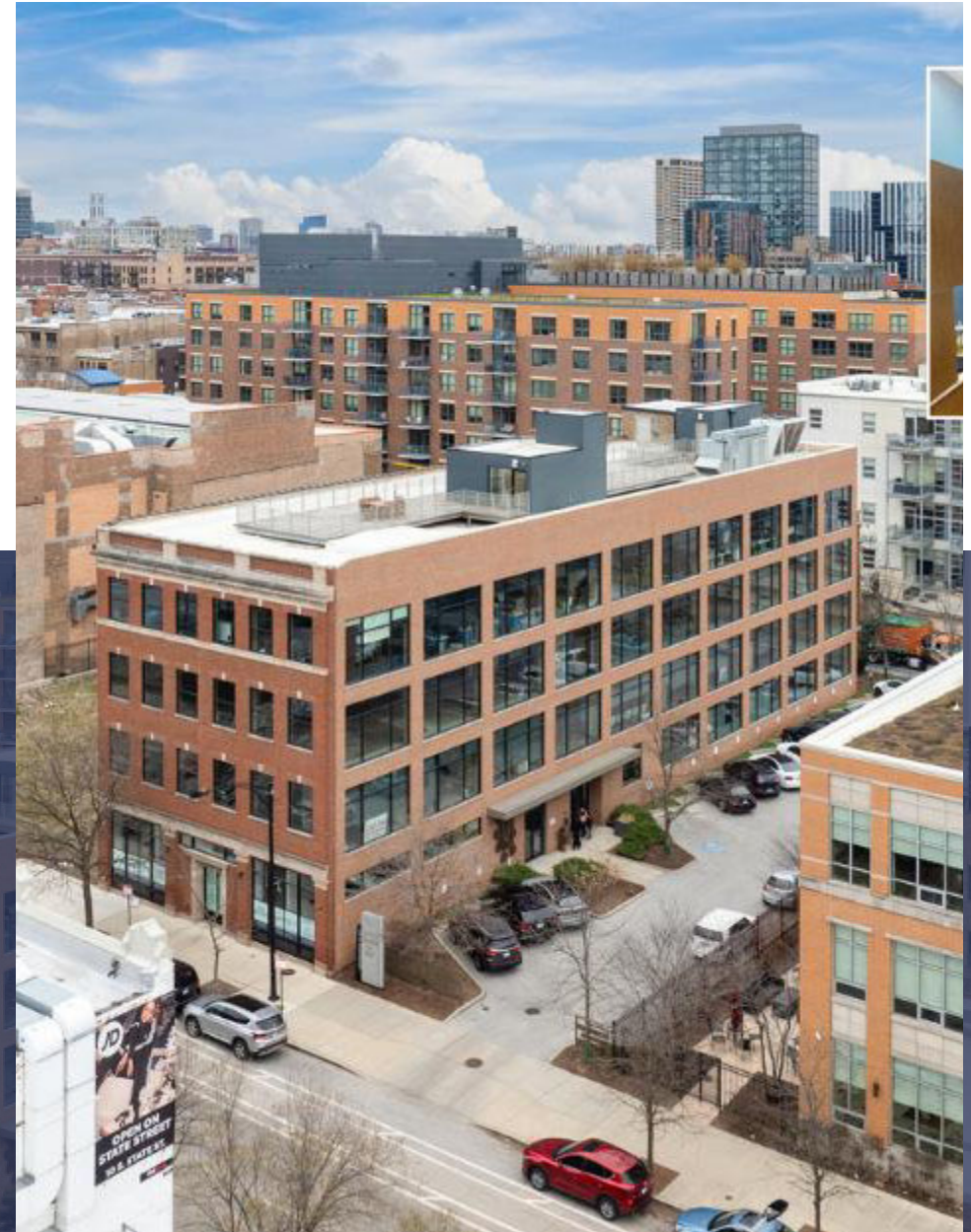
Dental Space

Demographics Map and Report

PROPERTY DESCRIPTION

Exceptional opportunity to lease a fully built-out dental office in a prestigious medical office building in West Loop. This turnkey space is in excellent condition, thoughtfully designed for dental or other medical use, and features a modern layout that supports efficient patient flow. Surrounded by high-quality medical and professional co-tenants, the building offers a collaborative and reputable environment for your practice to thrive. Ideal for a dental specialist, start-up practice, or medical group looking to expand in one of Chicago's fastest-growing professional districts.

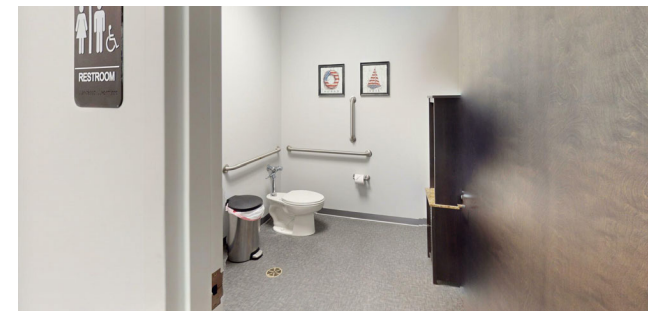
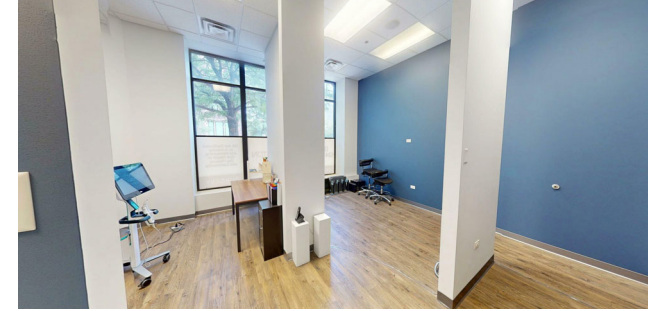
The office is directly next door: 23-story luxury apartment building with lobby connection to building along with 6 new luxury residential towers under construction within two to three blocks.



1229 W. Washington Blvd Ste 100

Dental Space

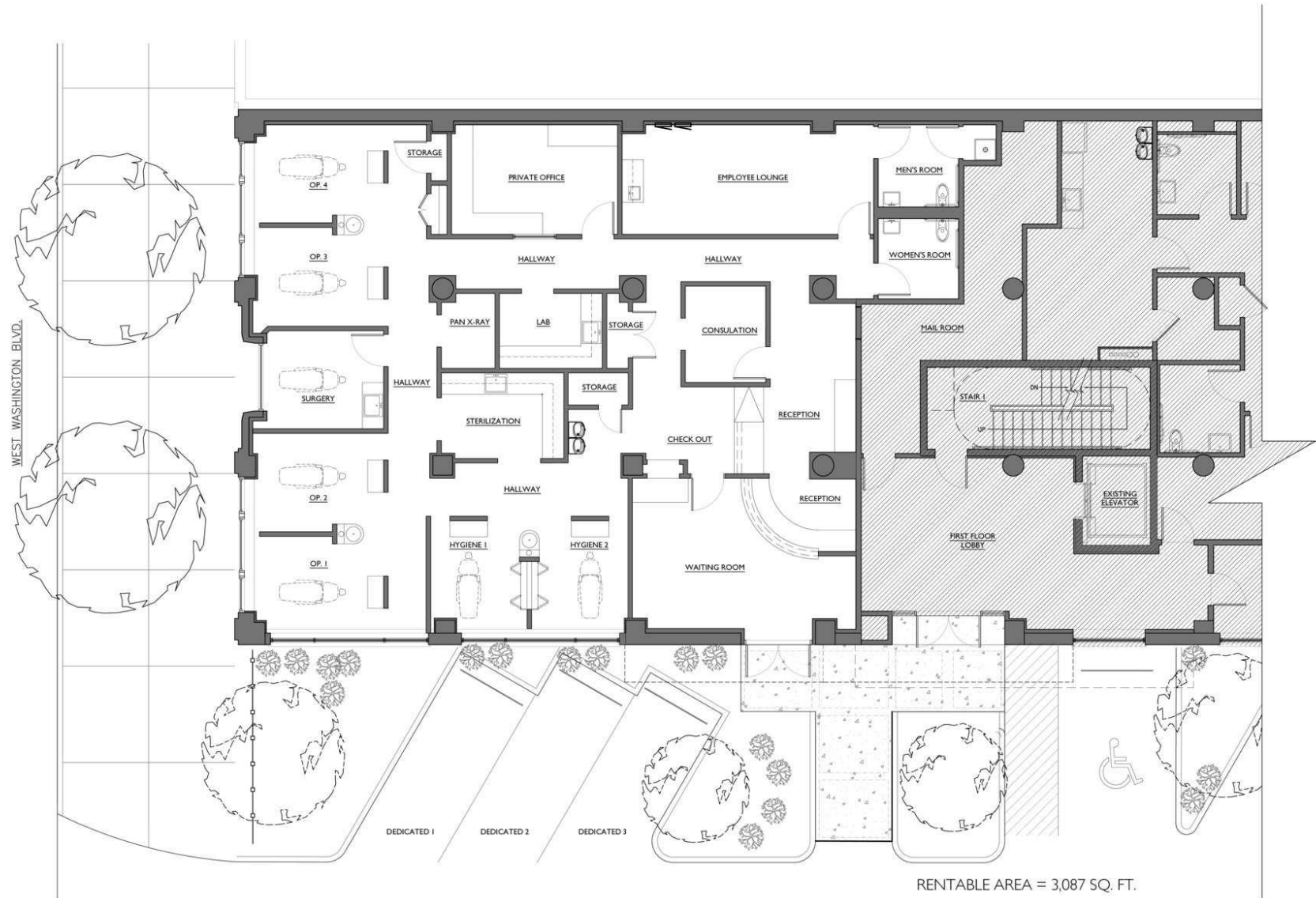
Additional Photos



1229 W. Washington Blvd Ste 100

Dental Space

Floor Plans



RENTABLE AREA = 3,087 SQ. FT.

1229 W. WASHINGTON BLVD, SUITE 100, CHICAGO, ILLINOIS

EXISTING PARTIAL FIRST FLOOR PLAN

SCALE 1/4" = 1'-0"
0' 4' 8' 16'



MAY 19, 2025