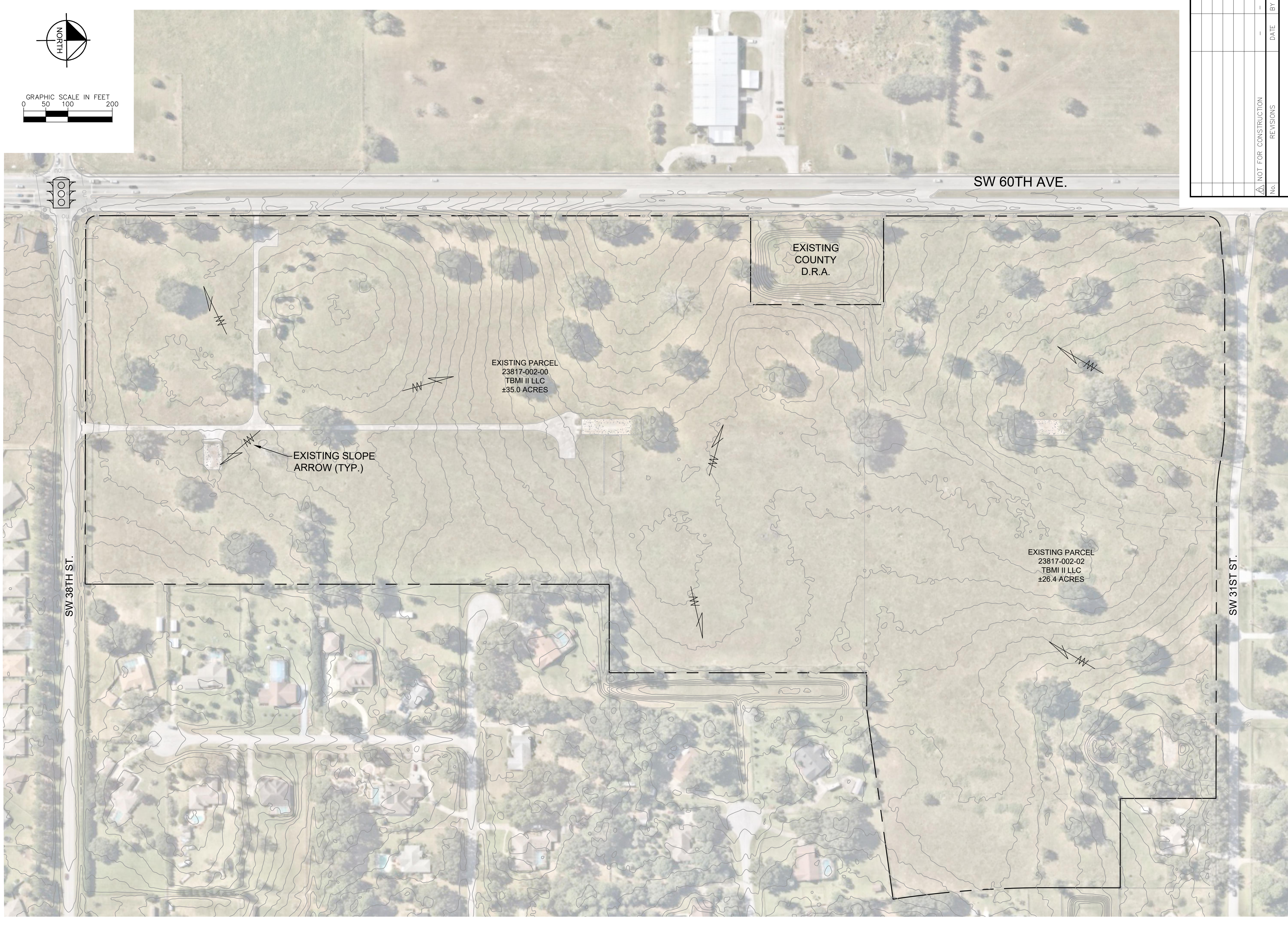








C:\Users\Bead\OneDrive\Documents\23156\PD004\_EXISTING\_TOPOGRAPHY.dwg  
 Plot#: 42887001 A:\address-000\graphics\form\_42887001.dwg  
 This document, together with the concepts and designs presented herein, is an instrument of service, is intended only for the specific purpose and client for which it was prepared. Reuse of and improper reliance on this document without written authorization and adaptation by Kimley-Horn and Associates, Inc. shall be without liability to Kimley-Horn and Associates, Inc.



No.	REVISIONS	DATE	BY
	NOT FOR CONSTRUCTION		

SHEET NUMBER  
**PD004**

**60TH AVE PARCELS**  
 PREPARED FOR  
**TBMI II, LLC**  
 CITY OF OCALA FLORIDA

**EXISTING TOPOGRAPHY**

KHA PROJECT  
42887001  
 DATE  
AUGUST 2022  
 SCALE AS SHOWN  
 DESIGNED BY KHA  
 DRAWN BY KHA  
 CHECKED BY JAF  
 LICENSED PROFESSIONAL  
**JAMESON A. FREDERICK**  
 FLORIDA LICENSE NUMBER  
81405

**Kimley»Horn**  
 © 2022 KIMLEY-HORN AND ASSOCIATES, INC.  
 101 EAST SILVER SPRINGS BLVD, SUITE 400, OCALA, FL 34470  
 WWW.KIMLEY-HORN.COM PHONE: 352-438-3000 REGISTRY NO. 35106