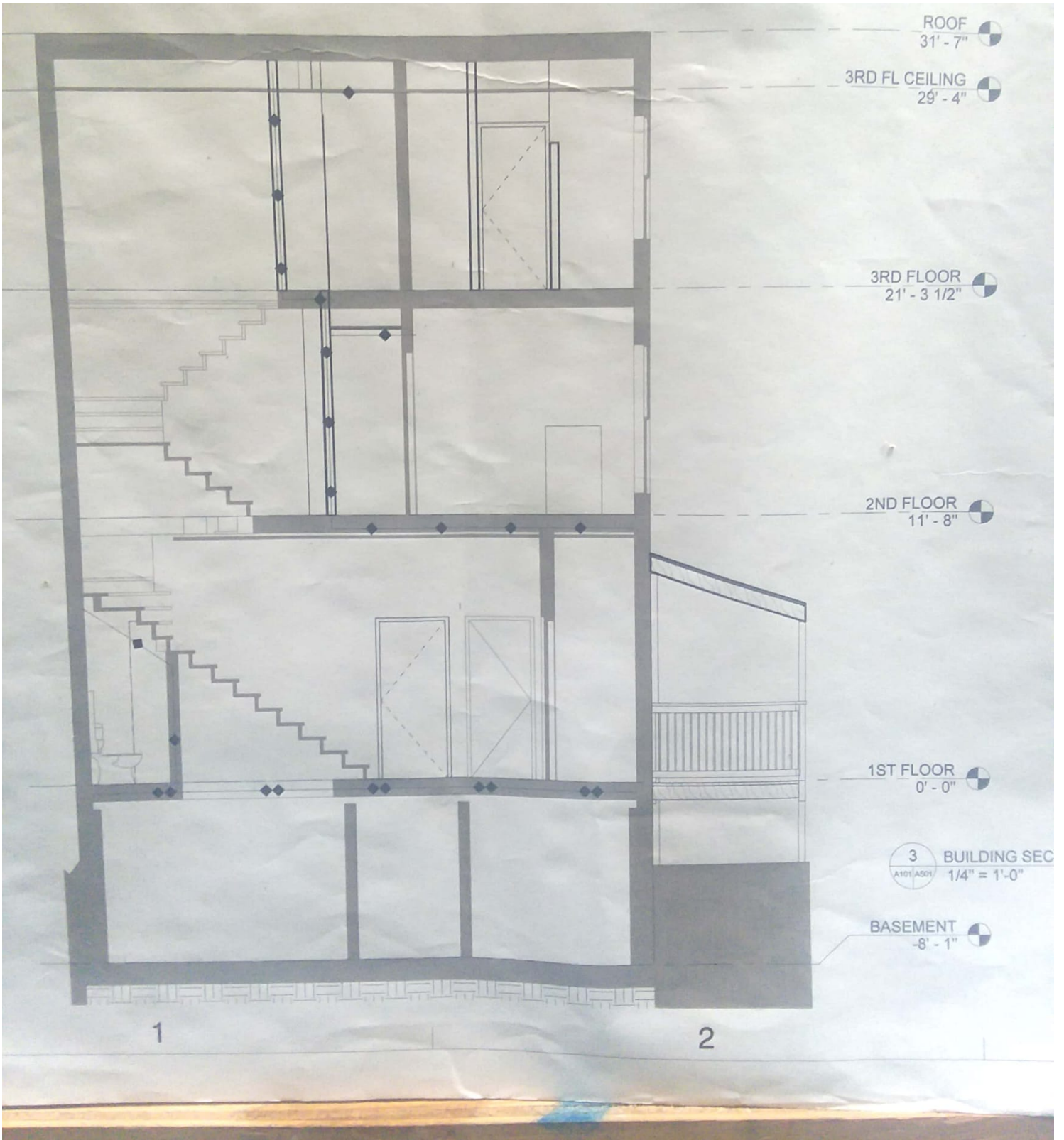
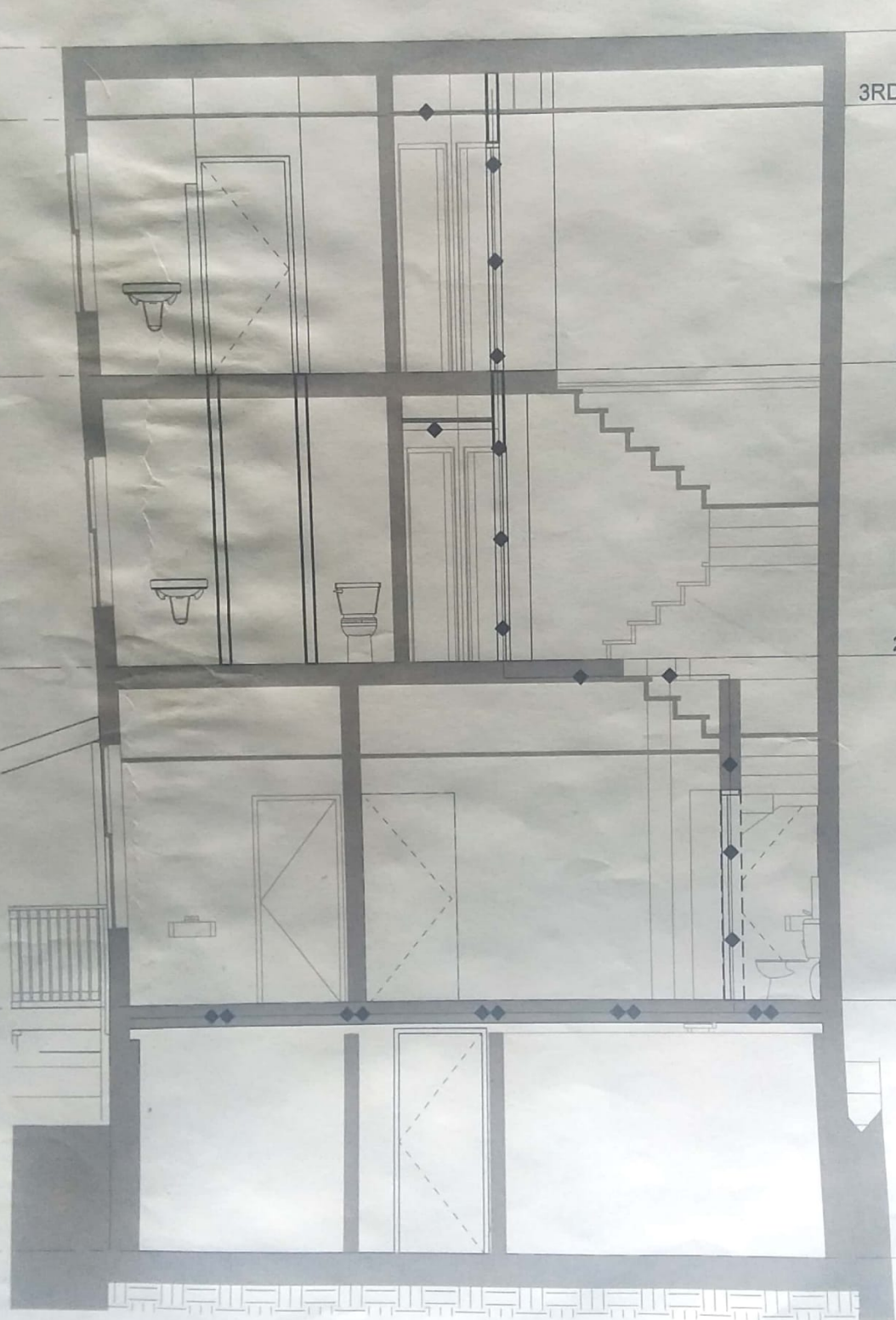

CONSULTANTS

ARCHITECT:
MOSHIER STUDIO
3485 BUTLER STREET, SUITE 102
PITTSBURGH, PA 15201
412-361-5302







ROOF
31' - 7"

3RD FL CEILING
29' - 4"

3RD FLOOR
21' - 3 1/2"

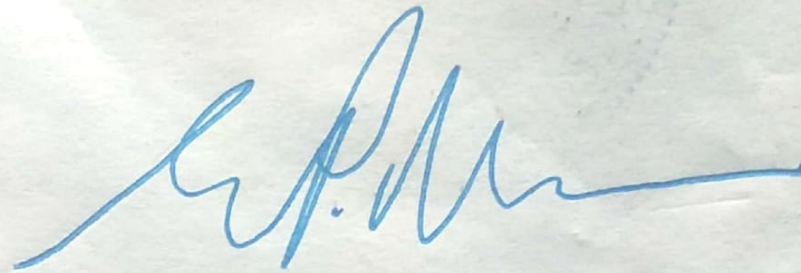
2ND FLOOR
11' - 8"

1ST FLOOR
0' - 0"

2 BUILDING S
A101/A501 1/4" = 1'-0"

BASEMENT
-8' - 1"

4



CONSULTANTS

C

ARCHITECT:
MOSHIER STUDIO
3485 BUTLER STREET, SUITE102
PITTSBURGH, PA 15201
412-361-5302

ELECTRICAL ENGINEER
CARLINS CONSULTING
8005 BROADLAWN DR
PITTSBURGH, PA 15237
412-369-9735

BIU OF PA

Plans Reviewed and

Approved By: *Kenneth W. Beck*

Date: *10/5/15*

B

OWNER:

ALONZO GILMORE

**900 ISLAND AVENUE
RENOVATIONS**

**900 ISLAND AVENUE
MCKEES ROCKS, PA 15136**

MARK	DATE	DESCRIPTION