

Industrial | For Lease

3225 Monier Circle, Suite 100

Rancho Cordova, CA 95742



Contacts:

Sean O'Keefe

Senior Associate

T: 916 446 8706

sean.okeefe@cbre.com

Lic. 02158942



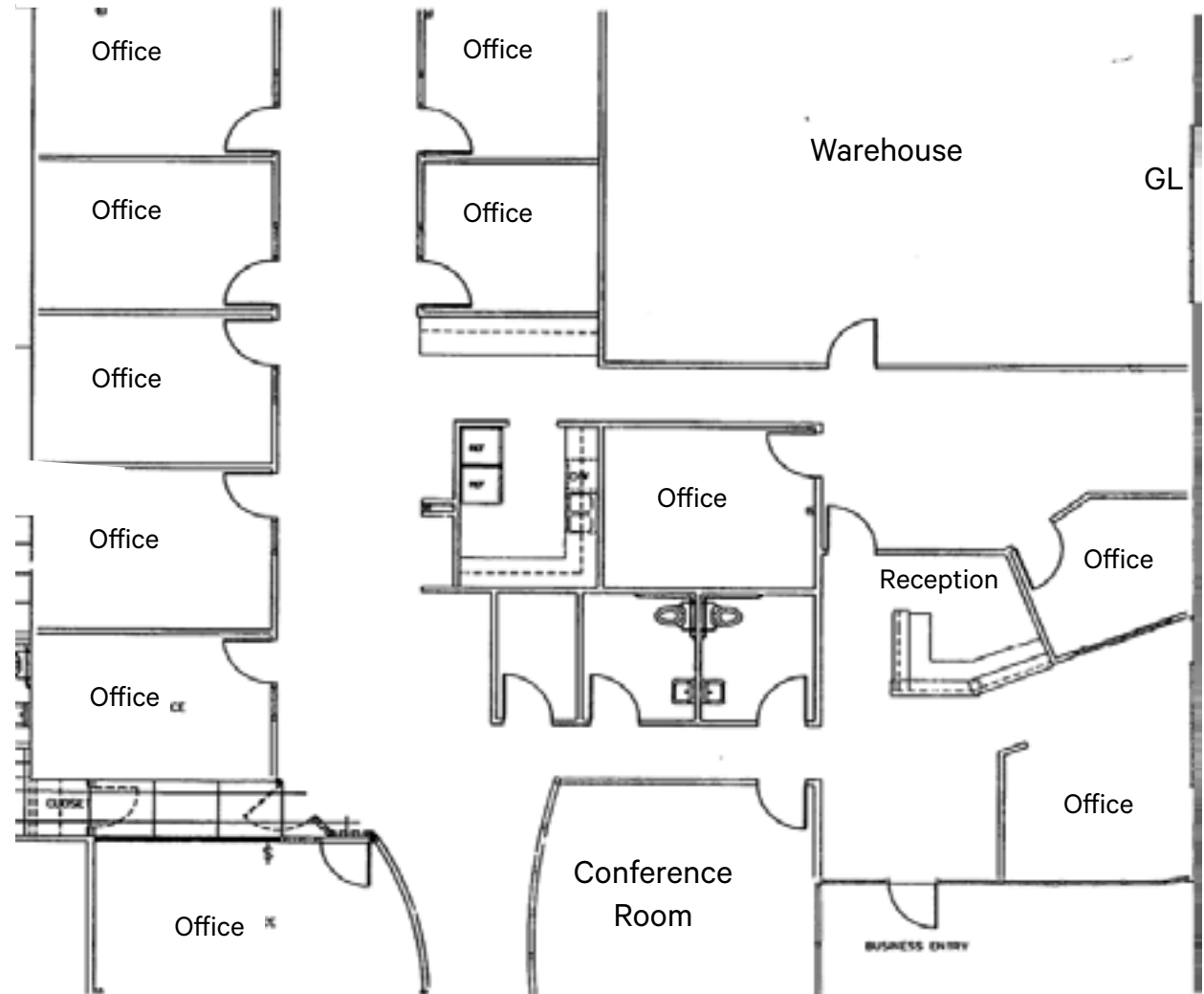
Industrial Building Available

3225 Monier Circle., Suite 100 | Rancho Cordova, CA 95742

For Lease

Property Information

- Total Area: ±4,221 Square Feet
- Clear Height: ±16-18 Feet
- Grade Level Doors: One (1) 12'x12'
- 3 Phase Power
- Newly Remodeled Office
- Open Reception Area
- 11 Private Offices
- Conference Room
- Insulated Roof Deck
- M-1 Zoning

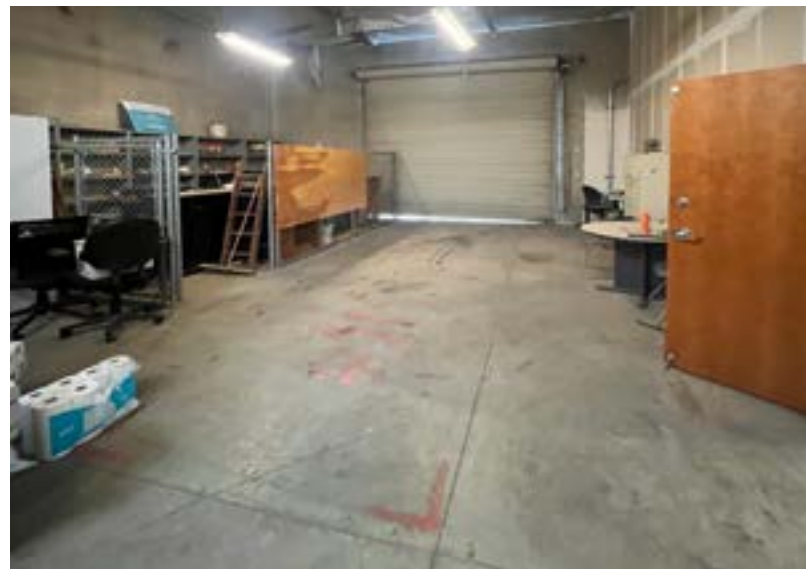


Industrial Building Available

3225 Monier Circle., Suite 100 | Rancho Cordova, CA 95742

For Lease

Property Photos

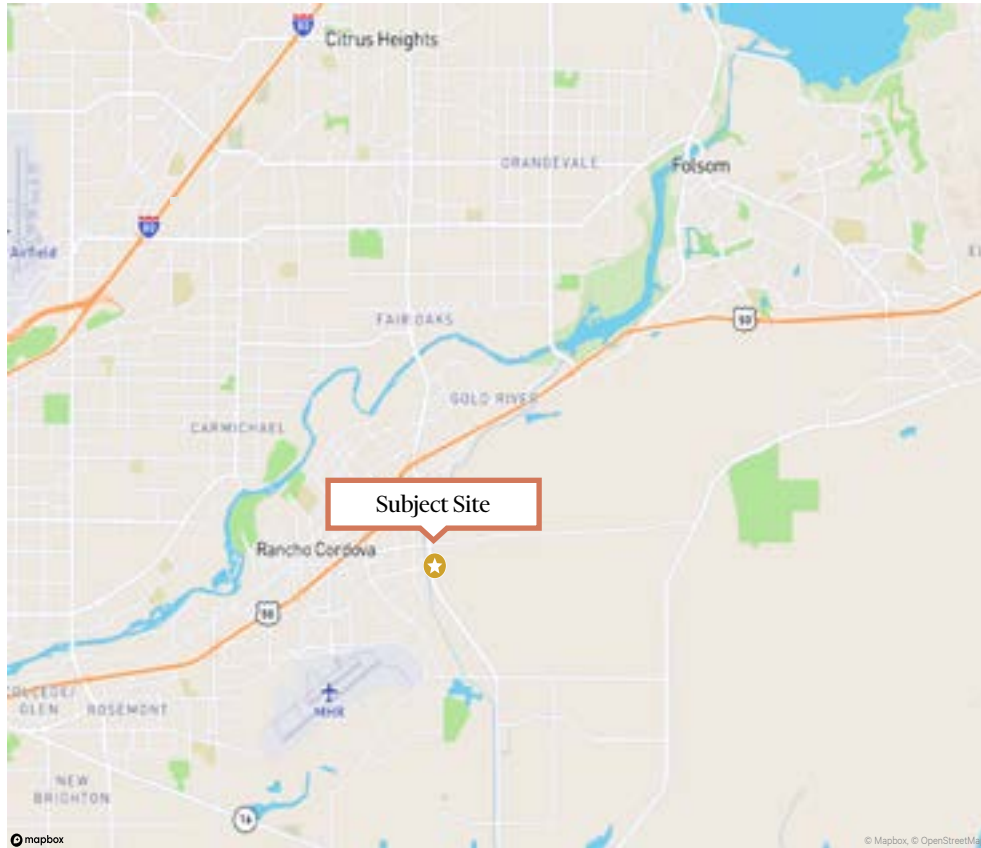


Industrial Building Available

3225 Monier Circle., Suite 100 | Rancho Cordova, CA 95742

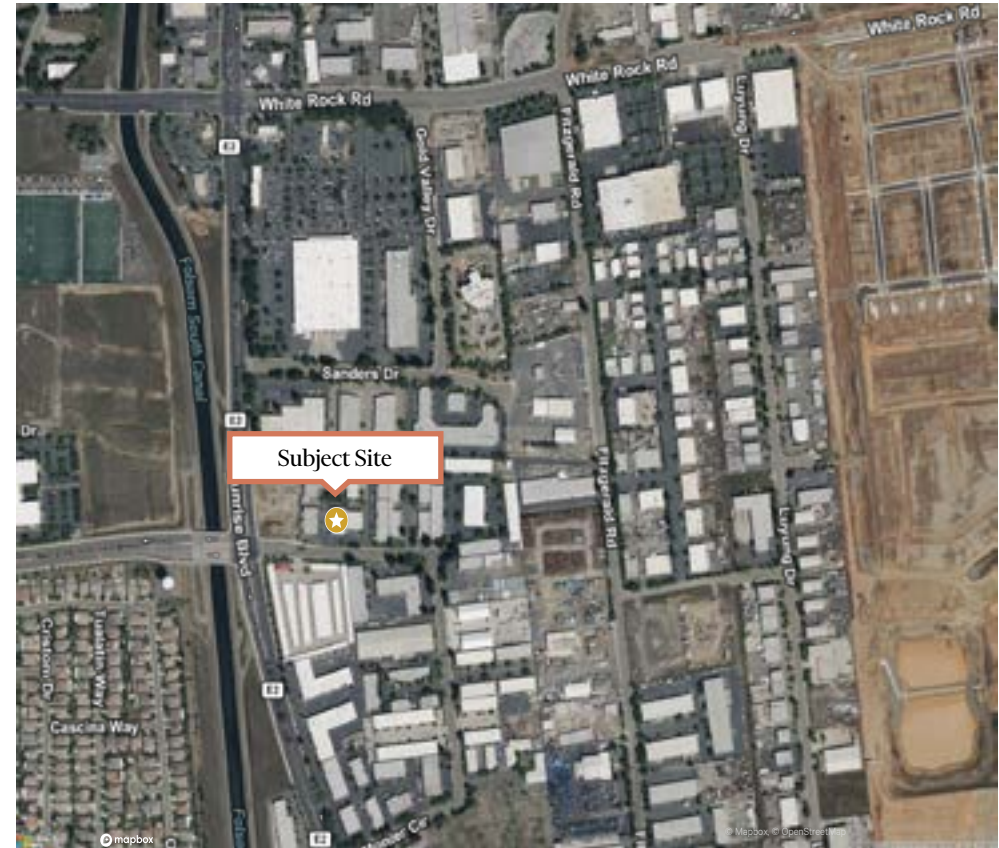
For Lease

Area Map



MAPS NOT TO SCALE

Aerial Map



© 2026 CBRE, Inc. All rights reserved. This information has been obtained from sources believed reliable but has not been verified for accuracy or completeness. CBRE, Inc. makes no guarantee, representation or warranty and accepts no responsibility or liability as to the accuracy, completeness, or reliability of the information contained herein. You should conduct a careful, independent investigation of the property and verify all information. Any reliance on this information is solely at your own risk. CBRE and the CBRE logo are service marks of CBRE, Inc. All other marks displayed on this document are the property of their respective owners, and the use of such marks does not imply any affiliation with or endorsement of CBRE. Photos herein are the property of their respective owners. Use of these images without the express written consent of the owner is prohibited.

