

2,688 - 11,259 SF AVAILABLE

4767 CLARK HOWELL HWY

ATLANTA, GA 30349





4767 CLARK HOWELL HIGHWAY, ATLANTA, GEORGIA 30349

This 19,465 sq. ft. building, situated on a 1.01-acre lot, offers efficient operations with 12' x 12' grade-level doors and flexible configurations to meet a variety of needs. Ideally located just over half a mile from I-285 and only 1.6 miles from Hartsfield-Jackson Atlanta International Airport, the property provides exceptional accessibility for logistics and distribution with suites 4 and 6 currently available.

BUILDING SPECS

BUILDING SIZE 19,465 SF

SUITE 2 2,736 SF

SUITE 4 2,688 SF

SUITE 5 2,721 SF

SUITE 6 3,114 SF

LOT SIZE 1.01 acres

CLEAR HEIGHT 15'

LOADING Grade level (12'x12')

BUILDING DEPTHS 90' - 100'

LIGHTING Warehouse LED

COUNTY Clayton



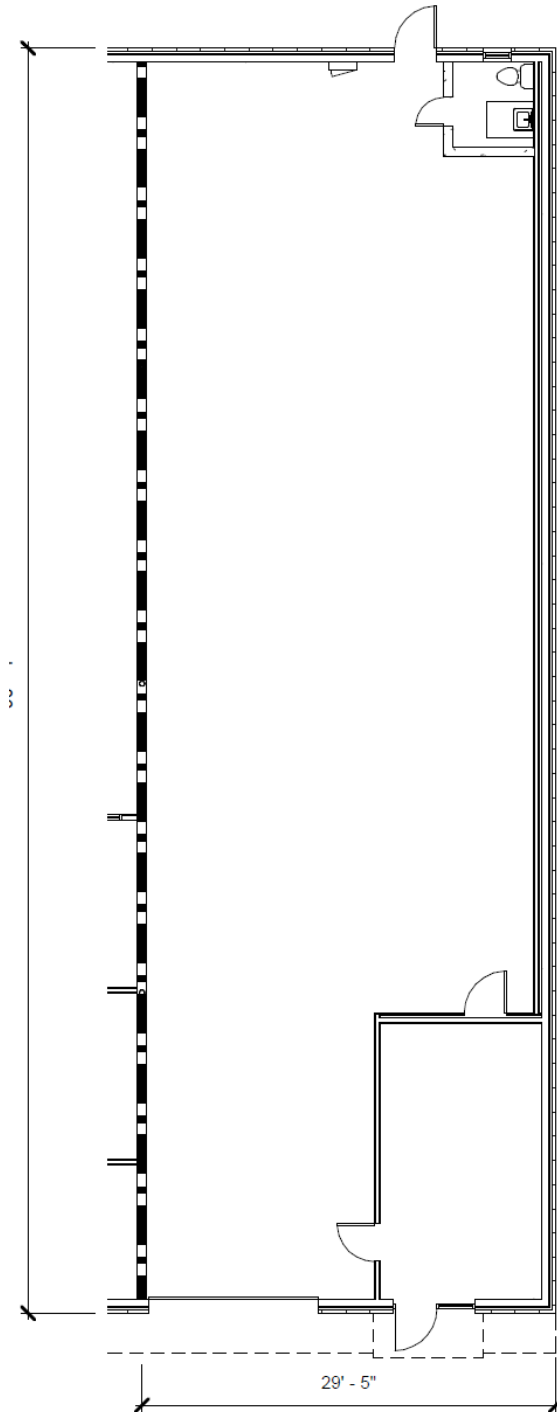
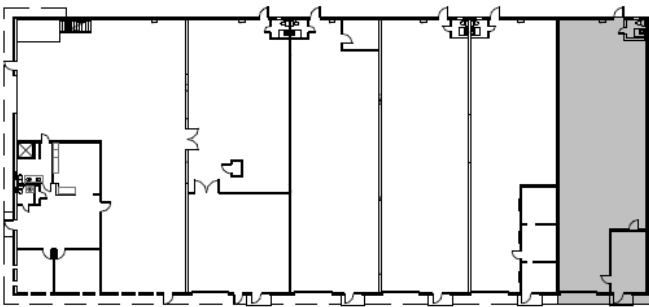
SUITE 2 SPECS

AVAILABLE 2,736 SF

OFFICE 303 SF

LOADING 1 grade level door

KEY PLAN

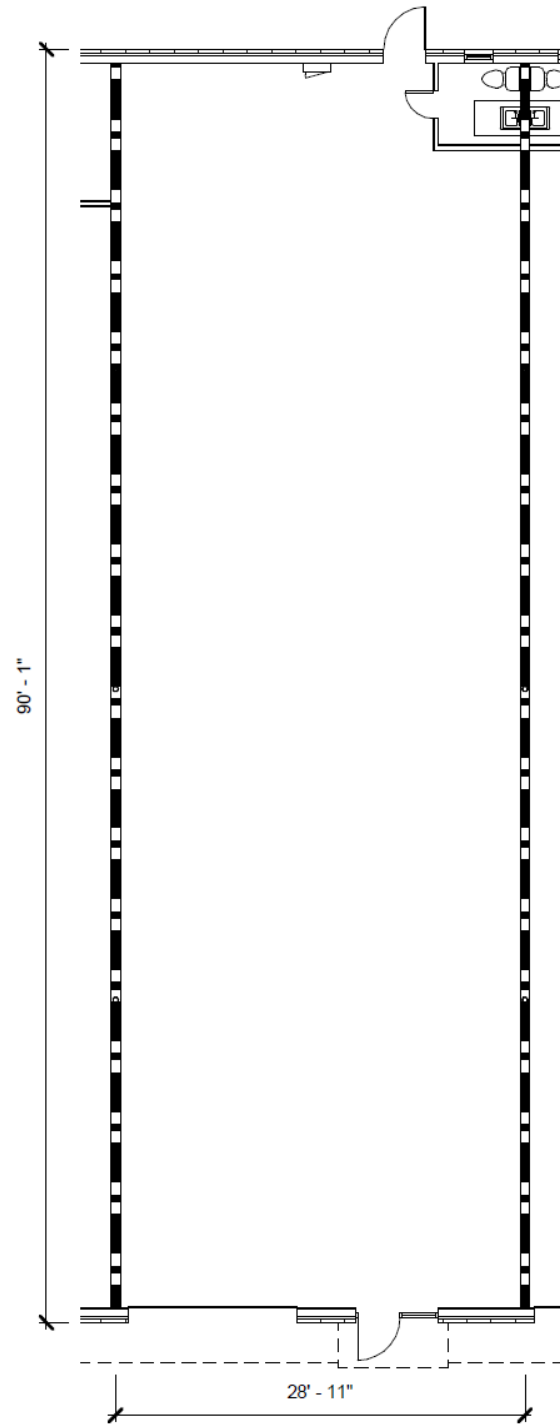
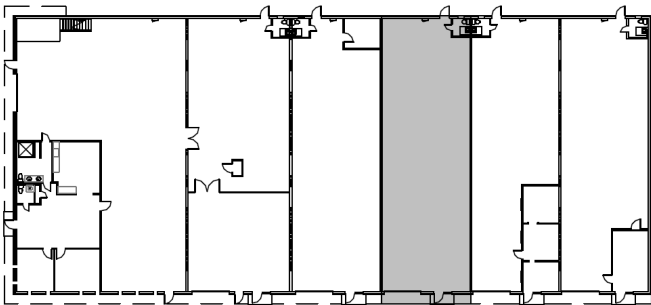


SUITE 4 SPECS

AVAILABLE 2,688 SF

LOADING 1 grade level door

KEY PLAN

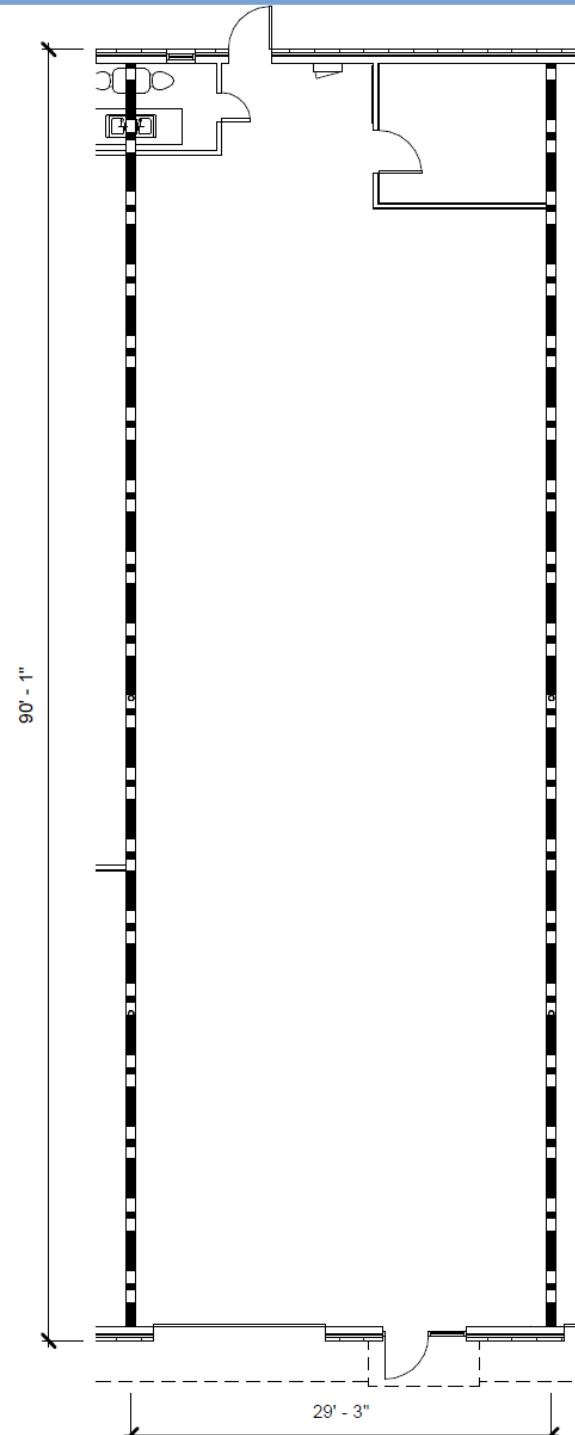
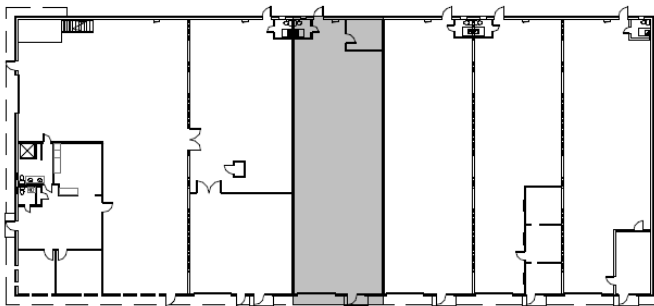


SUITE 5 SPECS

AVAILABLE 2,721 SF

LOADING 1 grade level door

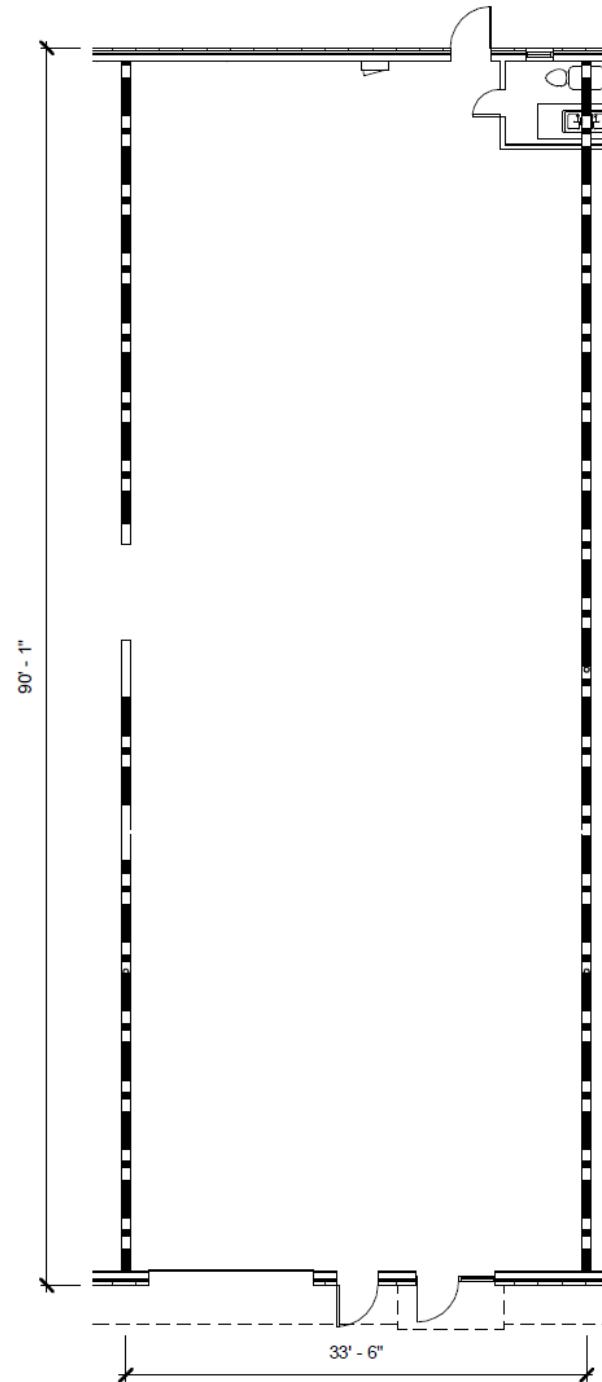
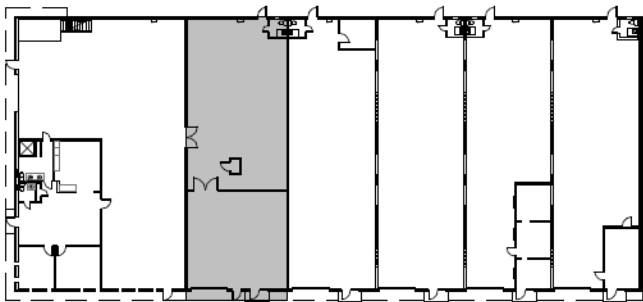
KEY PLAN

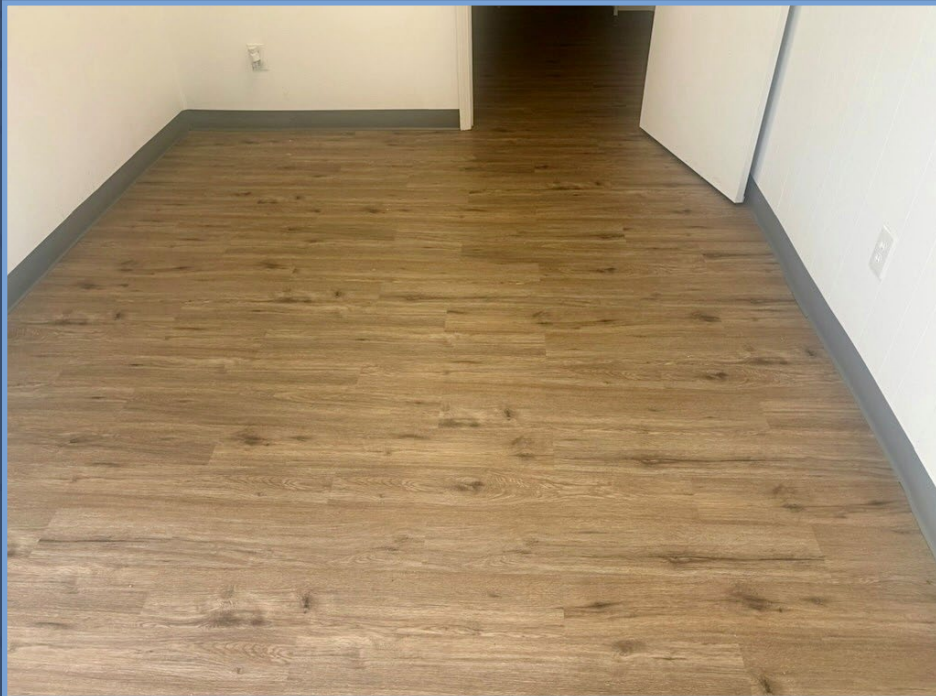


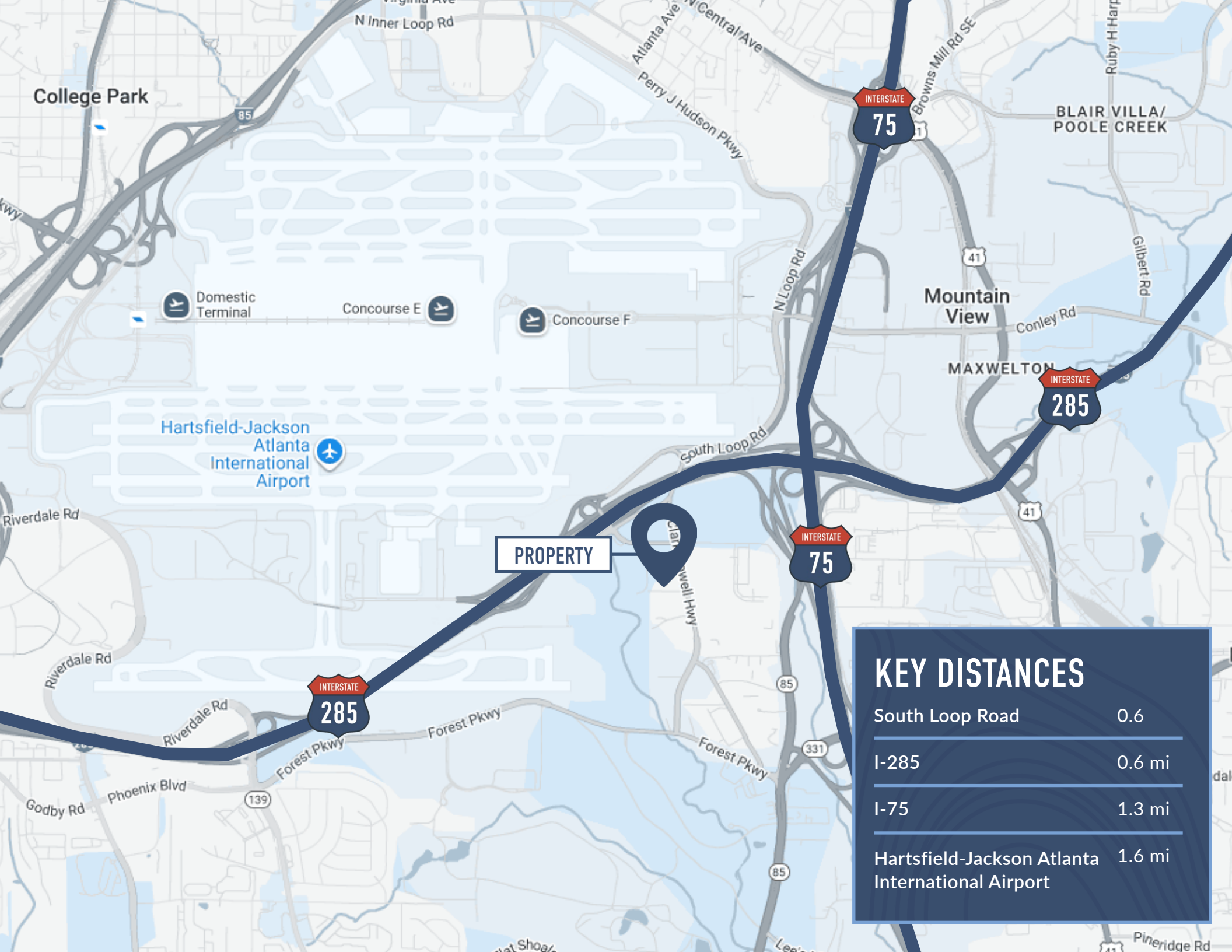
SUITE 6 SPECS

AVAILABLE	3,114 SF
OFFICE SPACE	1,202 SF
LOADING	1 grade level door

KEY PLAN







College Park

N Inner Loop Rd

Atlanta Ave N Central Ave
Perry J Hudson Pkwy

INTERSTATE
75

Browns Mill Rd SE

BLAIR VILLA/
POOLE CREEK

Ruby H Harp

Gilbert Rd

Domestic Terminal

Concourse E

Concourse F

Mountain View

Conley Rd

MAXWELTON

INTERSTATE
285

Hartsfield-Jackson
Atlanta
International
Airport

South Loop Rd

PROPERTY



INTERSTATE
75

41

Riverdale Rd

Riverdale Rd

Riverdale Rd

INTERSTATE
285

Forest Pkwy

Forest Pkwy

85

331

Godby Rd

Phoenix Blvd

139

Forest Pkwy

85

KEY DISTANCES

South Loop Road 0.6

I-285 0.6 mi

I-75 1.3 mi

Hartsfield-Jackson Atlanta International Airport 1.6 mi

Pineridge Rd



John Gosnell
404.563.0608
jgosnell@strategicrepartners.com
www.strategicrepartners.com

Joe Taylor
404.909.9721
jtaylor@strategicrepartners.com
www.strategicrepartners.com

