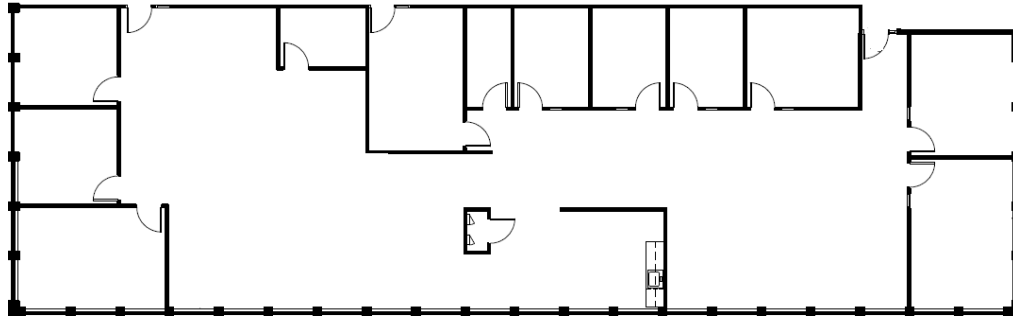


SUITE 115 & 116 | 5,260 SF

280 Shuman Blvd \ Naperville, IL



SPACE NOTES

- 9 Private Offices
- Open Area for Workstations
- Reception
- Conference Room



RYAN MOEN, SIOR
PRINCIPAL
DESIGNATED MANAGING BROKER
630.480.6346
RMOen@VersaRES.com

JOHN MILLNER, CCIM
PRINCIPAL
630.480.6342
JMillner@VersaRES.com

TOBY GARDNER
ASSOCIATE
630.480.6017
TGardner@VersaRES.com

1 MID AMERICA PLAZA, 3RD FLOOR
OAKBROOK TERRACE, IL 60181
630.480.6413

EXCLUSIVELY LISTED BY
VERSA
REAL ESTATE SERVICES