

40 Acres | Prime High-Traffic Development Opportunity

SWC Highway 287 and Attaway Roads | Coolidge, AZ

www.willislandco.com

Exclusively Presented By

Ryan Willis

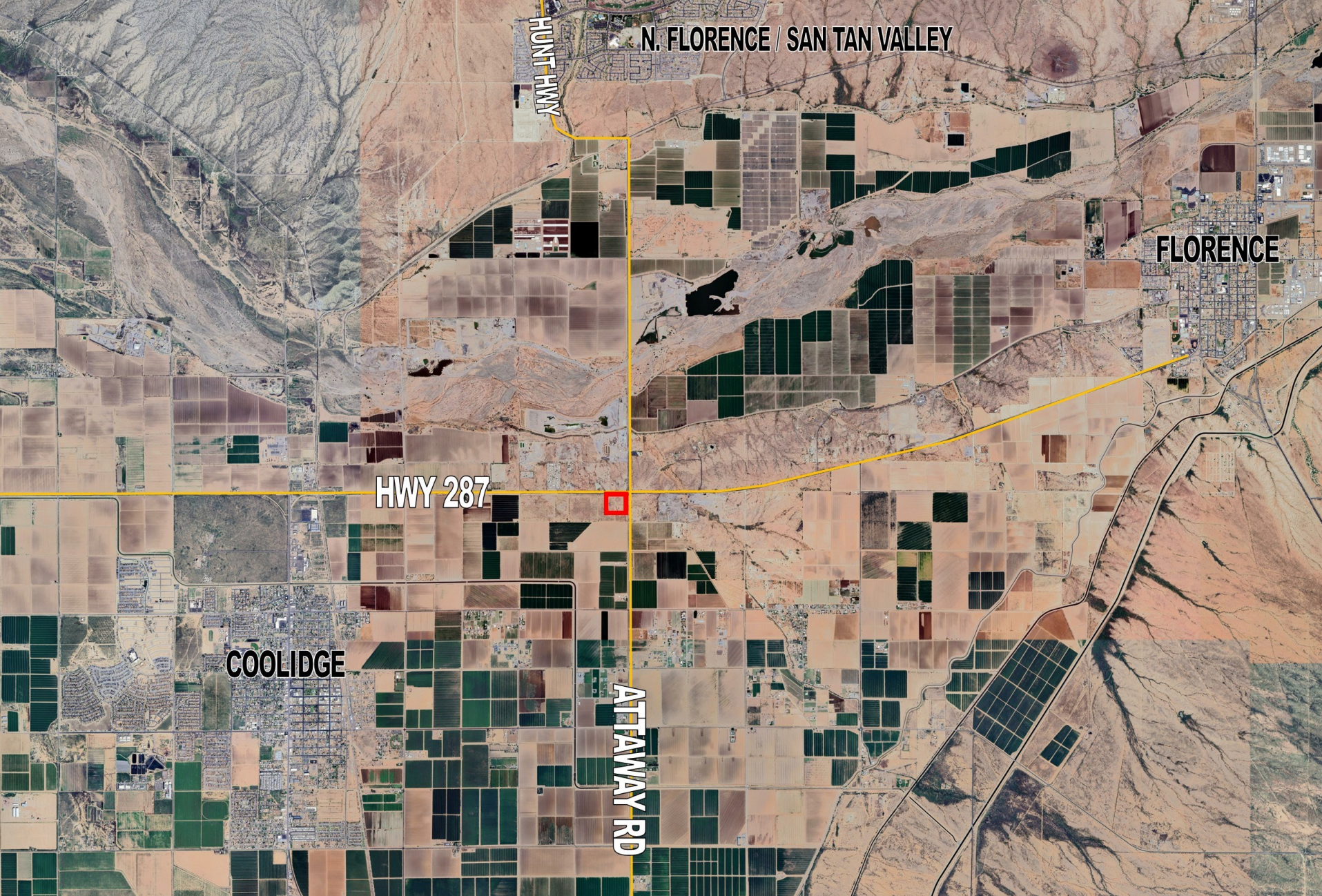
480.507.6200

ryan@willislandco.com

3850 E. Baseline Road, Ste. 118
Mesa, Arizona 85206

WILLIS LAND
COMPANY

AERIAL MAP



PROPERTY DESCRIPTION

Location:

SWC of Highway 287 and Attaway Roads

Acreage:

+/- 45.19 Acres (+/- 5 Acres Under Contract)

APN'S:

209-15-008A & 209-15-008B

Zoning:

C-3 (High Intensity Retail or Service Outlets)

Notes:

Site is located at the intersection where Coolidge, Florence and San Tan Valley all come together.

Utilities:

Electric: APS

Telephone: Qwest/ Cox Communications

Water: Arizona Water Company

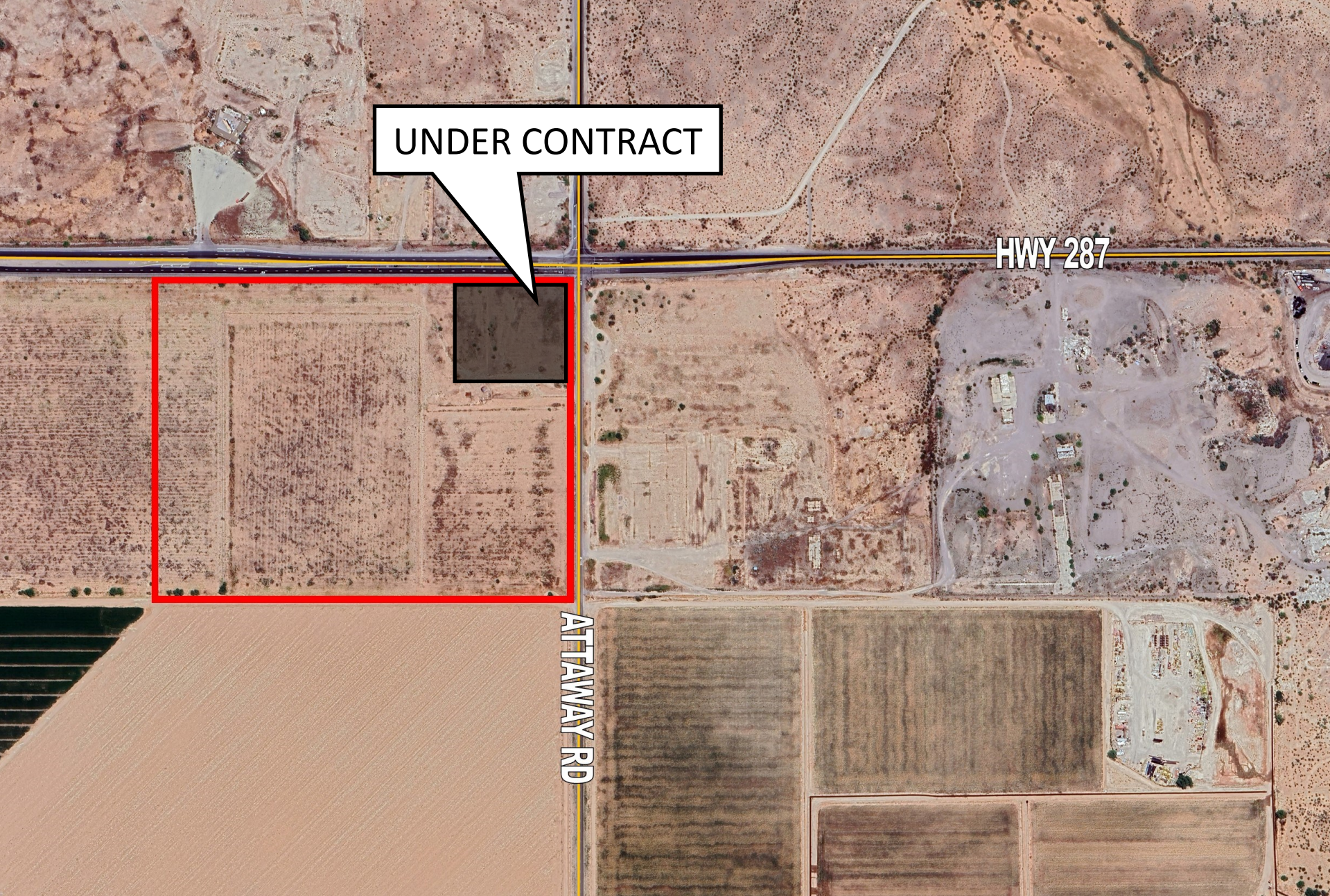
Sewer: Septic

Price:

SUBMIT OFFER

All Information contained herein is from sources deemed reliable but not guaranteed. Buyer should be satisfied as to the accuracy of all data. Offer subject to prior sale, price change or withdrawal.

AERIAL



UNDER CONTRACT

HWY 287

ATTAWAY RD

LOCATION AERIAL

