



Commercial Office Park I & II

4610 - 4704 W Commercial Drive
North Little Rock, AR

DAVID HATHAWAY
DIRECT: 501.978.4977 CELL: 501.529.4868
David@HathawayGroup.com



FOR LEASE:

\$14.50/SF + Janitorial

Overview:

- Good access from Warden Road to West Commercial Drive. There is also great access to and from Interstate 57.
- West Commercial Drive signage available
- Conveniently park in front of your suite

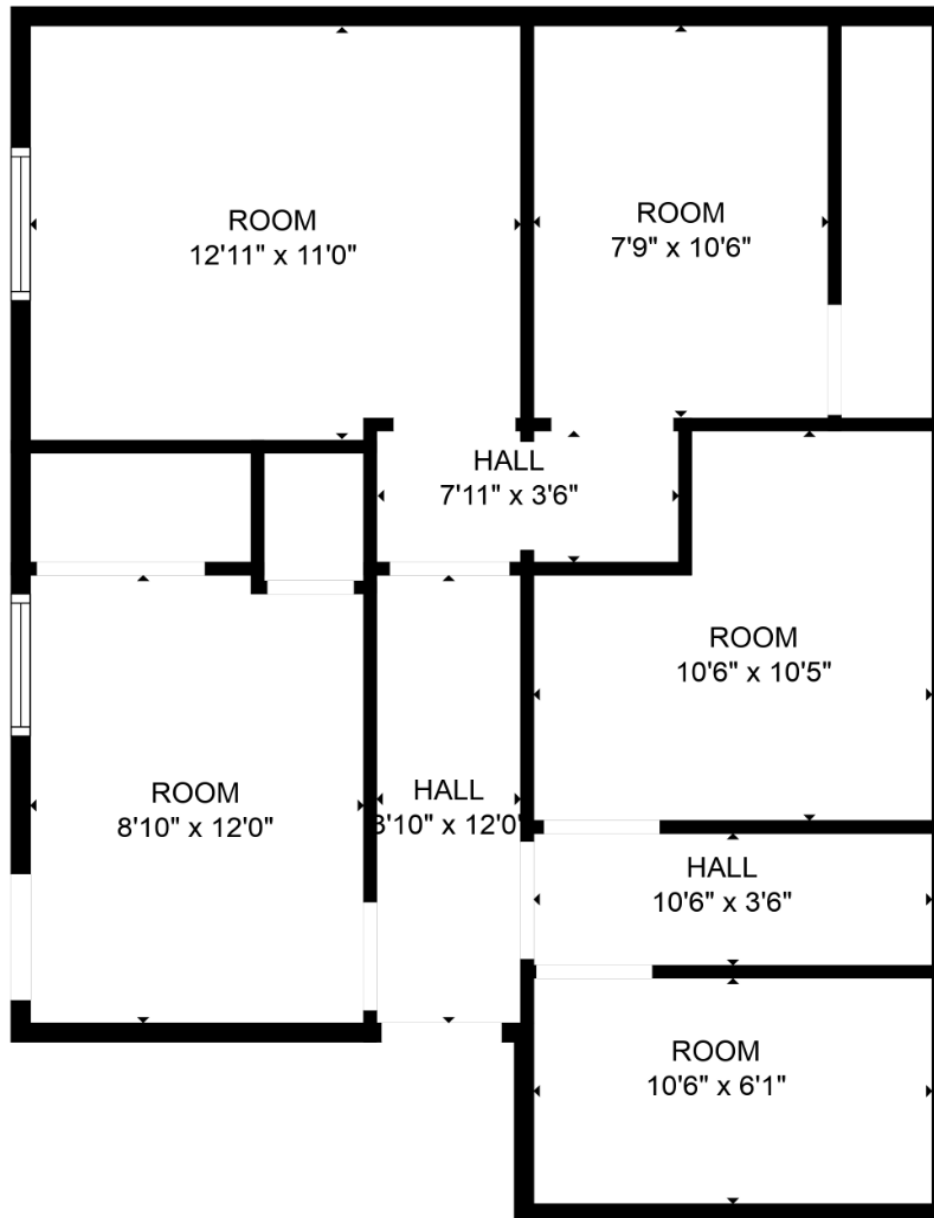
AVAILABLE SUITES:

Address	Suite	Rentable SF
4700 W. Commercial Dr.	B2	875
4702 W. Commercial Dr.	C	2,000
4704 W. Commercial Dr.	B	3,000

4700 W. Commercial Dr.

Suite B2

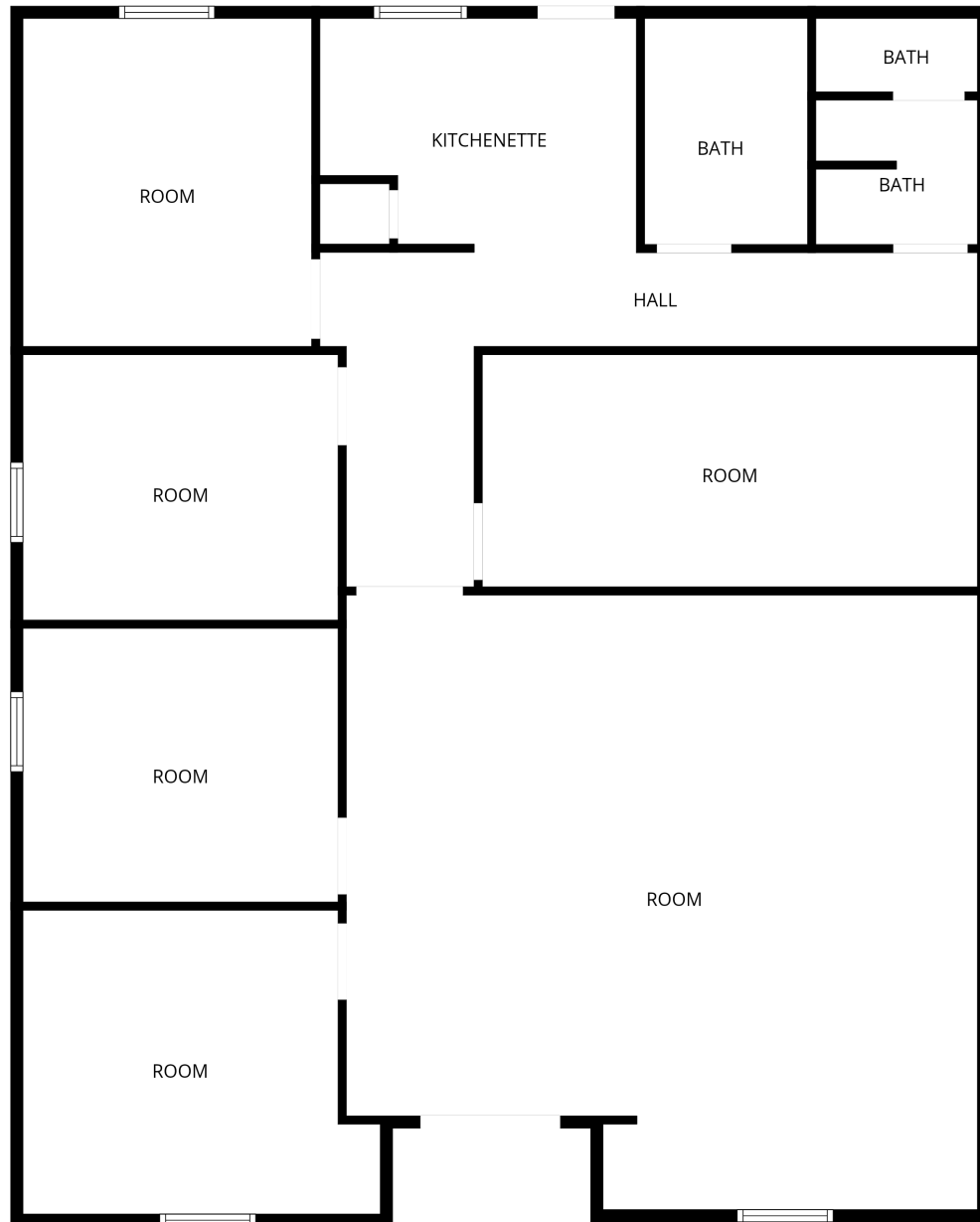
875 SF



4702 W. Commercial Dr.

Suite C

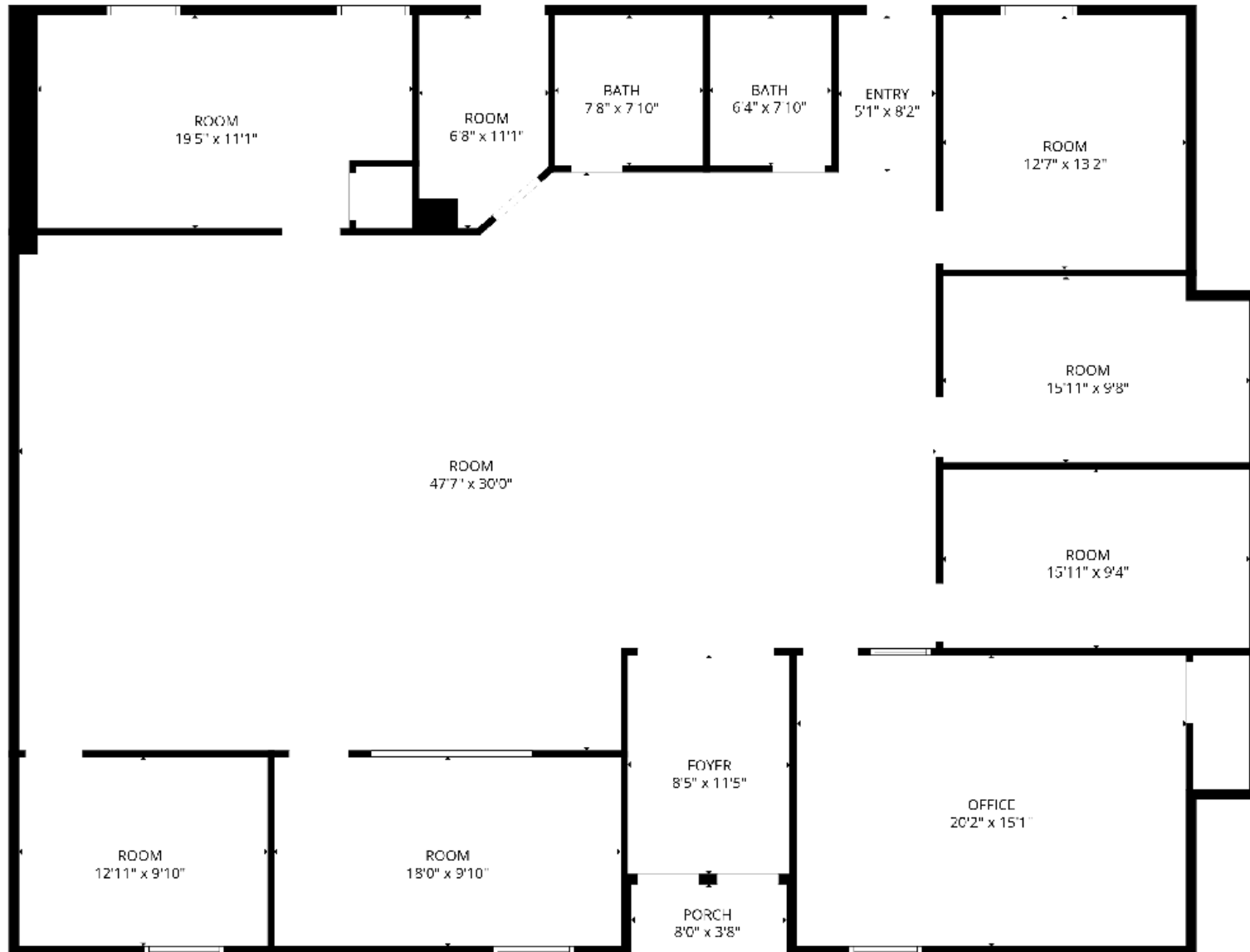
2,000 SF



4702 W. Commercial Dr. Suite C 2,000 SF



4704 W. Commercial Dr. Ste. B — 3,000 SF



4704 W. Commercial Dr. Ste. B — 3,000 SF



