



**5125 EAST
HIGHWAY 16**
TURIN, GA 30276

For Lease
1,800 - 9,000± SF Build To Suit

BOB STEPHENS
Vice President
404.942.2076
bstephens@kingindustrial.com

KING *Industrial
Realty, Inc.*

Industrial • Commercial • Investment
404.942.2000 | kingindustrial.com

FOR LEASE
1,800 - 9,000± SF
BUILD TO SUIT

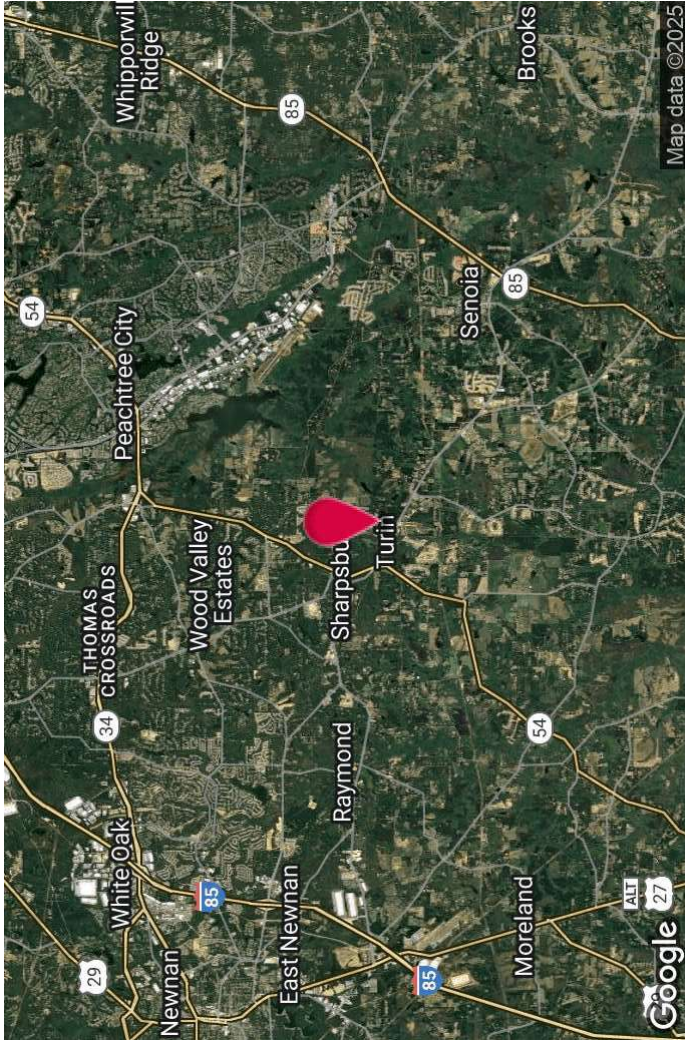


PROPERTY HIGHLIGHTS

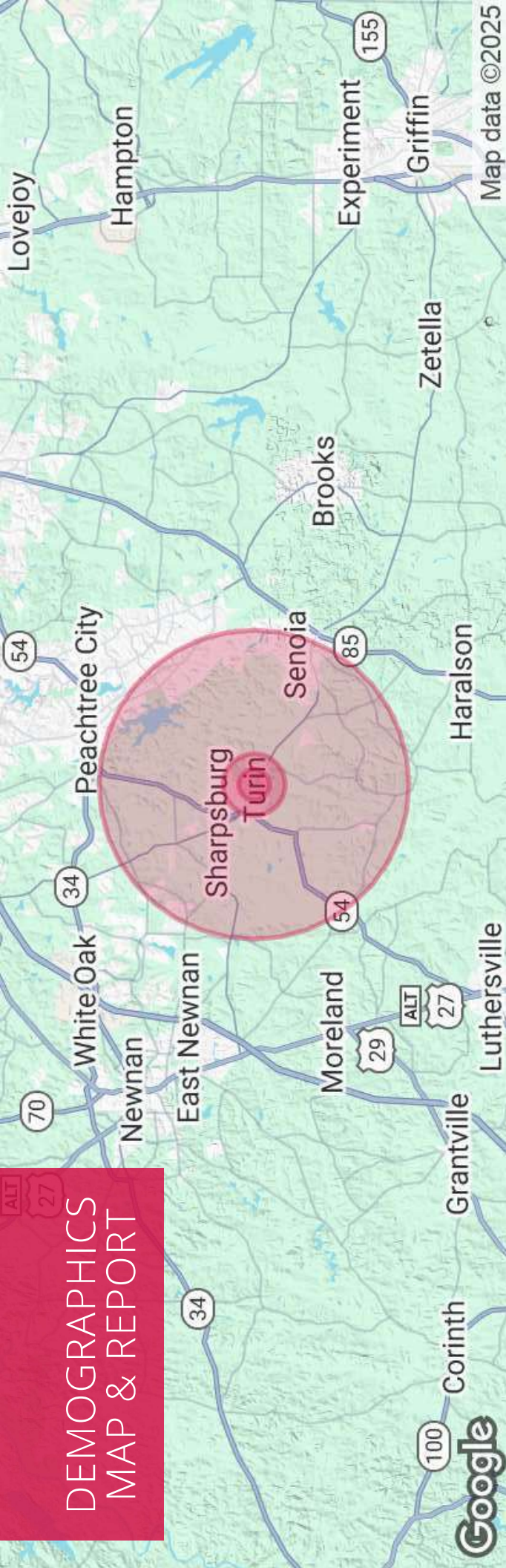
- Flex Space
- Build To Suit Office
- 1 Drive In Door per Suite
- 21' Ceiling Height
- Frontage on Hwy. 16

BUILDING SUMMARY

Available SF:	1,800 - 9,000 ± SF BTS
Lot Size:	1.27 Acres
Building Size:	9,000 SF
Zoning:	GC



DEMOGRAPHICS MAP & REPORT



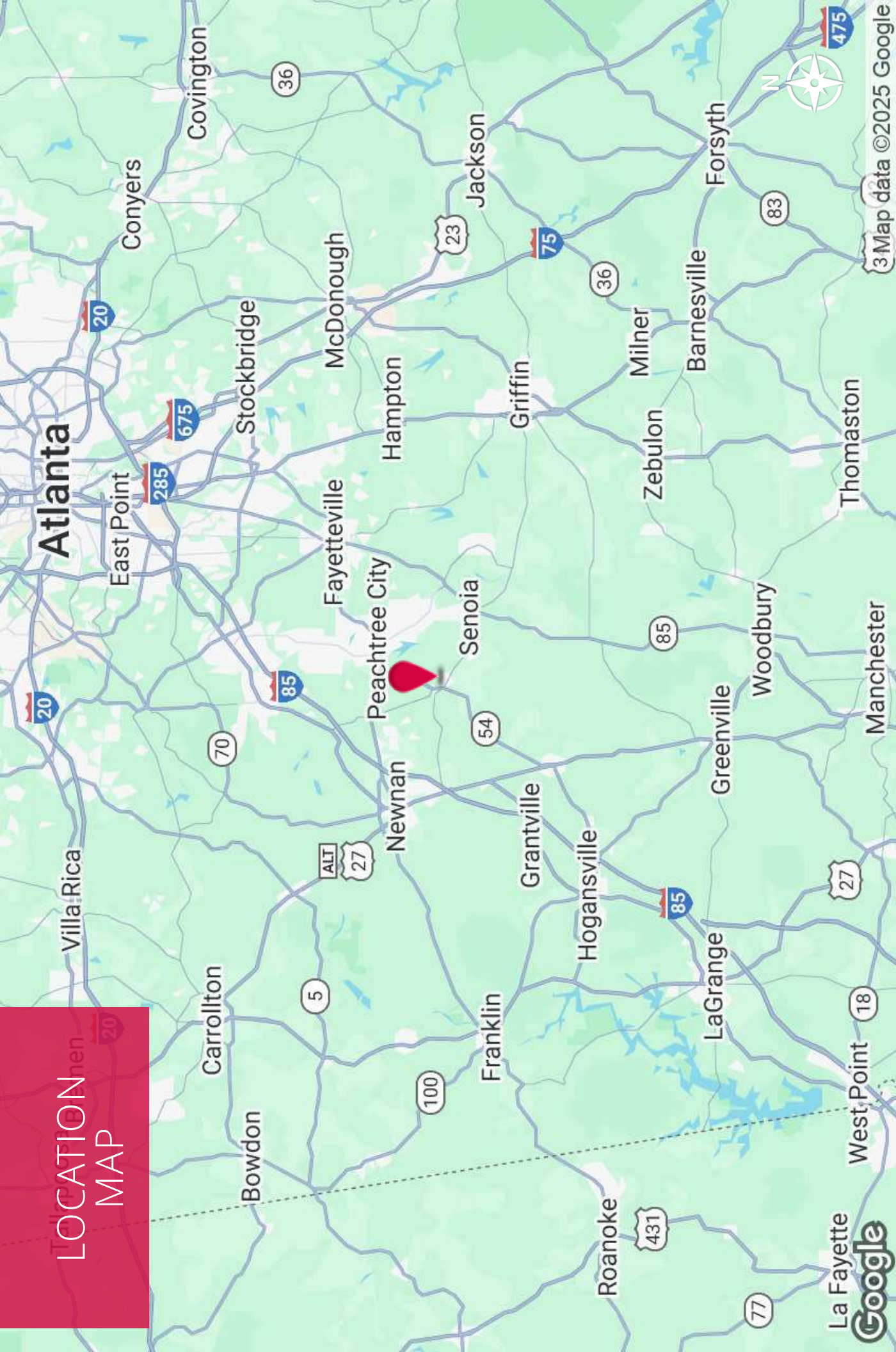
POPULATION

	0.5 MILES	1 MILE	5 MILES
Total Population	142	553	26,639
Average Age	42	42	41
Average Age (Male)	42	41	40
Average Age (Female)	43	43	41

HOUSEHOLDS & INCOME

	0.5 MILES	1 MILE	5 MILES
Total Households	53	206	9,405
# of Persons per HH	2.7	2.7	2.8
Average HH Income	\$108,303	\$110,474	\$128,086
Average House Value	\$403,109	\$403,482	\$395,508

LOCATION MAP



BOB STEPHENS

Vice President

404.942.2076

bstephens@kingindustrial.com

Every effort has been made to provide accurate information, but no liability is assumed for errors or omissions.

King
Industrial
Realty, Inc.

CORFAC
INTERNATIONAL

Industrial • Commercial • Investment
404.942.2000 | kingindustrial.com

3 Map data ©2025 Google



EXCLUSIVELY LISTED BY:

BOB STEPHENS

Vice President

bstephens@kingindustrial.com

404.942.2076

KING
Industrial
Realty, Inc.

Industrial • Commercial • Investment
404.942.2000 | kingindustrial.com