

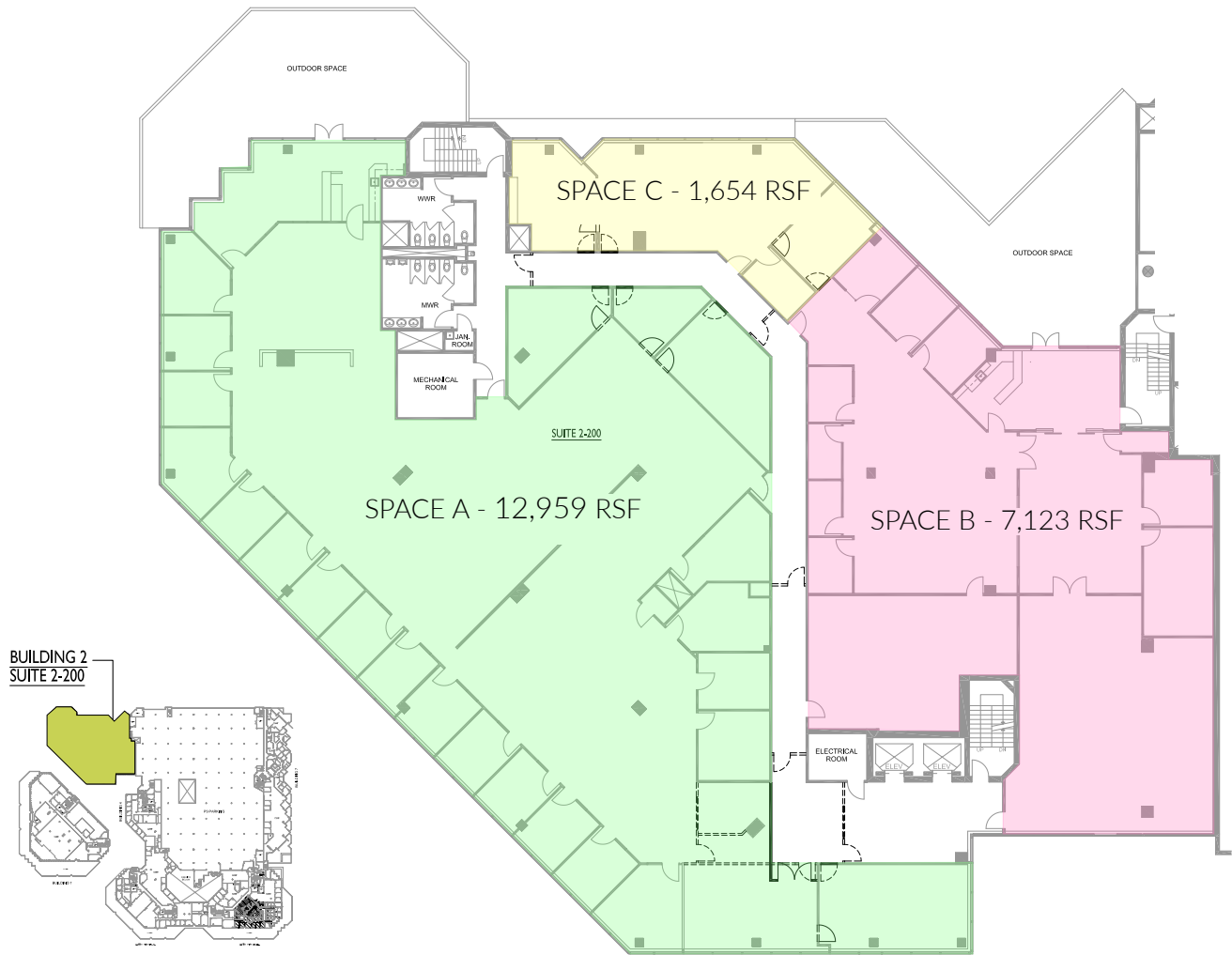
# WATERFRONT PLAZA

500 ALA MOANA BLVD  
HONOLULU, HI 96813



# Suite 2-200

## Floorplan with Demising Options



## Square Footage

Suite 2-200 A: 12,959 RSF

Suite 2-200 C: 1,654 RSF

Suite 2-200 B: 7,123 RSF

Total: 21,736 RSF

## Base Rent

Negotiable

## OPEX

\$1.85/RSF

**VIRTUAL  
TOUR**

**3D FLOORPLAN  
& PHOTOS**





500 ALA MOANA BLVD  
HONOLULU, HI 96813

WATERFRONT PLAZA

## Contact Us

### Serena C. Longo

Vice President  
+1 808 541 5181  
serena.longo@cbre.com  
Lic. Rs-74888

### Shawlea K. Aona

Senior Associate  
+1 808 541 5142  
shawlea.aona@cbre.com  
Lic. Rs-73197

LIC. RB-20142

© 2024 CBRE, Inc. All rights reserved. This information has been obtained from sources believed reliable, but has not been verified for accuracy or completeness. You should conduct a careful, independent investigation of the property and verify all information. Any reliance on this information is solely at your own risk. CBRE and the CBRE logo are service marks of CBRE, Inc. All other marks displayed on this document are the property of their respective owners, and the use of such logos does not imply any affiliation with or endorsement of CBRE. Photos herein are the property of their respective owners. Use of these images without the express written consent of the owner is prohibited.

SL:JMG\_Waterfront\_Plaza\_BRO\_v10\_CH\_03.29.24



[www.parallelcapitalpartners.com](http://www.parallelcapitalpartners.com)

**CBRE**