

For Lease

30655 San Clemente Street

Hayward, CA



Accelerating success.

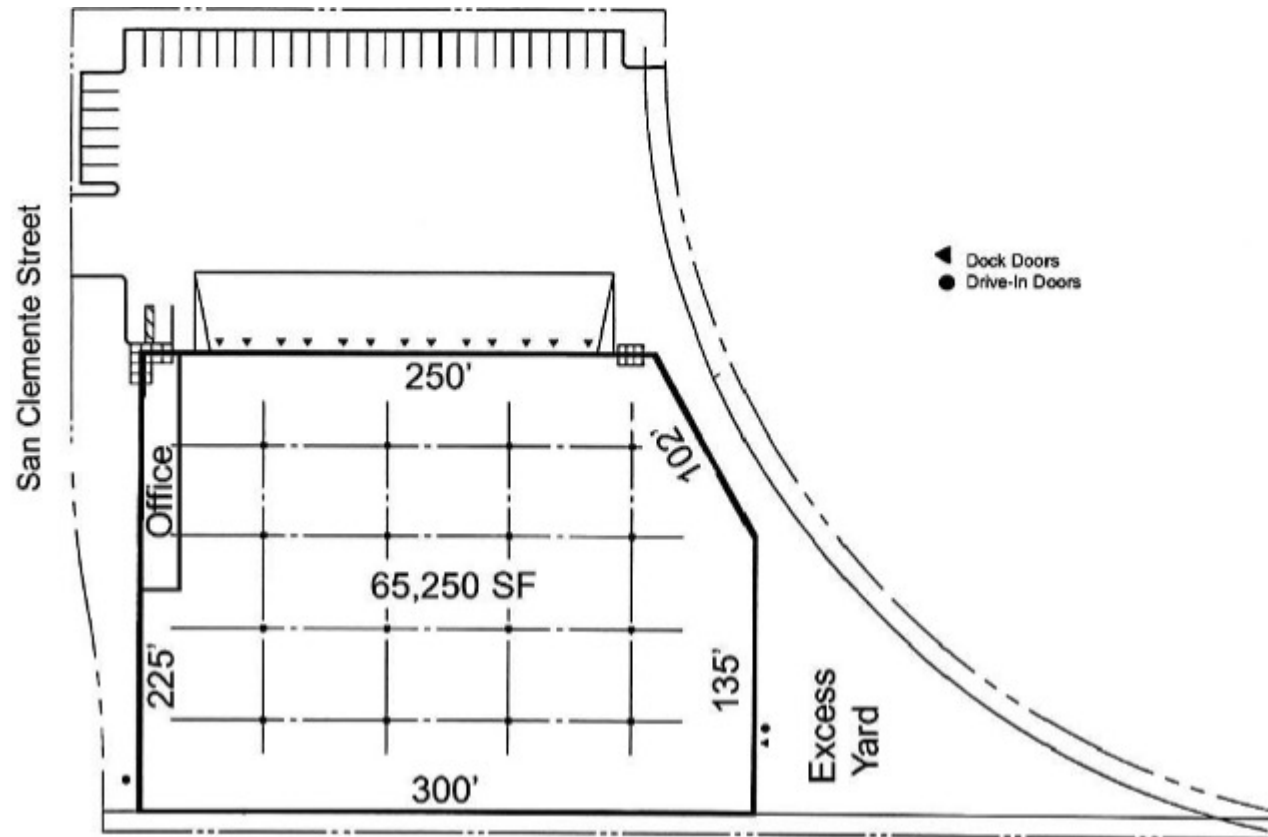
Site Plan

Comments:

Well maintained facility with excellent staging/yard and freeway access to 880, 580, 92 and 238. Facility is leased through October 31, 2026, but can be made available earlier. Please contact Brokers with questions.

Property Features:

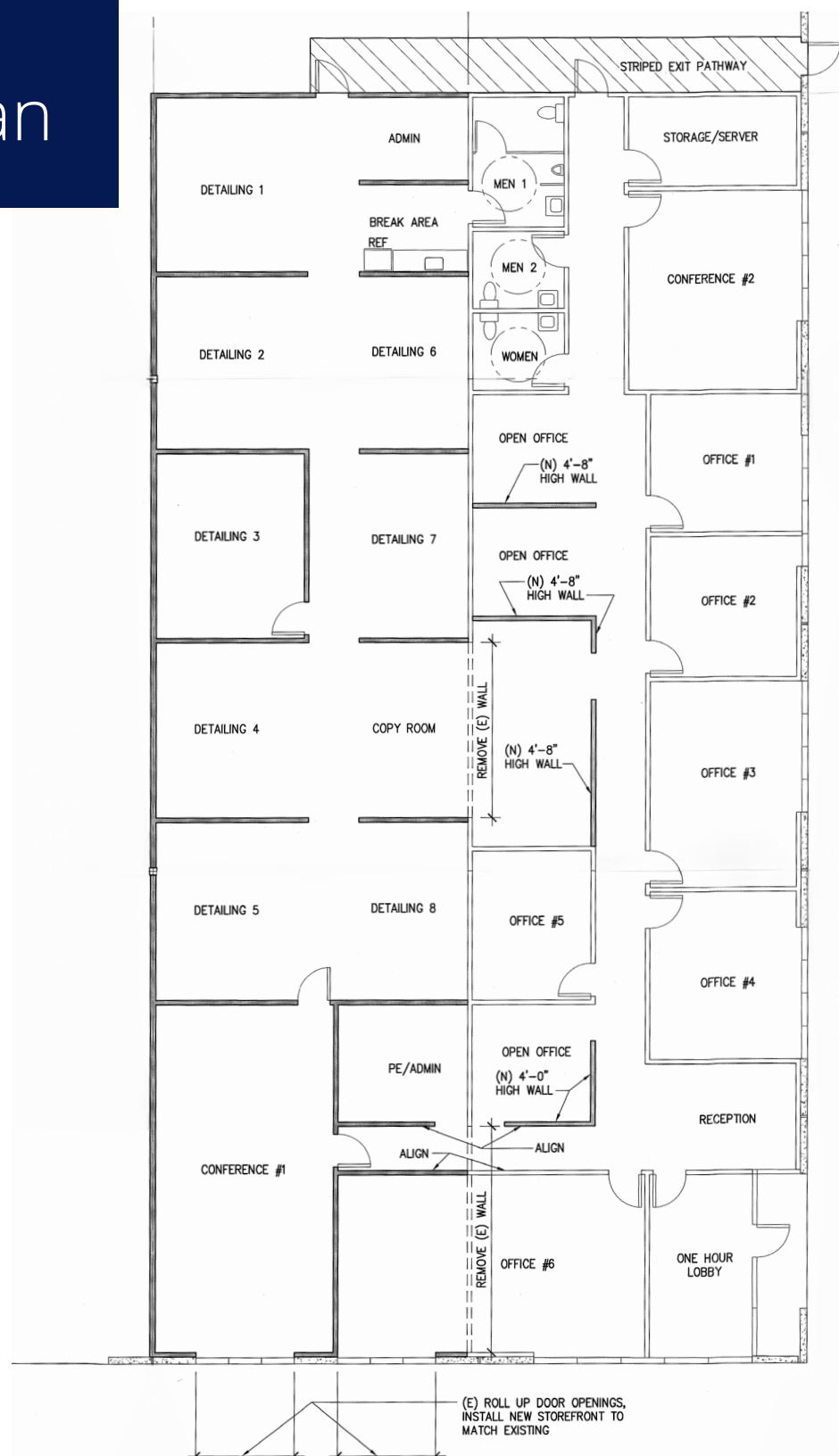
- **Size:** ±65,250 SF
- **Structure Type:** Concrete tilt-up
- **Acres:** ±3.39 AC
- **APN:** 465-174-25-1
- **Dimensions:** ±300' (EW) x ±225' (NS)
- **Office:** Main pod (east) ±6,900 SF and shipping/receiving of ±1,540 SF (west). Total office ±8,440 SF
- **Sprinklers:** .60/3,000 SF (1,800 gal/min)
- **Power:** 1,000 amps @ 277/480 (Underground conduits in place to increase power to 1,600 amps @ 277/480)
- **Columns:** ±45' deep (NS) ±60'
- **Skylights:** Combination skylight, smoke hatch, and ventilator
- **Roof insulation:** R-19
- **Lighting:** Metal halide
- **Vertical Clearance:** ±24' to ±26'
- **Docks:** Side loader with 11 (±9' x ±10') vertical track docks on south side and 1 (±9' x ±10') vertical track dock on west side
- **Grade Level Doors:** 2 grade level vertical track doors (±12' x ±14' wide) at east and west sides of building
- **Staging:** ±144'
- **Concrete Apron:** ±45'
- **Parking:** ±68 stalls
- **Zoning:** Industrial
- **Year Built:** 1997
- **Operating Expenses and CAM:** 2026 Operating Expenses and CAM are estimated to be \$.17 PSF/Mo



East Office Pod Floor Plan

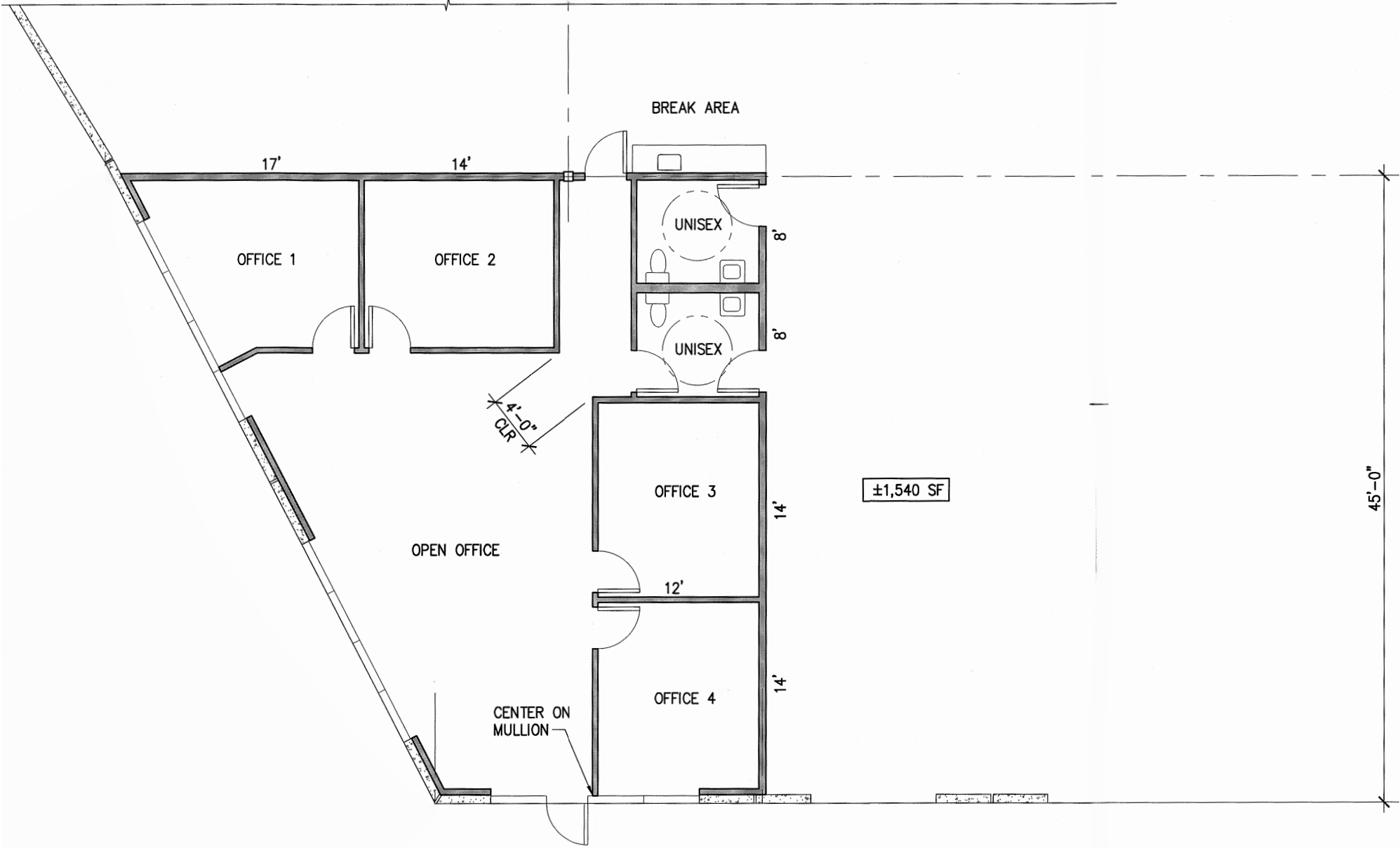
East office pod:

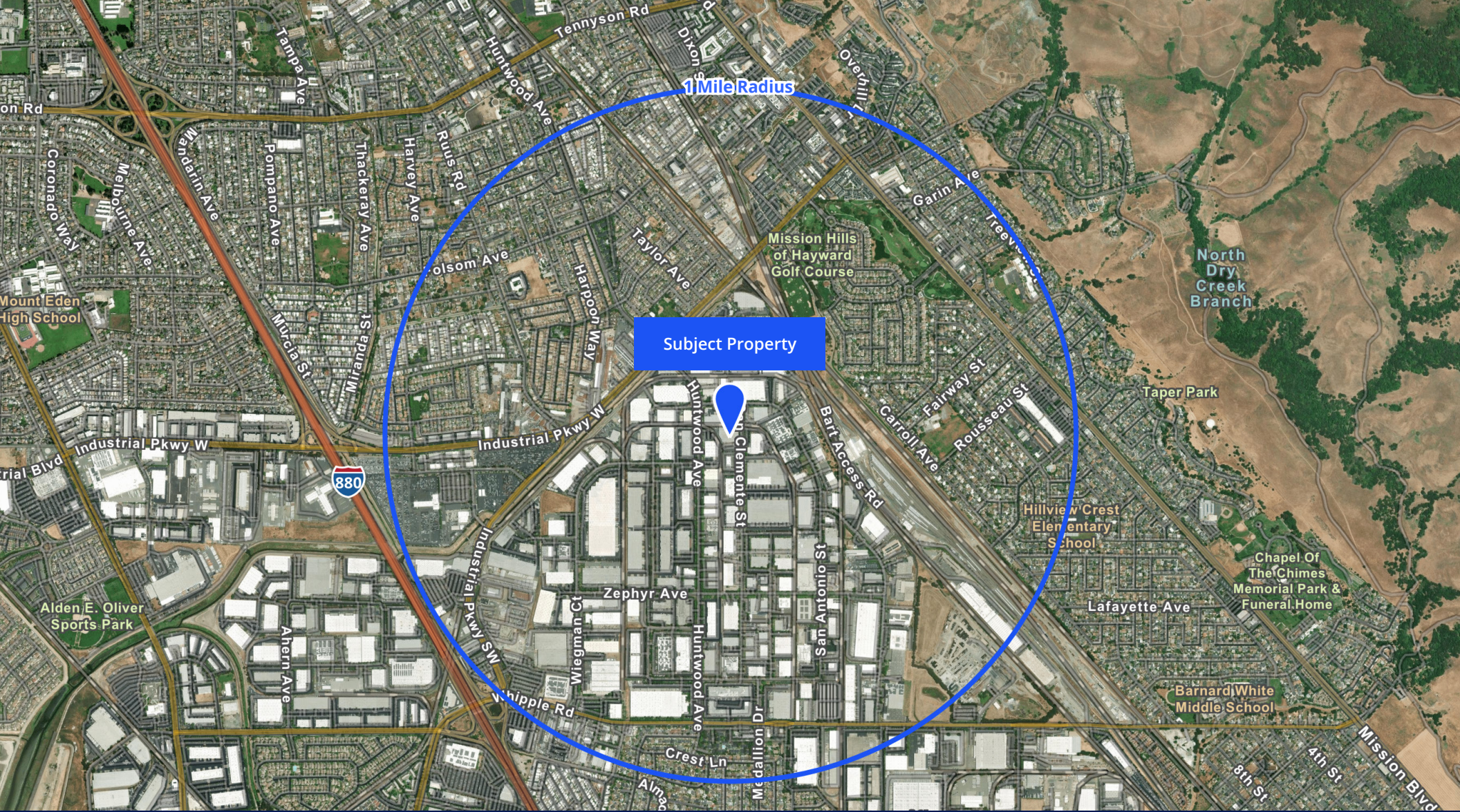
- Original construction: ±3,545 SF
- Expansion: ±3,360SF
- Total office: ±6,900 SF



This document has been prepared by Colliers for advertising and general information only. Colliers makes no guarantees, representations or warranties of any kind, expressed or implied, regarding the information including, but not limited to, warranties of content, accuracy and reliability. Any interested party should undertake their own inquiries as to the accuracy of the information. Colliers excludes unequivocally all inferred or implied terms, conditions and warranties arising out of this document and excludes all liability for loss and damages arising there from. This publication is the copyrighted property of Colliers and/or its licensor(s). © 2026. All rights reserved. This communication is not intended to cause or induce breach of an existing listing agreement.

West Office Pod Floor Plan





Subject Property

1 Mile Radius

Demographics



Current total population
16,421



Median household income
\$130,136



Total businesses
875



Total employees
9,990

Phil Garrett, SIOR

Executive Vice President
CA License No. 00844836
phil.garrett@colliers.com
+1 707 372 1036

Casey Ricksen, SIOR

Executive Vice President
CA License No. 00907075
casey.ricksen@colliers.com
+1 510 325 8242



Accelerating success.



This document has been prepared by Colliers for advertising and general information only. Colliers makes no guarantees, representations or warranties of any kind, expressed or implied, regarding the information including, but not limited to, warranties of content, accuracy and reliability. Any interested party should undertake their own inquiries as to the accuracy of the information. Colliers excludes unequivocally all inferred or implied terms, conditions and warranties arising out of this document and excludes all liability for loss and damages arising therefrom. This publication is the copyrighted property of Colliers and /or its licensor(s). © 2026. All rights reserved. This communication is not intended to cause or induce breach of an existing listing agreement.