

FRANCIS & REEVE

BUSINESS ENVIRONMENT

1408 BLUE HERON ROAD
VIRGINIA BEACH, VIRGINIA 23454

(757) 496-5067

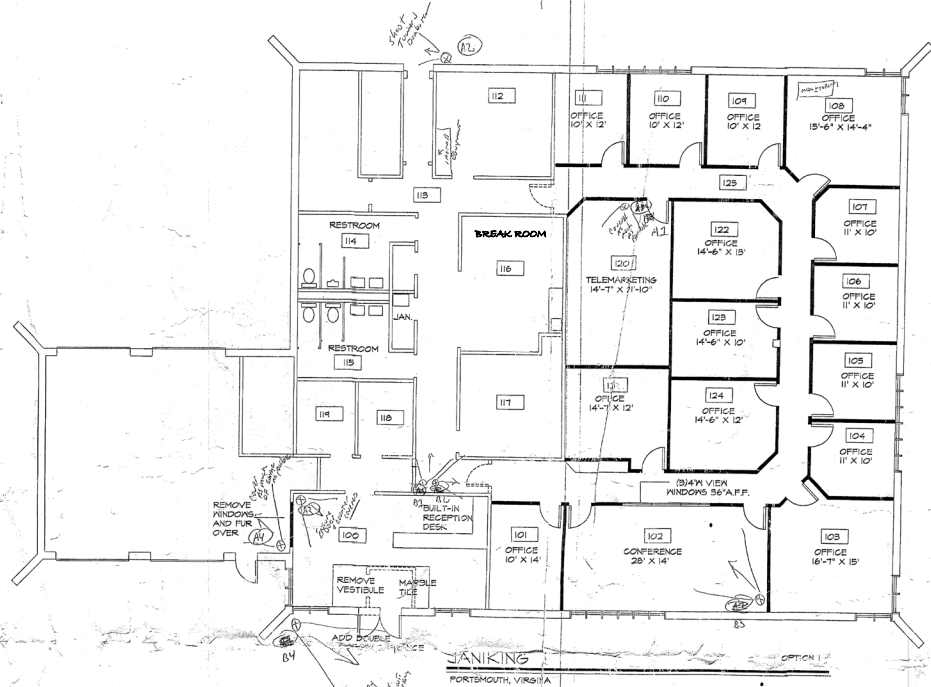
TENANT DATE

Project No. JANKINS
Date 1/16/01
Scale 1/8" = 1'-0"
Area 7108 SF
Drawn L. FRANCIS

REVISIONS		
MARK	DATE	INITIAL

JANKINS
 PORTSMOUTH, VIRGINIA
 CONSTRUCTION PLAN

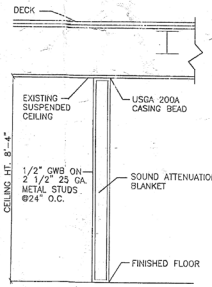
A-1



Camera Layout

FINISH SCHEDULE

ROOM NO.	ROOM NAME	FLOOR	BASE	WALLS	TRIM	REMARKS
100	RECEPTION	CPT	MARBLE	VINYL	VWG	PAINT
101	OFFICE	CPT	VINYL	VINYL	PAINT	PAINT
102	CONFERENCE	CPT	VINYL	VWG	PAINT	PAINT
103	OFFICE	CPT	VINYL	VWG	PAINT	PAINT
104	OFFICE	CPT	VINYL	PAINT	PAINT	PAINT
105	OFFICE	CPT	VINYL	PAINT	PAINT	PAINT
106	OFFICE	CPT	VINYL	PAINT	PAINT	PAINT
107	OFFICE	CPT	VINYL	PAINT	PAINT	PAINT
108	OFFICE	CPT	VINYL	VWG	PAINT	PAINT
109	OFFICE	CPT	VINYL	PAINT	PAINT	PAINT
110	OFFICE	CPT	VINYL	PAINT	PAINT	PAINT
111	OFFICE	CPT	VINYL	PAINT	PAINT	PAINT
112	OFFICE	CPT	VINYL	PAINT	PAINT	PAINT
113	CORRIDOR	CPT	VINYL	VWG	PAINT	PAINT
114	RESTROOM	CPT	CERAMIC	VINYL	VWG	PAINT
115	RESTROOM	CPT	CERAMIC	VINYL	VWG	PAINT
116	LOUNGE	VGT	VINYL	PAINT	PAINT	PAINT
117	OFFICE	CPT	VINYL	PAINT	PAINT	PAINT
118	OFFICE	CPT	VINYL	PAINT	PAINT	PAINT
119	OFFICE	CPT	VINYL	PAINT	PAINT	PAINT
120	TELEMARKETING	CPT	VINYL	PAINT	PAINT	PAINT
121	OFFICE	CPT	VINYL	PAINT	PAINT	PAINT
122	OFFICE	CPT	VINYL	PAINT	PAINT	PAINT
123	OFFICE	CPT	VINYL	PAINT	PAINT	PAINT
124	OFFICE	CPT	VINYL	PAINT	PAINT	PAINT
125	CORRIDOR	CPT	VINYL	VWG	PAINT	PAINT



WALL TYPE A
NOT TO SCALE

LEGEND:
 ——— EXISTING CONSTRUCTION TO REMAIN
 ——— NEW CONSTRUCTION
 CONSTRUCTION DEMOLITION

FINISH NOTES:

- REMOVE FLOORCOVERINGS AND WALLCOVERINGS THROUGHOUT (UNLESS OTHERWISE NOTED) AND PREPARE SURFACES TO RECEIVE NEW FINISH.
- ALL CARPET TO BE INSTALLED DIRECT GLUE DOWN.