

For Lease

32,400 SF AVAILABLE

WEST BY NORTHWEST BUSINESS PARK

6315 West by Northwest Blvd. | Suite 300
Houston, TX 77040



Park Overview

- Master-planned business park
- Outstanding corporate identity
- Attractive glass storefront entry
- Convenient access to Hwy. 290 and Beltway 8
- End-cap space



For leasing information, please contact Stream Realty Partners
JACK RATHE | jack.rathe@streamrealty.com | 972.655.9067-
MEG ZSCHAPPEL | meg.zschappel@streamrealty.com | 832.316.1053
NATALIE GILBERT | natalie.gilbert@streamrealty.com | 713.332.3413



For Lease

32,400 SF AVAILABLE

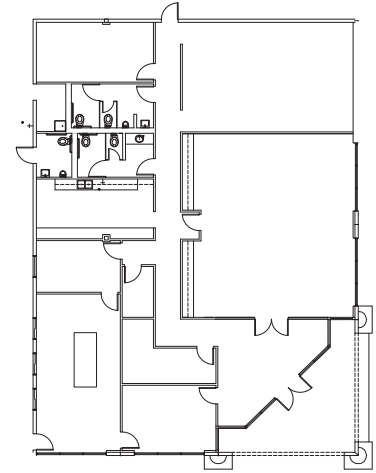
WEST BY NORTHWEST BUSINESS PARK

6315 West by Northwest Blvd. | Suite 300
Houston, TX 77040

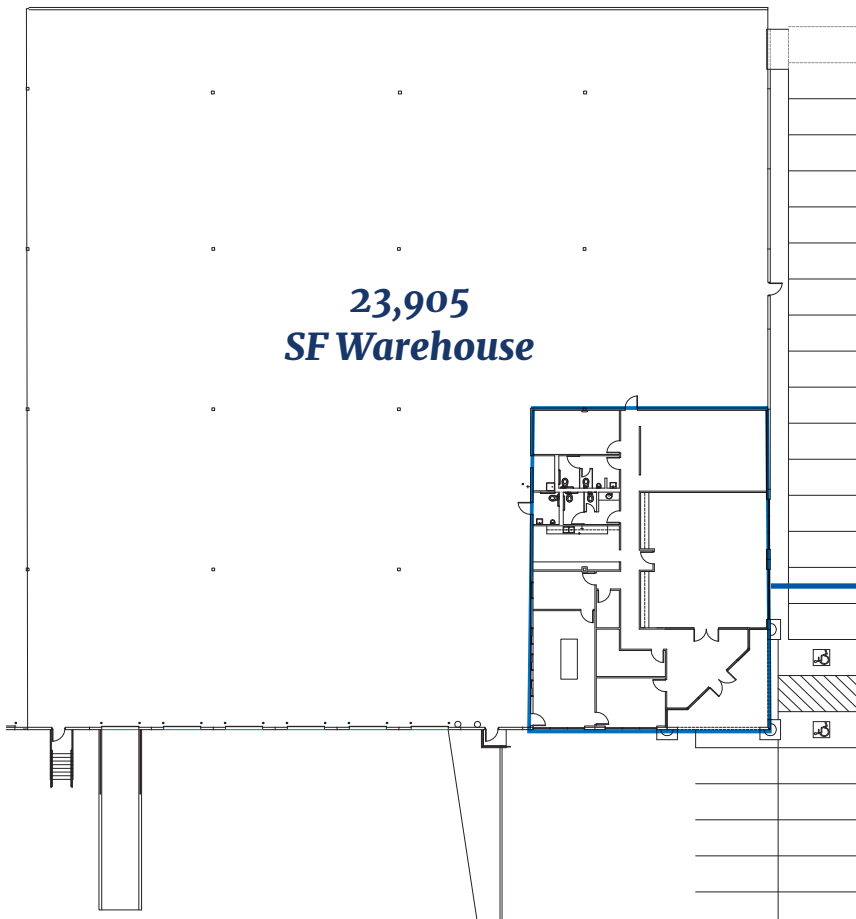
Suite 300 Overview

- 32,400 SF available
- 28,152 SF warehouse
- 4,248 SF office
- Fully sprinklered (ESFR)
- 24' clear height
- Five (5) dock-high doors
- One (1) drive-in ramp
- End-cap space

1,295 SF Office



23,905 SF Warehouse



For leasing information, please contact Stream Realty Partners

JACK RATHE | jack.rathe@streamrealty.com | 972.655.9067-

MEG ZSCHAPPEL | meg.zschappel@streamrealty.com | 832.316.1053

NATALIE GILBERT | natalie.gilbert@streamrealty.com | 713.332.3413



For Lease

32,400 SF AVAILABLE

WEST BY NORTHWEST BUSINESS PARK

6315 West by Northwest Blvd. | Suite 300
Houston, TX 77040



For leasing information, please contact Stream Realty Partners
JACK RATHE | jack.rathe@streamrealty.com | 972.655.9067-
MEG ZSCHAPPEL | meg.zschappel@streamrealty.com | 832.316.1053
NATALIE GILBERT | natalie.gilbert@streamrealty.com | 713.332.3413

