

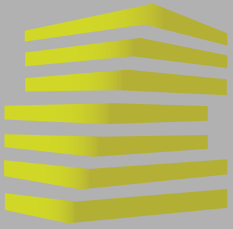
# CARLYLE PLAZA

BELLEVILLE, IL

CLUB FITNESS



**LOCATION.**  
commercial real estate

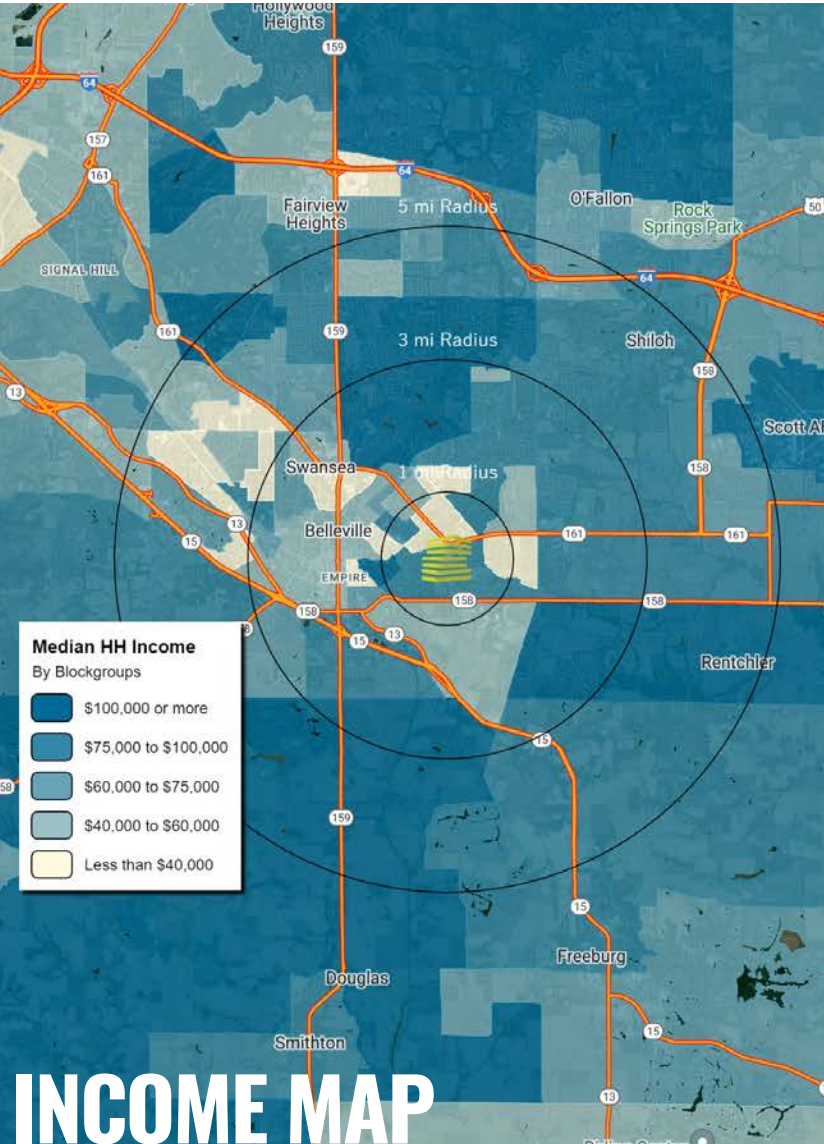


# CARLYLE PLAZA

## NEIGHBORHOOD VIBE

TONY MOON  
314.818.1567 (DIRECT)  
314.560.0781 (MOBILE)  
Tony@LocationCRE.com

ALEX APTER  
314.818.1562 (DIRECT)  
314.488.5900 (MOBILE)  
Alex@LocationCRE.com



# INCOME MAP

### TRADE AREA OVERVIEW

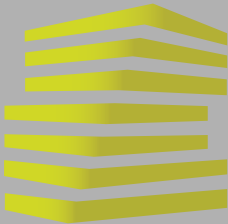
Belleville is a city in St. Clair County, Illinois, United States, co-extensive with Belleville Township. Belleville is the eighth-most populated Illinois city outside of the Chicago Metropolitan Area and the most populated city south of Springfield in the state of Illinois. It is the county seat of St. Clair County, and the seat of the Roman Catholic Diocese of Belleville and the National Shrine of Our Lady of the Snows.

Belleville is the most populated city in the Metro-East region of the St. Louis Metropolitan Area and in Southern Illinois. Due to its proximity to Scott Air Force Base, the population receives a boost from military and federal civilian personnel, defense contractors, and military retirees. Lindenwood University and Southwestern Illinois College have campuses located in Belleville. The city's top employers include Scott Air Force Base, Memorial Hospital, and Southwestern Illinois College.

### DEMOGRAPHICS

	1 mile	3 miles	5 miles
<b>POPULATION</b>	8,915	47,627	92,715
<b>HOUSEHOLDS</b>	3,924	20,114	39,692
<b>EMPLOYEES</b>	2,604	16,100	32,001
<b>MED HH INCOME</b>	\$63,135	\$76,907	\$78,971

### AREA RETAIL | RESTAURANTS



# CARLYLE PLAZA

## SITE PLAN

TONY MOON

314.818.1567 (DIRECT)  
314.560.0781 (MOBILE)  
Tony@LocationCRE.com

ALEX APTER

314.818.1562 (DIRECT)  
314.488.5900 (MOBILE)  
Alex@LocationCRE.com



- JUNIOR ANCHOR SPACE AVAILABLE. 17,986 SF
- JOIN DOLLAR TREE, O'REILLY AUTO, AND OLLIES
- SMALL SHOP SPACE AVAILABLE
- LOCATED ON HEAVILY TRAVELED CARLYLE AVENUE NEAR SOUTHWESTERN ILLINOIS COLLEGE
- SURROUNDED BY AN EXTREMELY DENSE RESIDENTIAL POPULATION
- CALL BROKER FOR PRICING

**360 VIRTUAL TOURS**  
AVAILABLE SUITES

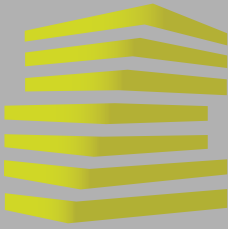
- SUITE 3 SUITE 13
- SUITE 4 SUITE 14
- SUITE 6 SUITE 15
- SUITE 7 SUITE 16
- SUITE 8

SUITE	TENANT	SF	SUITE	TENANT	SF	SUITE	TENANT	SF
1	NOT OWNED	126,846	7	AVAILABLE	1,500	14	AVAILABLE	4,000
2a	O'Reilly Auto	41,342	8	AVAILABLE	2,400	15	AVAILABLE	2,000
2b	Ollies	29,109	9	China Town	1,800	16	AVAILABLE	2,000
3	AVAILABLE	17,986	10	Adapt Health	2,400	17	Club Fitness	25,397
4	AVAILABLE	3,300	11	Adapt Health	4,400	18	AVAILABLE	5,856
5	Creative Style	2,700	12	AVAILABLE	4,400	19	Dollar Tree	5,952
6	AVAILABLE	1,800	13	AVAILABLE	4,000	20	Dollar Tree	8,436



www.LocationCRE.com

THE INFORMATION IN THIS FLYER HAS BEEN OBTAINED FROM SOURCES BELIEVED RELIABLE. WHILE WE DO NOT DOUBT ITS ACCURACY, WE HAVE NOT VERIFIED IT AND MAKE NO GUARANTEE ABOUT IT. IT IS YOUR RESPONSIBILITY TO INDEPENDENTLY CONFIRM ITS ACCURACY AND COMPLETENESS. ANY PROJECTIONS, OPINIONS, ASSUMPTIONS OR ESTIMATES USED ARE FOR EXAMPLE ONLY AND DO NOT REPRESENT THE CURRENT OR FUTURE PERFORMANCE OF THE PROPERTY. THE VALUE OF THIS TRANSACTION TO YOU DEPENDS ON TAX AND OTHER FACTORS WHICH SHOULD BE EVALUATED BY YOUR TAX, FINANCIAL AND LEGAL ADVISORS. YOU AND YOUR ADVISORS SHOULD CONDUCT A CAREFUL, INDEPENDENT INVESTIGATION OF THE PROPERTY TO DETERMINE TO YOUR SATISFACTION THE SUITABILITY OF THE PROPERTY FOR YOUR NEEDS.



# CARLYLE PLAZA

## ZOOM AERIAL

TONY MOON

314.818.1567 (DIRECT)  
314.560.0781 (MOBILE)  
Tony@LocationCRE.com

ALEX APTER

314.818.1562 (DIRECT)  
314.488.5900 (MOBILE)  
Alex@LocationCRE.com

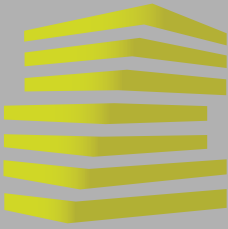


**LOCATION.**  
commercial real estate



[www.LocationCRE.com](http://www.LocationCRE.com)

THE INFORMATION IN THIS FLYER HAS BEEN OBTAINED FROM SOURCES BELIEVED RELIABLE. WHILE WE DO NOT DOUBT ITS ACCURACY, WE HAVE NOT VERIFIED IT AND MAKE NO GUARANTEE ABOUT IT. IT IS YOUR RESPONSIBILITY TO INDEPENDENTLY CONFIRM ITS ACCURACY AND COMPLETENESS. ANY PROJECTIONS, OPINIONS, ASSUMPTIONS OR ESTIMATES USED ARE FOR EXAMPLE ONLY AND DO NOT REPRESENT THE CURRENT OR FUTURE PERFORMANCE OF THE PROPERTY. THE VALUE OF THIS TRANSACTION TO YOU DEPENDS ON TAX AND OTHER FACTORS WHICH SHOULD BE EVALUATED BY YOUR TAX, FINANCIAL AND LEGAL ADVISORS. YOU AND YOUR ADVISORS SHOULD CONDUCT A CAREFUL, INDEPENDENT INVESTIGATION OF THE PROPERTY TO DETERMINE TO YOUR SATISFACTION THE SUITABILITY OF THE PROPERTY FOR YOUR NEEDS.



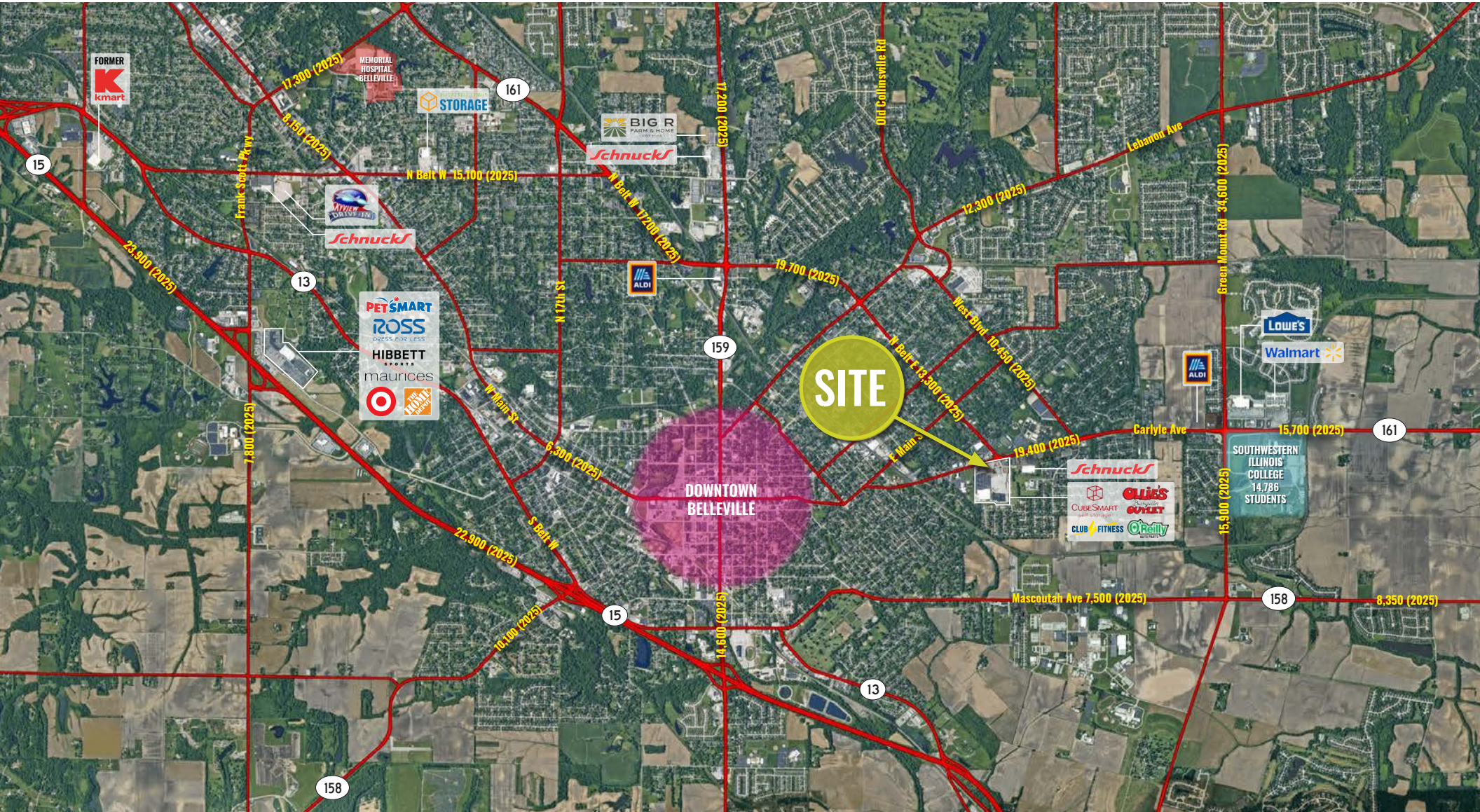
# CARLYLE PLAZA MARKET AERIAL

TONY MOON

314.818.1567 (DIRECT)  
314.560.0781 (MOBILE)  
Tony@LocationCRE.com

ALEX APTER

314.818.1562 (DIRECT)  
314.488.5900 (MOBILE)  
Alex@LocationCRE.com



## LOCATION. commercial real estate



[www.LocationCRE.com](http://www.LocationCRE.com)

THE INFORMATION IN THIS FLYER HAS BEEN OBTAINED FROM SOURCES BELIEVED RELIABLE. WHILE WE DO NOT DOUBT ITS ACCURACY, WE HAVE NOT VERIFIED IT AND MAKE NO GUARANTEE ABOUT IT. IT IS YOUR RESPONSIBILITY TO INDEPENDENTLY CONFIRM ITS ACCURACY AND COMPLETENESS. ANY PROJECTIONS, OPINIONS, ASSUMPTIONS OR ESTIMATES USED ARE FOR EXAMPLE ONLY AND DO NOT REPRESENT THE CURRENT OR FUTURE PERFORMANCE OF THE PROPERTY. THE VALUE OF THIS TRANSACTION TO YOU DEPENDS ON TAX AND OTHER FACTORS WHICH SHOULD BE EVALUATED BY YOUR TAX, FINANCIAL AND LEGAL ADVISORS. YOU AND YOUR ADVISORS SHOULD CONDUCT A CAREFUL, INDEPENDENT INVESTIGATION OF THE PROPERTY TO DETERMINE TO YOUR SATISFACTION THE SUITABILITY OF THE PROPERTY FOR YOUR NEEDS.