

TO LET

- ✓ Flexible lease terms available
- ✓ Benefits ventilation
- ✓ Central city centre location
- ✓ Close to Exeter Central Station
- ✓ Ideal start-up location



183 Sidwell Street, Exeter EX4 6RD

Retail Unit To Let

1,216 Sq Ft
(113 Sq M)



DESCRIPTION

This three story, mid-terrace unit consists of ground floor seating and kitchen area, benefitting from ventilation. There is also a disabled W/C to the rear and loading doors. The first floor offers further seating or storage space with toilets on the second floor.

LOCATION

The premises occupy a prominent location being close to Princesshay, John Lewis and Next and within 5 minutes walk to Exeter Central Station. The street is also home to an existing wide range of local independent traders.

ACCOMMODATION

Net Internal Areas	sq ft	sq m
Total	1,216	113

TERMS

The unit is available on a full repairing and insuring lease, and will be excluded from the Landlord and Tenant Act 1954.

BUSINESS RATES

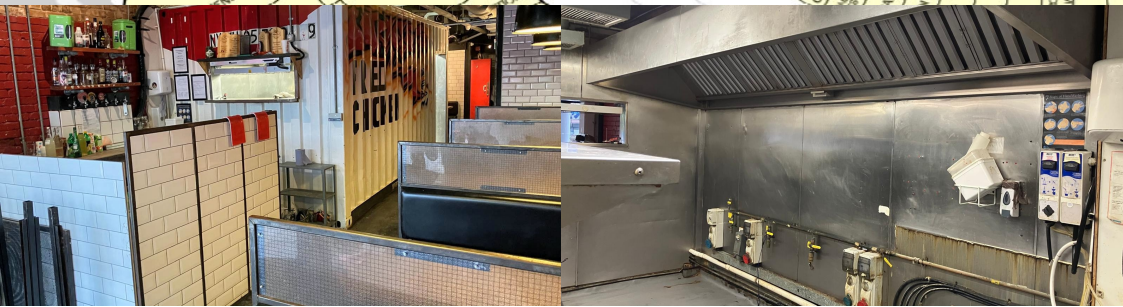
For business rating information please visit the Valuation Office Agency website www.voa.gov.uk.

EPC

C-73

VAT

All prices, premiums and rents, etc are quoted exclusive of VAT at the prevailing rate.



VIEWING & FURTHER INFORMATION

Viewing strictly by prior appointment:

lsh.co.uk

© Lambert Smith Hampton. Details of Lambert Smith Hampton (LSH) can be viewed on our website www.lsh.co.uk This document is for general informative purposes only. The information in it is believed to be correct, but no express or implied representation or warranty is made by LSH as to its accuracy or completeness, and the opinions in it constitute our judgement as of this date but are subject to change. Reliance should not be placed upon the information, forecasts and opinions for any purpose, and no responsibility or liability, whether in negligence or otherwise, is accepted by LSH or by any of its directors, officers, employees, agents or representatives for any loss arising from any use of this document or its contents or otherwise arising in connection with this document. All rights reserved. No part of this document may be transmitted or reproduced in any material form by any means, electronic, recording, mechanical, photocopying or otherwise, or stored in any information storage or retrieval system of any nature, without the prior written permission of the copyright holder, except in accordance with the provisions of the Copyright Designs and Patents Act 1988. Warning: the doing of an unauthorised act in relation to a copyright work may result in both a civil claim for damages and criminal prosecution. Regulated by RICS 05-Nov-2025



Sarah Butcher
07716 085894
sbutcher@lsh.co.uk

Tony Fisher
01392 798047
tfisher@lsh.co.uk