

REGENCY CENTER | FOR LEASE

8 Building Park with ±46,007 SF Available



JORDAN CAMP
404.969.9487
jordan.camp@oakleyrep.com

REID HANNER
404.281.7068
reid.hanner@oakleyrep.com

JOHN STELLING
404.259.6430
john.stelling@oakleyrep.com

 **oakley**
REAL ESTATE PARTNERS

REGENCY CENTER OVERVIEW

Strategically located in Norcross, Regency Center is a prime industrial park that offers unparalleled access to major transportation arteries. Just 1.4 miles from Interstate-85 and 3.8 miles from Atlanta's Perimeter, the park provides a competitive edge for a wide range of users.

Situated mere feet from Jimmy Carter Boulevard, a major industrial corridor in the Southeast, and only 1.6 miles from Peachtree Industrial Boulevard, Regency Center is ideally positioned for efficient last-mile delivery and operational logistics within the greater Atlanta market.

As a suburban infill location, Regency Center is surrounded by a dense population and a robust business community, with more than 3,090 businesses and 47,400 workers nearby. The park is also located within a Qualified Opportunity Zone and the Gateway85 Community Improvement District (CID), which includes over \$1 billion in commercial property value.

ADDRESS

6300 | 6290 Jimmy Carter Boulevard
6190 | 6230 | 6350 | 6375 | 6325 | 6215 Regency Parkway
Norcross, GA 30071

PARK SQUARE FOOTAGE

±264,339 SF
Across 8 Buildings

AVAILABLE SQUARE FOOTAGE

±46,007 SF
Across 5 Buildings



PARK AVAILABILITES

Regency Center



BUILDING 1
NONE AVAILABLE

BUILDING 2
SUITE 200 ±7,932 SF 1 DH

BUILDING 3
SUITE 300 ±12,029 SF 1 DH
1 DI

BUILDING 4
SUITE 400 ±18,598 SF 3 DH
1 DI

BUILDING 5
SUITE 500 ±4,992 SF 1 DH
1 DI

BUILDING 7
NONE AVAILABLE

BUILDING 8
NONE AVAILABLE

BUILDING 9
SUITE 975 ±2,456 SF 1 DH

PARK PHOTOS

Regency Center

6300 JIMMY CARTER | BLDG. 1



6290 JIMMY CARTER | BLDG. 2



6190 REGENCY PARKWAY | BLDG. 3



6230 REGENCY PARKWAY | BLDG. 4



6350 REGENCY PARKWAY | BLDG. 5



6375 REGENCY PARKWAY | BLDG. 7



6325 REGENCY PARKWAY | BLDG. 8



6215 REGENCY PARKWAY | BLDG. 9



PARK LOGISTICS

Regency Center



SOUTHEAST REGIONAL ACCESS

LOCATION	DISTANCE
Interstate 85	1.4 Miles
Interstate 285	3.8 Miles
Hartsfield-Jackson	27 Miles
Greenville, SC	129 Miles
Birmingham, AL	166 Miles
Charlotte, NC	230 Miles
Savannah, GA	263 Miles
Charleston, SC	305 Miles

PARK ACCESS

Regency Center

PEA CHTREE INDUSTRIAL BOULEVARD

BUFORD HIGHWAY

JIMMY CARTER BOULEVARD

SITE



6300 JIMMY CARTER BOULEVARD

Regency Center | Building 1



1984

YEAR BUILT

±32,018 SF

TOTAL BUILDING SIZE

2 DI

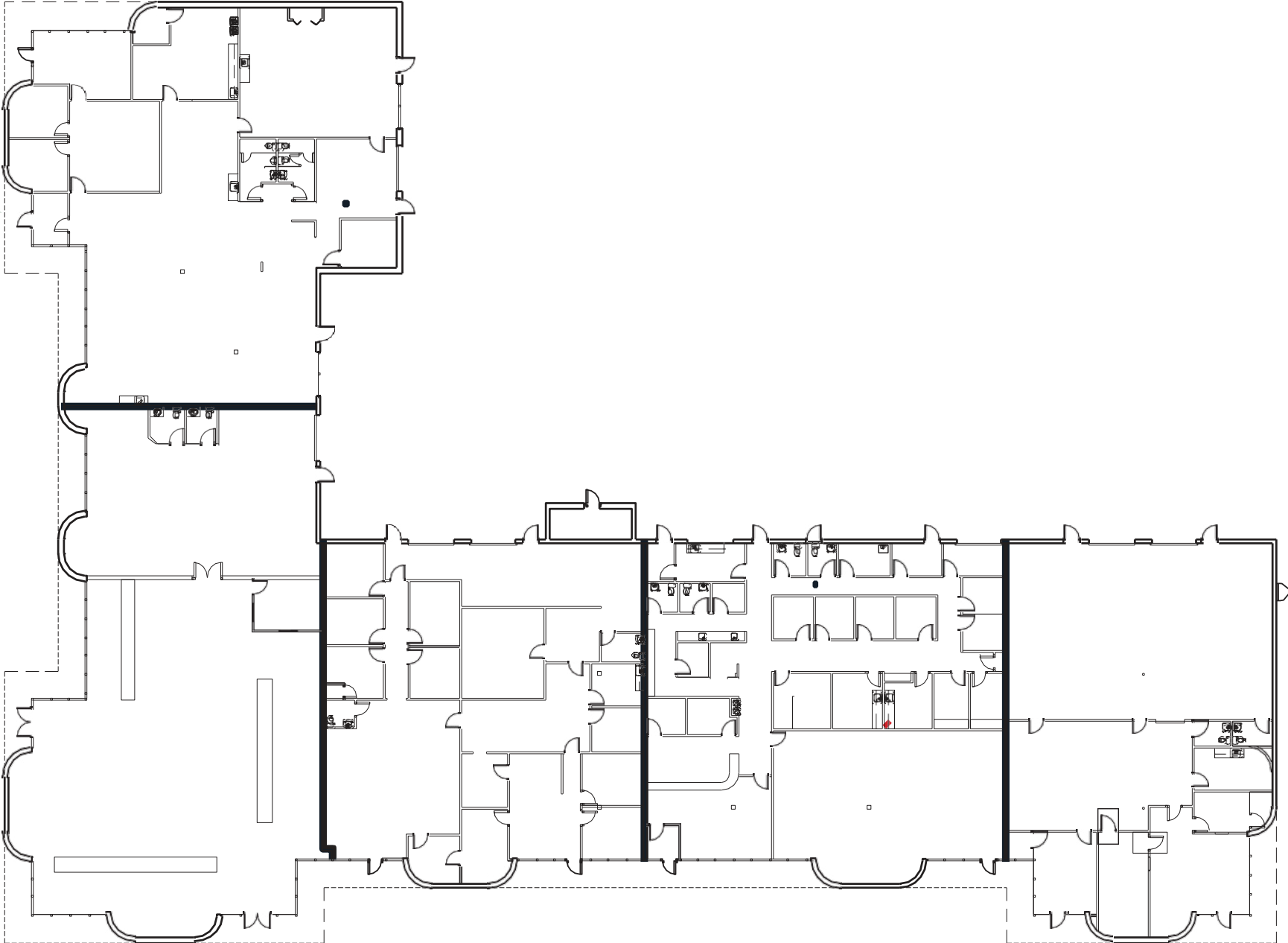
DOORS

18'

CLEAR HEIGHT

6300 JIMMY CARTER BOULEVARD

Regency Center | Building 1

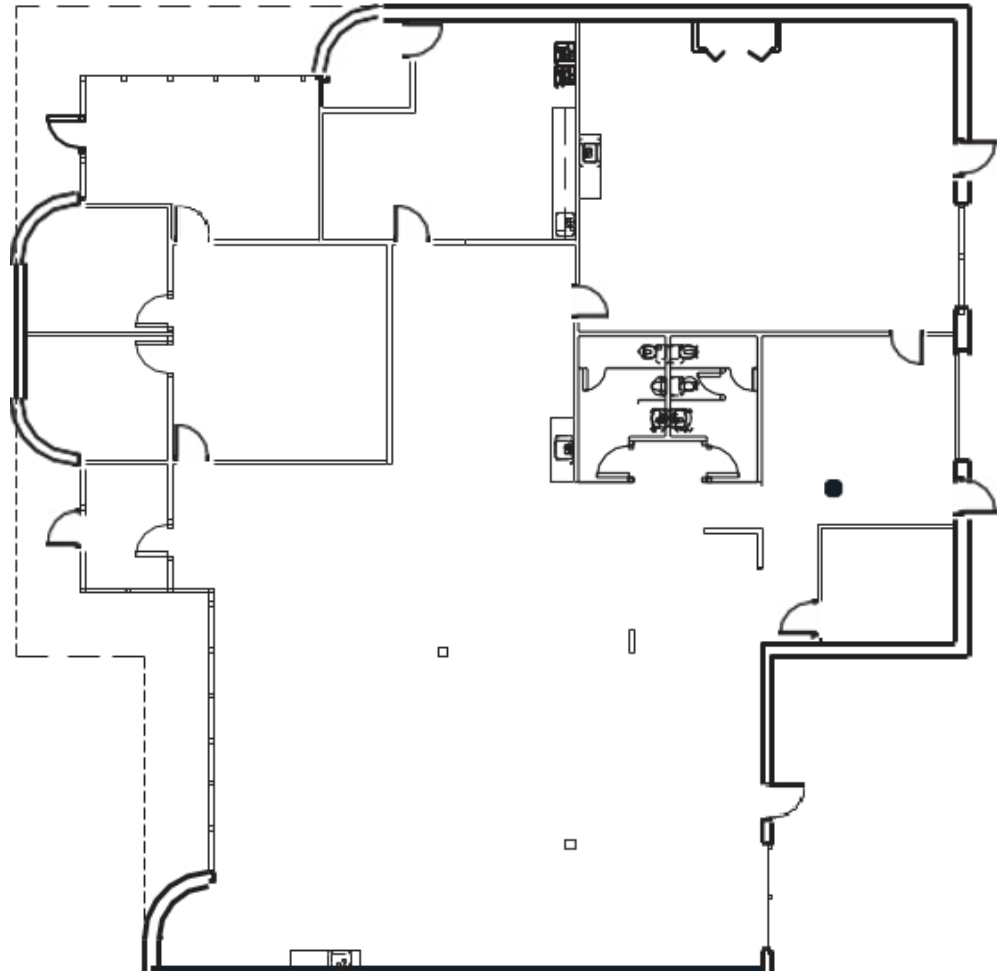


6300 JIMMY CARTER BOULEVARD

Regency Center | Building 1 – Suite 100

SPACE FEATURES:

- Building Size: 32,018 SF
- Available Size: 7,182 SF
- Office: ~4,300 SF
- Clear Height: 18'
- Drive-In Door: 1
- Rear Load
- Frontage on Jimmy Carter Blvd



JORDAN CAMP

404.969.9487

jordan.camp@oakleyrep.com

REID HANNER

404.281.7068

reid.hanner@oakleyrep.com

JOHN STELLING

404.259.6430

john.stelling@oakleyrep.com

 **oakley**
REAL ESTATE PARTNERS

6290 JIMMY CARTER BOULEVARD

Regency Center | Building 2



1984

YEAR BUILT

±40,369 SF

TOTAL BUILDING SIZE

5 DH

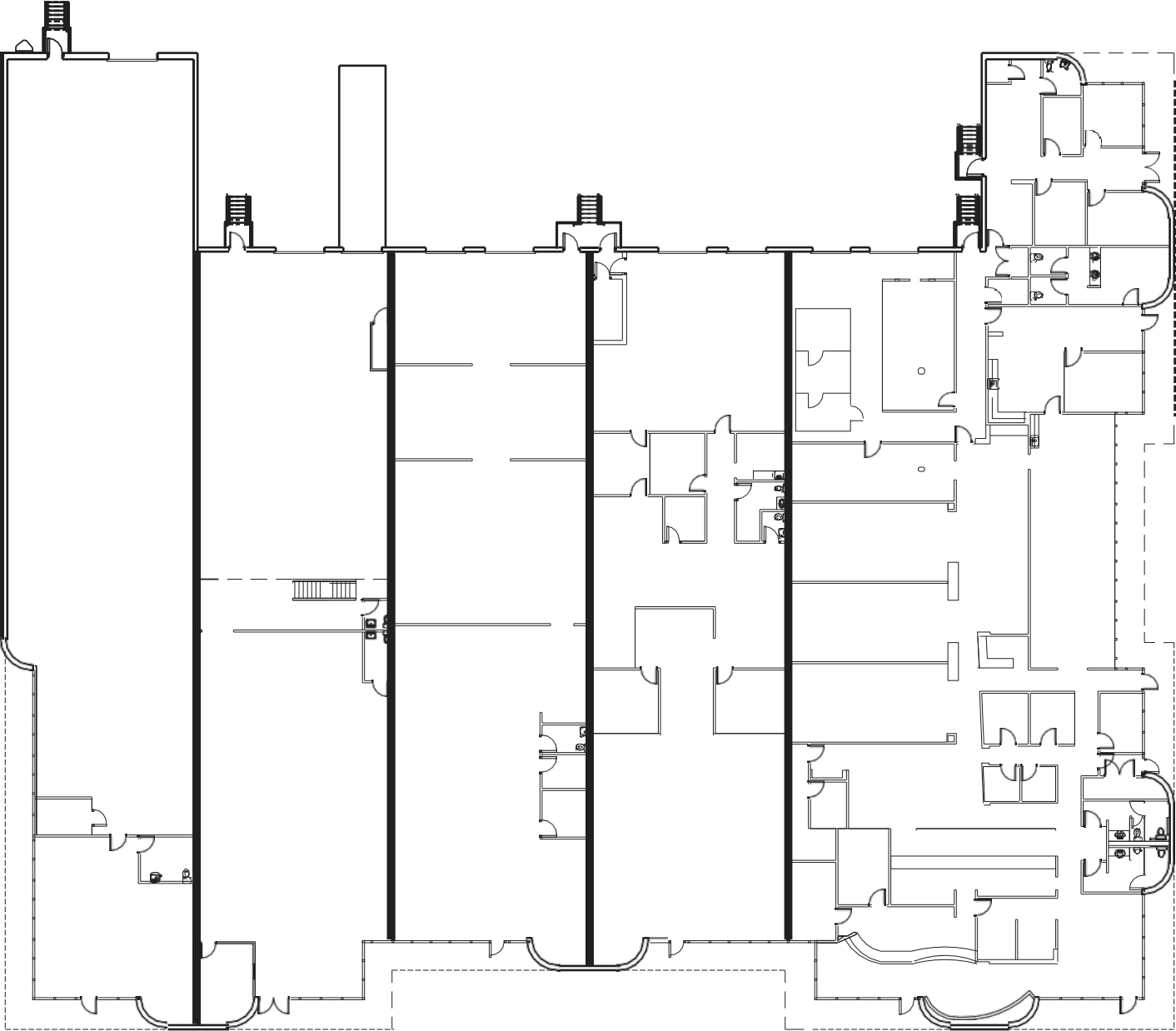
DOORS

16'

CLEAR HEIGHT

6290 JIMMY CARTER BOULEVARD

Regency Center | Building 2

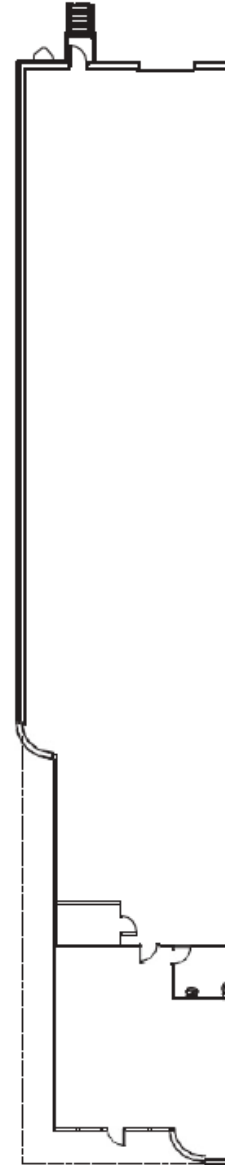


6290 JIMMY CARTER BOULEVARD

Regency Center | Building 2 – Suite 200

SPACE FEATURES:

- Building Size: 40,369 SF
- Available Size: 7,932 SF
- Office: 1,588 SF
- Clear Height: 16'
- Dock High Door: 1
- Rear Load
- Frontage on Jimmy Carter Blvd



JORDAN CAMP

404.969.9487

jordan.camp@oakleyrep.com

REID HANNER

404.281.7068

reid.hanner@oakleyrep.com

JOHN STELLING

404.259.6430

john.stelling@oakleyrep.com

 **oakley**
REAL ESTATE PARTNERS

6190 REGENCY PARKWAY

Regency Center | Building 3



1984

YEAR BUILT

±58,733 SF

TOTAL BUILDING SIZE

1 DH | 1 DL

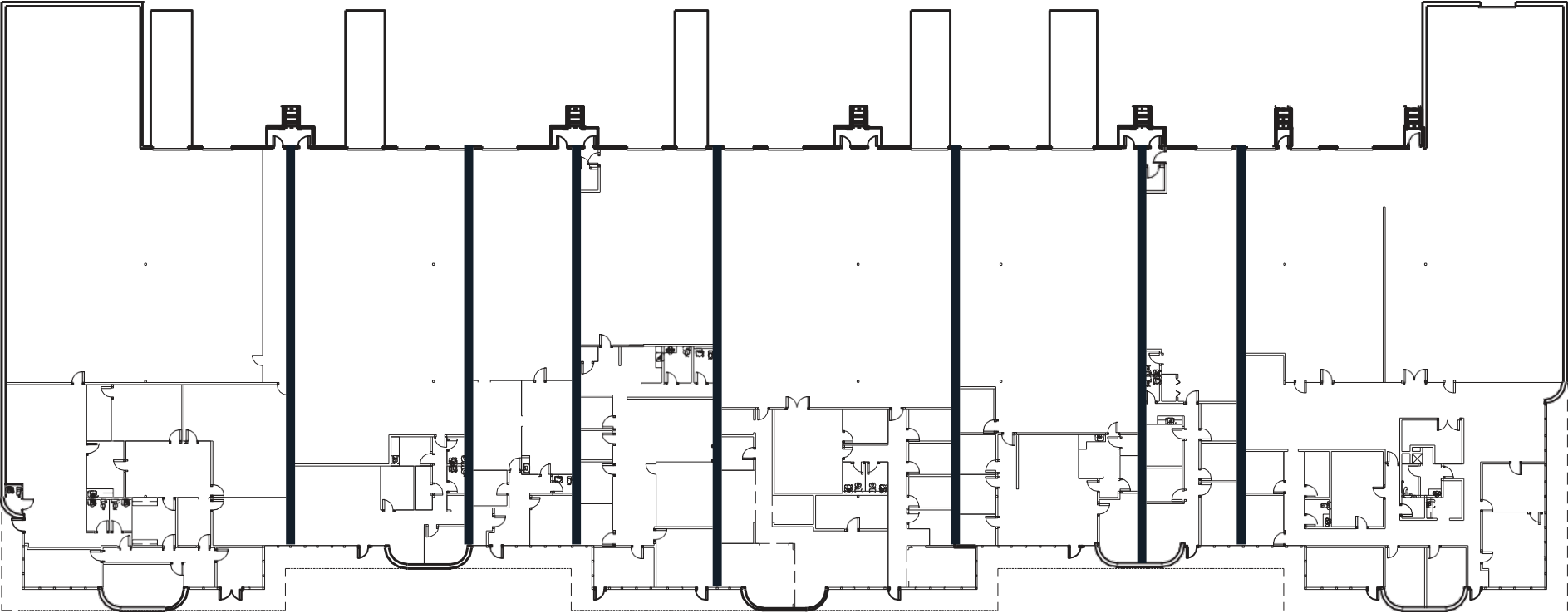
DOORS

18'

CLEAR HEIGHT

6190 REGENCY PARKWAY

Regency Center | Building 3

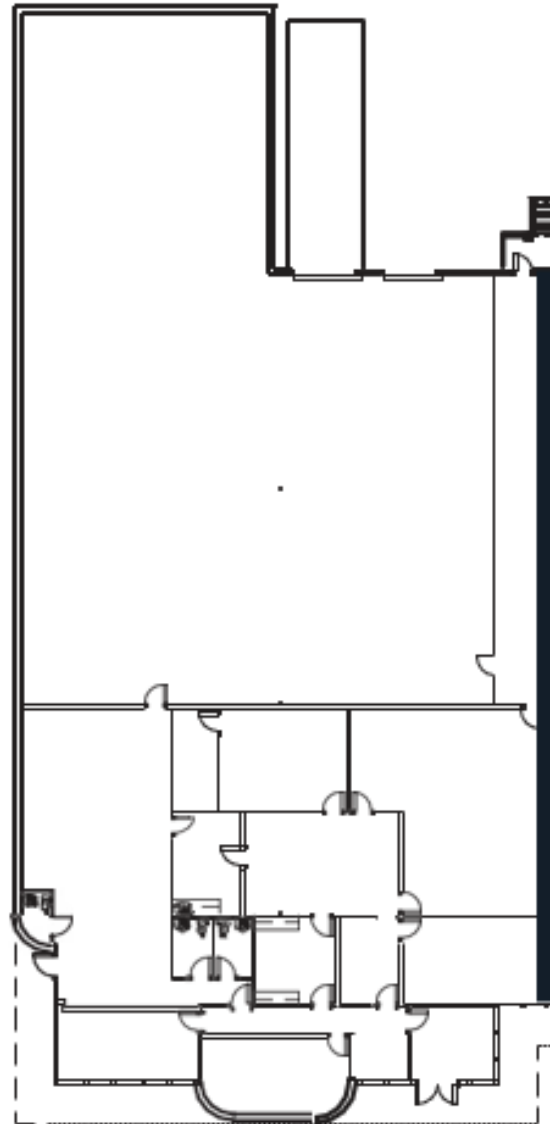


6190 REGENCY PARKWAY

Regency Center | Building 3 – Suite 300

SPACE FEATURES:

- Building Size: 58,733 SF
- Available Size: 12,029 SF
- Office: 5,199 SF
- Clear Height: 18'
- Dock High Door: 1
- Drive-In Door: 1
- Rear Load



JORDAN CAMP

404.969.9487

jordan.camp@oakleyrep.com

REID HANNER

404.281.7068

reid.hanner@oakleyrep.com

JOHN STELLING

404.259.6430

john.stelling@oakleyrep.com

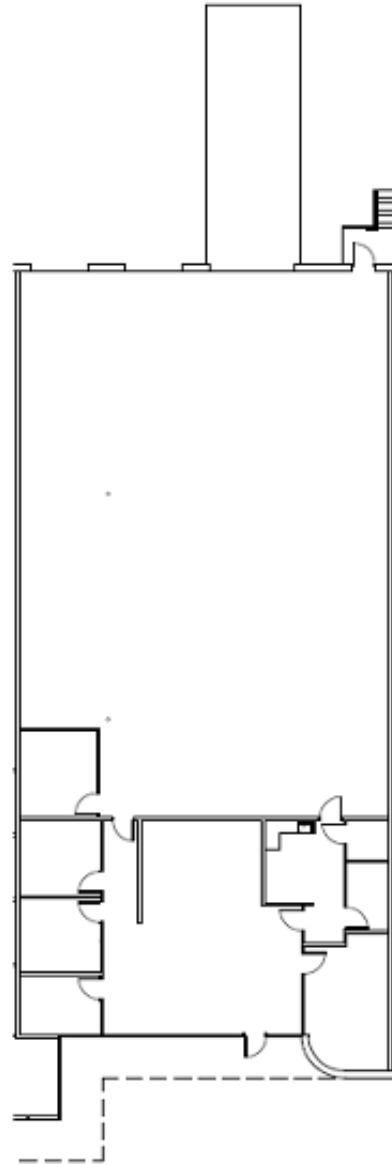
 **oakley**
REAL ESTATE PARTNERS

6190 REGENCY PARKWAY

Regency Center | Building 3 – Suite 312

SPACE FEATURES:

- Building Size: 58,733 SF
- Available Size: 6,223 SF
- Office: 2,050 SF
- Clear Height: 18'
- Dock High Doors: 2
- Drive-In Door: 1
- Rear Load



JORDAN CAMP

404.969.9487

jordan.camp@oakleyrep.com

REID HANNER

404.281.7068

reid.hanner@oakleyrep.com

JOHN STELLING

404.259.6430

john.stelling@oakleyrep.com

 **oakley**
REAL ESTATE PARTNERS

6230 REGENCY PARKWAY

Regency Center | Building 4



1984

YEAR BUILT

±18,598 SF

TOTAL BUILDING SIZE

3 DH | 1 DI

DOORS

18'

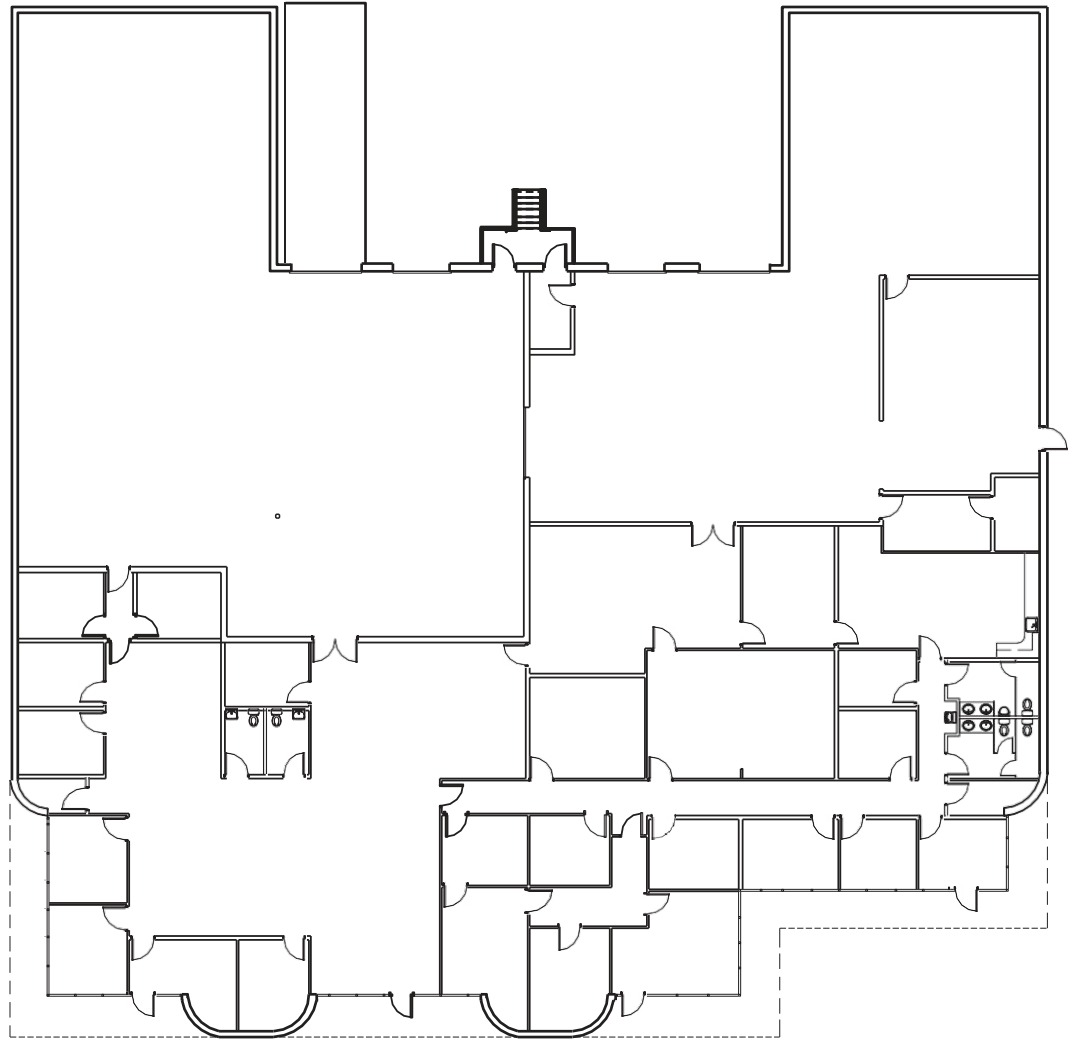
CLEAR HEIGHT

6230 REGENCY PARKWAY

Regency Center | Building 4

SPACE FEATURES:

- Building Size: 18,598 SF
- Available Size: 18,598 SF
- Office: 9,144 SF
- Clear Height: 18'
- Dock-High Doors: 3
- Drive-In Door: 1
- Rear Load
- Frontage on Jimmy Carter Blvd



JORDAN CAMP
404.969.9487
jordan.camp@oakleyrep.com

REID HANNER
404.281.7068
reid.hanner@oakleyrep.com

JOHN STELLING
404.259.6430
john.stelling@oakleyrep.com

oakley
REAL ESTATE PARTNERS

6350 REGENCY PARKWAY

Regency Center | Building 5



1984

YEAR BUILT

±27,332 SF

TOTAL BUILDING SIZE

9 DH | 1 DI

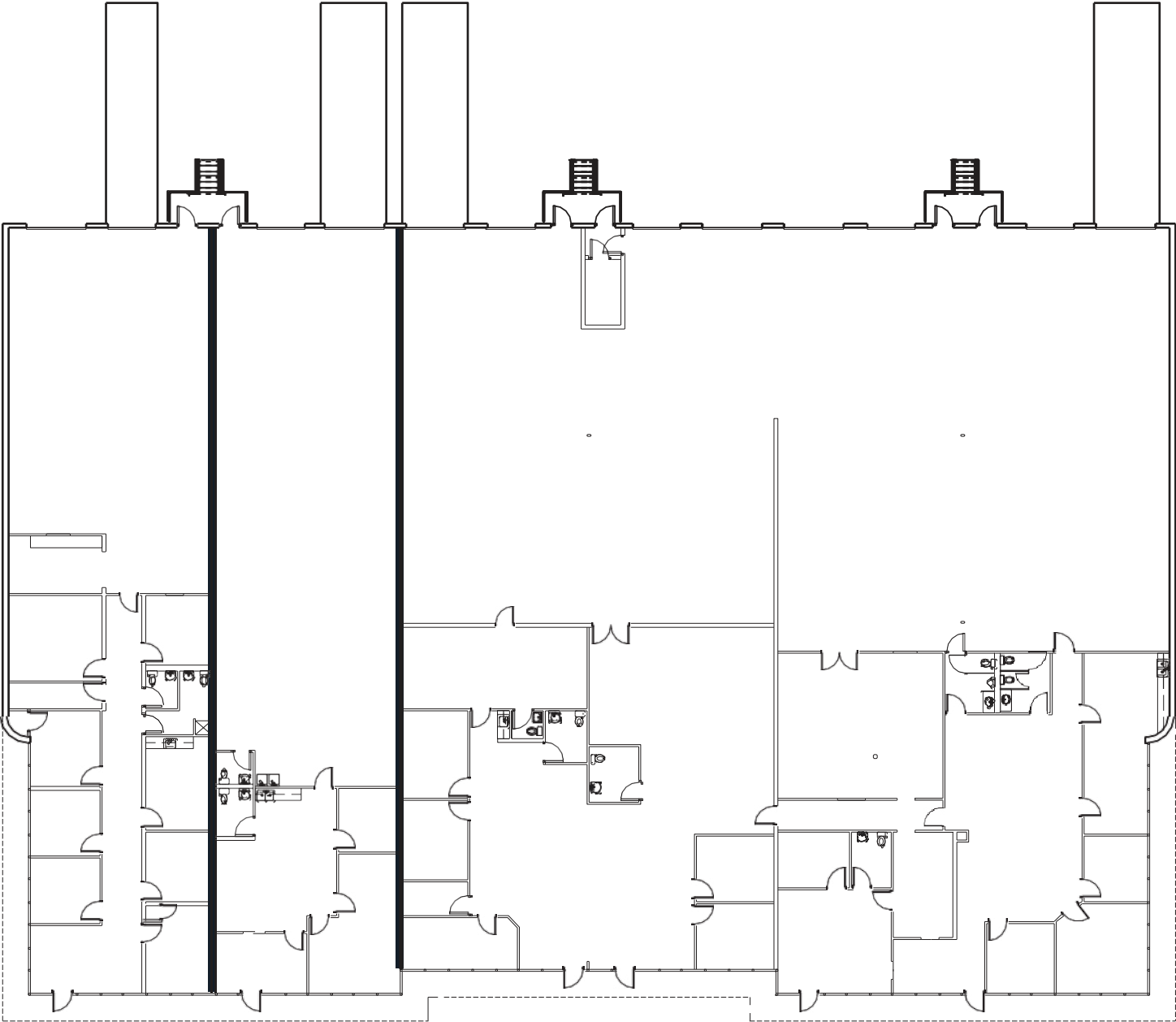
DOORS

18'

CLEAR HEIGHT

6350 REGENCY PARKWAY

Regency Center | Building 5

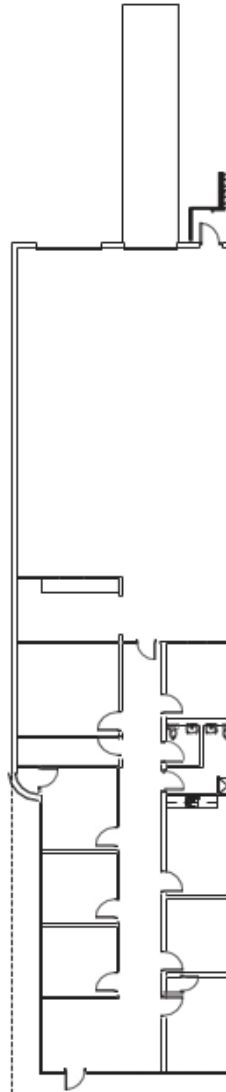


6350 REGENCY PARKWAY

Regency Center | Building 5 – Suite 500

SPACE FEATURES:

- Building Size: 27,332 SF
- Available Size: 4,992 SF
- Office: 2,625 SF
- Clear Height: 18'
- Dock High Door: 1
- Drive-In Door: 1
- Rear Load



JORDAN CAMP

404.969.9487

jordan.camp@oakleyrep.com

REID HANNER

404.281.7068

reid.hanner@oakleyrep.com

JOHN STELLING

404.259.6430

john.stelling@oakleyrep.com

 **oakley**
REAL ESTATE PARTNERS

6375 REGENCY PARKWAY

Regency Center | Building 7



1984

YEAR BUILT

±37,087 SF

TOTAL BUILDING SIZE

7 DH | 1 DI

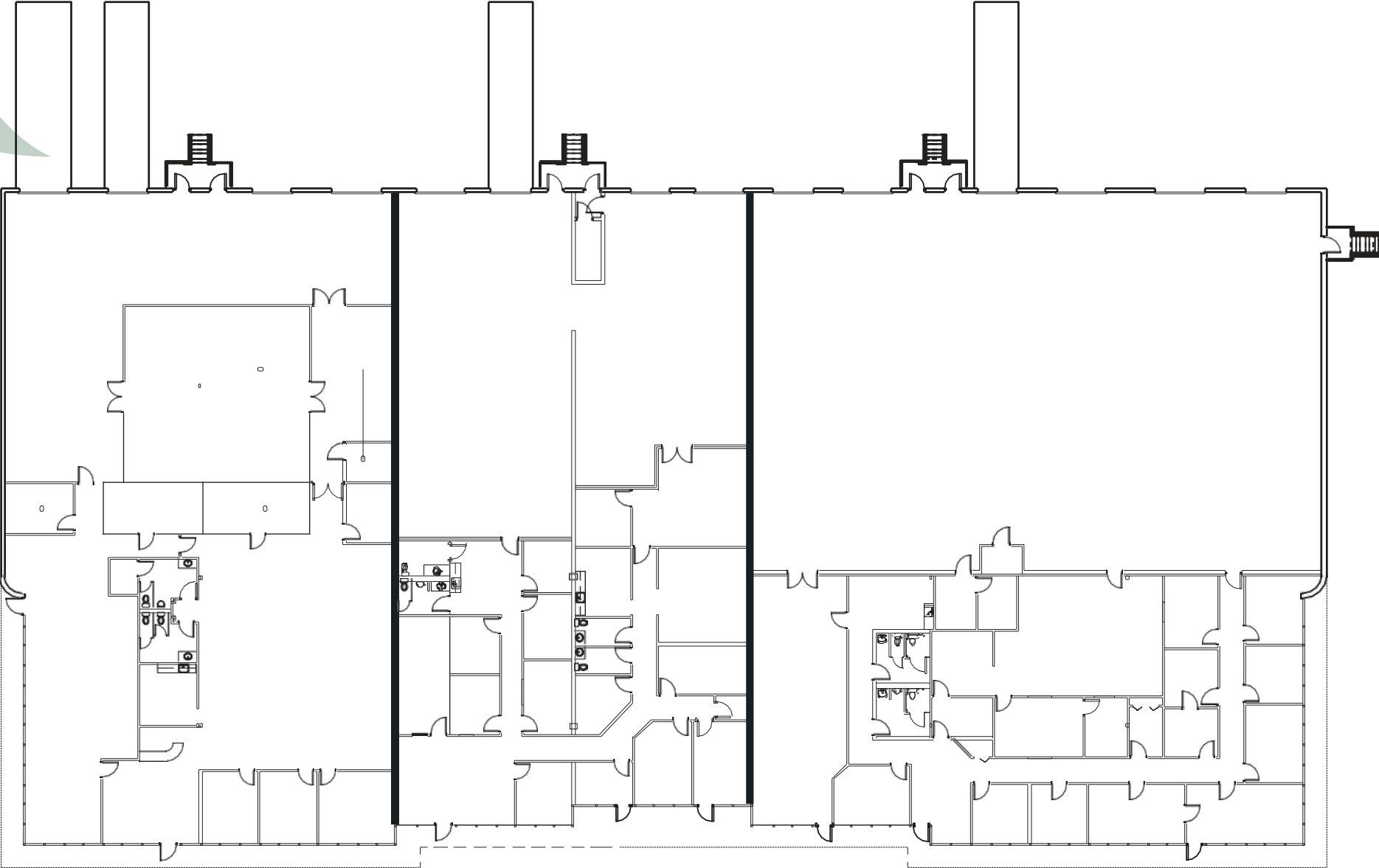
DOORS

18'

CLEAR HEIGHT

6375 REGENCY PARKWAY

Regency Center | Building 7



6325 REGENCY PARKWAY

Regency Center | Building 8



1989

YEAR BUILT

±26,381 SF

TOTAL BUILDING SIZE

12 DH | 1 DI

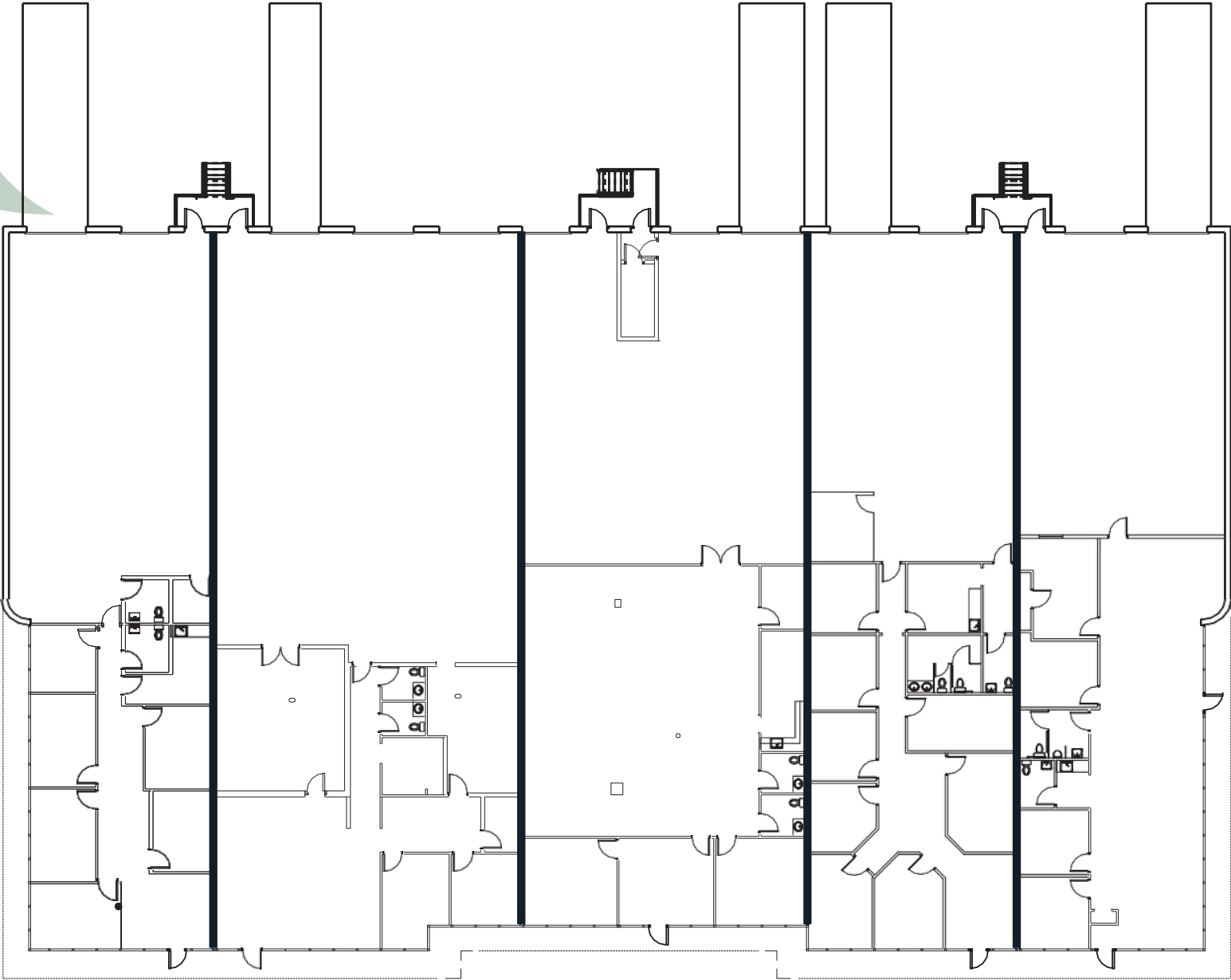
DOORS

18'

CLEAR HEIGHT

6325 REGENCY PARKWAY

Regency Center | Building 8



6215 REGENCY PARKWAY

Regency Center | Building 9



1989

YEAR BUILT

±23,821 SF

TOTAL BUILDING SIZE

2 DH

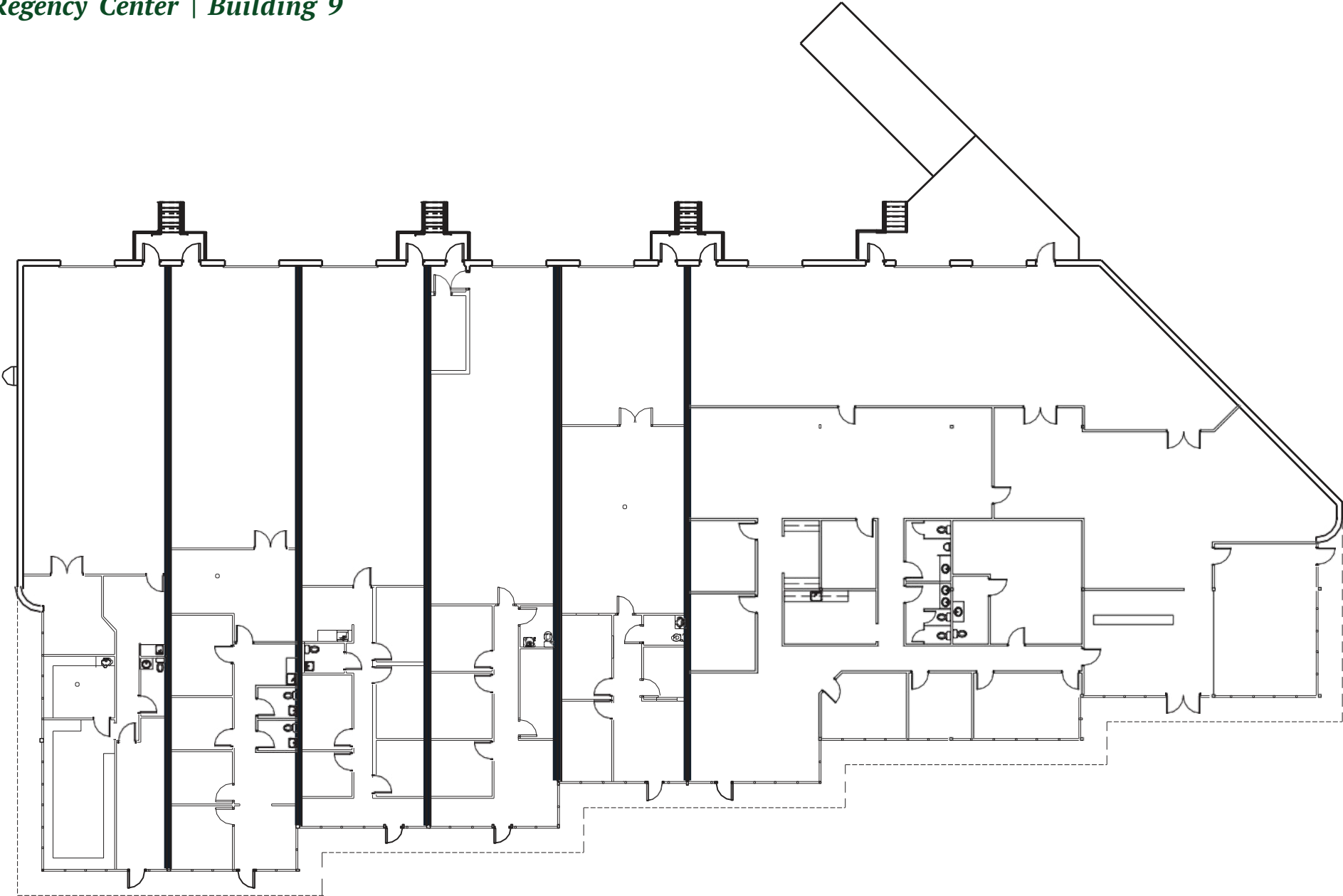
DOORS

18'

CLEAR HEIGHT

6215 REGENCY PARKWAY

Regency Center | Building 9

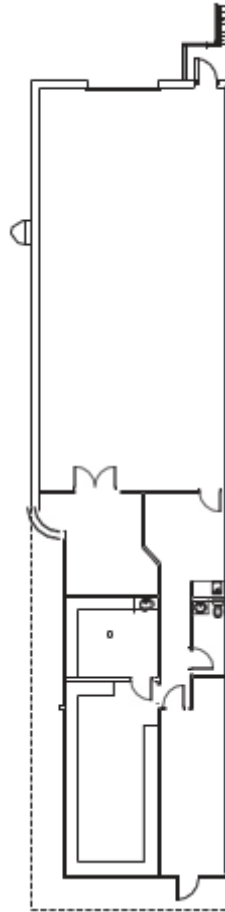


6215 REGENCY PARKWAY

Regency Center | Building 9 – Suite 900

SPACE FEATURES:

- Building Size: 23,821 SF
- Available Size: 3,285 SF
- Office: 1,696 SF
- Clear Height: 18'
- Dock High Door: 1
- Rear Load



JORDAN CAMP

404.969.9487

jordan.camp@oakleyrep.com

REID HANNER

404.281.7068

reid.hanner@oakleyrep.com

JOHN STELLING

404.259.6430

john.stelling@oakleyrep.com

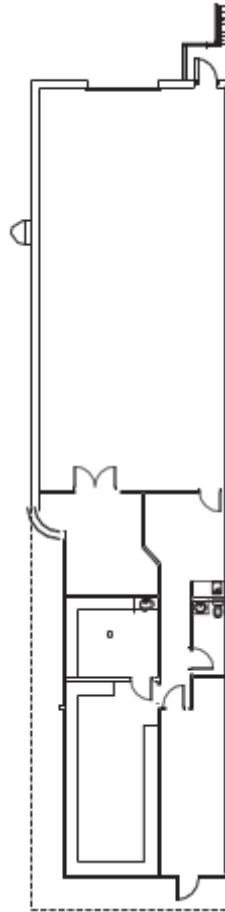
 **oakley**
REAL ESTATE PARTNERS

6215 REGENCY PARKWAY

Regency Center | Building 9 – Suite 900

SPACE FEATURES:

- Building Size: 23,821 SF
- Available Size: 3,285 SF
- Office: 1,696 SF
- Clear Height: 18'
- Dock High Door: 1
- Rear Load



JORDAN CAMP

404.969.9487

jordan.camp@oakleyrep.com

REID HANNER

404.281.7068

reid.hanner@oakleyrep.com

JOHN STELLING

404.259.6430

john.stelling@oakleyrep.com

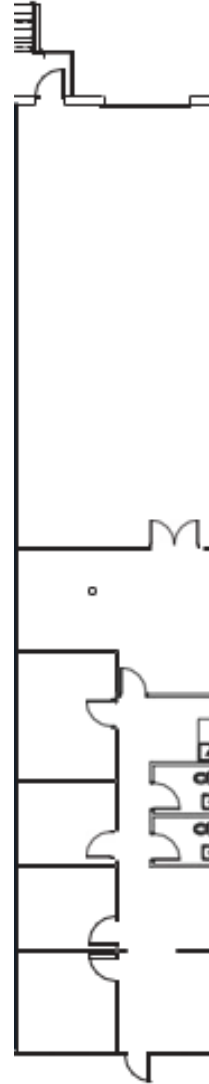
 **oakley**
REAL ESTATE PARTNERS

6215 REGENCY PARKWAY

Regency Center | Building 9 – Suite 910

SPACE FEATURES:

- Building Size: 23,821 SF
- Available Size: 2,817 SF
- Office: 1,392 SF
- Clear Height: 18'
- Dock High Door: 1
- Rear Load



JORDAN CAMP

404.969.9487

jordan.camp@oakleyrep.com

REID HANNER

404.281.7068

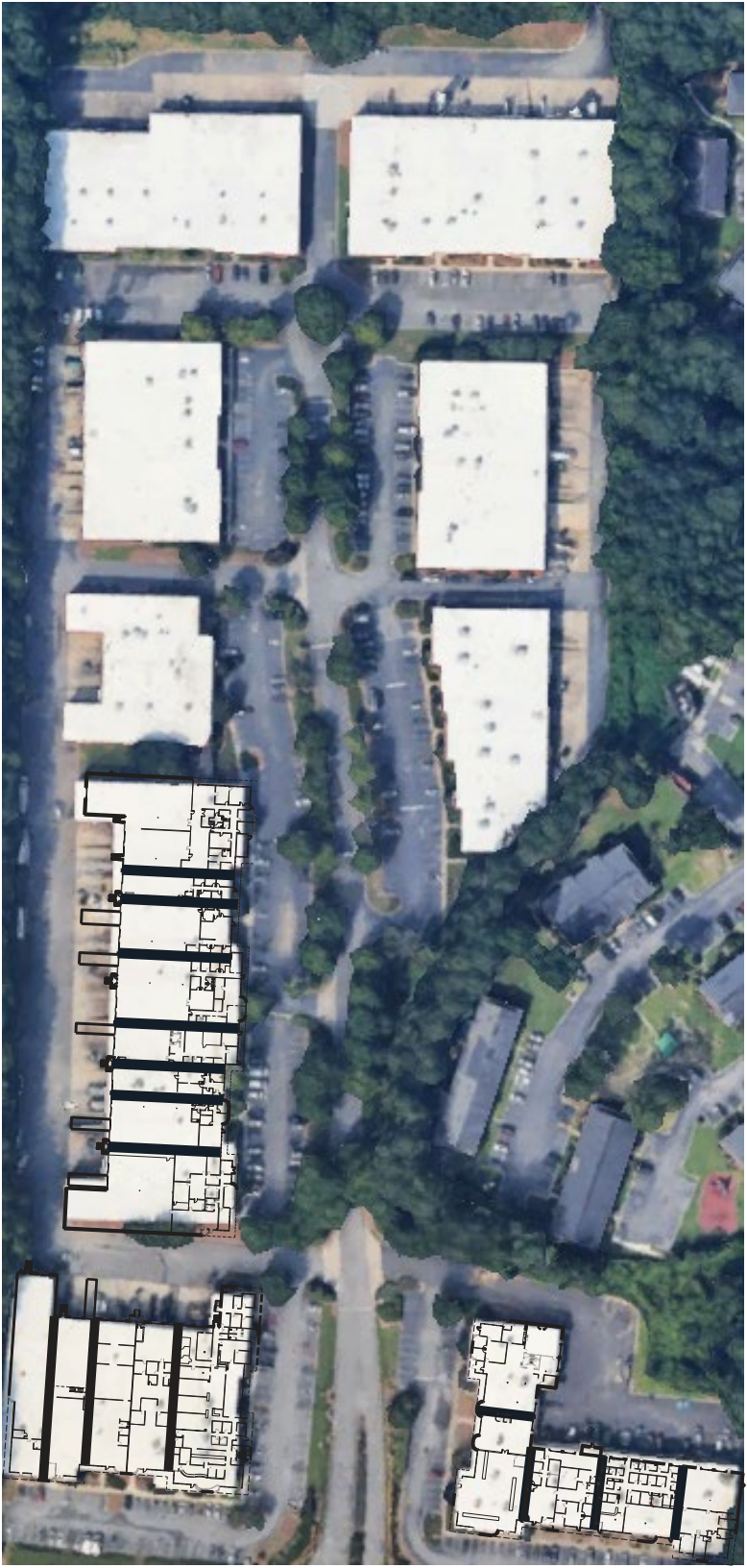
reid.hanner@oakleyrep.com

JOHN STELLING

404.259.6430

john.stelling@oakleyrep.com

 **oakley**
REAL ESTATE PARTNERS



REGENCY CENTER | FOR LEASE

8 Building Park with ±46,007 SF Available

Norcross, GA 30071

JORDAN CAMP

404.969.9487

jordan.camp@oakleyrep.com

REID HANNER

404.281.7068

reid.hanner@oakleyrep.com

JOHN STELLING

404.259.6430

john.stelling@oakleyrep.com